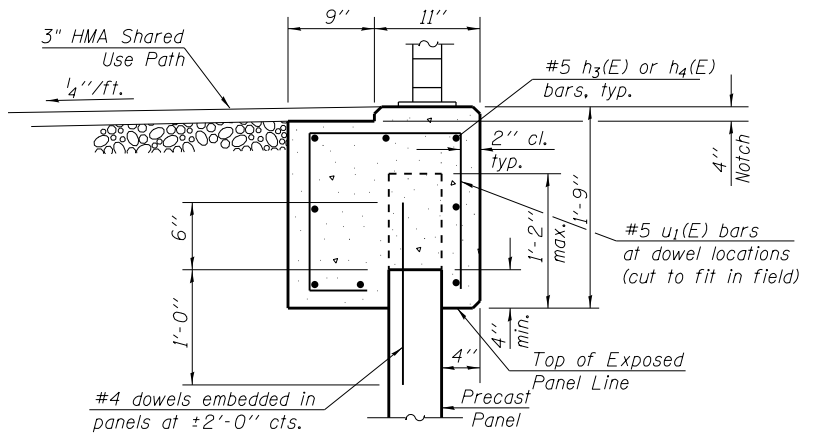
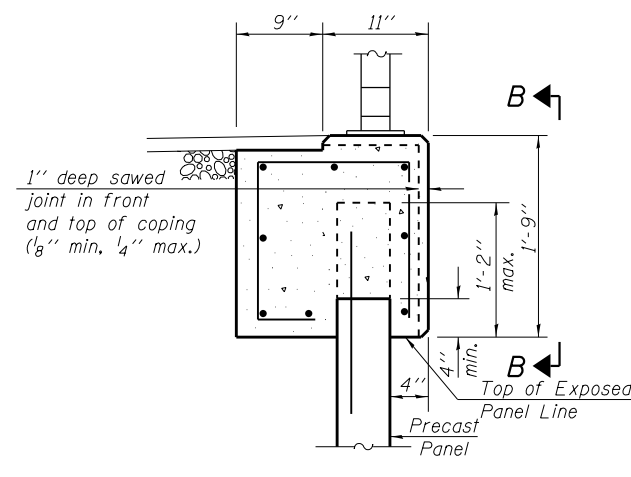


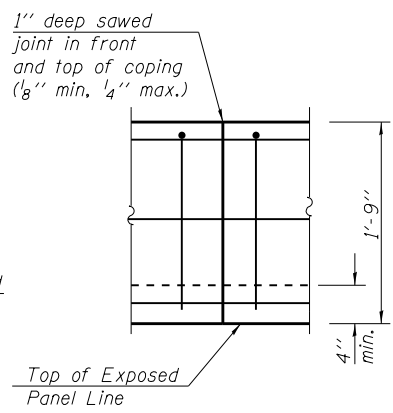
COPING ON TOP OF NORTHEAST MSE WALL
(Looking West)



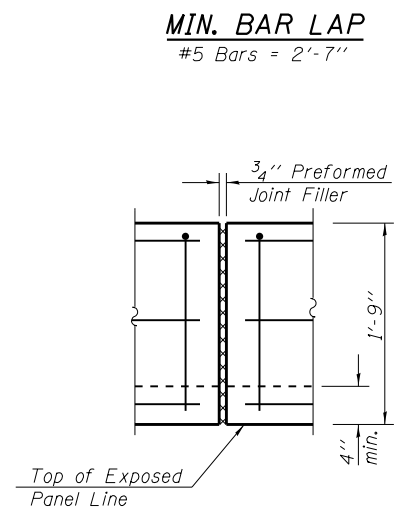
SECTION A-A



CONTRACTION JOINT AT NE COPING

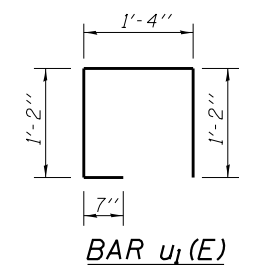


SECTION B-B



EXPANSION JOINT AT NE COPING

MIN. BAR LAP
#5 Bars = 2'-7"

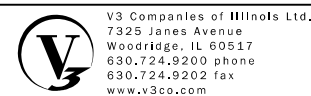


BAR u1(E)

NORTHEAST WALL COPING BILL OF MATERIAL

Bar	No.	Size	Length	Shape
h3(E)	8	#5	16'-8"	—
h4(E)	120	#5	31'-8"	—
u1(E)	467	#5	4'-3"	U
Reinforcement Bars, Epoxy Coated		Pound	6,170	
Concrete Structures		Cu. Yds.	46.1	

Notes:
Dowel bars for the northeast wall coping will be included in the cost of Mechanically Stabilized Earth Retaining Wall. Coping over the 3-sided structure's headwall is also included in the above Bill of Material.
See Sheet 17 of 35 for Railing Details and Bill of Material.



USER NAME =	DESIGNED - EVS	REVIS
PLOT SCALE =	CHECKED - WJV	REVIS
PLOT DATE =	DRAWN - EVS	REVIS
	CHECKED - WJV	REVIS

STATE OF ILLINOIS
DEPARTMENT OF TRANSPORTATION

NORTHEAST MSE WALL COPING ELEVATION
STRUCTURE NO. 016-1279

SHEET NO. 11 OF 35 SHEETS

F.A.P. RTE.	SECTION	COUNTY	TOTAL SHEETS	SHEET NO.
353	11-Y-A	COOK	354	231
CONTRACT NO. 60R19				

ILLINOIS FED. AID PROJECT