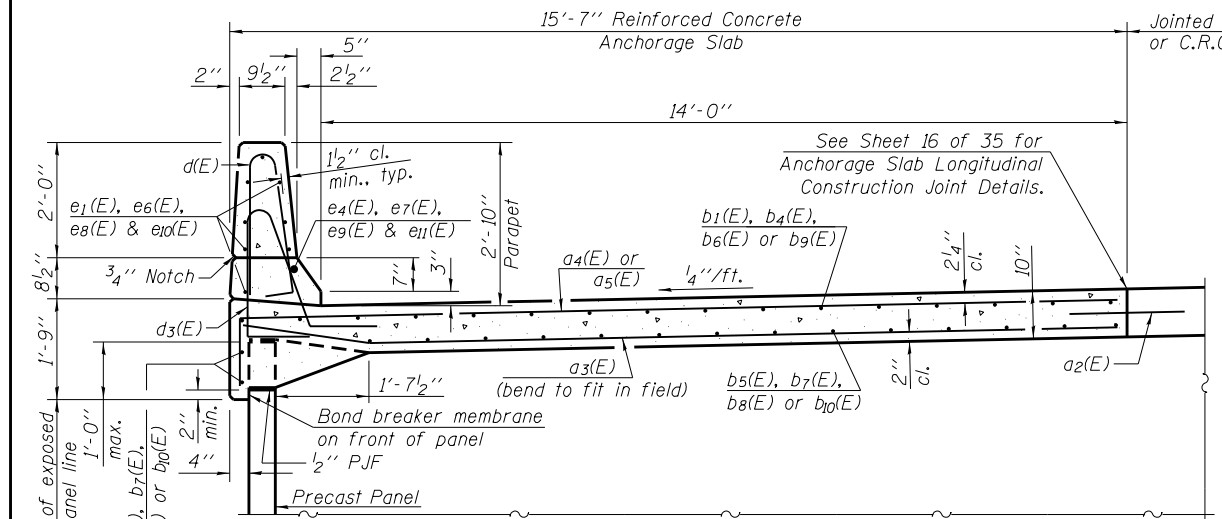


**NORTHWEST PARAPET ELEVATION**  
(Looking West)

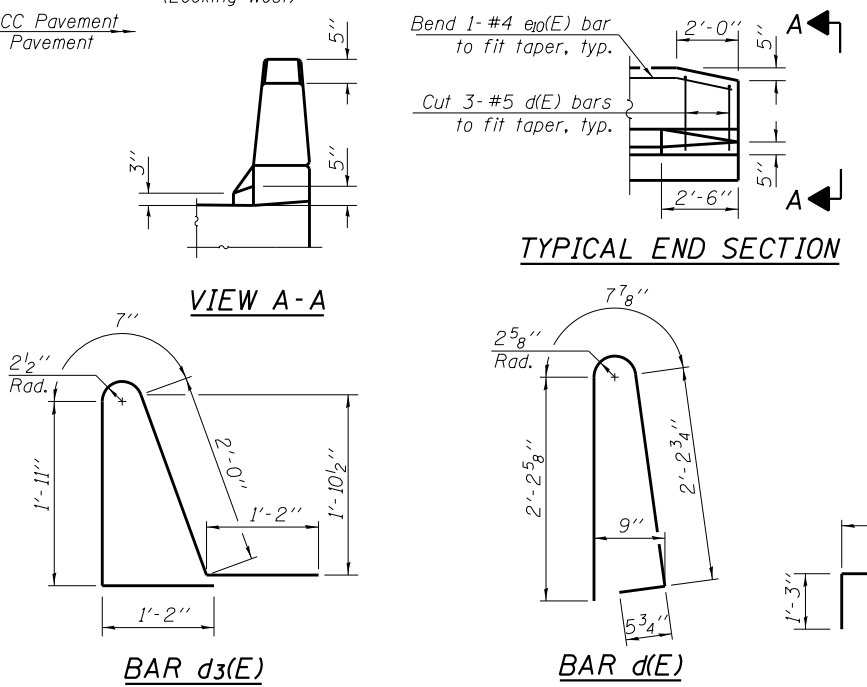
**NORTHWEST ANCHORAGE SLAB AND PARAPET BILL OF MATERIAL**

Bar	No.	Size	Length	Shape	Bar	No.	Size	Length	Shape
a2(E)	329	#6	2'-6"		d3(E)	712	#5	6'-10"	D
a3(E)	657	#4	15'-3"		e1(E)	176	#4	14'-8"	
a4(E)	657	#6	16'-6"		e4(E)	22	#8	14'-8"	
a5(E)	657	#6	15'-3"		e6(E)	32	#4	23'-10"	
a9(E)	16	#5	4'-0"		e7(E)	4	#8	23'-10"	
					e8(E)	104	#4	14'-5"	
b1(E)	336	#5	14'-8"		e9(E)	13	#8	14'-5"	
b4(E)	48	#5	11'-4"		e10(E)	24	#4	11'-3"	
b5(E)	48	#4	11'-4"		e11(E)	3	#8	11'-3"	
b6(E)	224	#5	14'-6"						
b7(E)	224	#4	14'-6"						
b8(E)	336	#4	14'-8"						
b9(E)	48	#5	34'-5"						
b10(E)	64	#4	26'-1"						
d(E)	712	#5	5'-7"						

\*Weight not included in Reinf. Bars, Epoxy Coated. Cost included with PCC Pav't, 10" (Jointed) and Bridge CRC Pav't. See Roadway drawings.



**SECTION THRU NORTHWEST PARAPET AND ANCHORAGE SLAB**



USER NAME =	DESIGNED - EVS	REVISOR
PLOT SCALE =	CHECKED - WJV	REVISOR
PLOT DATE =	DRAWN - EVS	REVISOR
	CHECKED - WJV	REVISOR

STATE OF ILLINOIS  
DEPARTMENT OF TRANSPORTATION

**NORTHWEST PARAPET ELEVATION**  
**STRUCTURE NO. 016-1279**  
SHEET NO. 15 OF 35 SHEETS

F.A.P. RTE.	SECTION	COUNTY	TOTAL SHEETS	SHEET NO.
353	11-Y-A	COOK	354	235
CONTRACT NO. 60R19				
ILLINOIS FED. AID PROJECT				