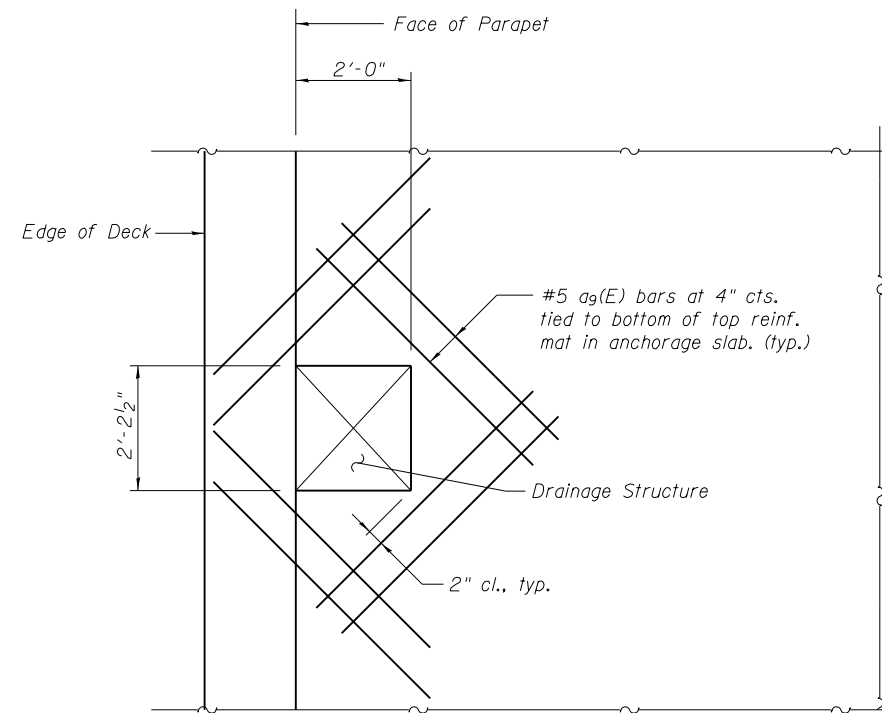


SECTION THRU DRAINAGE STRUCTURES IN SOUTHWEST ANCHORAGE SLABS

(2 Total)

*M.S.E. Wall supplier to provide internal stability design for load transfer system to accommodate drainage structures and pipes.



SECTION A-A

Shift transverse reinforcement and cut longitudinal reinforcement in anchorage slab to clear drainage structures.

USER NAME =	DESIGNED - EVS	REVISED
	CHECKED - WJV	REVISED
PLOT SCALE =	DRAWN - EVS	REVISED
PLOT DATE =	CHECKED - WJV	REVISED

F.A.P. RTE.	SECTION	COUNTY	TOTAL SHEETS	SHEET NO.
353	11-Y-A	COOK	354	265
CONTRACT NO. 60R19				
ILLINOIS FED. AID PROJECT				