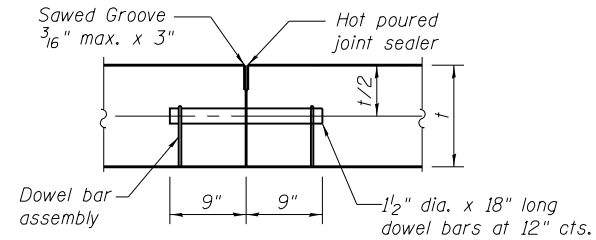
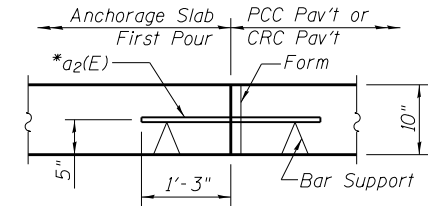


SOUTHWEST ANCHORAGE SLABS



SECTION A-A

(Cost of Dowel bar, dowel bar assembly, saw cut and hot poured joint sealer included with Concrete Structures)



SOUTHWEST ANCHORAGE SLABS

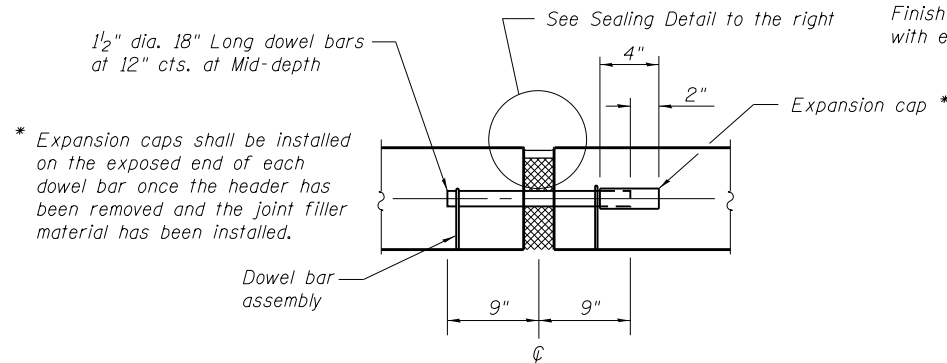
*Cost included with PCC Pav't., 10" Jointed and Bridge C.R.C. Pav't. See Roadway Plans.

ANCHORAGE SLAB LONGITUDINAL CONSTRUCTION JOINT DETAILS

(Joint to be sawed and sealed in accordance with the Longitudinal Construction Joint Details on Std. 420001)

TRANSVERSE CONTRACTION JOINT DETAILS

(See Art. 420.10(d) of Standard Specifications.)

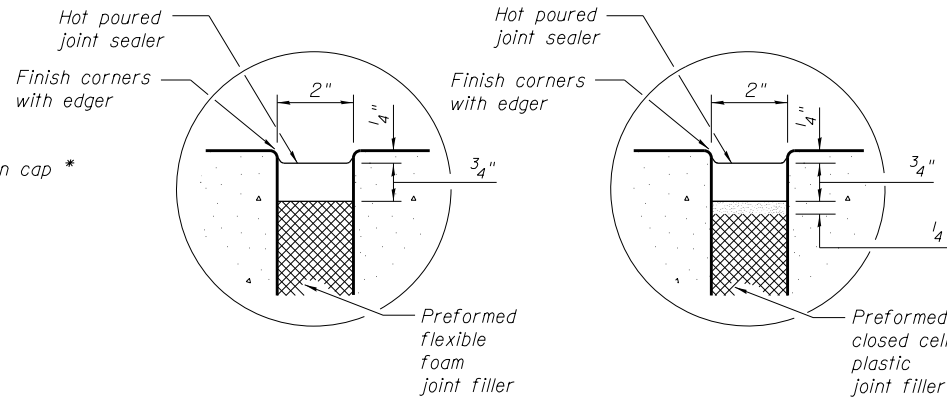


* Expansion caps shall be installed on the exposed end of each dowel bar once the header has been removed and the joint filler material has been installed.

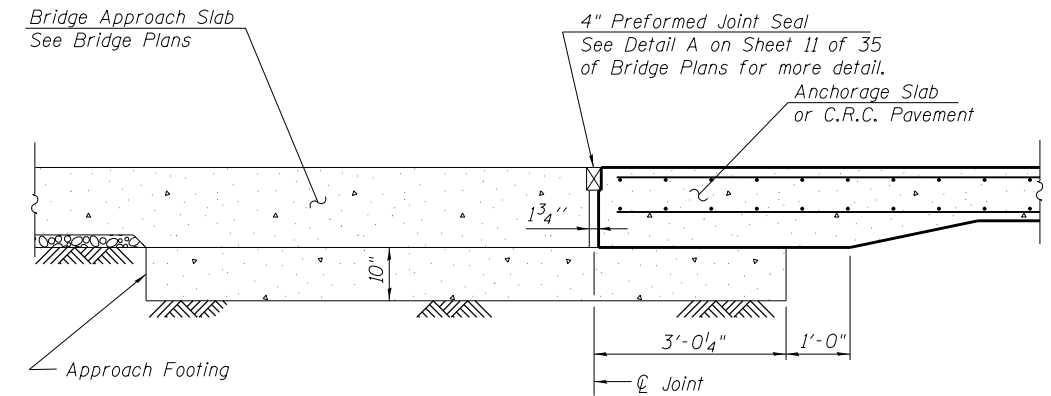
ANCHORAGE SLAB

TRANSVERSE EXPANSION JOINT

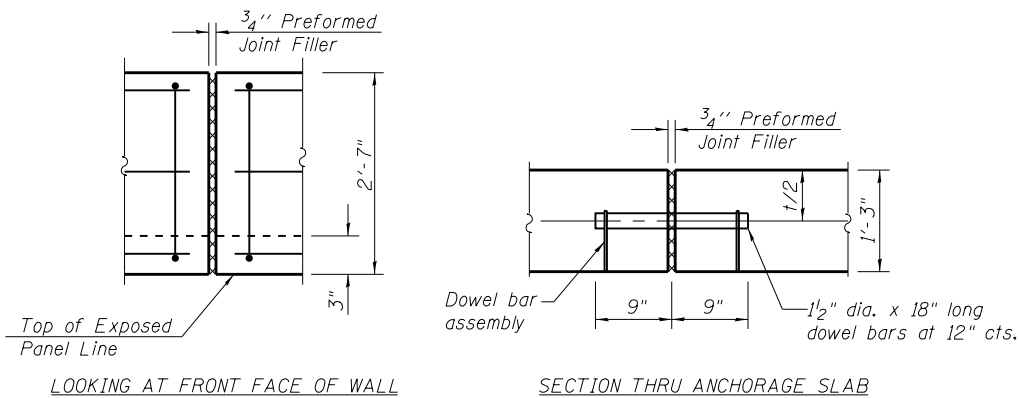
Located at C.R.C Pav't and Jointed PCC Pav't Joint
(Cost of Dowel bar, dowel bar assembly, expansion cap and hot poured joint sealer included with Concrete Structures)



SEALING DETAIL

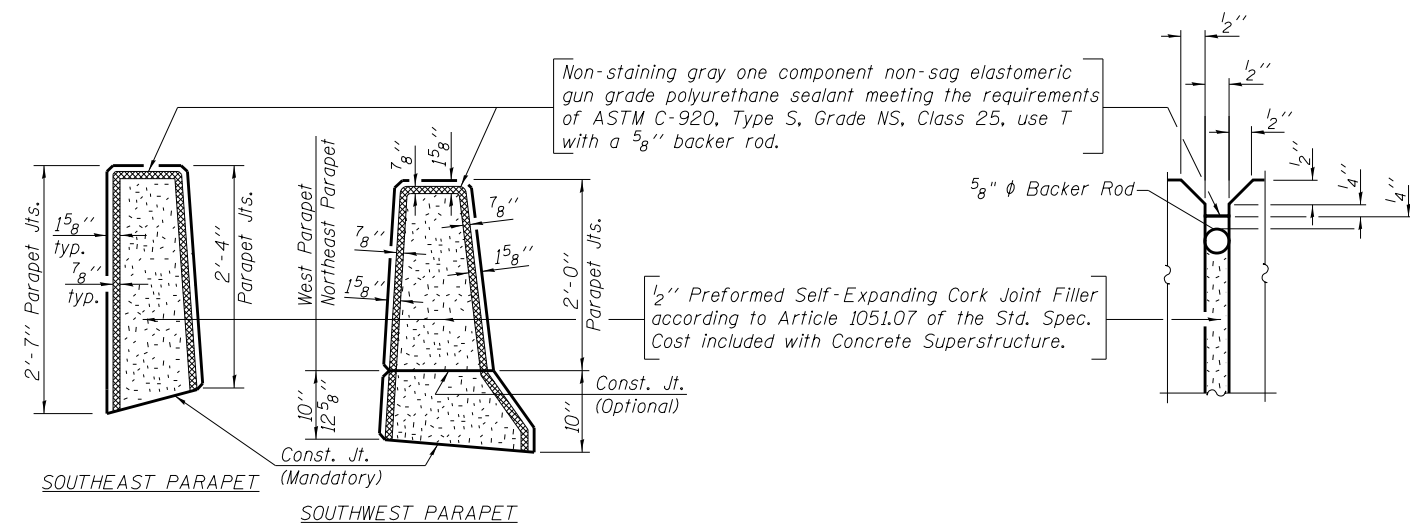


TRANSVERSE EXPANSION JOINT BETWEEN THE APPROACH SLAB AND ANCHORAGE SLAB OR C.R.C. PAVEMENT

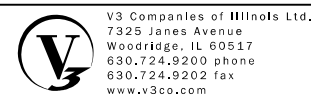


EXPANSION JOINT AT SE ANCHORAGE SLAB

(Cost of Dowel bar, dowel bar assembly, preformed joint filler included with Concrete Structures)



PARAPET JOINT DETAILS



USER NAME =	DESIGNED - EVS	REVISED
PLOT SCALE =	CHECKED - WJV	REVISED
PLOT DATE =	DRAWN - EVS	REVISED
	CHECKED - WJV	REVISED

STATE OF ILLINOIS
DEPARTMENT OF TRANSPORTATION

ANCHORAGE SLAB AND PARAPET DETAILS
STRUCTURE NO. 016-1280

SHEET NO. 15 OF 25 SHEETS

F.A.P. R.T.E.	SECTION	COUNTY	TOTAL SHEETS	SHEET NO.
353	11-Y-A	COOK	354	270
CONTRACT NO. 60R19				

ILLINOIS FED. AID PROJECT