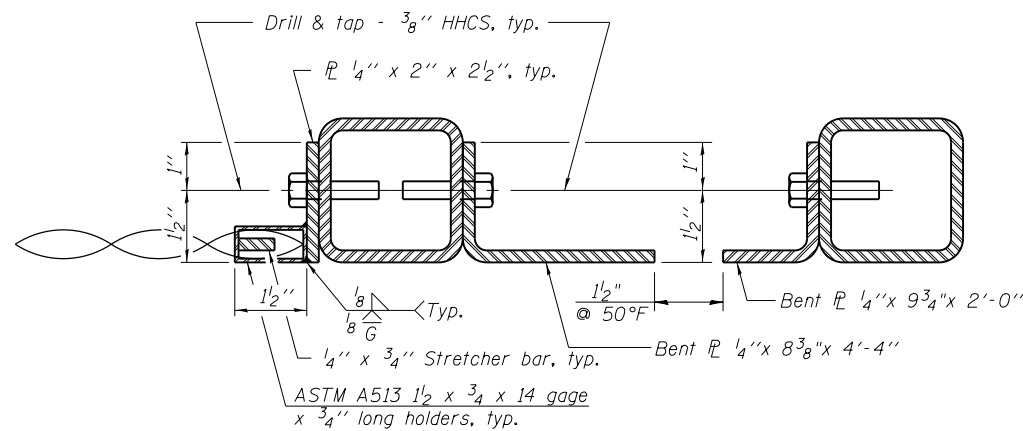
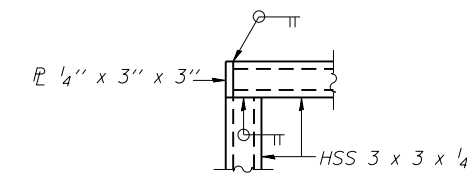


PARAPET RAILING
ELEVATION
(Inside Face of Three Element Rail)

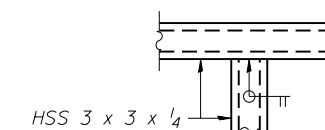


SECTION A-A

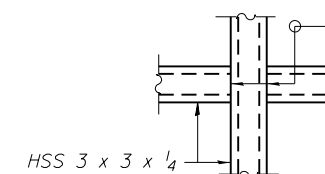
Notes:
All steel rail elements shall be galvanized according to Article 509.05 of the Standard Specifications.



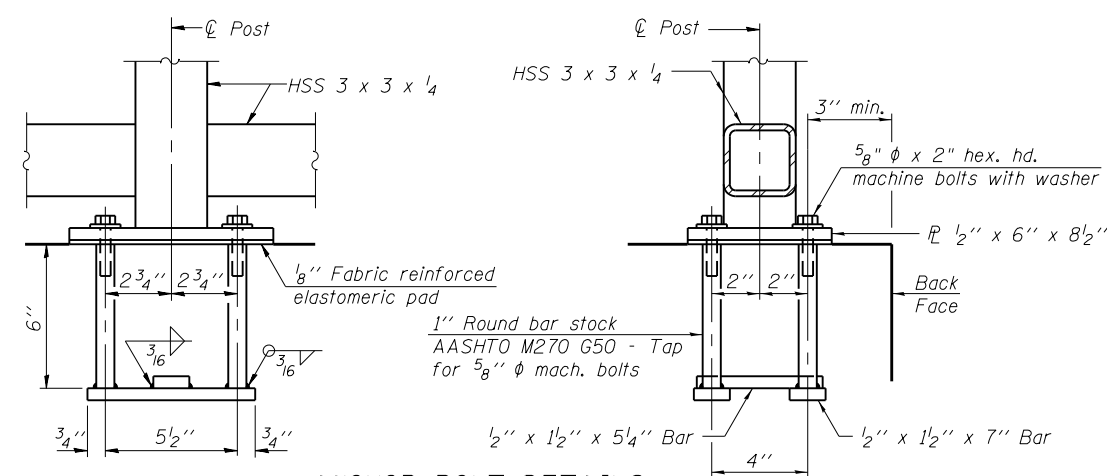
DETAIL A



DETAIL B

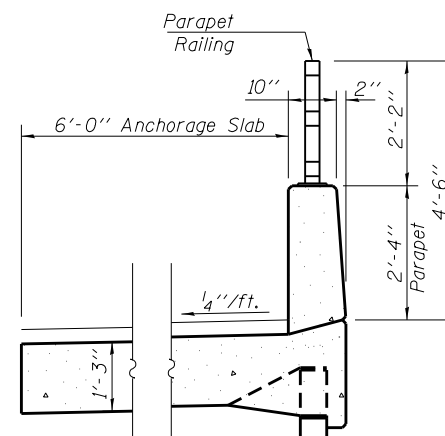


DETAIL C

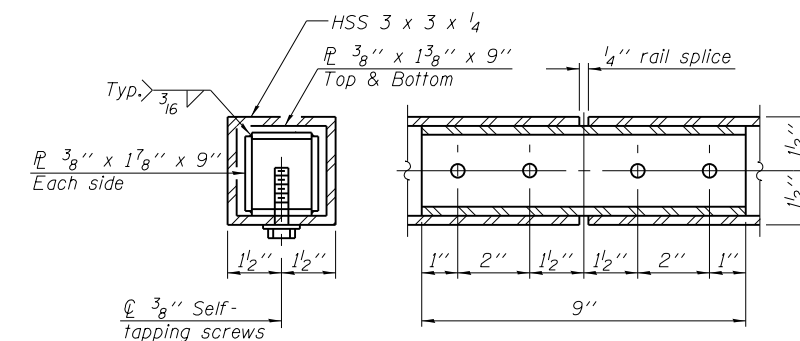


ANCHOR BOLT DETAILS

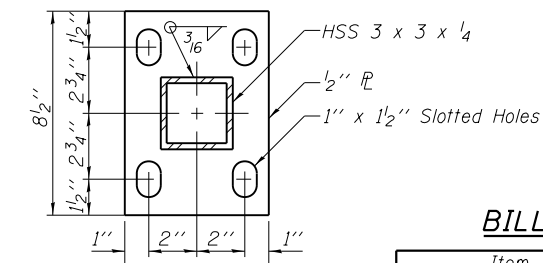
In lieu of the cast-in-place anchor device shown, the Contractor has the option of drilling and setting 5/8" phi anchor rods according to Article 509.06 of the Standard Specifications. Embedment shall be according to the manufacturer's specifications.



SECTION THRU PATH SOUTH OF THE BRIDGE



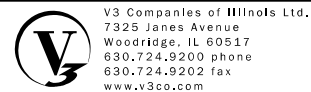
RAIL SPLICE



BASE PL

BILL OF MATERIAL

Item	Unit	Quantity
Parapet Railing	Foot	499



USER NAME =	DESIGNED - EVS	REVISOR
PLOT SCALE =	CHECKED - WJV	REVISION
PLOT DATE =	DRAWN - EVS	REVISION
	CHECKED - WJV	REVISION

STATE OF ILLINOIS
DEPARTMENT OF TRANSPORTATION

BICYCLE RAILING
STRUCTURE NO. 016-1280

SHEET NO. 16 OF 25 SHEETS

F.A.P. RTE.	SECTION	COUNTY	TOTAL SHEETS	SHEET NO.
353	11-Y-A	COOK	354	271
CONTRACT NO. 60R19				

ILLINOIS FED. AID PROJECT