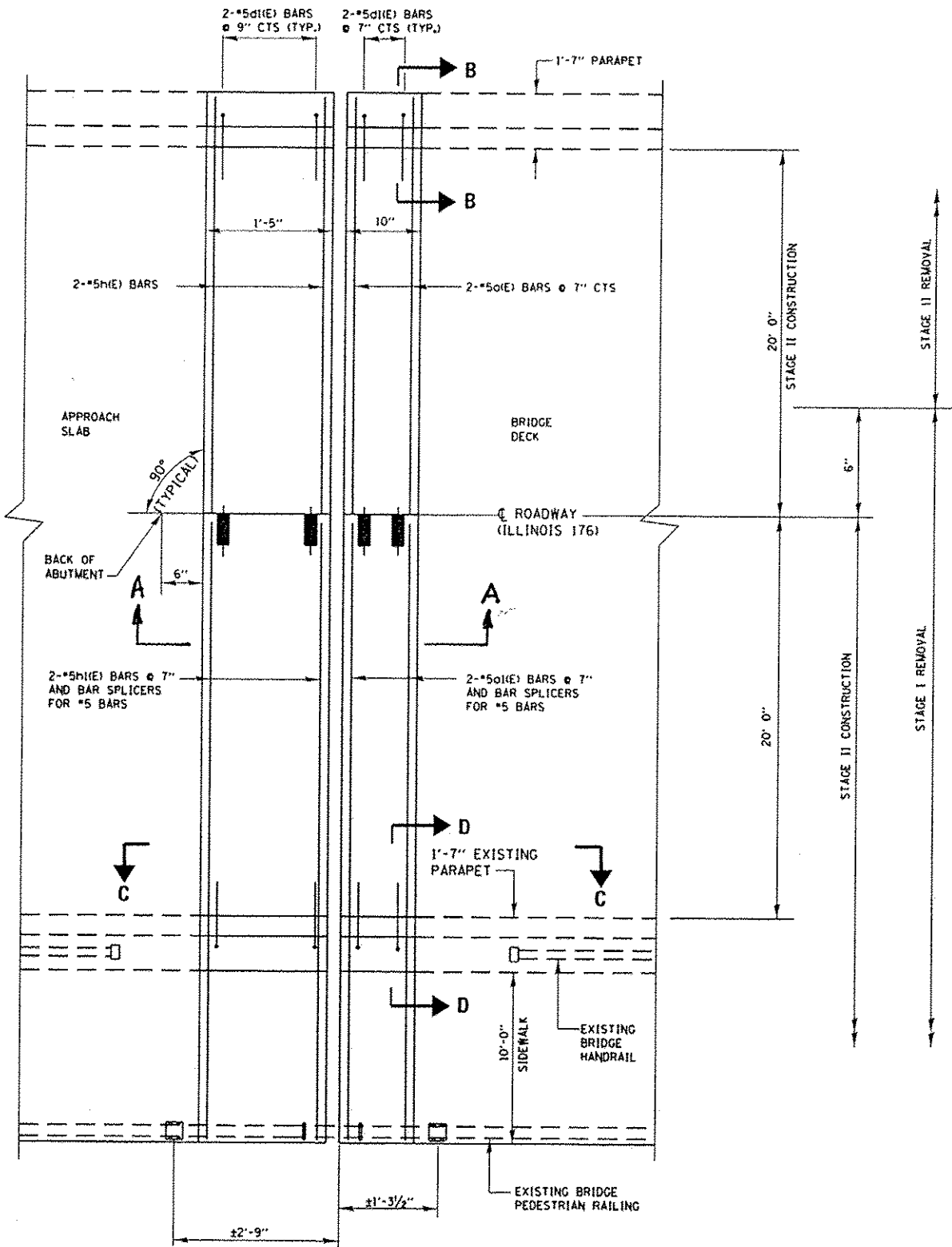
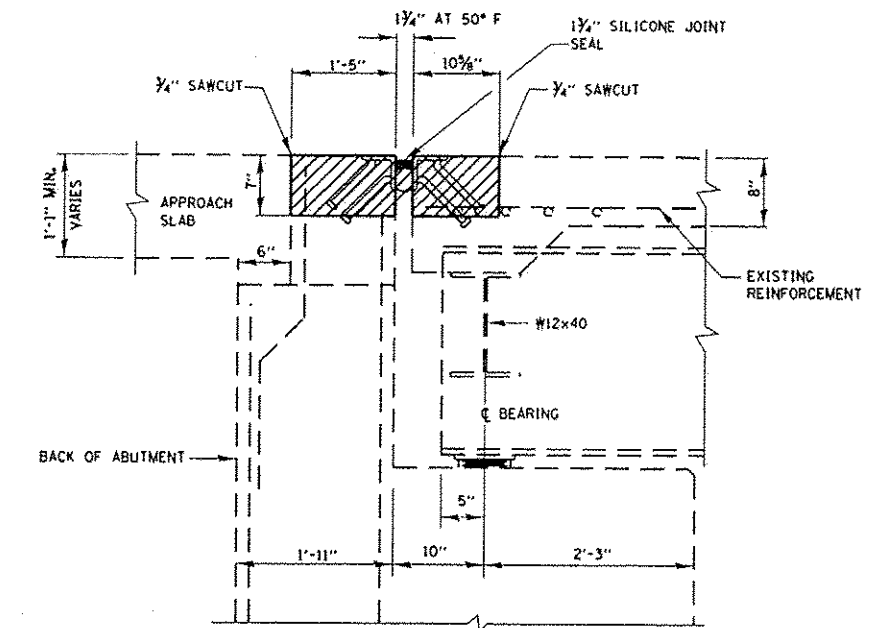


BILL OF MATERIALS

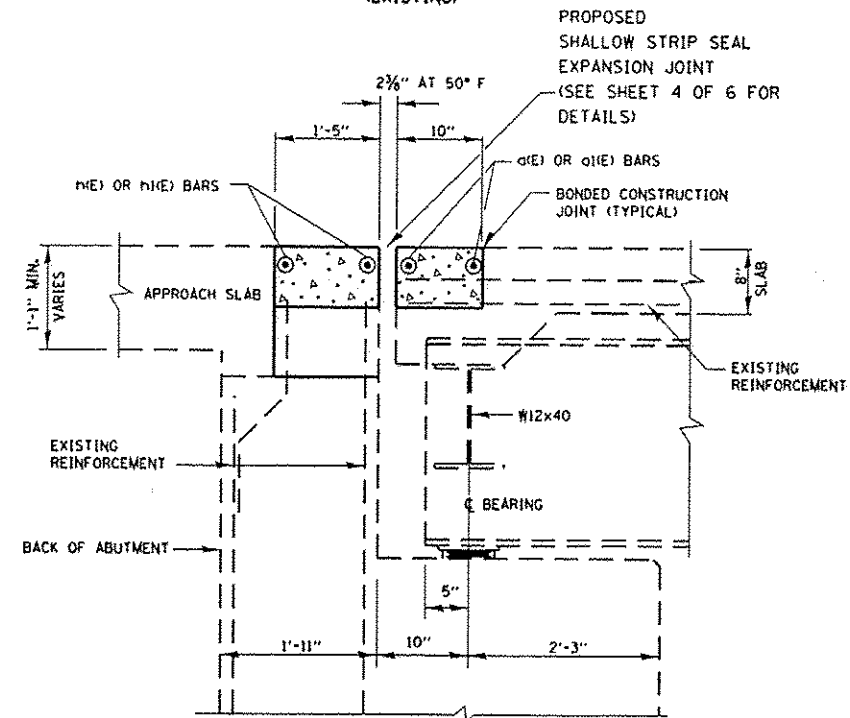
BAR	NO.	SIZE	LENGTH	SHAPE	
ø1E)	4	*5	21'-3"	—	
ø1E)	4	*5	32'-5"	—	
ø1E)	16	*5	3'-11"	L	
n1E)	4	*5	21'-3"	—	
n1E)	4	*5	32'-5"	—	
REINFORCEMENT BARS EPOXY COATED)				POUND	510
CONCRETE REMOVAL				CU. YD.	6.2
CONCRETE SUPERSTRUCTURE				CU. YD.	6.2
PREFORMED JOINT STRIP SEAL				FOOT	109
BAR SPLICERS				EACH	8



**PLAN
WEST ABUTMENT SHOWN**



**SECTION A-A
(EXISTING)**



**SECTION A-A
(PROPOSED)**

LEGEND:

HATCHED AREA INDICATES CONCRETE REMOVAL

FILE NAME *	USER NAME * pyrzanowski	DESIGNED - MYT	REVISED -
c:\pwork\p1dot\pyrzanowski\bu030844	10143112-shl-plen.dgn	DRAWN - MYT	REVISED -
Default	PLOT SCALE * 100.0000' / in.	CHECKED - RTB	REVISED -
	PLOT DATE * 2/11/2014	DATE - 2-10-14	REVISED -

**STATE OF ILLINOIS
DEPARTMENT OF TRANSPORTATION**

**ILL 176 (PARK AVENUE) AT DES PLAINES RIVER
TRANSVERSE EXPANSION JOINT DETAILS
S.N. 049-0068**

SCALE: SHEET 2 OF 6 SHEETS STA. TO STA.

F.A.D. RTE.	SECTION	COUNTY	TOTAL SHEETS	SHEET NO.
1238	P-2-1-1 (12)	LAKE	25	5
CONTRACT NO. 60777				ILLINOIS FED. AID PROJECT