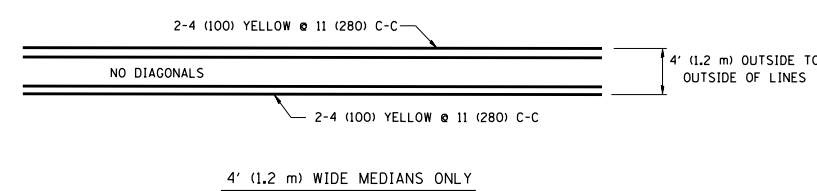
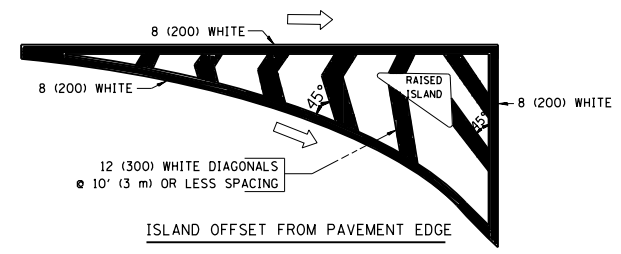


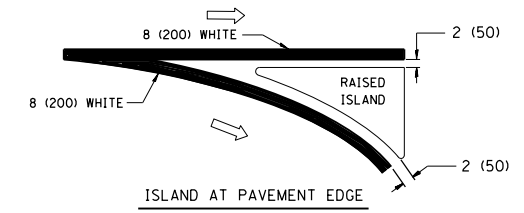
2-LANE ROADWAY



4' (1.2 m) WIDE MEDIANS ONLY

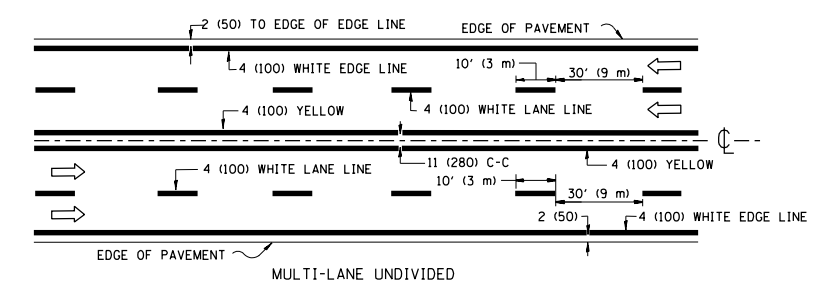


ISLAND OFFSET FROM PAVEMENT EDGE

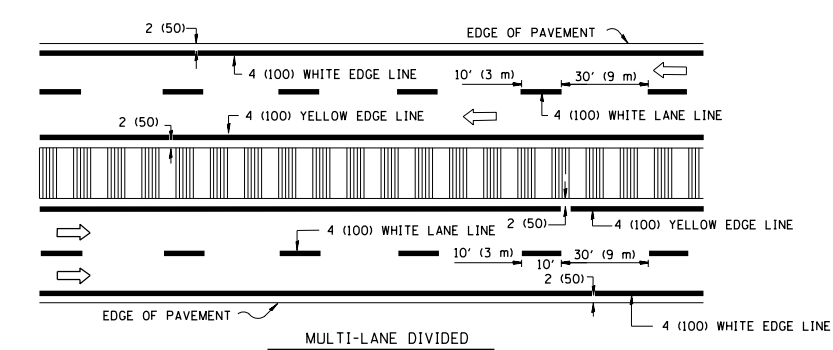


ISLAND AT PAVEMENT EDGE

TYPICAL ISLAND MARKING



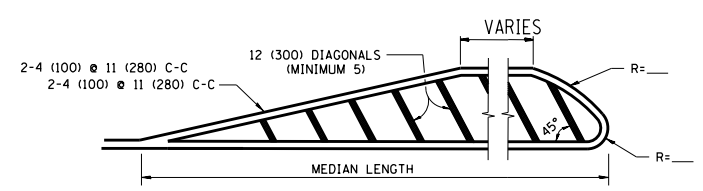
MULTI-LANE UNDIVIDED



MULTI-LANE DIVIDED WITH MOUNTABLE MEDIAN

NOTE: MEDIANS WITH BARRIER CURB DO NOT REQUIRE AN EDGE LINE

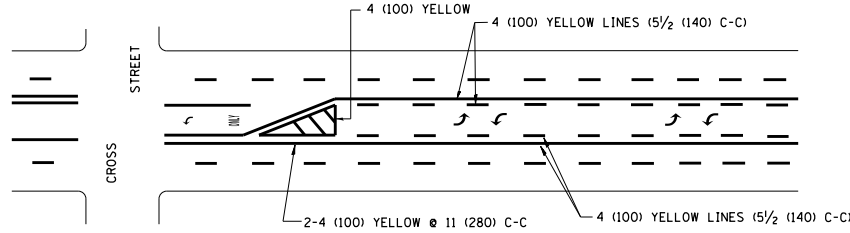
TYPICAL LANE AND EDGE LINE MARKING



FOR MEDIAN LENGTHS WHERE DIAGONAL SPACING CANNOT BE ATTAINED, USE 5 (FIVE) EQUALLY SPACED DIAGONAL LINES.

DIAGONAL LINE SPACING: 50' (15 m) C-C (LESS THAN 30MPH (50 km/h))  
75' (25 m) C-C 30MPH (50 km/h) TO 45MPH (70 km/h)  
150' (45 m) C-C (MORE THAN 45MPH (70 km/h))

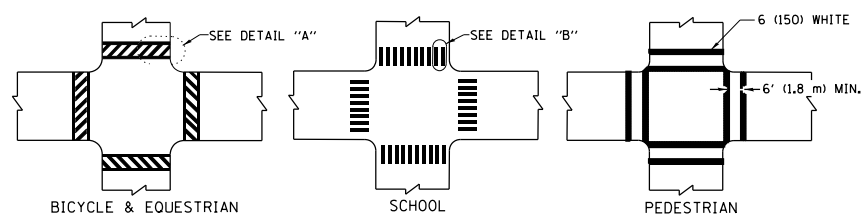
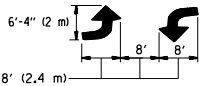
MEDIANS OVER 4' (1.2 m) WIDE



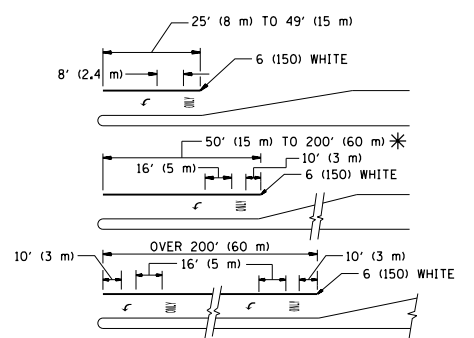
MEDIAN WITH TWO-WAY LEFT TURN LANE

TYPICAL PAINTED MEDIAN MARKING

A MINIMUM OF TWO PAIRS OF TURN ARROWS SHALL BE USED, WHITE IN COLOR. ADDITIONAL PAIRS SHALL BE PLACED AT 200' (60 m) TO 300' (90 m) INTERVALS.



TYPICAL CROSSWALK MARKING



TYPICAL LEFT (OR RIGHT) TURN LANE

TYPICAL TURN LANE MARKING

FULL SIZE LETTERS 8' (2.4 m) AND ARROWS SHALL BE USED.  
AREA = 15.6 SQ. FT. (1.5 m<sup>2</sup>) ONLY AREA = 20.8 SQ. FT. (1.9 m<sup>2</sup>)  
\* TURN LANES IN EXCESS OF 400' (120 m) IN LENGTH MAY HAVE AN ADDITIONAL SET OF ARROW - "ONLY" INSTALLED MIDWAY BETWEEN THE OTHER TWO SETS OF ARROW - "ONLY".

| TYPE OF MARKING   | WIDTH OF LINE  | PATTERN                      | COLOR   | SPACING / REMARKS  |
|---|--|------------------------------|---|--|
| CENTERLINE ON 2 LANE PAVEMENT   | 4 (100)  | SKIP-DASH                    | YELLOW  | 10' (3 m) LINE WITH 30' (9 m) SPACE  |
| CENTERLINE ON MULTI-LANE UNDIVIDED PAVEMENT   | 2 @ 4 (100)  | SOLID                        | YELLOW  | 11 (280) C-C   |
| NO PASSING ZONE LINES FOR ONE DIRECTION   | 4 (100)  | SOLID                        | YELLOW  | 5 1/2 (140) C-C FROM SKIP-DASH CENTERLINE  |
| NO PASSING ZONE LINES FOR BOTH DIRECTIONS   | 2 @ 4 (100)  | SOLID                        | YELLOW  | 11 (280) C-C OMIT SKIP-DASH CENTERLINE BETWEEN   |
| LANE LINES  | 4 (100)<br>5 (125) ON FREEWAYS   | SKIP-DASH<br>SKIP-DASH       | WHITE<br>WHITE                                    | 10' (3 m) LINE WITH 30' (9 m) SPACE  |
| DOTTED LINES (EXTENSIONS OF CENTER, LANE OR TURN LANE MARKINGS)                                   | SAME AS LINE BEING EXTENDED  | SKIP-DASH                    | SAME AS LINE BEING EXTENDED                       | 2' (600) LINE WITH 6' (1.8 m) SPACE  |
| EDGE LINES  | 4 (100)  | SOLID                        | YELLOW-LEFT<br>WHITE-RIGHT                        | OUTLINE MOUNTABLE MEDIANS IN YELLOW; EDGE LINES ARE NOT USED NEXT TO BARRIER CURB  |
| TURN LANE MARKINGS  | 6 (150) LINE; FULL SIZE LETTERS & SYMBOLS (8' (2.4m))                                      | SOLID                        | WHITE   | SEE TYPICAL TURN LANE MARKING DETAIL   |
| TWO WAY LEFT TURN MARKING   | 2 @ 4 (100) EACH DIRECTION<br>8' (2.4m) LEFT ARROW   | SKIP-DASH AND SOLID IN PAIRS | YELLOW<br>WHITE                                   | 10' (3 m) LINE WITH 30' (9 m) SPACE FOR SKIP-DASH; 5 1/2 (140) C-C BETWEEN SOLID LINE AND SKIP-DASH LINE. SEE TYPICAL TWO-WAY LEFT TURN MARKING DETAIL             |
| CROSSWALK LINES (PEDESTRIAN)<br>A. DIAGONALS (BIKE & EQUESTRIAN)<br>B. LONGITUDINAL BARS (SCHOOL) | 2 @ 6 (150)<br>12 (300) @ 45°<br>12 (300) @ 90°  | SOLID<br>SOLID<br>SOLID      | WHITE<br>WHITE<br>WHITE                           | NOT LESS THAN 6' (1.8 m) APART<br>2' (600) APART<br>2' (600) APART<br>SEE TYPICAL CROSSWALK MARKING DETAILS.   |
| STOP LINES  | 24 (600)   | SOLID                        | WHITE   | PLACE 4' (1.2 m) IN ADVANCE OF AND PARALLEL TO CROSSWALK, IF PRESENT. OTHERWISE, PLACE AT DESIRED STOPPING POINT, PARALLEL TO CROSSROAD CENTERLINE, WHERE POSSIBLE |
| PAINTED MEDIANS   | 2 @ 4 (100) WITH 12 (300) DIAGONALS @ 45°<br>NO DIAGONALS USED FOR 4' (1.2 m) WIDE MEDIANS | SOLID                        | YELLOW; TWO WAY TRAFFIC<br>WHITE; ONE WAY TRAFFIC | 11 (280) C-C FOR THE DOUBLE LINE. SEE TYPICAL PAINTED MEDIAN MARKING.  |
| GORE MARKING AND CHANNELIZING LINES   | 8 (200) WITH 12 (300) DIAGONALS @ 45°  | SOLID                        | WHITE   | DIAGONALS:<br>15' (4.5 m) C-C (LESS THAN 30MPH (50 km/h))<br>20' (6 m) C-C 30MPH (50 km/h) TO 45MPH (70 km/h)<br>30' (9 m) C-C (OVER 45MPH (70 km/h))              |
| RAILROAD CROSSING   | 24 (600) TRANSVERSE LINES; "RR" 15 6' (1.8 m) LETTERS; 16 (400) LINE FOR "X"               | SOLID                        | WHITE   | SEE STATE STANDARD 780001<br>AREA OF:<br>"R"=3.6 SQ. FT. (0.33 m <sup>2</sup> ) EACH<br>"X"=54.0 SQ. FT. (5.0 m <sup>2</sup> )                                     |
| SHOULDER DIAGONALS  | 12 (300) @ 45°   | SOLID                        | WHITE - RIGHT<br>YELLOW - LEFT                    | 50' (15 m) C-C (LESS THAN 30MPH (50 km/h))<br>75' (25 m) C-C (30 MPH (50 km/h) TO 45MPH (70 km/h))<br>150' (45 m) C-C (OVER 45MPH (70 km/h))                       |

FOR FURTHER DETAILS ON PAVEMENT MARKING REFER TO STANDARD SPECIFICATIONS FOR ROAD AND BRIDGE CONSTRUCTION AND STATE STANDARD 780001.

All dimensions are in inches (millimeters) unless otherwise shown.