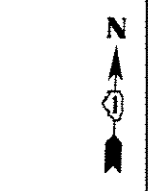


PAVEMENT REMOVAL LEGEND

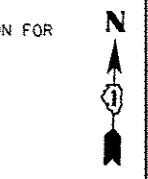
- PAVEMENT REMOVAL
- DRIVEWAY PAVEMENT REMOVAL
- SIDEWALK REMOVAL
- HMA SURFACE REMOVAL, 2 1/4"
- APPROACH SLAB REMOVAL
- PAVED SHOULDER REMOVAL
- CLASS D PATCHES
- LINEAR REMOVAL
- TREE REMOVAL (UNIT)
- REMOVAL (EACH)



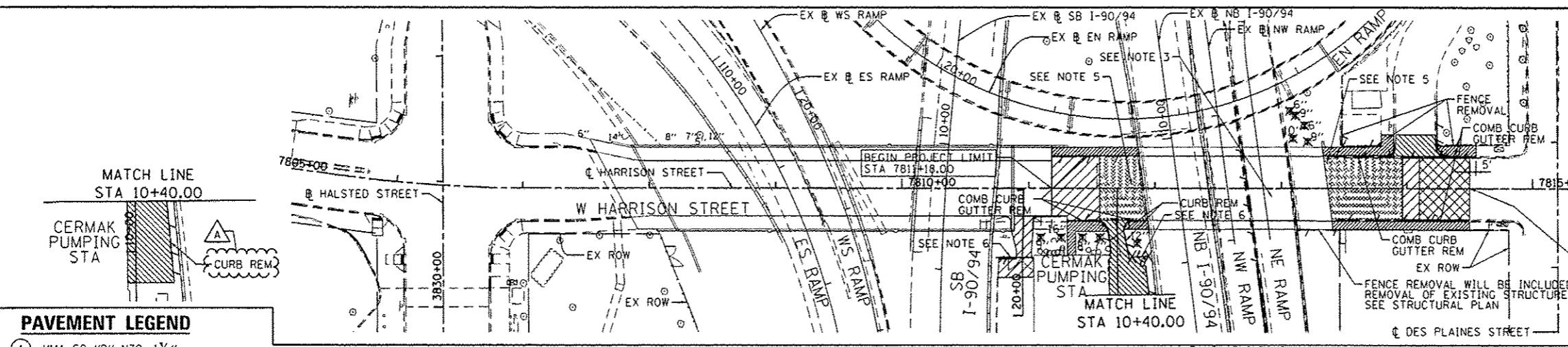
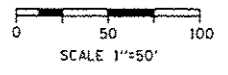
EXISTING

NOTES

1. SEE CURB RAMP DETAIL FOR ADA RAMP INFORMATION.
2. SEE INTERSECTION DETAIL FOR EAST DRIVEWAY AT CERMAK PUMPING STATION.
3. SEE INTERSTATE REMOVAL PLAN FOR ADDITIONAL INFORMATION.
4. SEE INTERSTATE ROADWAY PLAN FOR ADDITIONAL INFORMATION.
5. SEE EX HARRISON STREET BRIDGE PLANS FOR ADDITIONAL INFORMATION FOR EX APPROACH SLAB REMOVAL.
6. SEE FENCING PLAN AT CERMAK PUMPING STATION FOR ADDITIONAL INFORMATION.

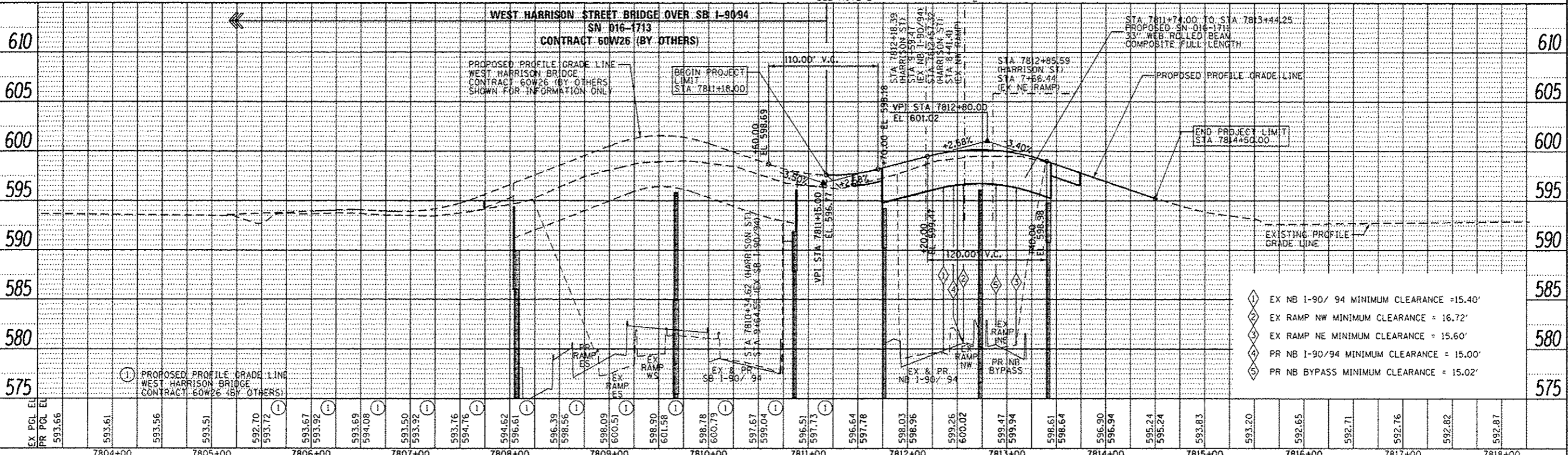


PROPOSED



PAVEMENT LEGEND

- (A) HMA SC "D" N70, 1 1/4"
- (B) HMA BC 1L-19.0 N70, 2 1/4"
- (C) PCC BSE CSE 9
- (D) SUB GRAN MAT B 6
- (E) HMA SC "D" N70, 1 1/2"
- (F) LEV BIND MM N70, 3/4"
- (G) COMB C&G B V.12(CDOT)
- (H) PC CONC SIDEWALK 5
- (I) SUB GRAN MAT B 4
- (J) CONC CURB TB SPL CDOT
- (K) BR APPR PVT CON (FLX)
- (L) BR APPR PAVT (SEE STRUCTRAL PLANS)
- (M) PCC DRIVEWAY PAVT B (SEE NOTE 2)
- (N) DETECTABLE WARNINGS (SPECIAL)
- (O) TEMPORARY CHAIN LINK FENCE
- (P) ORNAMENTAL FENCE, WROUGHT IRON



- 1 EX NB I-90/ 94 MINIMUM CLEARANCE = 15.40'
- 2 EX RAMP NW MINIMUM CLEARANCE = 16.72'
- 3 EX RAMP NE MINIMUM CLEARANCE = 15.60'
- 4 PR NB I-90/94 MINIMUM CLEARANCE = 15.00'
- 5 PR NB BYPASS MINIMUM CLEARANCE = 15.02'

DATE	
BY	
REVISION	
NO.	
DATE	
BY	
REVISION	
NO.	

DATE	
BY	
REVISION	
NO.	
DATE	
BY	
REVISION	
NO.	



DESIGNED - OPS	REVISED - 04/03/2014
DRAWN - OPS	REVISED -
CHECKED - DBM	REVISED -
DATE - 02/19/14	REVISED -

**STATE OF ILLINOIS
DEPARTMENT OF TRANSPORTATION**

**PLAN AND PROFILE
HARRISON STREET**

SCALE: 1"=50' SHEET 1 OF 1 SHEETS STA. TO STA.

F.A.I. RTL.	SECTION	COUNTY	TOTAL SHEETS	SHEET NO.
90/94/250	2013-036R	COOK	256	32
CONTRACT NO. 60W71			ILLINOIS FED. AID PROJECT	