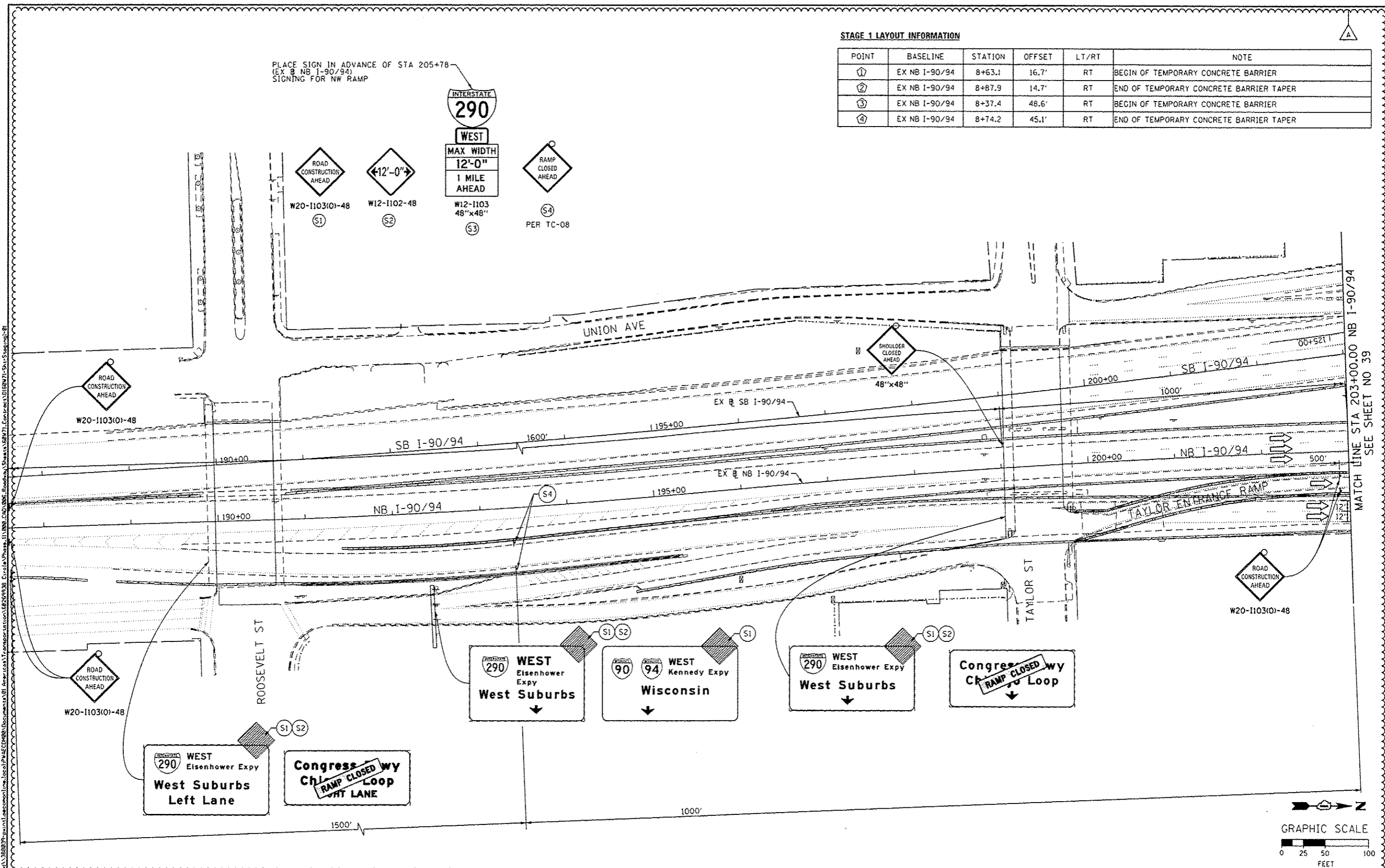


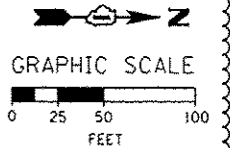
STAGE 1 LAYOUT INFORMATION

POINT	BASELINE	STATION	OFFSET	LT/RT	NOTE
①	EX NB I-90/94	8+63.1	16.7'	RT	BEGIN OF TEMPORARY CONCRETE BARRIER
②	EX NB I-90/94	8+87.9	14.7'	RT	END OF TEMPORARY CONCRETE BARRIER TAPER
③	EX NB I-90/94	8+37.4	48.6'	RT	BEGIN OF TEMPORARY CONCRETE BARRIER
④	EX NB I-90/94	8+74.2	45.1'	RT	END OF TEMPORARY CONCRETE BARRIER TAPER

PLACE SIGN IN ADVANCE OF STA 205+78  
(EX NB I-90/94)  
SIGNING FOR NW RAMP



MATCH LINE STA 203+00.00 NB I-90/94  
SEE SHEET NO 39



D168W71-Shu-Staging-01  
USER NAME: pmaserno  
PLOT SCALE: 1/80,000 / in.  
PLOT DATE: 4/3/2014

DESIGNED - OPS	REVISED - 04/03/2014
DRAWN - OPS	REVISED -
CHECKED - DBM	REVISED -
DATE - 02/19/14	REVISED -

STATE OF ILLINOIS  
DEPARTMENT OF TRANSPORTATION

SUGGESTED STAGES OF CONSTRUCTION AND TRAFFIC CONTROL PLAN  
STAGE 1  
SCALE: 1" = 50' SHEET 1 OF 3 SHEETS STA. TO STA.

F.A.T. RTE. 90/94/290	SECTION 2013-036R	COUNTY COOK	TOTAL SHEETS 256	SHEET NO. 38
CONTRACT NO. GOW71				ILLINOIS FED. AID PROJECT