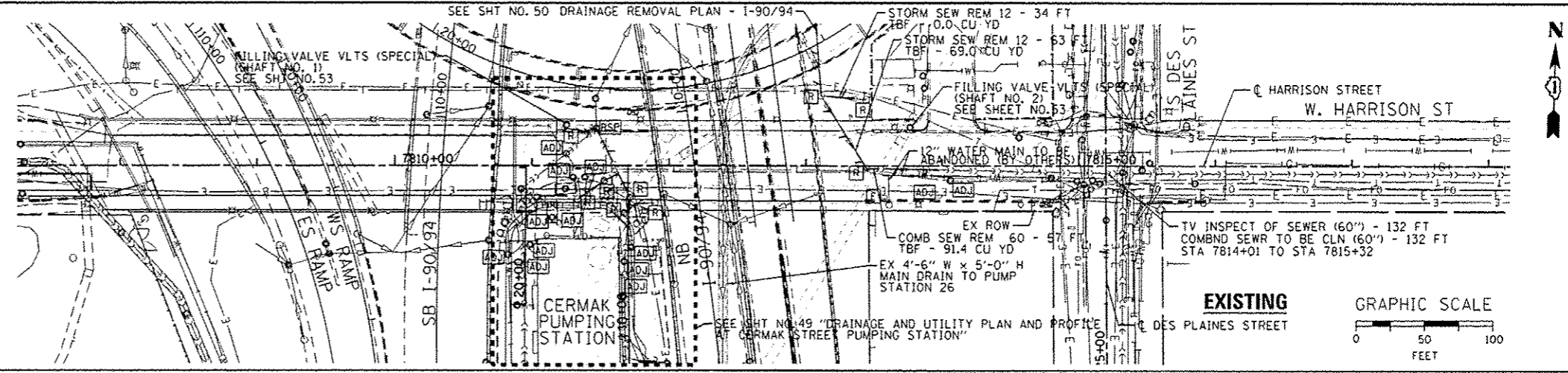
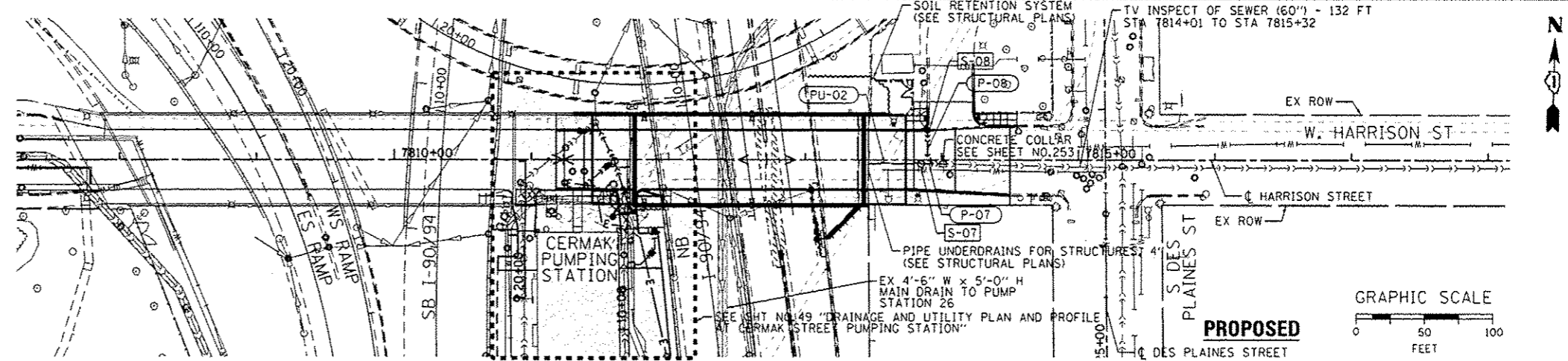


**LEGEND**

- [ADJ] TO BE ADJUSTED
- [RSP] TO BE RECONSTRUCTED (SPECIAL)
- [R] TO BE REMOVED
- [F] TO BE FILLED

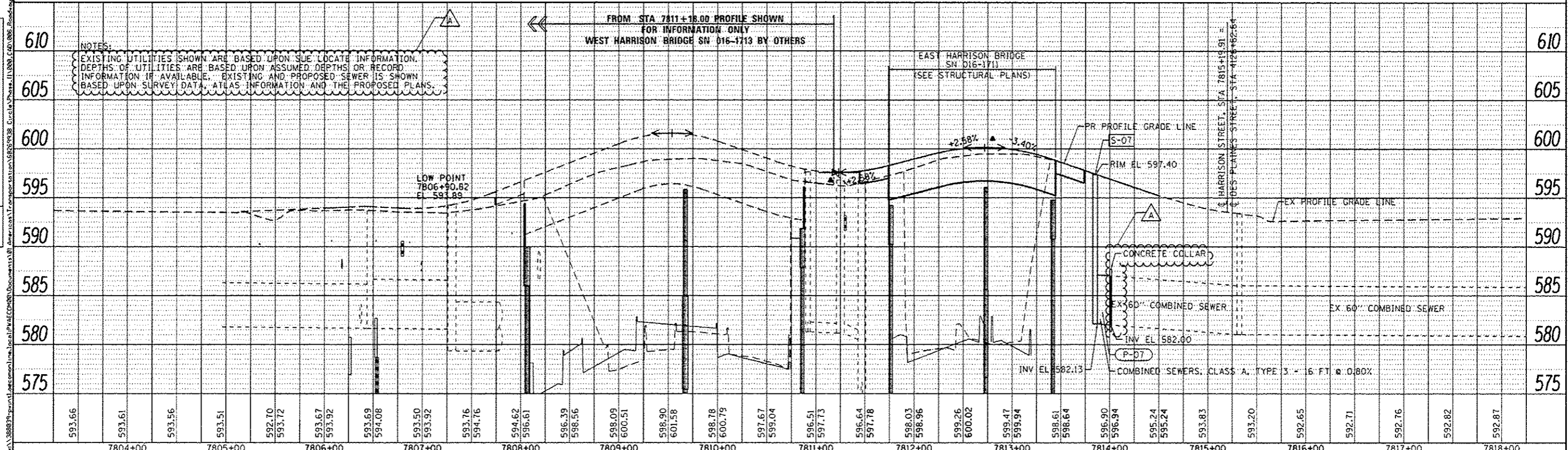


**NOTES:**  
1. SEE LIGHTING AND ITS PLANS FOR REMOVAL AND CONSTRUCTION OF STRUCTURES, DUCTBANKS AND CONDUITS.



**NOTES:**  
EXISTING UTILITIES SHOWN ARE BASED UPON SUE LOCATE INFORMATION. DEPTHS OF UTILITIES ARE BASED UPON ASSUMED DEPTHS OR RECORD INFORMATION IF AVAILABLE. EXISTING AND PROPOSED SEWER IS SHOWN BASED UPON SURVEY DATA, ATLAS INFORMATION AND THE PROPOSED PLANS.

FROM STA 7811+18.00 PROFILE SHOWN  
FOR INFORMATION ONLY  
WEST HARRISON BRIDGE SN 016-1713 BY OTHERS



PLAN	DATE
REVISED	
APPROVED	
BY	
NO.	
NOTE: THIS PLAN IS TO BE USED FOR CONSTRUCTION. ANY CHANGES MUST BE APPROVED BY THE ENGINEER.	

PROFILE	DATE
REVISED	
APPROVED	
BY	
NO.	
NOTE: THIS PROFILE IS TO BE USED FOR CONSTRUCTION. ANY CHANGES MUST BE APPROVED BY THE ENGINEER.	



DIGR071-ent-Drain-01	DESIGNED - AFC/MSC	REVISED - 04/03/2014
USER NAME - chuuu	DRAWN - AFC/MSC	REVISED -
PLOT SCALE - 1/8"=1'-0"	CHECKED - EY/DBM	REVISED -
PLOT DATE - 3/31/2014	DATE - 02/19/14	REVISED -

STATE OF ILLINOIS  
DEPARTMENT OF TRANSPORTATION

DRAINAGE AND UTILITY PLAN AND PROFILE  
HARRISON STREET

SCALE: 1"=50' SHEET 1 OF 1 SHEETS STA. TO STA.

F.A.I. RTE. 90/94/290	SECTION 2013-036R	COUNTY COOK	TOTAL SHEETS 256	SHEET NO. 48
CONTRACT NO. 60W71			ILLINOIS FEDERAL AID PROJECT	