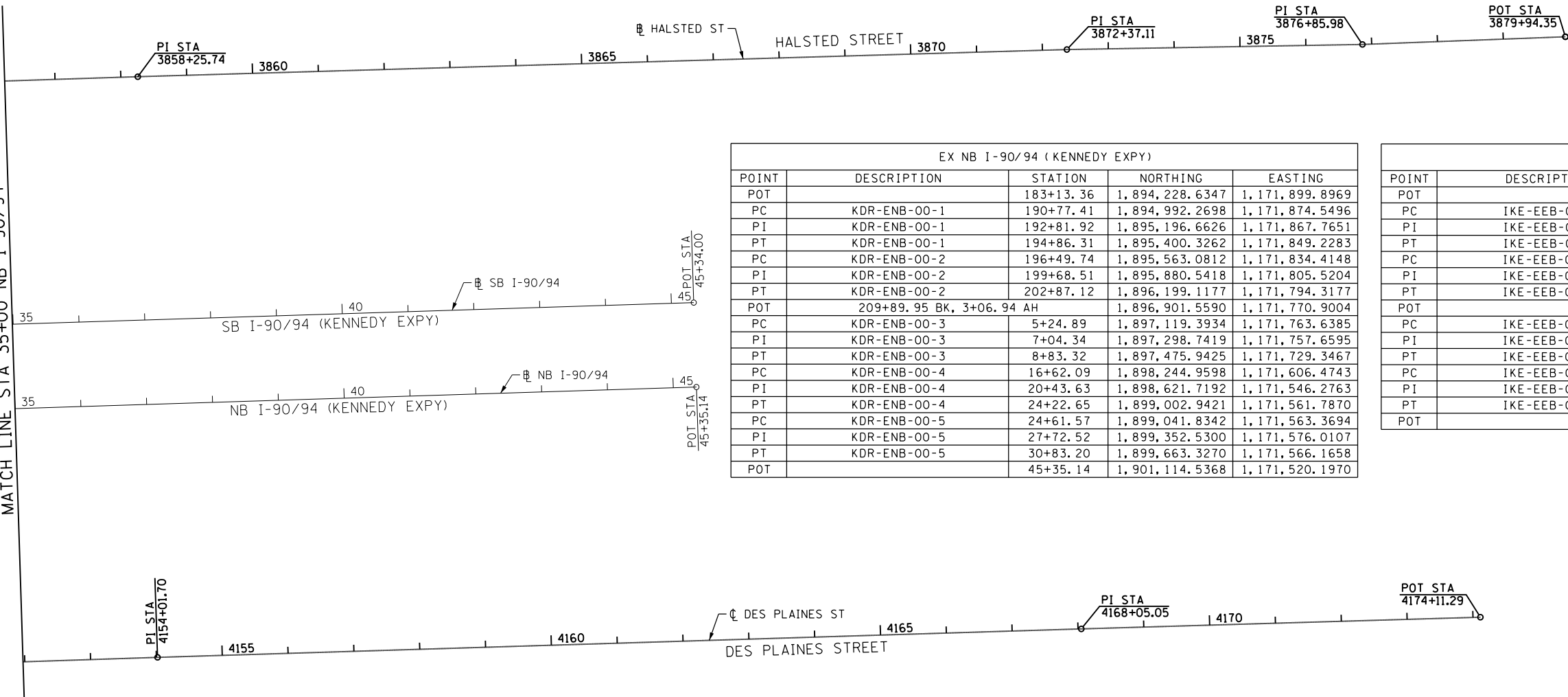


MATCH LINE STA 35+00 NB I-90/94



EX NB I-90/94 (KENNEDY EXPY)				
POINT	DESCRIPTION	STATION	NORTHING	EASTING
POT		183+13.36	1,894,228.6347	1,171,899.8969
PC	KDR-ENB-00-1	190+77.41	1,894,992.2698	1,171,874.5496
PI	KDR-ENB-00-1	192+81.92	1,895,196.6626	1,171,867.7651
PT	KDR-ENB-00-1	194+86.31	1,895,400.3262	1,171,849.2283
PC	KDR-ENB-00-2	196+49.74	1,895,563.0812	1,171,834.4148
PI	KDR-ENB-00-2	199+68.51	1,895,880.5418	1,171,805.5204
PT	KDR-ENB-00-2	202+87.12	1,896,199.1177	1,171,794.3177
POT	209+89.95 BK, 3+06.94 AH		1,896,901.5590	1,171,770.9004
PC	KDR-ENB-00-3	5+24.89	1,897,119.3934	1,171,763.6385
PI	KDR-ENB-00-3	7+04.34	1,897,298.7419	1,171,757.6595
PT	KDR-ENB-00-3	8+83.32	1,897,475.9425	1,171,729.3467
PC	KDR-ENB-00-4	16+62.09	1,898,244.9598	1,171,606.4743
PI	KDR-ENB-00-4	20+43.63	1,898,621.7192	1,171,546.2763
PT	KDR-ENB-00-4	24+22.65	1,899,002.9421	1,171,561.7870
PC	KDR-ENB-00-5	24+61.57	1,899,041.8342	1,171,563.3694
PI	KDR-ENB-00-5	27+72.52	1,899,352.5300	1,171,576.0107
PT	KDR-ENB-00-5	30+83.20	1,899,663.3270	1,171,566.1658
POT		45+35.14	1,901,114.5368	1,171,520.1970

EX EB I-290 (EISENHOWER EXPY)				
POINT	DESCRIPTION	STATION	NORTHING	EASTING
POT		293+88.84	1,897,910.7311	1,165,300.7513
PC	IKE-EEB-00-1	314+72.13	1,897,974.3410	1,167,383.0682
PI	IKE-EEB-00-1	321+86.75	1,897,996.1608	1,168,097.3549
PT	IKE-EEB-00-1	329+00.55	1,897,958.6150	1,168,810.9878
PC	IKE-EEB-00-2	339+78.49	1,897,901.9806	1,169,887.4363
PI	IKE-EEB-00-2	341+00.95	1,897,895.5464	1,170,009.7311
PT	IKE-EEB-00-2	342+23.29	1,897,898.7017	1,170,132.1545
POT		344+82.35	1,897,905.3762	1,170,391.1241
PC	IKE-EEB-00-3	353+59.49	1,897,927.9756	1,171,267.9805
PI	IKE-EEB-00-3	354+82.42	1,897,931.1429	1,171,390.8707
PT	IKE-EEB-00-3	356+05.32	1,897,939.5781	1,171,513.5119
PC	IKE-EEB-00-4	356+51.86	1,897,942.7715	1,171,559.9401
PI	IKE-EEB-00-4	357+76.88	1,897,951.3501	1,171,684.6669
PT	IKE-EEB-00-4	359+01.86	1,897,954.4801	1,171,809.6491
POT		368+91.13	1,897,979.2472	1,172,798.6113

EX WB I-290 (EISENHOWER EXPY)				
POINT	DESCRIPTION	STATION	NORTHING	EASTING
POT		293+90.95	1,898,109.2305	1,165,314.6967
TS	IKE-EWB-00-1B	322+24.26	1,898,195.6075	1,168,146.6931
PIS	IKE-EWB-00-1B	323+57.62	1,898,199.6729	1,168,279.9836
SC	IKE-EWB-00-1	324+24.26	1,898,198.2148	1,168,346.6517
PI	IKE-EWB-00-1	325+38.06	1,898,195.7265	1,168,460.4198
CS	IKE-EWB-00-1	326+51.59	1,898,179.7466	1,168,573.0875
PIS	IKE-EWB-00-1A	327+18.26	1,898,170.3839	1,168,639.1010
ST	IKE-EWB-00-1A	328+51.56	1,898,144.7784	1,168,769.9517
TS	IKE-EWB-00-2B	329+78.32	1,898,120.4341	1,168,894.3575
PIS	IKE-EWB-00-2B	331+11.67	1,898,094.8247	1,169,025.2278
SC	IKE-EWB-00-2	331+78.32	1,898,085.4611	1,169,091.2512
PI	IKE-EWB-00-2	332+11.06	1,898,080.8638	1,169,123.6666
CS	IKE-EWB-00-2	332+43.79	1,898,077.3803	1,169,156.2204
PIS	IKE-EWB-00-2A	333+10.47	1,898,070.2861	1,169,222.5160
ST	IKE-EWB-00-2A	334+43.76	1,898,063.0562	1,169,355.6523
PC	IKE-EWB-00-3	338+11.32	1,898,043.1252	1,169,722.6716
PI	IKE-EWB-00-3	340+66.38	1,898,029.2947	1,169,977.3536
PT	IKE-EWB-00-3	343+21.10	1,898,038.1489	1,170,232.2572
TS	IKE-EWB-00-4B	352+47.24	1,898,070.2993	1,171,157.8387
PIS	IKE-EWB-00-4B	353+47.25	1,898,073.7709	1,171,257.7841
SC	IKE-EWB-00-4	353+97.24	1,898,073.8709	1,171,307.7891
PI	IKE-EWB-00-4	354+73.38	1,898,074.0231	1,171,383.9319
CS	IKE-EWB-00-4	355+49.47	1,898,069.1215	1,171,459.9169
PIS	IKE-EWB-00-4A	355+99.47	1,898,065.9031	1,171,509.8083
ST	IKE-EWB-00-4A	356+99.44	1,898,056.2063	1,171,609.3226
TS	IKE-EWB-00-5B	359+16.74	1,898,035.1324	1,171,825.5961
PIS	IKE-EWB-00-5B	360+16.74	1,898,025.4337	1,171,925.1303
SC	IKE-EWB-00-5	360+66.74	1,898,022.2149	1,171,975.0317
PI	IKE-EWB-00-5	361+31.77	1,898,018.0288	1,172,039.9323
CS	IKE-EWB-00-5	361+96.78	1,898,017.5295	1,172,104.9659
PIS	IKE-EWB-00-5A	362+46.77	1,898,017.1456	1,172,154.9595
ST	IKE-EWB-00-5A	363+46.75	1,898,019.6488	1,172,254.9138
POT		368+89.26	1,898,033.2310	1,172,797.2593

EX SB I-90/94 (KENNEDY EXPY)				
POINT	DESCRIPTION	STATION	NORTHING	EASTING
POT		183+13.36	1,894,226.7720	1,171,843.7613
PC	KDR-ESB-00-1	185+50.30	1,894,463.5855	1,171,835.9008
PI	KDR-ESB-00-1	186+12.11	1,894,525.3637	1,171,833.8503
PT	KDR-ESB-00-1	186+73.92	1,894,587.1007	1,171,830.8004
PC	KDR-ESB-00-2	186+73.95	1,894,587.1274	1,171,830.7991
PI	KDR-ESB-00-2	194+46.34	1,895,358.5739	1,171,792.6885
PT	KDR-ESB-00-2	202+17.88	1,896,124.4241	1,171,692.4111
POT	209+97.19 BK, 3+11.60 AH		1,896,897.1317	1,171,591.2358
TS	KDR-ESB-00-3B	5+79.29	1,897,162.5525	1,171,556.4826
PIS	KDR-ESB-00-3B	6+79.30	1,897,261.7152	1,171,543.4986
SC	KDR-ESB-00-3	7+29.29	1,897,311.5276	1,171,539.0772
PI	KDR-ESB-00-3	8+34.32	1,897,416.1453	1,171,529.7912
CS	KDR-ESB-00-3	9+39.11	1,897,521.1330	1,171,532.7356
PIS	KDR-ESB-00-3A	9+89.11	1,897,571.1183	1,171,534.1374
ST	KDR-ESB-00-3A	10+89.10	1,897,670.8779	1,171,541.1020
TS	KDR-ESB-00-4B	10+95.19	1,897,676.9607	1,171,541.5267
PIS	KDR-ESB-00-4B	12+28.55	1,897,809.9894	1,171,550.8139
SC	KDR-ESB-00-4	12+95.19	1,897,876.6634	1,171,551.9707
PI	KDR-ESB-00-4	13+66.51	1,897,947.9712	1,171,553.2078
CS	KDR-ESB-00-4	14+37.76	1,898,019.1728	1,171,549.1239
PIS	KDR-ESB-00-4A	15+04.45	1,898,085.7441	1,171,545.3056
ST	KDR-ESB-00-4A	16+37.75	1,898,218.2892	1,171,530.7143
PC	KDR-ESB-00-5	16+76.77	1,898,257.0735	1,171,526.4446
PI	KDR-ESB-00-5	19+84.85	1,898,563.3008	1,171,492.7332
PT	KDR-ESB-00-5	22+92.78	1,898,870.8971	1,171,475.5242
PC	KDR-ESB-00-6	25+30.01	1,899,107.7534	1,171,462.2729
PI	KDR-ESB-00-6	28+07.67	1,899,384.9870	1,171,446.7626
PT	KDR-ESB-00-6	30+85.31	1,899,662.5150	1,171,437.9735
POT		45+34.00	1,901,110.4797	1,171,392.1175

PR VAN BUREN STREET				
POINT	DESCRIPTION	STATION	NORTHING	EASTING
POT		8100+00.00	1,898,259.3220	1,166,490.9835
PI		8125+63.42	1,898,338.2206	1,169,053.1845
PI		8146+24.60	1,898,397.0221	1,171,113.5263
POT		8171+35.75	1,898,460.2841	1,173,623.8877

PR HARRISON STREET				
POINT	DESCRIPTION	STATION	NORTHING	EASTING
POT		7798+00.00	1,897,559.2104	1,170,301.2209
PI		7802+87.02	1,897,574.4743	1,170,788.0041
PC	P-HAR-CL-1	7805+53.90	1,897,545.0894	1,171,053.2542
PI	P-HAR-CL-1	7806+31.79	1,897,536.5125	1,171,130.6756
PT	P-HAR-CL-1	7807+09.45	1,897,538.4543	1,171,208.5464
POT		7823+18.99	1,897,578.5778	1,172,817.5931

PR DES PLAINES STREET				
POINT	DESCRIPTION	STATION	NORTHING	EASTING
POT		4100+00.00	1,894,897.3602	1,172,103.4101
PI		4143+90.91	1,899,286.0495	1,171,963.8051
PI		4154+01.70	1,900,296.2890	1,171,930.4175
PI		4168+05.05	1,901,698.9691	1,171,887.2201
POT		4174+11.29	1,902,304.9557	1,171,869.4907



D:\6071-Sht-ATB-03.dgn
 USER NAME = pimsarno
 PLOT SCALE = 100.0000' / 1"
 PLOT DATE = 12/19/2013

DESIGNED - OPS	REVISED -
DRAWN - PHP	REVISED -
CHECKED - DBM	REVISED -
DATE - 12/20/13	REVISED -

STATE OF ILLINOIS
 DEPARTMENT OF TRANSPORTATION

ALIGNMENT, TIES AND BENCHMARKS

SCALE: 1" = 100' SHEET 3 OF 5 SHEETS STA. TO STA.

F.A.I. RTE.	SECTION	COUNTY	TOTAL SHEETS	SHEET NO.
90/94/290	2013-036R	COOK	256	29
CONTRACT NO. 60W71				
ILLINOIS FED. AID PROJECT				