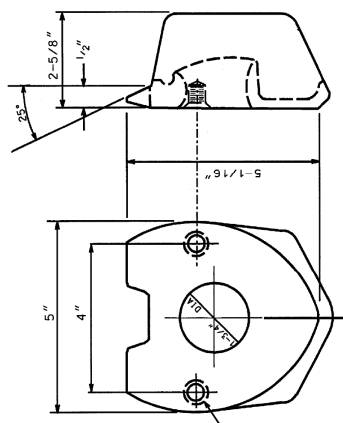
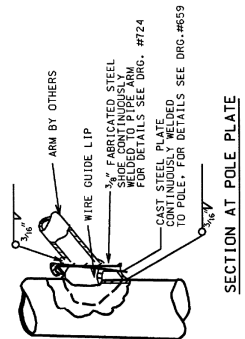
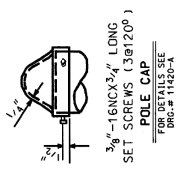
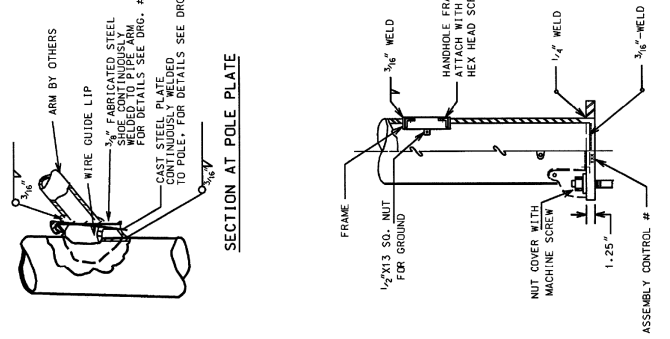
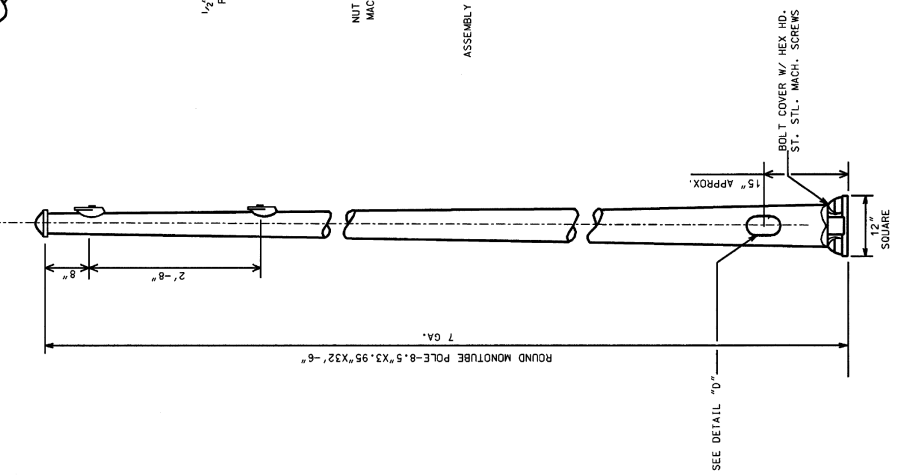


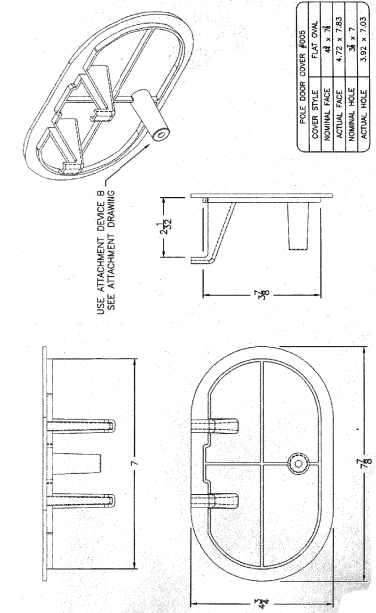
FILE PATH = p:\388035\pmt\ecomonline\local\p\AECOM\Documents\01_Americas\Transportation\62629938_Circle\Phase_1\1000_CAD\016_Electrical\Sheets\60W71_Contract\160W71-sht-Light-14



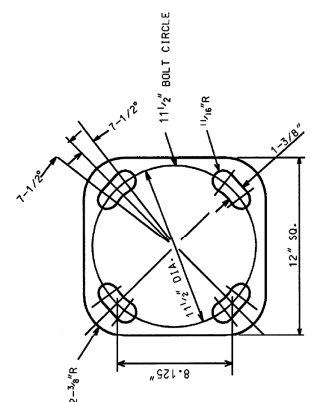
2 BOLT MAST ATTACHMENT
FOR DETAILS SEE DRG. # 659 MATERIAL: CAST STEEL



DETAIL "D"



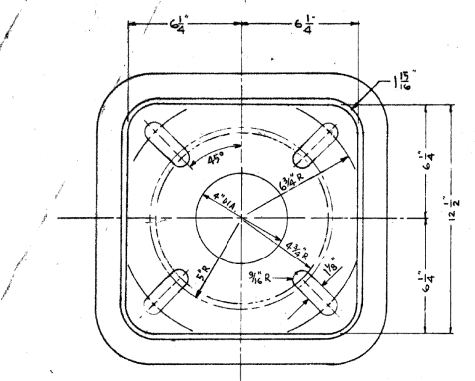
HANDHOLE DETAIL



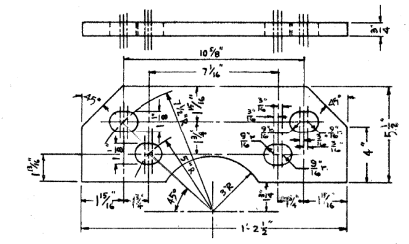
DETAIL "A"

3.95" x 8.5" STEEL / 32' - 6" POLE
7 GAUGE

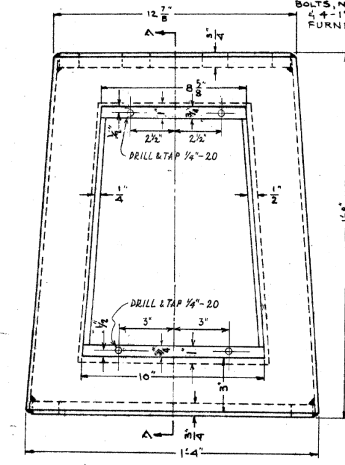
CITY OF CHICAGO DEPT. OF STREETS & ELECTRICITY	ENGINEER: ROBERT CARTER	DWG. NO. 762
DRAFTSMAN: ROBERT IVY	SUPERVISING ENGINEER: ELEC. DESIGN ENGR. ROBERT CARTER	DEPUTY COMMISSIONER Plan S. Murphy



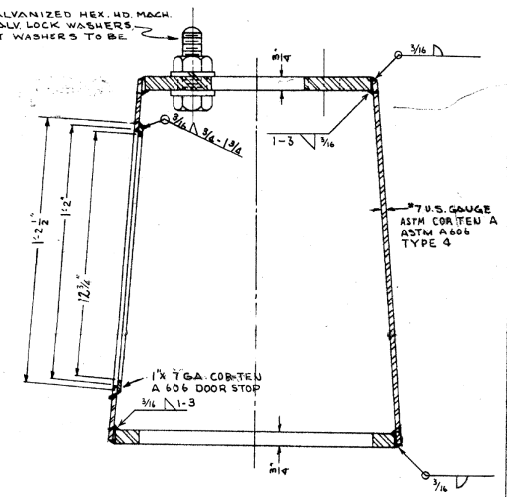
TOP VIEW



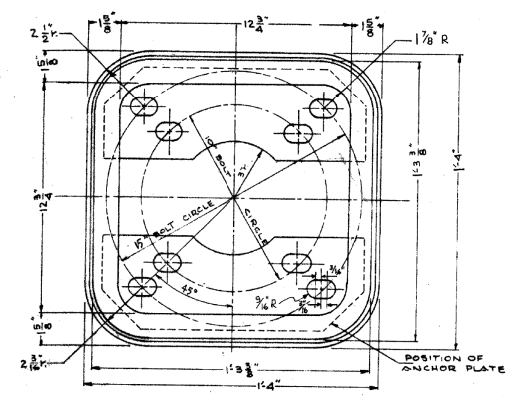
ANCHOR PLATE
2-REQUIRED
FABRICATED FROM 3/4"
ASTM A-36 STEEL



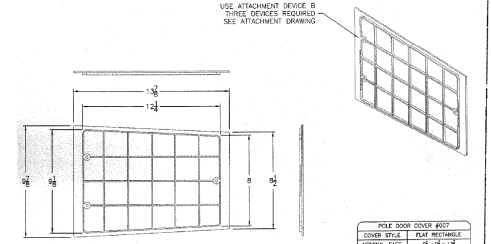
FRONT VIEW



SECTION A-A



BOTTOM VIEW
WITH ANCHOR PLATE IN PLACE



DOOR

BALLAST HOUSING BASE WITH ANCHOR PLATES FOR 10" & 15" BOLT CIRCLE

REVISED	CITY OF CHICAGO DEPT. OF STREETS & ELECTRICITY DIVISION OF ELECTRICAL ENGINEERING		
A. APR 15, 1981	DRAWN E. GERRILLIS	CHECKED M. J. SHINE	ENGINEER M. R. GREEN
B. OCT 19, 1981	REVISIONS		
C.	785		
D.	DATE: MARCH 25, 1977		
E.	SCALE: 3" = 1'-0"		
F.	SIZE: 14" x 25"		
G.	DATE: MARCH 25, 1977		

NOTE
THIS DRAWING
REPLACES H872



D160W71-sht-Light-14
USER NAME = myersc
PLOT SCALE = 1:8000 / 1 in.
PLOT DATE = 12/18/2013

DESIGNED - WDS	REVISED -
DRAWN - CAM	REVISED -
CHECKED - WDS	REVISED -
DATE - 12/20/13	REVISED -

STATE OF ILLINOIS
DEPARTMENT OF TRANSPORTATION

MISCELLANEOUS ELECTRICAL DETAILS

SCALE: N.T.S. SHEET 14 OF 19 SHEETS STA. TO STA.

F.A.I. RTE. 90/94/290	SECTION 2013-036R	COUNTY COOK	TOTAL SHEETS 256	SHEET NO. 86
CONTRACT NO. 60W71				
ILLINOIS FED. AID PROJECT				