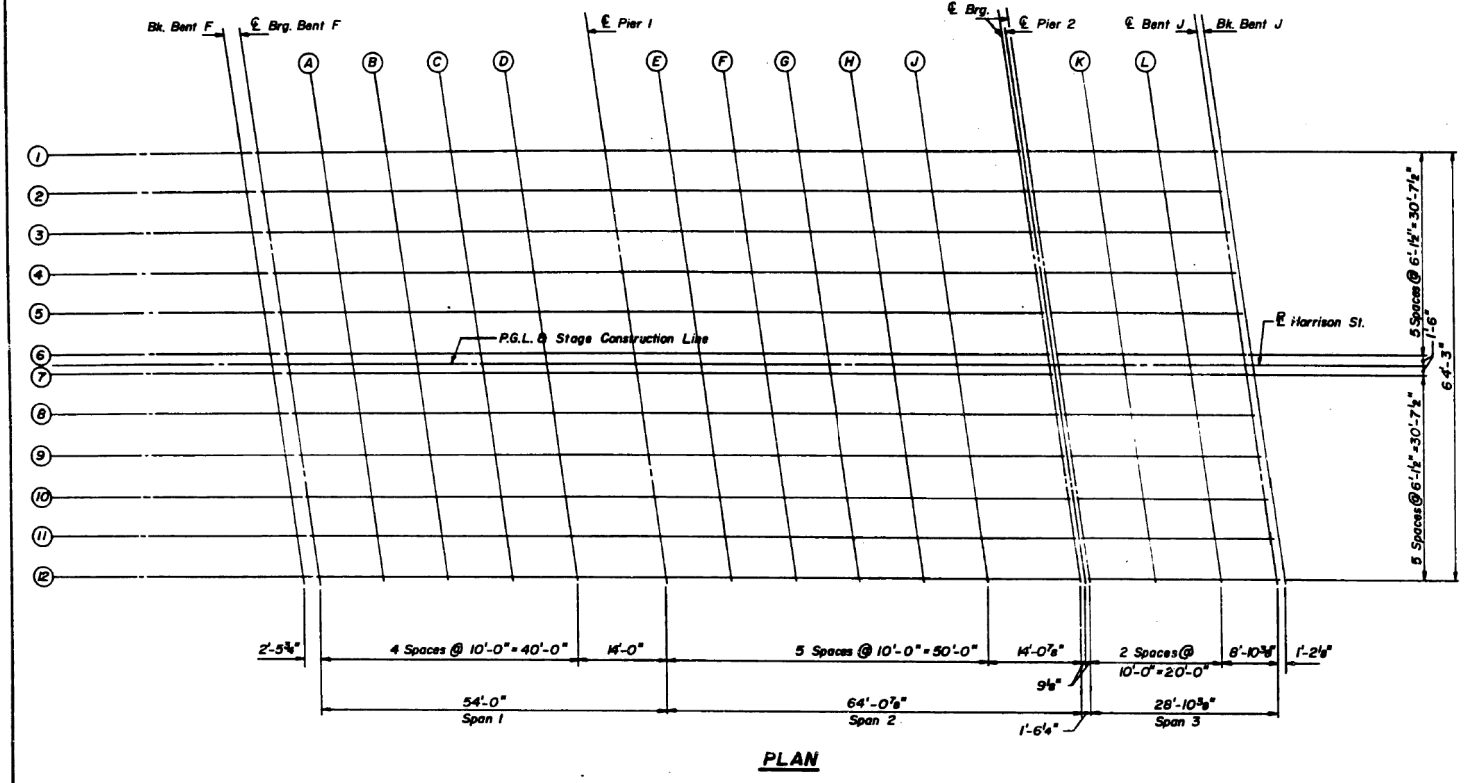


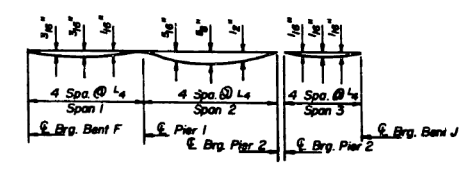
FOR INFORMATION ONLY

STATE OF ILLINOIS  
DEPARTMENT OF TRANSPORTATION

SECTION NO.	SECTION	COUNTY	TOTAL SHEETS	SHEET NO.
90/94	8	COOK	256	150
TO BE				
F.A.I. PROJECT				
1985-080 R				

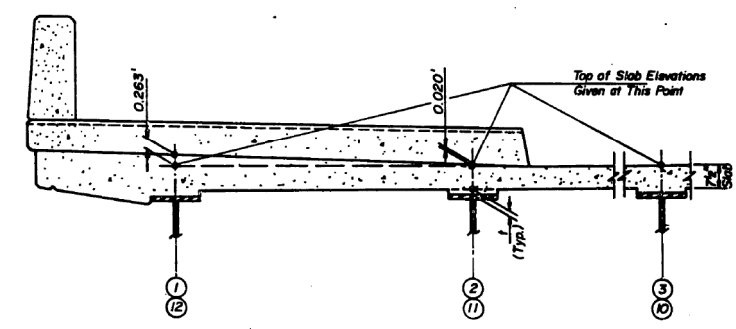


PLAN



DEAD LOAD DEFLECTION DIAGRAM

(Includes weight of concrete only)  
Note: The above deflections are not to be used in the field if the engineer is working from the grade elevations adjusted for dead load deflection as shown.



To determine "f": After all structural steel has been erected, elevations of the top flanges of the beams shall be taken at intervals shown. These elevations subtracted from the "Theoretical Grade Elevations Adjusted for Dead Load Deflection" shown, minus slab thickness, equals the fillet heights "f" above top flange of beams.

FILLET HEIGHTS

SHEET 9-5 OF 9-17

STATE OF ILLINOIS  
DEPARTMENT OF TRANSPORTATION  
F.A.I. ROUTE 90/94 (DAN RYAN EXPRESSWAY)  
SECTION 1985-080 R - COOK COUNTY  
HARRISON STREET OVER DAN RYAN EXPRESSWAY  
DECK ELEVATION LOCATION PLAN

Scale: None  
Date: AUGUST 14, 1987  
Drawn By: S.D.D.  
Checked By:  
ENVIRODYNE ENGINEERS INC.  
Chicago, Illinois

REVISIONS	
NAME	DATE

PLANS PREPARED BY  
P.A. ENGINEERING ASSOCIATES, INC.  
800 WEST JACKSON BLVD.  
CHICAGO ILLINOIS, 60608

D160W71-sh1-AS-BUILT-08.dgn

USER NAME = dunkerleyb	DESIGNED -	REVISED	STATE OF ILLINOIS DEPARTMENT OF TRANSPORTATION	EXISTING AS-BUILTS SN 016-1088	F.A.I. RTE.	SECTION	COUNTY	TOTAL SHEETS	SHEET NO.	
	CHECKED -	REVISED			90/94/290	2013-036R	COOK	256	150	
PLOT SCALE = N.T.S.	DRAWN -	REVISED			CONTRACT NO. 60W71					
PLOT DATE = 11/26/2013	CHECKED -	REVISED			ILLINOIS FED. AID PROJECT -NUMBER-					