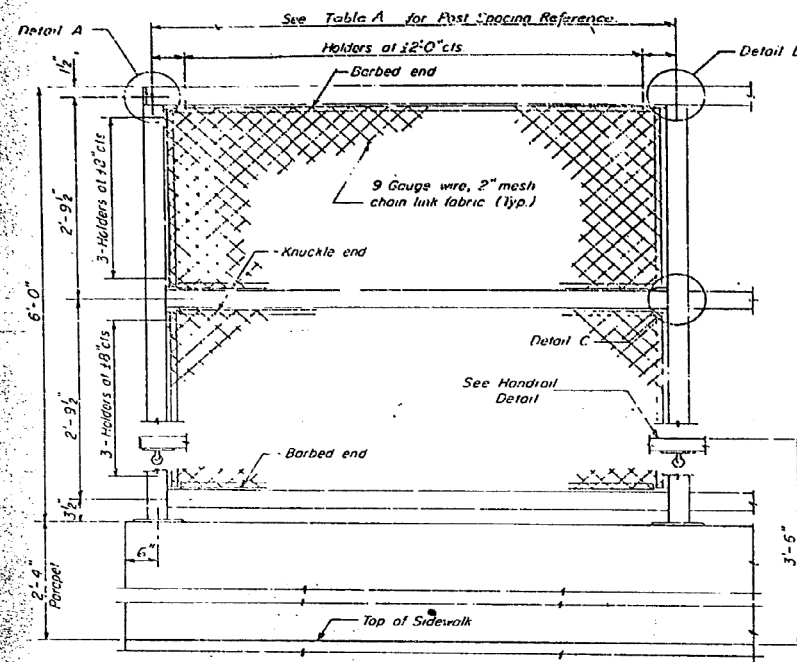


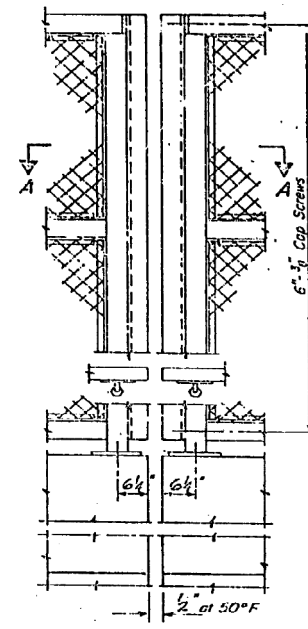
FOR INFORMATION ONLY

STATE OF ILLINOIS
DEPARTMENT OF TRANSPORTATION

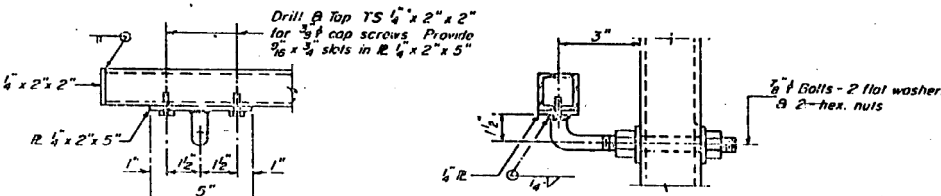
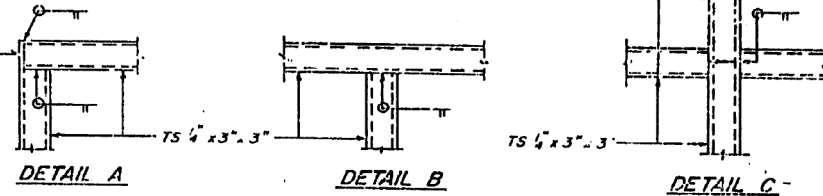
DATE	90/94	BY	COOK	TS	TS
REV. NO.		ILLINOIS	TRN. / TO PROJECT		
W 1085-080 R					



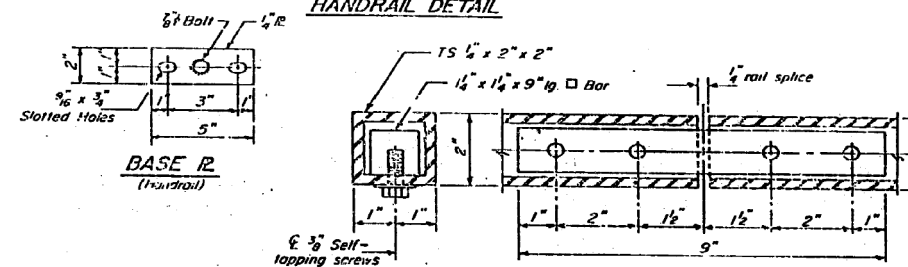
ELEVATION
(Inside Face)



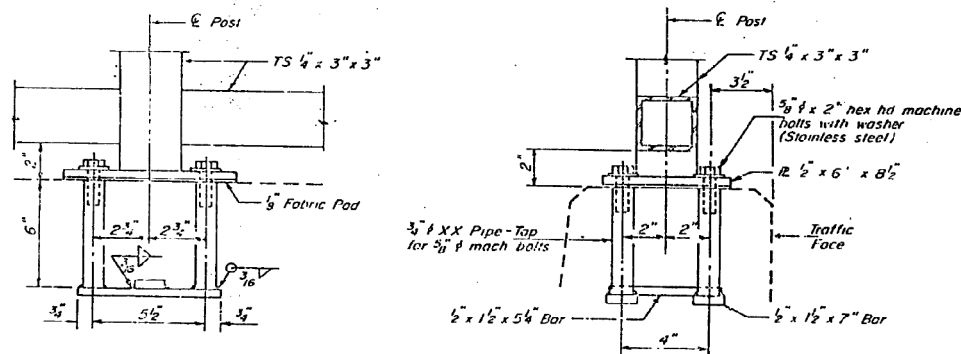
ELEVATION
(At Expansion Joint)



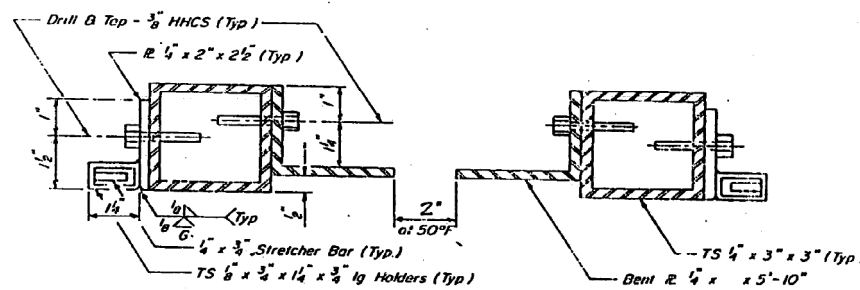
HANDRAIL DETAIL



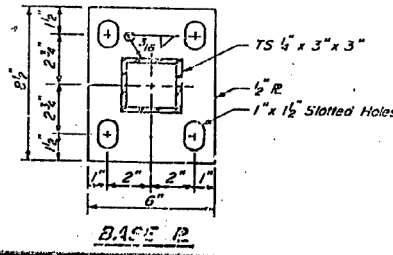
HANDRAIL SPLICE



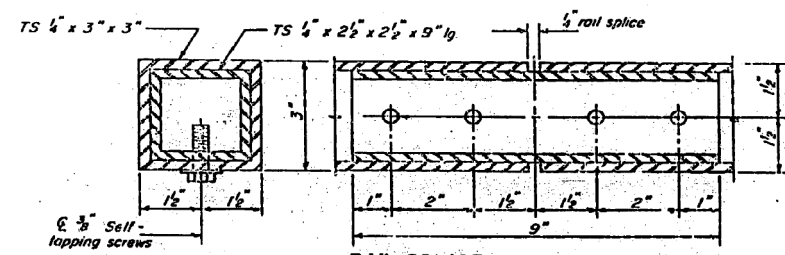
ANCHOR BOLT DETAILS



SECTION A-A



BASE R



RAIL SPLICE

NOTES

Railing shall be in accordance with Section 306 of the Standard Specifications, except as noted, and shall be paid for at the Contract Unit Price per linear foot for Pedestrian Railing. The 9 gauge fabric lies shall be in accordance with Article 710.33(1) of the Standard Specifications.

Installation of the chain link fabric shall be in accordance Section 629 of the Standard Specifications

Hollow structural steel tubing shall conform to the requirements of ASTM designation A 500, Grade B, structural steel tubing

All other steel shapes and plates shall conform to the requirements of AASHTO M33.

Notes

All posts, railing, splices, anchor devices and bent plates shall be galvanized after shop fabrication in accordance with AASHTO M-111 and ASTM A-363. All bolts, nuts and washers shall be galvanized in accordance with AASHTO M-232.

Vent holes for galvanizing shall be placed in the posts and rails at locations that will not allow the accumulation of moisture in the members.

The chain link fabric shall conform to the requirements of Article 710.33(a)(1)(c) of the Std. Specs.

BILL OF MATERIAL

ITEM	UNIT	QUANTITY
Pedestrian Railing	L.F.	879

TABLE A - POST SPACING REFERENCE

STRUCTURE	SEE SHEET No.
Taylor Street Entrance Ramp	FIN-13
Harrison Street over S.B. DAN RYAN EXP.	HAR-5B
Harrison Street over N.B. DAN RYAN EXP.	S-9 & S-15

SHEET MD 6 OF 8

STATE OF ILLINOIS
DEPARTMENT OF TRANSPORTATION
F.A.I. ROUTE 90/94 (DAN RYAN EXPRESSWAY)
SECTION 1985-080 R - COOK COUNTY
ROADWAY GRADING AND PAVING
MISCELLANEOUS DETAILS - ALL STRUCTURES
PEDESTRIAN RAILING - 6'

Scale: NONE
Date: AUGUST 14, 1987
Drawn By: REP
Checked By: WPK

ENVIRONMENTAL ENGINEERS INC.
Chicago, Illinois

REVISIONS	Name	Date
1	Revision	3-11-83

USER NAME = dunkerleyb	DESIGNED -	REVISED -
	CHECKED -	REVISED -
PLOT SCALE = N.T.S.	DRAWN -	REVISED -
PLOT DATE = 11/26/2013	CHECKED -	REVISED -

STATE OF ILLINOIS
DEPARTMENT OF TRANSPORTATION

EXISTING AS-BUILTS SN 016-1088

SHEET NO. AS-26 OF AS-72 SHEETS

F.A.I. RTE.	SECTION	COUNTY	TOTAL SHEETS	SHEET NO.
90/94/290	2013-036R	COOK	256	168
				CONTRACT NO. 60W71
ILLINOIS FED. AID PROJECT -NUMBER-				

D:\60W71-SHT-AS-BUILT-26.dgn