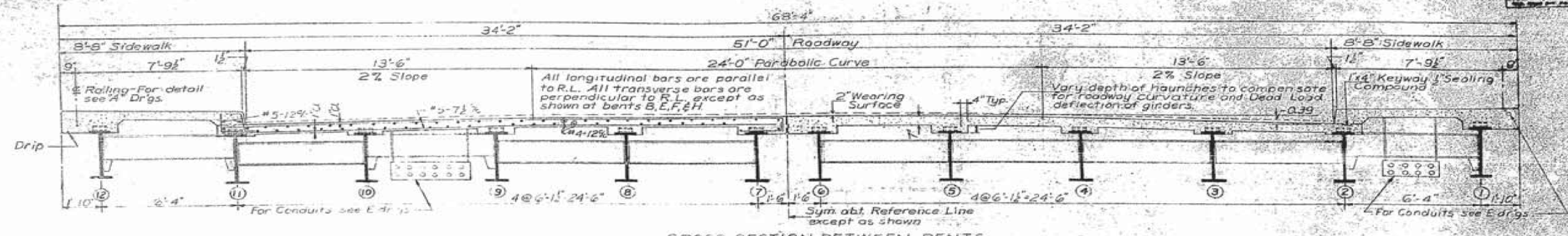


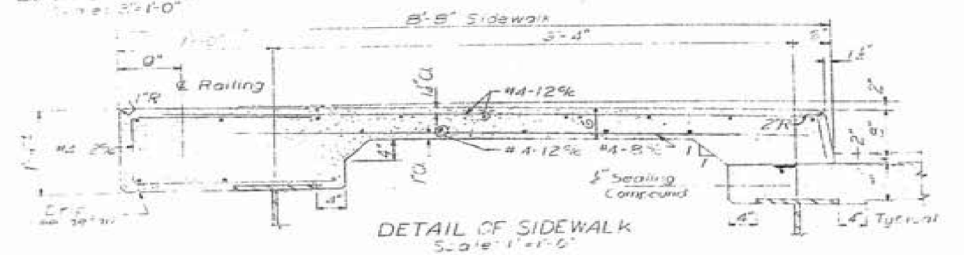
FOR INFORMATION ONLY

DATE	DESIGNED BY	CHECKED BY	SCALE
7/0	F.A.I. 024422	COOK	70

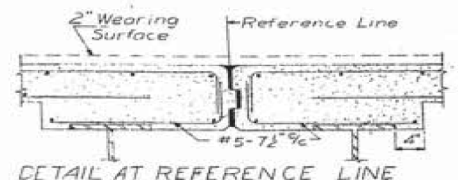


CROSS SECTION BETWEEN BENTS
LOOKING WEST
Scale: 3"=1'-0"

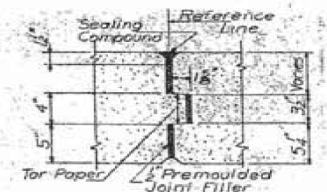
DETAIL OF DRIP
Scale: 3"=1'-0"



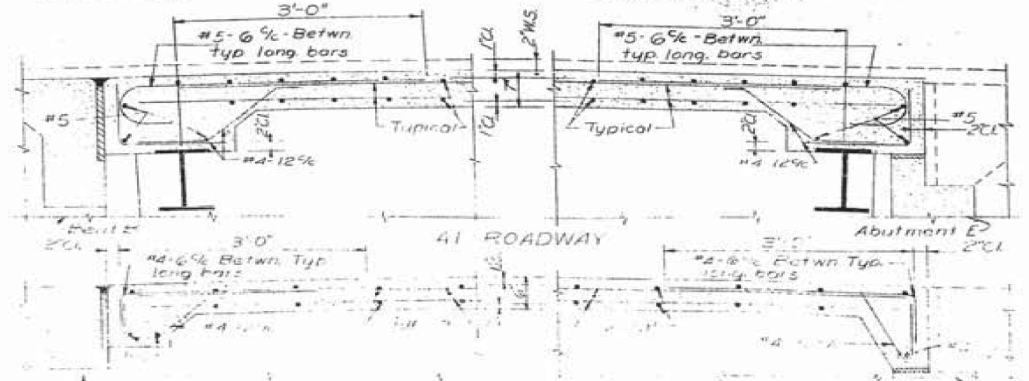
DETAIL OF SIDEWALK
Scale: 3"=1'-0"



DETAIL AT REFERENCE LINE
Scale: 1"=1'-0"



LONGITUDINAL EXPANSION JOINT



PLAN VIEW BETWEEN BENTS AND ABUTMENTS
Scale: 1"=1'-0"

- Notes:
 Key Plan and General Notes Sheet 51
 Back Walls Sheet 52
 Concrete Deck Framing Sheets 53, 54, 55
 Structural Steel Sheets 56, 57, 58
 Deck Slab Plan and Sections Sheet 59

SOUTH ROUTE SUPERSTRADE

DECK SLAB REINFORCEMENT

D:\60W71-sht-AS-BUILT-50.dgn

USER NAME = dunkerleyb	DESIGNED -	REVISED
	CHECKED -	REVISED
PLOT SCALE = N.T.S.	DRAWN -	REVISED
PLOT DATE = 11/26/2013	CHECKED -	REVISED

STATE OF ILLINOIS
DEPARTMENT OF TRANSPORTATION

EXISTING AS-BUILTS SN 016-1088

SHEET NO. AS-50 OF AS-72 SHEETS

F.A.I. RTE.	SECTION	COUNTY	TOTAL SHEETS	SHEET NO.
90/94/290	2013-036R	COOK	256	192
CONTRACT NO. 60W71				
ILLINOIS FED. AID PROJECT -NUMBER-				