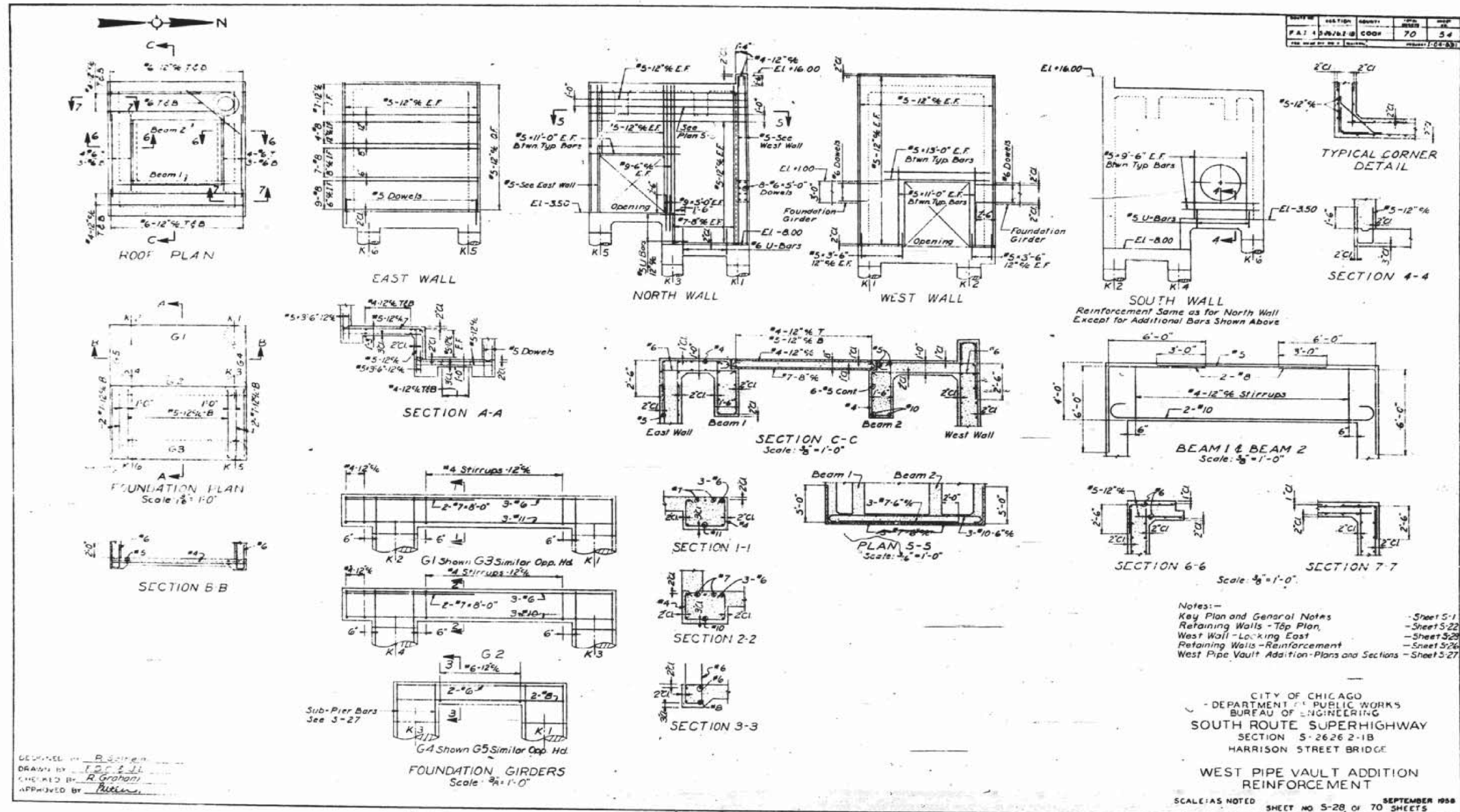


FOR INFORMATION ONLY



DESIGNED BY: B. Smith  
 DRAWN BY: J. D. J.  
 CHECKED BY: R. Graham  
 APPROVED BY: [Signature]

Notes:-  
 Key Plan and General Notes - Sheet 5-1  
 Retaining Walls - Top Plan - Sheet 5-22  
 West Wall - Locking East - Sheet 5-23  
 Retaining Walls - Reinforcement - Sheet 5-24  
 West Pipe Vault Addition - Plans and Sections - Sheet 5-27

CITY OF CHICAGO  
 DEPARTMENT OF PUBLIC WORKS  
 BUREAU OF ENGINEERING  
 SOUTH ROUTE SUPERHIGHWAY  
 SECTION 5-2626 2-1B  
 HARRISON STREET BRIDGE  
 WEST PIPE VAULT ADDITION  
 REINFORCEMENT  
 SCALE: AS NOTED SHEET NO. 5-28, OF 70 SHEETS  
 SEPTEMBER 1998

D:\60W71-sht-AS-BUILT-59.dgn

USER NAME = dunkerleyb	DESIGNED -	REVISED -
	CHECKED -	REVISED -
PLOT SCALE = N.T.S.	DRAWN -	REVISED -
PLOT DATE = 11/26/2013	CHECKED -	REVISED -

STATE OF ILLINOIS  
 DEPARTMENT OF TRANSPORTATION

EXISTING AS-BUILTS SN 016-1088

SHEET NO. AS-59 OF AS-72 SHEETS

F.A.I. R.E.	SECTION	COUNTY	TOTAL SHEETS	SHEET NO.
90/94/290	2013-036R	COOK	256	201
CONTRACT NO. 60W71				
ILLINOIS FED. AID PROJECT -NUMBER-				