

TBM "A"

CUT "+ " ON TOP OF A 22" CULVERT HEADWALL EASTERLY CORNER OF NW CORNER OF 159TH STREET AND TORRENCE AVENUE. ELEV.= 559.810

TBM "B"

CUT "+ " ON WEST SIDE OF A CONC. TRAFFIC LIGHT POLE BASE AT THE NE CORNER OF RIVER OAKS CENTER DRIVE (FIRST ENTRANCE DRIVE SOUTH OF 159TH STREET) AND TORRENCE AVENUE. ELEV.= 600.673

TBM "C"

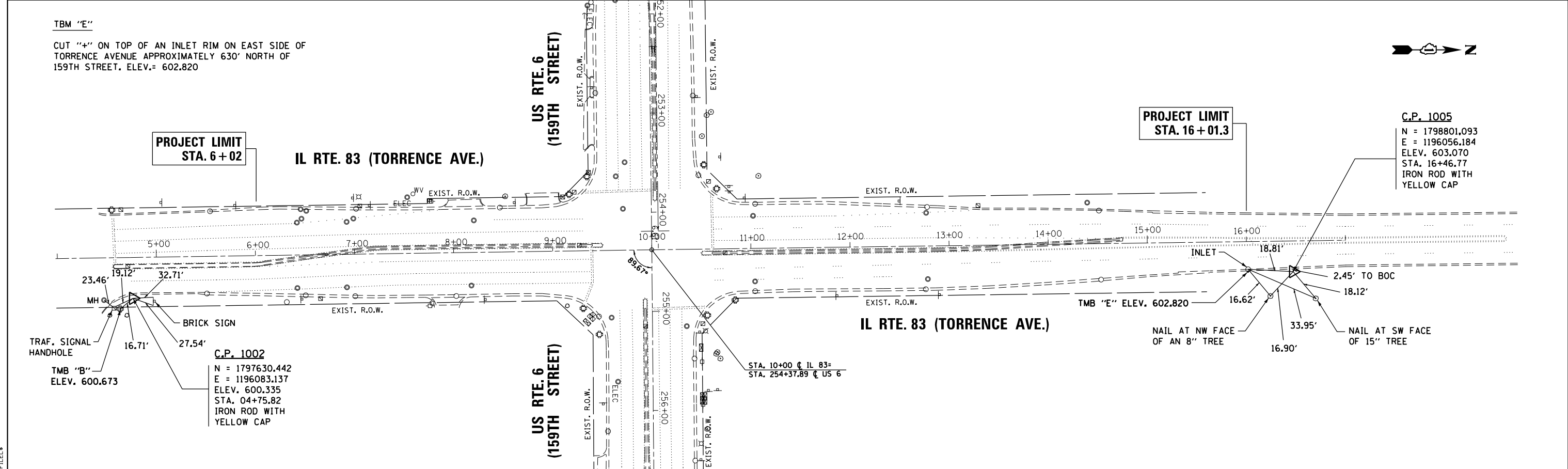
CUT "+ " AT NW CORNER OF AN ELECTRIC HANDHOLE RIM AT THE SE INTERSECTION OF 159TH STREET AND MALL ENTRANCE DRIVE (FIRST ENTRANCE DRIVE EAST OF TORRENCE AVENUE). ELEV.=600.967

TBM "D"

CUT "+ " AT NORTHEASTERLY BOLT OF A FIRE HYDRANT ON SOUTH SIDE OF 159TH STREET, APPROXIMATELY 480' WEST OF TORRENCE AVENUE. ELEV.=601.011

TBM "E"

CUT "+ " ON TOP OF AN INLET RIM ON EAST SIDE OF TORRENCE AVENUE APPROXIMATELY 630' NORTH OF 159TH STREET. ELEV.= 602.820



PROJECT LIMIT  
STA. 6+02

PROJECT LIMIT  
STA. 16+01.3

TBM "B"  
ELEV. 600.673

C.P. 1002  
N = 1797630.442  
E = 1196083.137  
ELEV. 600.335  
STA. 04+75.82  
IRON ROD WITH  
YELLOW CAP

C.P. 1005  
N = 1798801.093  
E = 1196056.184  
ELEV. 603.070  
STA. 16+46.77  
IRON ROD WITH  
YELLOW CAP

STATE OF ILLINOIS  
DEPARTMENT OF TRANSPORTATION

ALIGNMENT, TIES AND BENCHMARKS  
US RTE. 6 (159TH STREET) AND IL RTE. 83 (TORRENCE AVENUE)

F.A.P. RTE.	SECTION	COUNTY	TOTAL SHEETS	SHEET NO.
351	539N-1	COOK	49	12
CONTRACT NO. 60W90				
ILLINOIS FED. AID PROJECT				

FILE NAME = \$FILEL\$

SHT.PLAN

USER NAME = \$USER\$	DESIGNED - BFH	REVISED -
PLOT SCALE = \$SCALE\$	DRAWN - BFH	REVISED -
PLOT DATE = \$DATE\$	CHECKED - BA	REVISED -
	DATE - 1/31/14	REVISED -

SCALE: SHEET 1 OF 1 SHEETS STA. TO STA.