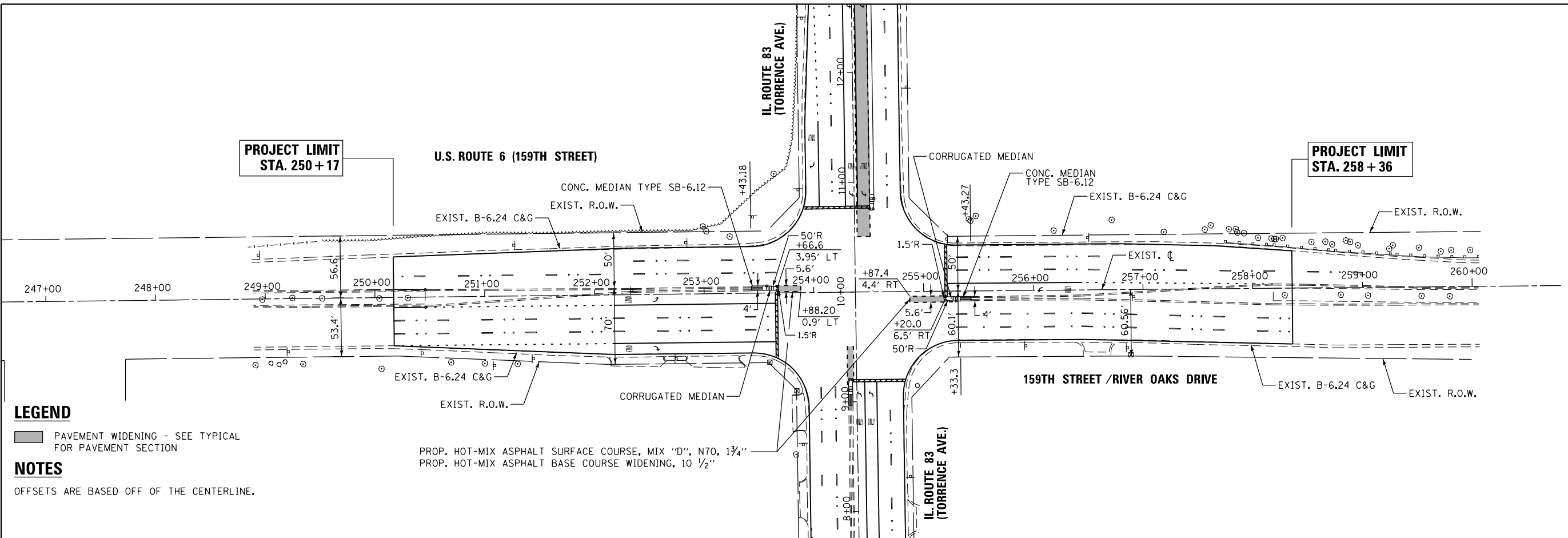




PLAN	SURVEYED	DATE
	PLOTTED	BY
	ALIGNED	
	CHECKED	
	FILED	
	NO.	

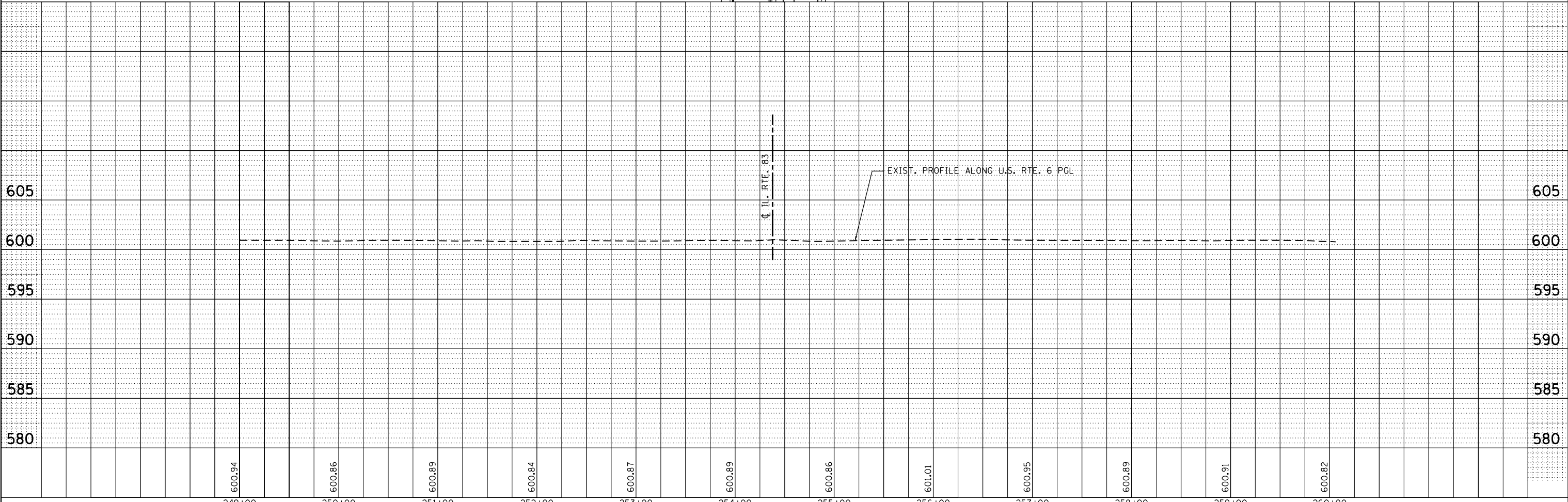
PROFILE	SURVEYED	DATE
	PLOTTED	BY
	GRADES	
	CHECKED	
	STRUCTURE	
	NOTATIONS	
	CHFD	
	NO.	



LEGEND
 [Symbol] PAVEMENT WIDENING - SEE TYPICAL FOR PAVEMENT SECTION

NOTES
 OFFSETS ARE BASED OFF OF THE CENTERLINE.

PROP. HOT-MIX ASPHALT SURFACE COURSE, MIX "D", N70, 1 3/4"
 PROP. HOT-MIX ASPHALT BASE COURSE WIDENING, 10 1/2"



FILE NAME =	USER NAME = *USER*	DESIGNED - BFH	REVISED -	STATE OF ILLINOIS DEPARTMENT OF TRANSPORTATION	ROADWAY PLAN AND PROFILE - US RTE. 6 US RTE. 6 (159TH STREET) AND IL RTE. 83 (TORRENCE AVENUE)				F.A.P. RTE. 351	SECTION 539N-1	COUNTY COOK	TOTAL SHEETS 49	SHEET NO. 14
FILEL	PLOT SCALE = *SCALE*	DRAWN - BFH	REVISED -		SCALE: 1"=50'	SHEET 1	OF 1	SHEETS	STA.	TO STA.	CONTRACT NO. 60W90		
MODELNAME	PLOT DATE = *DATE*	CHECKED - BA	REVISED -		ILLINOIS FED. AID PROJECT								
		DATE - 1/31/14	REVISED -										