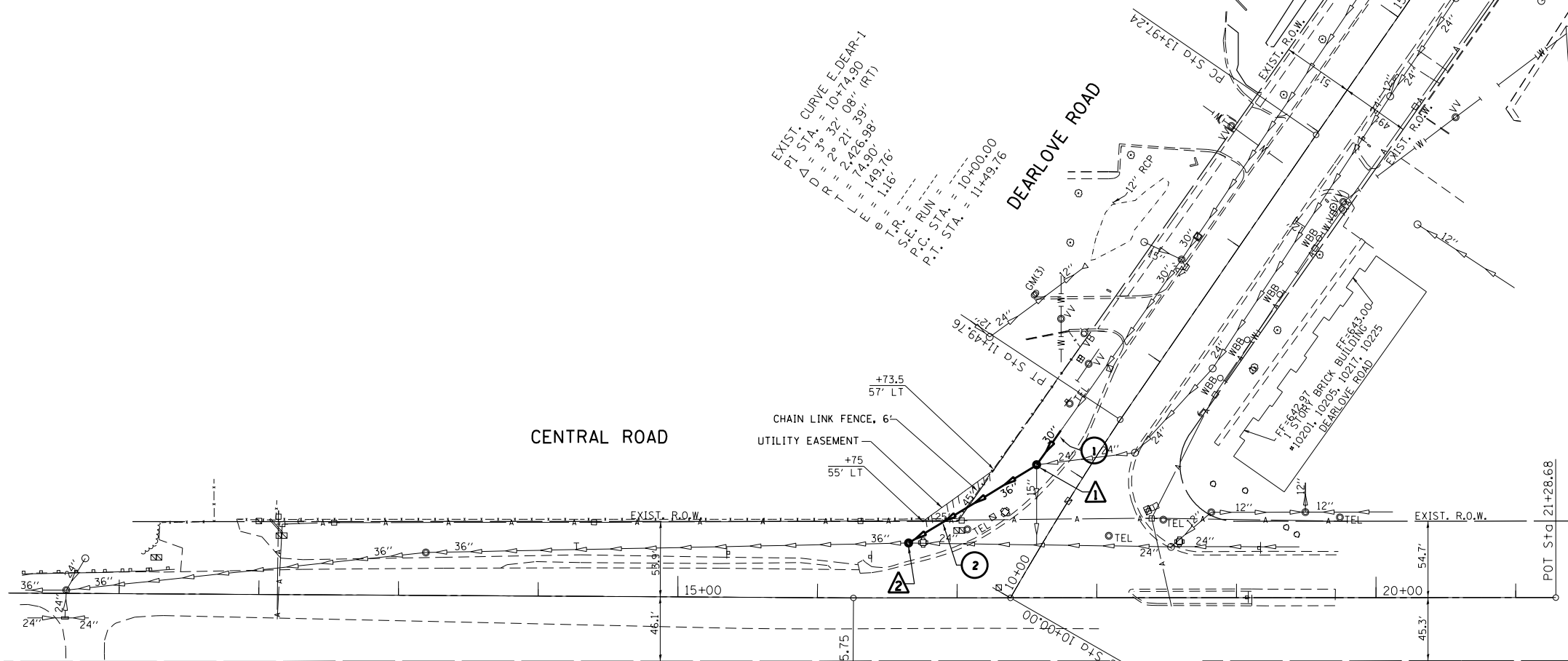


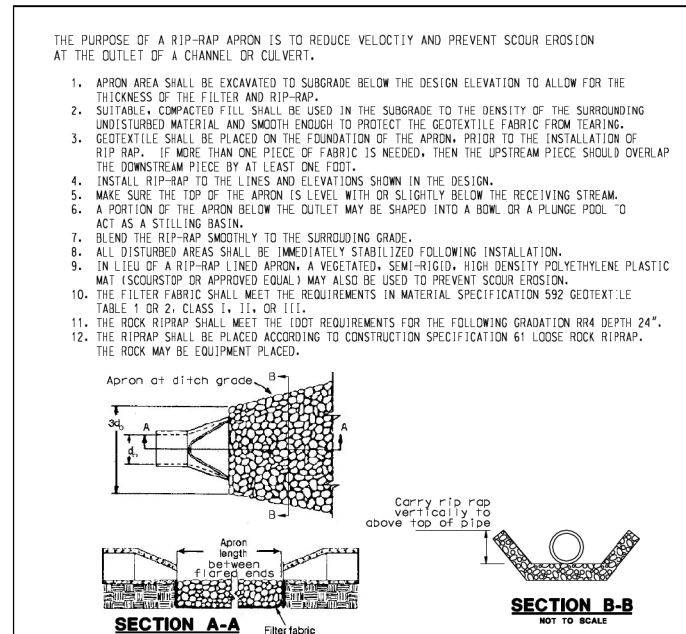
EXIST. CURVE E-DEAR-2
 P.I. STA. = 18+75.28
 $\Delta D = 0^\circ 45' 10''$ (RT)
 $R = 72.772 \cdot 43'$
 $L = 478.04'$
 $E = 956.06'$
 $T.P. = 157'$



EXIST. CURVE E-DEAR-1
 P.I. STA. = 10+74.90
 $\Delta D = 3^\circ 32' 08''$ (RT)
 $R = 2426.98'$
 $L = 74.90'$
 $E = 149.76'$
 $T.P. = 116'$



- 1 PROPOSED 30" STORM SEWER CL. TY-2, 30 FT
- 2 PROPOSED 36" STORM SEWER CL. TY-2, 105 FT
- ▲ PROPOSED MANHOLE TYPE A, 6' DIA. (EXISTING FRAME & LID TO BE REUSED) RIM 641.40 (SEE PROFILE FOR INVERTS)
- ▲ PROPOSED MANHOLE TYPE A, 6' DIA. (EXISTING FRAME & LID TO BE REUSED) RIM 640.33 (SEE PROFILE FOR INVERTS)



DETAIL A

FILE NAME =	USER NAME = abebawa	DESIGNED -	REVISED -	STATE OF ILLINOIS DEPARTMENT OF TRANSPORTATION	PROPOSED DRAINAGE AND UTILITY PLAN CENTRAL RD. AT DEARLOVE RD.	F.A.U. R.T.E.	SECTION	COUNTY	TOTAL SHEETS	SHEET NO.	
Default	13-shit-plan.dgn	DRAWN -	REVISED -			1300	1922-T	COOK	9	6	
	PLOT SCALE = 100.0000' / in.	CHECKED -	REVISED -			CONTRACT NO. 60W95					
	PLOT DATE = 2/10/2014	DATE -	REVISED -			ILLINOIS FED. AID PROJECT					