

STATE OF ILLINOIS
DEPARTMENT OF TRANSPORTATION
DIVISION OF HIGHWAYS

F.A.U. RTE.	SECTION	COUNTY	TOTAL SHEETS	SHEET NO.
1300	1922-T	COOK	9	1
ILLINOIS CONTRACT NO. 60W95				

FOR INDEX OF SHEETS, SEE SHEET NO. 2

THE IMPROVEMENT IS LOCATED IN THE VILLAGE OF GLENVIEW

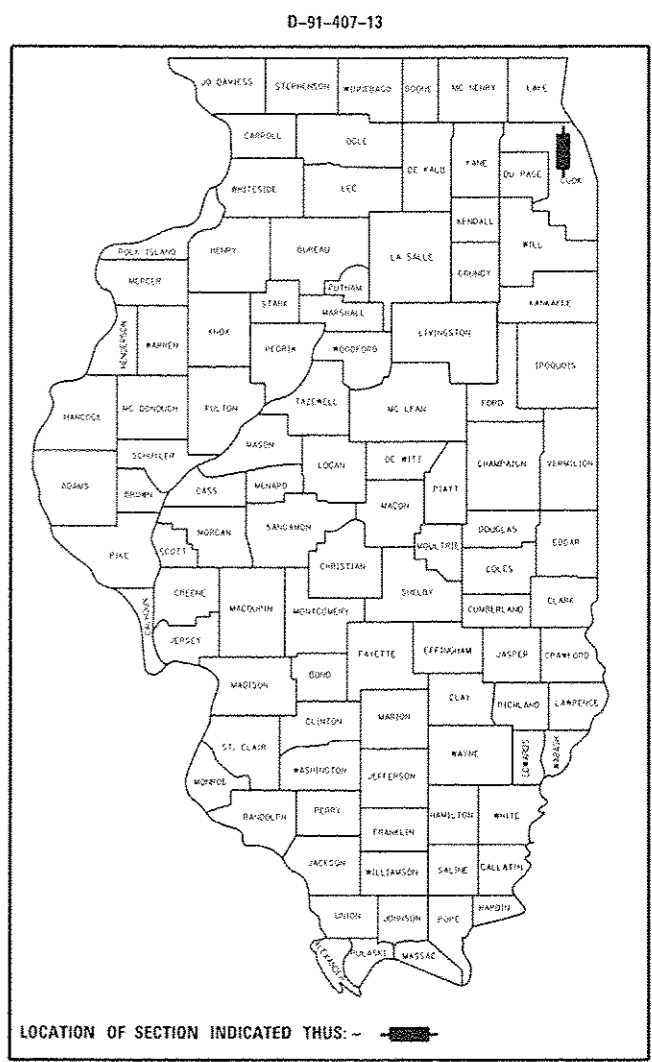
**PROPOSED
HIGHWAY PLANS**

F.A.U. ROUTE 1300: CENTRAL RD.
AT DEARLOVE RD.
SECTION: 1922-T
DRAINAGE IMPROVEMENT
COOK COUNTY

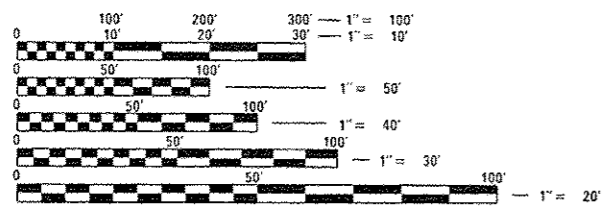
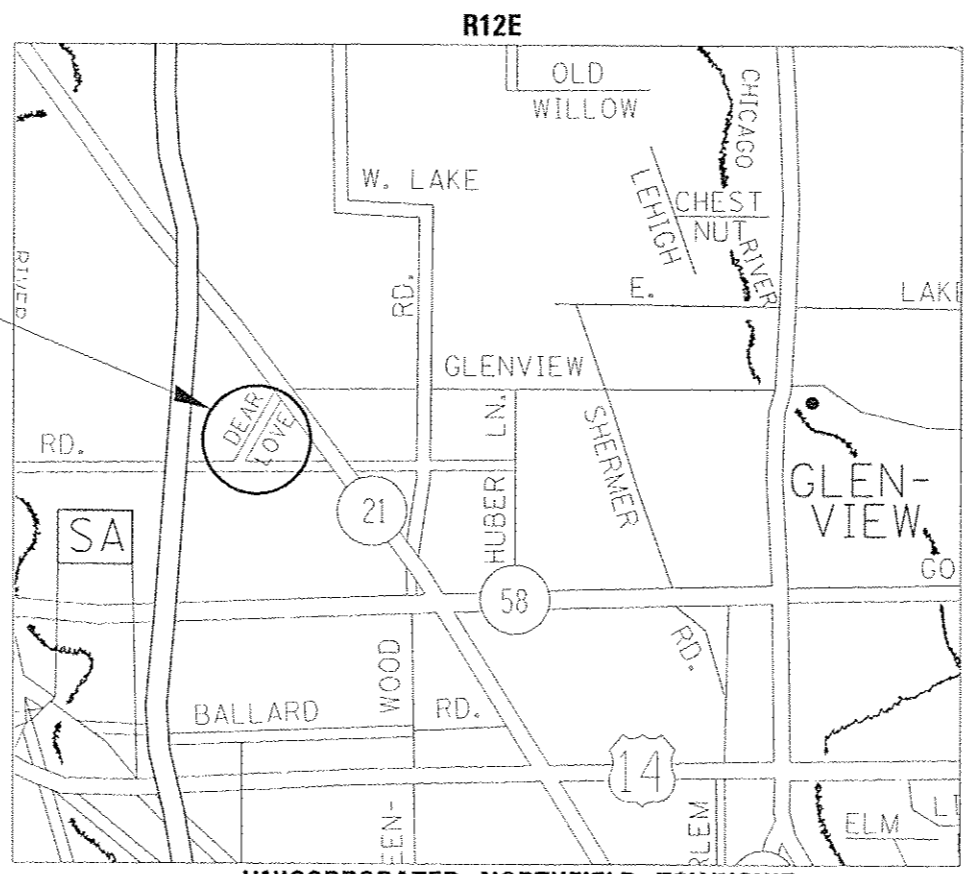
C-91-407-13

TRAFFIC DATA

CENTRAL RD: SPEED LIMIT = 35 MPH
2010 ADT = 13,200
DEARLOVE RD: SPEED LIMIT = 40 MPH
2010 ADT = 9,500



IMPROVEMENT LOCATION



FULL SIZE PLANS HAVE BEEN PREPARED USING STANDARD ENGINEERING SCALES. REDUCED SIZED PLANS WILL NOT CONFORM TO STANDARD SCALES. IN MAKING MEASUREMENTS ON REDUCED PLANS, THE ABOVE SCALES MAY BE USED.

J.U.L.I.E.
JOINT UTILITY LOCATION INFORMATION FOR EXCAVATION
1-800-892-0123
OR 811

PROJECT ENGINEER: ALAIN MIDY (847) 221-3056
PROJECT MANAGER: ISSAM RAYYAN (847) 705-4178

CONTRACT NO. 60W95

UNINCORPORATED NORTHFIELD TOWNSHIP

GROSS LENGTH = 920.00 FT. = 0.174 MILE
NET LENGTH = 185.00 FT. = 0.035 MILE

STATE OF ILLINOIS
DEPARTMENT OF TRANSPORTATION
DIVISION OF HIGHWAYS

SUBMITTED 1/29 2014

John D. Baranzelli, P.E.
DEPUTY DIRECTOR OF HIGHWAYS, REGION ENGINEER

March 21 2014
John D. Baranzelli, P.E.
ENGINEER OF DESIGN AND ENVIRONMENT

March 21 2014
Omer Goman, P.E.
DIRECTOR OF HIGHWAYS, CHIEF ENGINEER

PRINTED BY THE AUTHORITY
OF THE STATE OF ILLINOIS