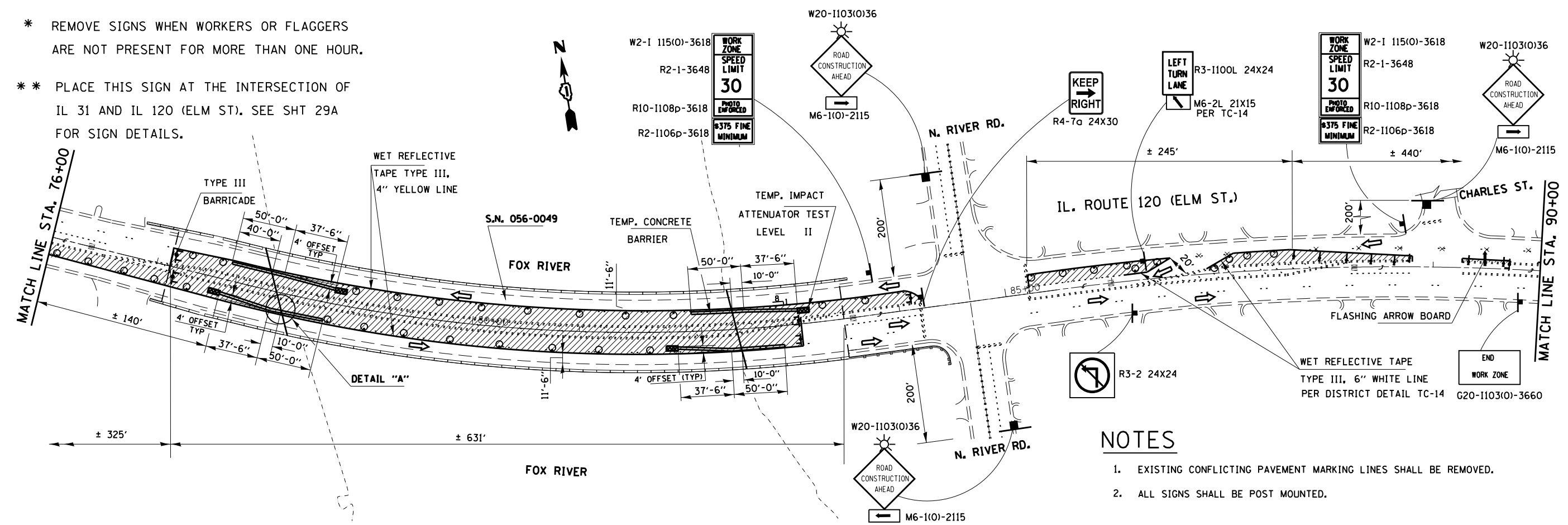


- \* REMOVE SIGNS WHEN WORKERS OR FLAGGERS ARE NOT PRESENT FOR MORE THAN ONE HOUR.
- \*\* PLACE THIS SIGN AT THE INTERSECTION OF IL 31 AND IL 120 (ELM ST). SEE SHT 29A FOR SIGN DETAILS.



**NOTES**

1. EXISTING CONFLICTING PAVEMENT MARKING LINES SHALL BE REMOVED.
2. ALL SIGNS SHALL BE POST MOUNTED.

FILE NAME =	USER NAME = Gorengautab	DESIGNED -	REVISED -	<b>STATE OF ILLINOIS DEPARTMENT OF TRANSPORTATION</b>	<b>IL. ROUTE 120 (ELM STREET) OVER FOX RIVER TRAFFIC CONTROL PLAN STAGE I (S.N.056-0049)</b>	F.A.P. RTE.	SECTION	COUNTY	TOTAL SHEETS	SHEET NO.	
Default	D:\04214-sht-plan.dgn	DRAWN -	REVISED -			333	14X-1-3(13)	MCHENRY	29	15	
	PLOT SCALE = 100.0000' / in.	CHECKED -	REVISED -			<b>CONTRACT NO. 60X22</b>					
	PLOT DATE = 2/19/2014	DATE -	REVISED -			ILLINOIS FED. AID PROJECT					