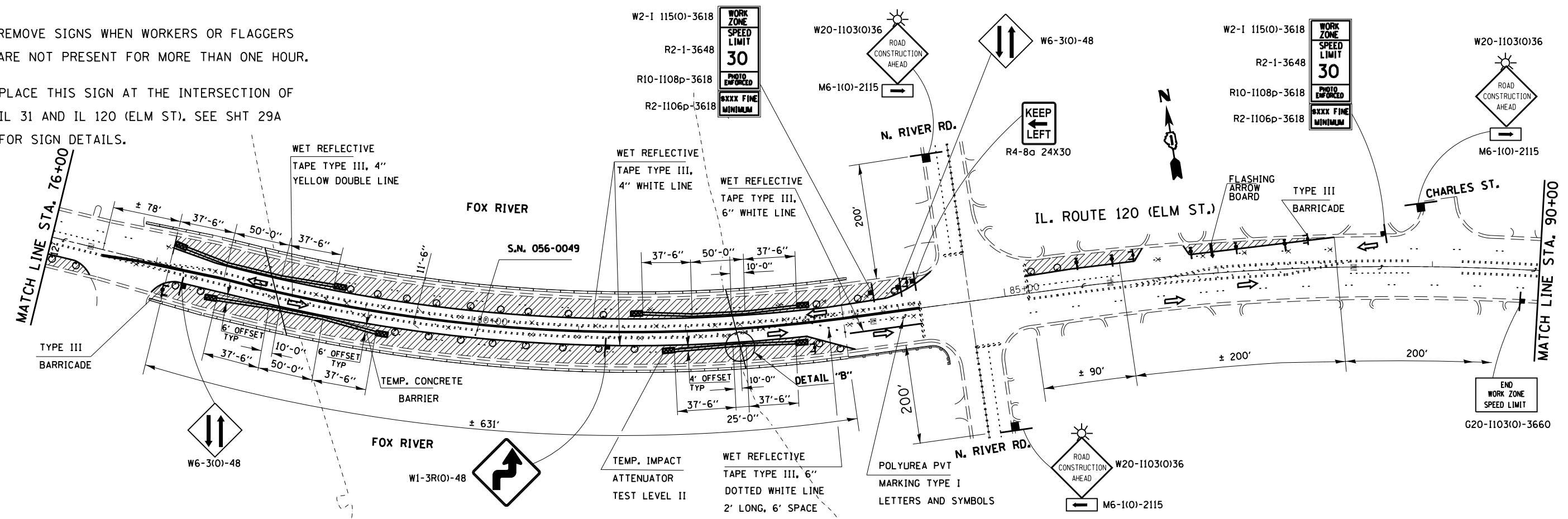


- * REMOVE SIGNS WHEN WORKERS OR FLAGGERS ARE NOT PRESENT FOR MORE THAN ONE HOUR.
- ** PLACE THIS SIGN AT THE INTERSECTION OF IL 31 AND IL 120 (ELM ST). SEE SHT 29A FOR SIGN DETAILS.



FILE NAME =	USER NAME = Gorengautab	DESIGNED -	REVISED -	STATE OF ILLINOIS DEPARTMENT OF TRANSPORTATION	IL. ROUTE 120 (ELM STREET) OVER FOX RIVER TRAFFIC CONTROL PLAN STAGE II (S.N.056-0049)	F.A.P. RTE.	SECTION	COUNTY	TOTAL SHEETS	SHEET NO.
ct:\pw_work\p\dot\gorengautab\d0360667\	D104214-sht-plan.dgn	DRAWN -	REVISED -			333	14X-1-3(13)	MCHENRY	29	17
PLOT SCALE = 100.0000' / in.	CHECKED -	REVISED -	CONTRACT NO. 60X22							
Default	DATE -	REVISED -	ILLINOIS FED. AID PROJECT							