

F.A.U. RTE.	SECTION	COUNTY	TOTAL SHEETS	SHEET NO.
VAR	2013-053TS	COOK	88	1
ILLINOIS			CONTRACT NO. 60X28	

*88-4=84

D-91-051-14

INDEX OF SHEETS

SEE SHEET NO. 2

IDOT STANDARDS

- 000001-06 STANDARD SYMBOLS, ABBREVIATIONS AND PATTERNS
- 701006-05 OFF-ROAD OPERATIONS, 2L, 2W, 15' TO 24" FROM PAVEMENT EDGE
- 701101-04 OFF-ROAD OPERATIONS, MULTILANE, 15' TO 24" FROM PAVEMENT EDGE
- 701701-09 URBAN LANE CLOSURE, MULTILANE INTERSECTION
- 701901-03 TRAFFIC CONTROL DEVICES
- 720001-01 SIGN PANEL MOUNTING DETAILS
- 857001-01 STANDARD PHASE DESIGNATION DIAGRAMS AND PHASE SEQUENCES
- 862001-01 UNINTERRUPTABLE POWER SUPPLY (UPS)
- 880006-01 TRAFFIC SIGNAL MOUNTING DETAILS

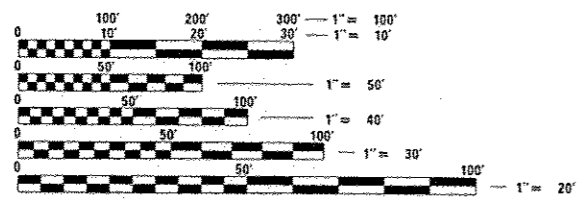
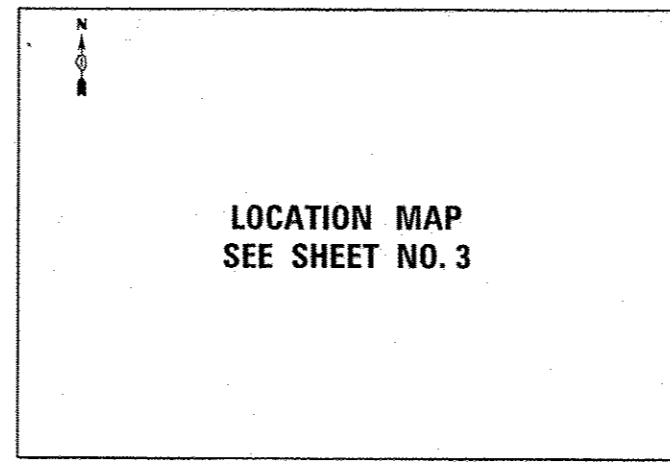
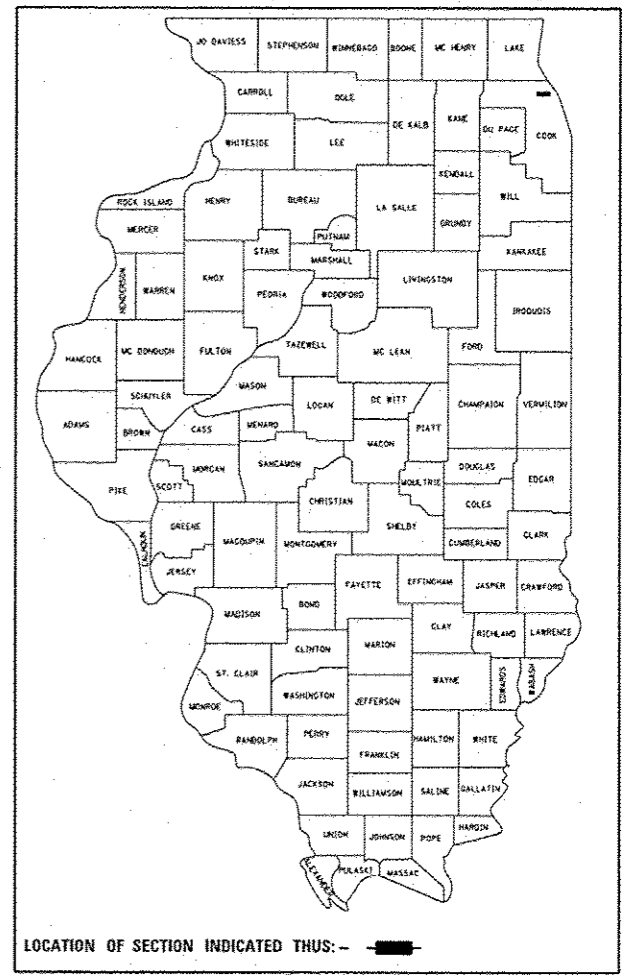
STATE OF ILLINOIS
DEPARTMENT OF TRANSPORTATION
DIVISION OF HIGHWAYS

**PROPOSED
HIGHWAY PLANS**

VARIOUS LOCATIONS IN
NORTH COOK COUNTY #6
LIGHT EMITTING DIODE (LED) INSTALLATION

SECTION 2013-053TS
COOK COUNTY

C-91-051-14



FULL SIZE PLANS HAVE BEEN PREPARED USING STANDARD ENGINEERING SCALES. REDUCED SIZED PLANS WILL NOT CONFORM TO STANDARD SCALES. IN MAKING MEASUREMENTS ON REDUCED PLANS, THE ABOVE SCALES MAY BE USED.

J.U.L.I.E.
JOINT UTILITY LOCATION INFORMATION FOR EXCAVATION
1-800-892-0123
OR 811

PROJECT ENGINEER: SHAR-DAY SMITH
PROJECT MANAGER: SUDUD MAHMOUD

CONTRACT NO. 60X28



Signed *Jeffrey A. Meindl*
JEFFREY A. MEINDL, P.E., IL License No. 062-054021
Expires 11/30/2015
Date 12-09-13

STATE OF ILLINOIS
DEPARTMENT OF TRANSPORTATION
DIVISION OF HIGHWAYS

SUBMITTED Dec. 20 2013
John J. [Signature]
DEPUTY DIRECTOR OF HIGHWAYS, REGION ENGINEER

Jan 24 2014
John D. Baranzelli P.E./E
ENGINEER OF DESIGN AND ENVIRONMENT

Jan 24 2014
Omer Osman P.E./E
DIRECTOR OF HIGHWAYS, CHIEF ENGINEER



PRINTED BY THE AUTHORITY
OF THE STATE OF ILLINOIS