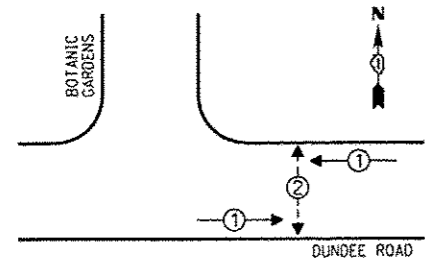


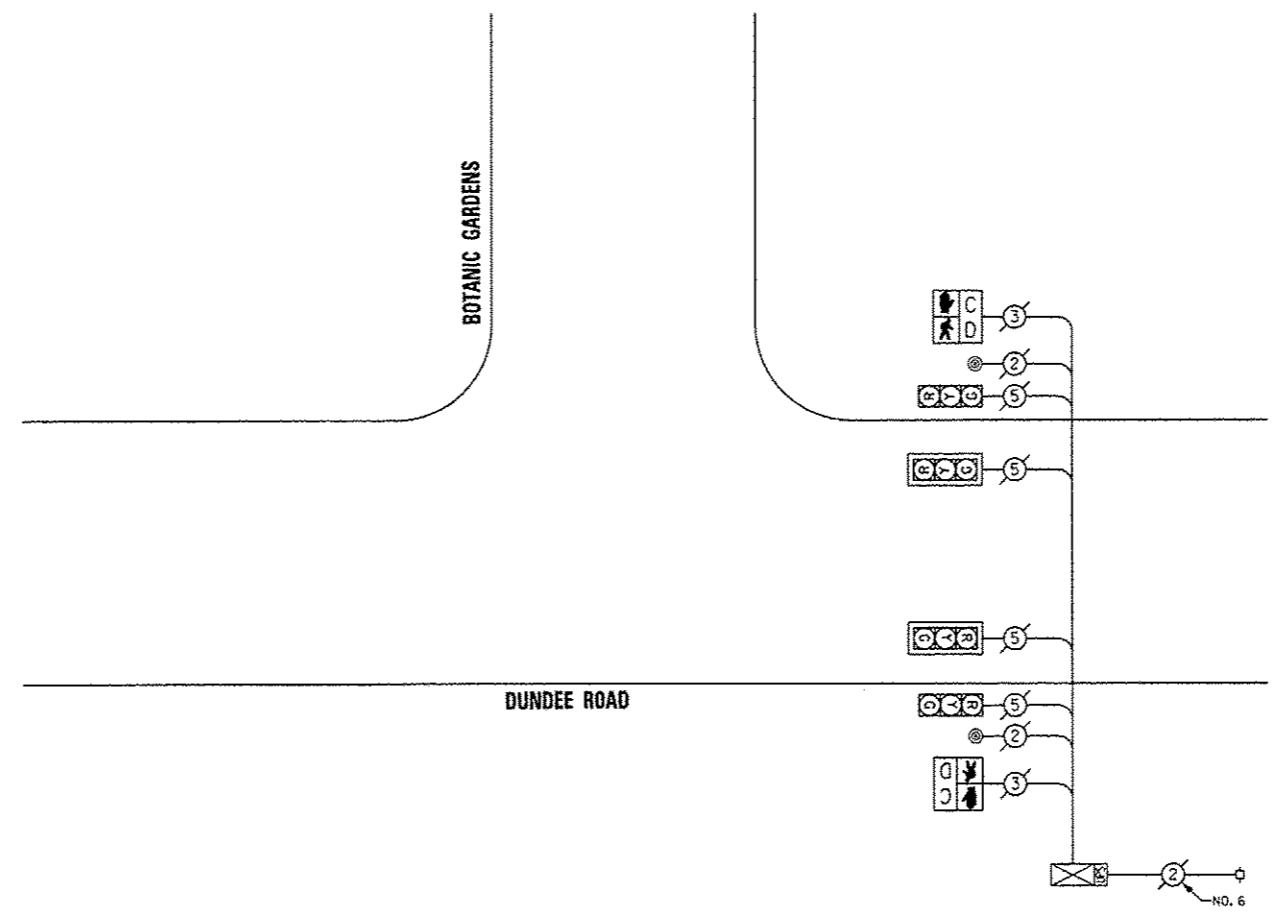


CONTROLLER SEQUENCE



- LEGEND**
- |— SINGLE ENTRY PHASE
  - |— DUAL ENTRY PHASE
  - |— OVERLAP
  - |— PEDESTRIAN PHASE
  - \* NUMBER REFERS TO ASSOCIATED PHASE

PHASE DESIGNATION DIAGRAM



CABLE PLAN

I.D.O.T. TRAFFIC SIGNAL INSTALLATION ELECTRICAL SERVICE REQUIREMENTS					TOTAL WATTAGE
TYPE	NO. OF LAMPS	WATTAGE (INCAND)	LED % OPERATIONS		
SIGNAL (RED)	4	17	0.50	34.00	
(YELLOW)	4	25	0.25	25.00	
(GREEN)	4	15	0.25	15.00	
ARROW		12	0.10		
PED. SIGNAL	2	25	1.00	50.00	
CONTROLLER	1	100	1.00	100.00	
ILLUM. SIGN LUMINAIRE		250	0.50		
VIDEO SYSTEM		150	1.00		
FLASHER			0.50		
ENERGY COSTS TO:				TOTAL =	224.00

VILLAGE OF GLENCOE  
675 VILLAGE COURT  
GLENCOE, ILLINOIS 60022

ENERGY SUPPLY - CONTACT: TERRI BLECK  
PHONE: (847) 816-5239  
COMPANY: ConEd

**REMOVE EXISTING TRAFFIC SIGNAL EQUIPMENT**

THE FOLLOWING ITEMS SHALL BE REMOVED BY THE CONTRACTOR AND SHALL BE DISPOSED OF BY THEM OUTSIDE THE RIGHT-OF-WAY AT THEIR EXPENSE. THE SALVAGE VALUE OF THE REMOVED EQUIPMENT SHALL BE REFLECTED IN THE CONTRACT BID PRICE.

QUAN.	UNIT	DESCRIPTION
2	EACH	PEDESTRIAN SIGNAL HEAD, 1-FACE
2	EACH	PEDESTRIAN PUSHBUTTON

SCHEDULE OF QUANTITIES

QUAN.	UNIT	ITEM
1	EACH	MAINTENANCE OF EXISTING TRAFFIC SIGNAL INSTALLATION
2	EACH	PEDESTRIAN SIGNAL HEAD, LED, 1-FACE, BRACKET MOUNTED WITH COUNTDOWN TIMER
2	EACH	PEDESTRIAN PUSH-BUTTON
1	EACH	MODIFY EXISTING CONTROLLER CABINET
1	EACH	REMOVE EXISTING TRAFFIC SIGNAL EQUIPMENT
1	EACH	UNINTERRUPTIBLE POWER SUPPLY, SPECIAL

**SAM SCHWARTZ  
ENGINEERING**  
3100 W. HIGGINS, STE. 100, HOFFMAN ESTATES, IL 60169

DESIGNED -	JAM	REVISED -	
DRAWN -	JAM	REVISED -	
CHECKED -	LMM	REVISED -	
DATE -	12-13-13	REVISED -	

**STATE OF ILLINOIS  
DEPARTMENT OF TRANSPORTATION**

**SCHEDULE OF QUANTITIES, CABLE PLAN, PHASE DESIGNATION  
DIAGRAM, AND EMERGENCY VEHICLE PREEMPTION SEQUENCE,  
DUNDEE ROAD AT BOTANIC GARDENS PATH**

SCALE: NONE SHEET OF SHEETS STA. TO STA.

F.A. RTE.	SECTION	COUNTY	TOTAL SHEETS	SHEET NO.
VAR	2013-053TS	COOK	88	30
ILLINOIS FED. AID PROJECT			CONTRACT NO. 60X28	