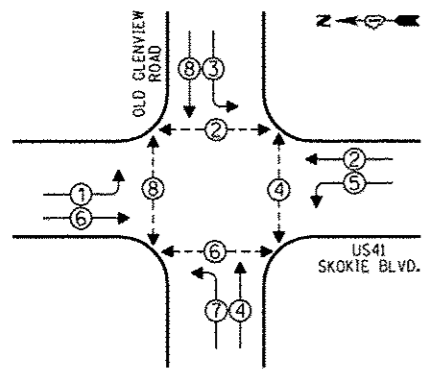


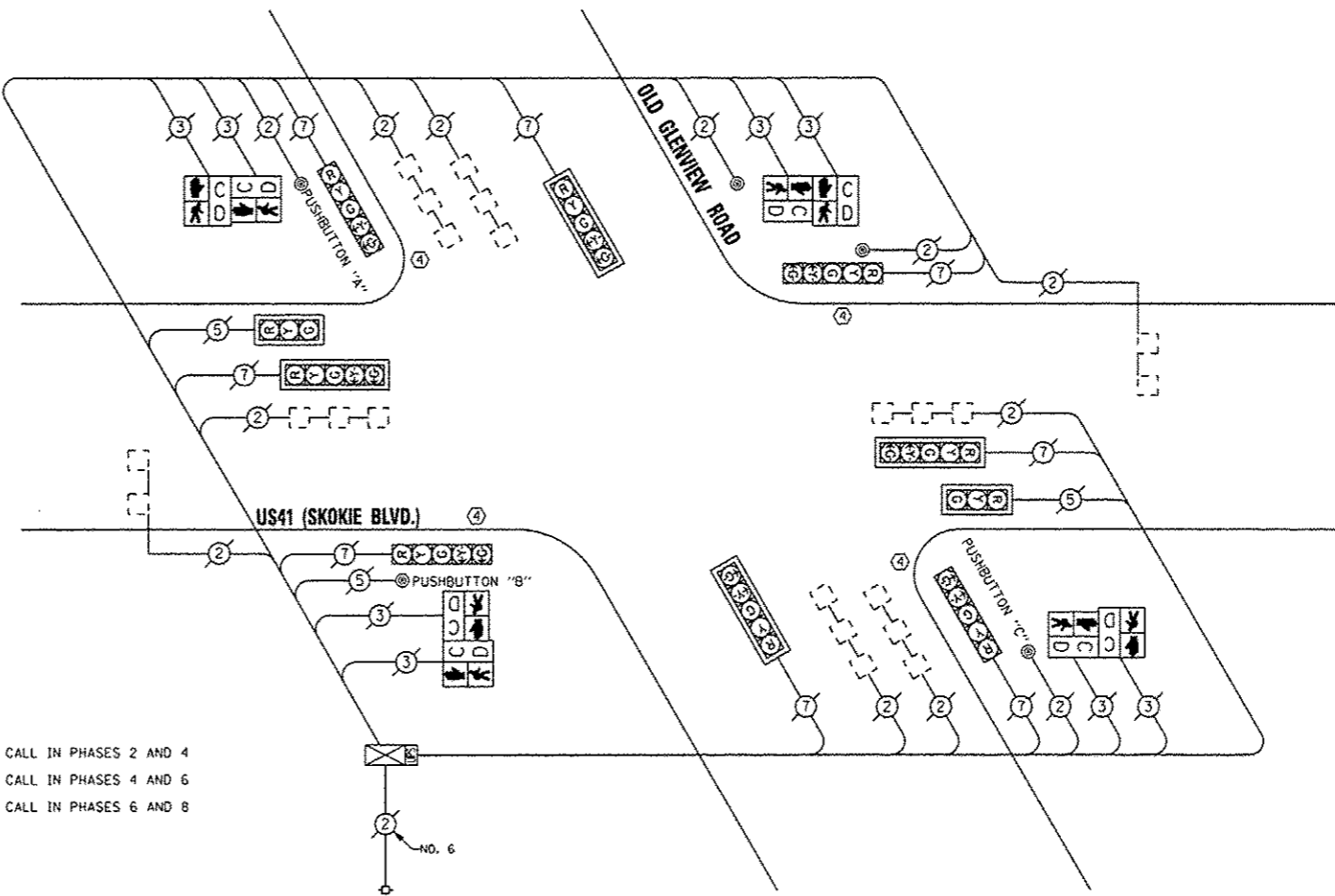
CONTROLLER SEQUENCE



PHASE DESIGNATION DIAGRAM

- LEGEND**
- SINGLE ENTRY PHASE
 - DUAL ENTRY PHASE
 - OVERLAP
 - PEDESTRIAN PHASE
 - * NUMBER REFERS TO ASSOCIATED PHASE

④ REPLACE 16 FT. PAINTED POST, RE-USE EXISTING TYPE A CONCRETE FOUNDATION.



CABLE PLAN

NOTE:
 PUSHBUTTON "A" SHALL PLACE A CALL IN PHASES 2 AND 4
 PUSHBUTTON "B" SHALL PLACE A CALL IN PHASES 4 AND 6
 PUSHBUTTON "C" SHALL PLACE A CALL IN PHASES 6 AND 8

REPLACE ALL EXISTING TRAFFIC SIGNAL HEADS

THE TRAFFIC SIGNAL CONTROL EQUIPMENT FOR THIS PROJECT SHALL BE "ECONOLITE".

| I.O.O.T. TRAFFIC SIGNAL INSTALLATION ELECTRICAL SERVICE REQUIREMENTS | | | | | TOTAL WATTAGE |
|--|--------------|---------|------------------|---------|---------------|
| TYPE | NO. OF LAMPS | INCAND. | LED % OPERATIONS | WATTAGE | |
| SIGNAL (RED) | 10 | | 17 | 0.50 | 85.00 |
| (YELLOW) | 10 | | 25 | 0.25 | 62.50 |
| (GREEN) | 10 | | 15 | 0.25 | 37.50 |
| ARROW | 16 | | 12 | 0.10 | 19.20 |
| PED. SIGNAL | 8 | | 25 | 1.00 | 200.00 |
| CONTROLLER | 1 | | 100 | 1.00 | 100.00 |
| ILLUM. SIGN | | | 25 | 0.05 | |
| LUMINAIRE | | 250 | | 0.50 | |
| VIDEO SYSTEM | | 150 | | 1.00 | |
| FLASHER | | | | 0.50 | |
| ENERGY COSTS TO: | | | | TOTAL = | 504.20 |

VILLAGE OF WILMETTE
 1200 WILMETTE AVENUE
 WILMETTE, ILLINOIS 60091

ENERGY SUPPLY - CONTACT: TERRI BLECK
 PHONE: (847) 816-5239
 COMPANY: ComEd

REMOVE EXISTING TRAFFIC SIGNAL EQUIPMENT

THE FOLLOWING ITEMS SHALL BE REMOVED BY THE CONTRACTOR AND SHALL BE DISPOSED OF BY THEM OUTSIDE THE RIGHT-OF-WAY AT THEIR EXPENSE. THE SALVAGE VALUE OF THE REMOVED EQUIPMENT SHALL BE REFLECTED IN THE CONTRACT BID PRICE.

| QUAN. | UNIT | DESCRIPTION |
|-------|------|--------------------------------|
| 4 | EACH | TRAFFIC SIGNAL POST |
| 2 | EACH | SIGNAL HEAD, 1-FACE, 3-SECTION |
| 8 | EACH | SIGNAL HEAD, 1-FACE, 5-SECTION |
| 4 | EACH | PEDESTRIAN SIGNAL HEAD, 2-FACE |
| 6 | EACH | TRAFFIC SIGNAL BACKPLATE |
| 5 | EACH | PEDESTRIAN PUSHBUTTON |

SCHEDULE OF QUANTITIES

| QUAN. | UNIT | ITEM |
|-------|------|---|
| 1 | EACH | MAINTENANCE OF EXISTING TRAFFIC SIGNAL INSTALLATION |
| 4 | EACH | TRAFFIC SIGNAL POST, GALVANIZED STEEL 16 FT. |
| 2 | EACH | SIGNAL HEAD, LED, 1-FACE, 3-SECTION, MAST ARM MOUNTED |
| 4 | EACH | SIGNAL HEAD, LED, 1-FACE, 5-SECTION, BRACKET MOUNTED |
| 4 | EACH | SIGNAL HEAD, LED, 1-FACE, 5-SECTION, MAST ARM MOUNTED |
| 4 | EACH | PEDESTRIAN SIGNAL HEAD, LED, 2-FACE, BRACKET MOUNTED WITH COUNTDOWN TIMER |
| 6 | EACH | TRAFFIC SIGNAL BACKPLATE, LOUVERED, ALUMINUM |
| 1 | EACH | MODIFY EXISTING CONTROLLER CABINET |
| 1 | EACH | REMOVE EXISTING TRAFFIC SIGNAL EQUIPMENT |
| 1 | EACH | UNINTERRUPTIBLE POWER SUPPLY, SPECIAL |
| 5 | EACH | PEDESTRIAN PUSH-BUTTON, NON-LATCHING |

SAM SCHWARTZ ENGINEERING
 3100 N. HIGGINS, STE. 100, HOFFMAN ESTATES, IL 60169

| | |
|-----------------|-----------|
| DESIGNED - JAM | REVISED - |
| DRAWN - JAM | REVISED - |
| CHECKED - LMM | REVISED - |
| DATE - 12-13-13 | REVISED - |

STATE OF ILLINOIS
 DEPARTMENT OF TRANSPORTATION

SCHEDULE OF QUANTITIES, CABLE PLAN, PHASE DESIGNATION DIAGRAM, AND EMERGENCY VEHICLE PREEMPTION SEQUENCE, US14 (SKOKIE BOULEVARD) AT OLD GLENVIEW ROAD

SCALE: NONE SHEET OF SHEETS STA. TO STA.

| | | | | |
|---------------------------|------------|--------|--------------------|-----------|
| F.A. RTE. | SECTION | COUNTY | TOTAL SHEETS | SHEET NO. |
| VAR | 2013-053TS | COOK | 88 | 77 |
| | | | CONTRACT NO. 60X28 | |
| ILLINOIS FED. AID PROJECT | | | | |