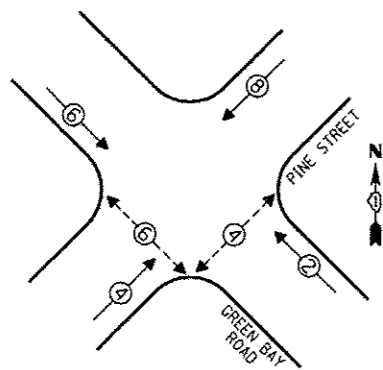




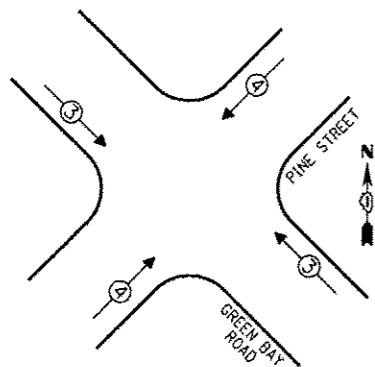
CONTROLLER SEQUENCE



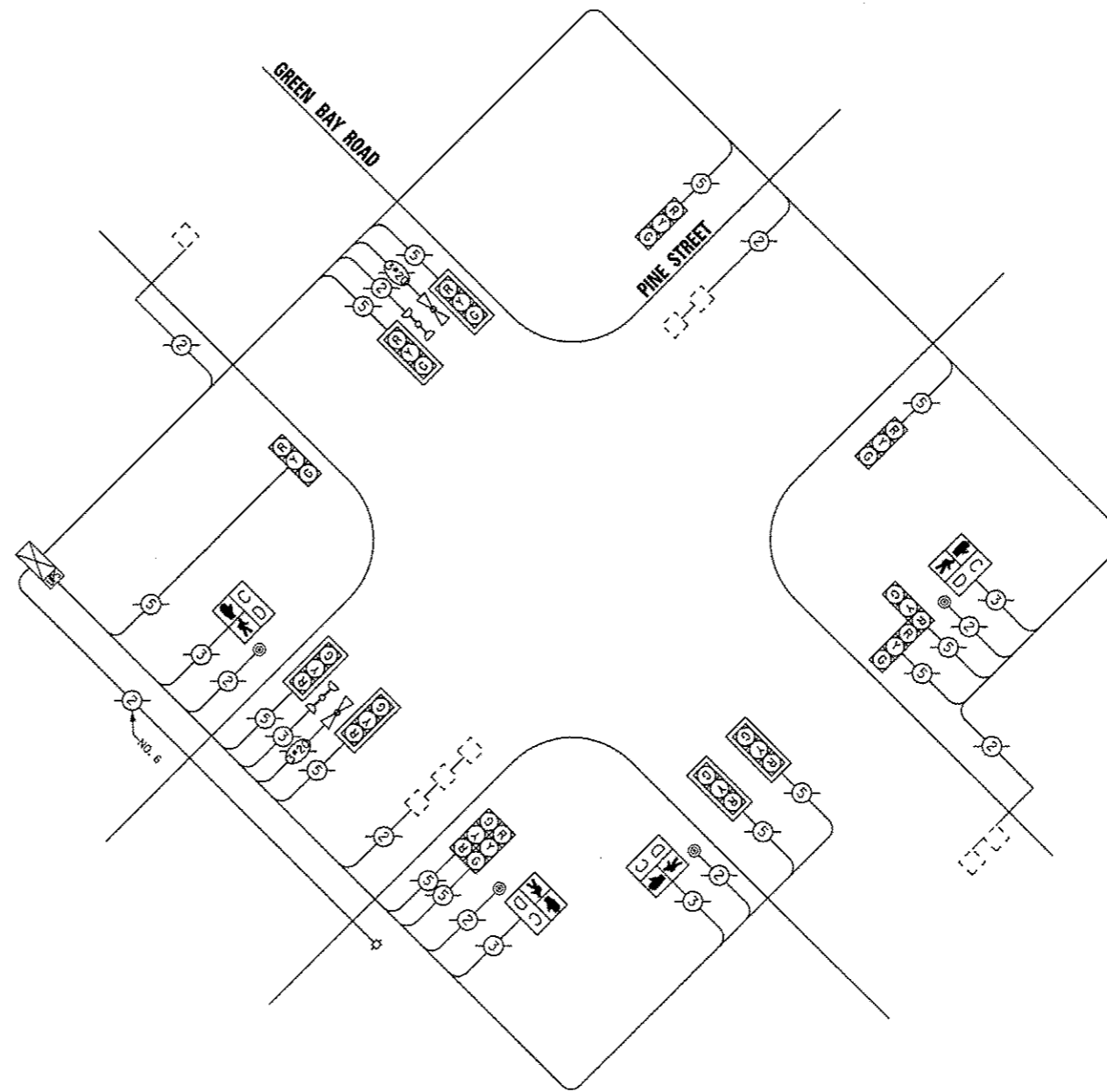
- LEGEND**
- SINGLE ENTRY PHASE
  - DUAL ENTRY PHASE
  - ◇ OVERLAP
  - ⊙ PEDESTRIAN PHASE
  - NUMBER REFERS TO ASSOCIATED PHASE

PHASE DESIGNATION DIAGRAM

EMERGENCY VEHICLE PREEMPTION SEQUENCE



| EMERGENCY VEHICLE PREEMPTORS |   |   |
|------------------------------|---|---|
| EMERGENCY VEHICLE PREEMPTOR  | 3 | 4 |
| MOVEMENT                     | ↔ | ↕ |



CABLE PLAN

THE TRAFFIC SIGNAL CONTROL EQUIPMENT FOR THIS PROJECT SHALL BE "EAGLE".

| I.D.O.T. TRAFFIC SIGNAL INSTALLATION ELECTRICAL SERVICE REQUIREMENTS |              |         |       |            | TOTAL WATTAGE |
|--|--------------|---------|-------|------------|---------------|
| TYPE   | NO. OF LAMPS | INCAND. | LED % | OPERATIONS |               |
| SIGNAL (RED)   | 13           |         | 17    | 0.50       | 110.50        |
| (YELLOW)   | 13           |         | 25    | 0.25       | 81.25         |
| (GREEN)  | 13           |         | 15    | 0.25       | 48.75         |
| ARROW  |              |         | 12    | 0.10       |               |
| PED. SIGNAL  | 4            |         | 25    | 1.00       | 100.00        |
| CONTROLLER   | 1            |         | 100   | 1.00       | 100.00        |
| ILLUM. SIGN  |              |         | 25    | 0.05       |               |
| LUMINAIRE  |              | 250     |       | 0.50       |               |
| VIDEO SYSTEM   |              | 150     |       | 1.00       |               |
| FLASHER  |              |         |       | 0.50       |               |
| ENERGY COSTS TO:   |              |         |       | TOTAL =    | 440.50        |

VILLAGE OF WINNETKA  
510 GREEN BAY ROAD  
WINNETKA, ILLINOIS 60093

ENERGY SUPPLY - CONTACT: TERRI BLECK  
PHONE: (847) 816-5239  
COMPANY: ComEd

REMOVE EXISTING TRAFFIC SIGNAL EQUIPMENT

THE FOLLOWING ITEMS SHALL BE REMOVED BY THE CONTRACTOR AND SHALL BE DISPOSED OF BY THEM OUTSIDE THE RIGHT-OF-WAY AT THEIR EXPENSE. THE SALVAGE VALUE OF THE REMOVED EQUIPMENT SHALL BE REFLECTED IN THE CONTRACT BID PRICE.

| QUAN. | UNIT | DESCRIPTION                    |
|-------|------|--------------------------------|
| 2     | EACH | PEDESTRIAN SIGNAL HEAD, 1-FACE |
| 1     | EACH | PEDESTRIAN SIGNAL HEAD, 2-FACE |
| 4     | EACH | PEDESTRIAN PUSHBUTTON          |

SCHEDULE OF QUANTITIES

| QUAN. | UNIT | ITEM  |
|-------|------|---|
| 1     | EACH | MAINTENANCE OF EXISTING TRAFFIC SIGNAL INSTALLATION                       |
| 4     | EACH | PEDESTRIAN SIGNAL HEAD, LED, 1-FACE, BRACKET MOUNTED WITH COUNTDOWN TIMER |
| 4     | EACH | PEDESTRIAN PUSH-BUTTON  |
| 1     | EACH | MODIFY EXISTING CONTROLLER CABINET  |
| 1     | EACH | REMOVE EXISTING TRAFFIC SIGNAL EQUIPMENT                                  |
| 1     | EACH | UNINTERRUPTIBLE POWER SUPPLY, SPECIAL                                     |

|                 |           |
|-----------------|-----------|
| DESIGNED - JAM  | REVISED - |
| DRAWN - JAM     | REVISED - |
| CHECKED - LMM   | REVISED - |
| DATE - 12-13-13 | REVISED - |

STATE OF ILLINOIS  
DEPARTMENT OF TRANSPORTATION

SCHEDULE OF QUANTITIES, CABLE PLAN, PHASE DESIGNATION  
DIAGRAM, AND EMERGENCY VEHICLE PREEMPTION SEQUENCE,  
GREEN BAY ROAD AT PINE STREET

| F.A. RTE.                 | SECTION    | COUNTY | TOTAL SHEETS       | SHEET NO. |
|---------------------------|------------|--------|--------------------|-----------|
| VAR                       | 2013-0531S | COOK   | 88                 | 82        |
|                           |            |        | CONTRACT NO. 60X28 |           |
| ILLINOIS FED. AID PROJECT |            |        |                    |           |

SCALE: NONE SHEET OF SHEETS STA. TO STA.

**SAMSWARTZ ENGINEERING**  
3100 W. HIGGINS, STE. 100, HOFFMAN ESTATES, IL 60169