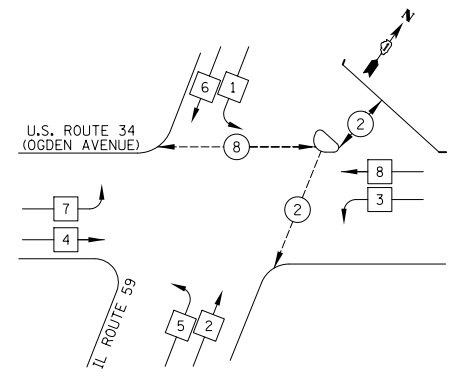
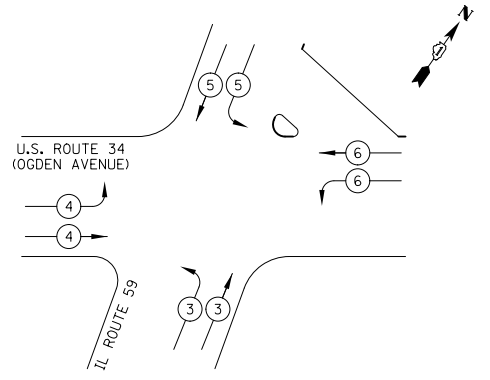


TEMPORARY CONTROLLER SEQUENCE



TEMPORARY EMERGENCY VEHICLE PREEMPTION SEQUENCE

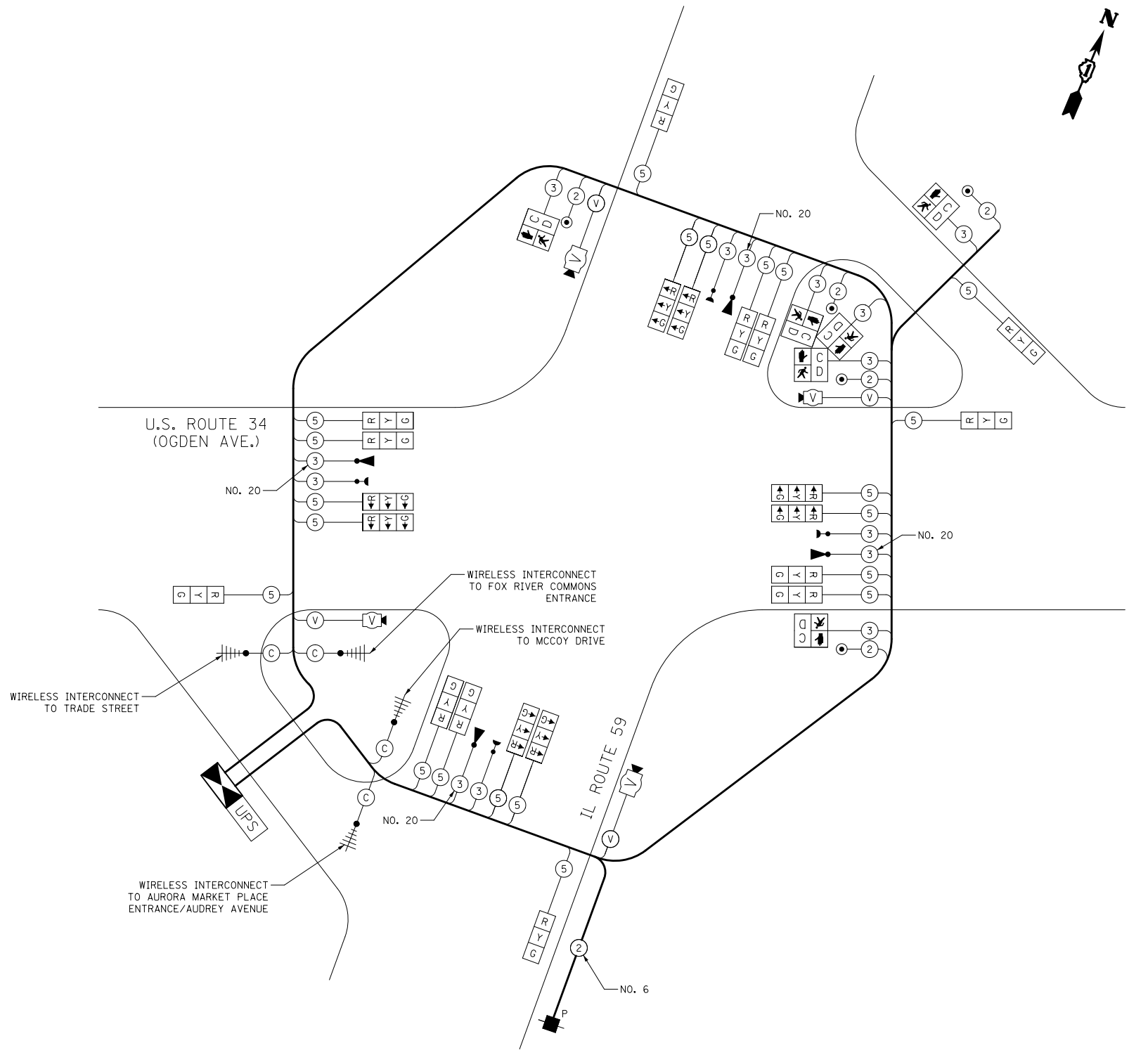


LEGEND

- DUAL ENTRY PHASE
- SINGLE ENTRY PHASE
- OVERLAP
- PEDESTRIAN PHASE
- NUMBER REFERS TO ASSOCIATED PHASE

PHASE DESIGNATION DIAGRAM

EXISTING EMERGENCY VEHICLE PREEMPTORS				
EMERGENCY VEHICLE PREEMPTOR	3	4	5	6
MOVEMENT				



CABLE PLAN
NOT TO SCALE

I.D.O.T. TRAFFIC SIGNAL INSTALLATION ELECTRICAL SERVICE REQUIREMENTS					TOTAL WATTAGE
TYPE	NO. LAMPS	WATTAGE		% OPERATION	
		INCAND.	LED		
SIGNAL (RED)	13		17	0.50	111
(YELLOW)	13		25	0.25	81
(GREEN)	13		15	0.25	49
ARROW	8		12	0.10	10
PED. SIGNAL	6		25	1.00	150
VIDEO SYSTEM	1		150	1.00	150
CONTROLLER	1		100	1.00	100
TOTAL =					651
ENERGY COSTS TO: ILLINOIS DEPARTMENT OF TRANSPORTATION 201 WEST CENTER COURT SCHAUMBURG, IL 60196-1096					
ENERGY SUPPLY: CONTACT: LANE SIBLEY PHONE: 630-723-2397 COMPANY: COM ED					

USER NAME = jrt	DESIGNED - BRD	REVISED -
PLOT SCALE = 40.0000' / in.	DRAWN - MFB	REVISED -
PLOT DATE = 1/30/2014	CHECKED - JJE	REVISED -
	DATE - 01/30/2014	REVISED -

STATE OF ILLINOIS
DEPARTMENT OF TRANSPORTATION

TEMPORARY CABLE PLAN, TEMPORARY SEQUENCE OF OPERATION,
& TEMPORARY EMERGENCY VEHICLE PREEMPTION SEQUENCE
US ROUTE 34 (OGDEN AVENUE) AT IL ROUTE 59

F.A.P. RTE.	SECTION	COUNTY	TOTAL SHEETS	SHEET NO.
311	2013-062TS	DUPAGE	49	23
CONTRACT NO. 60X34				
ILLINOIS FED. AID PROJECT				

TS #6090

