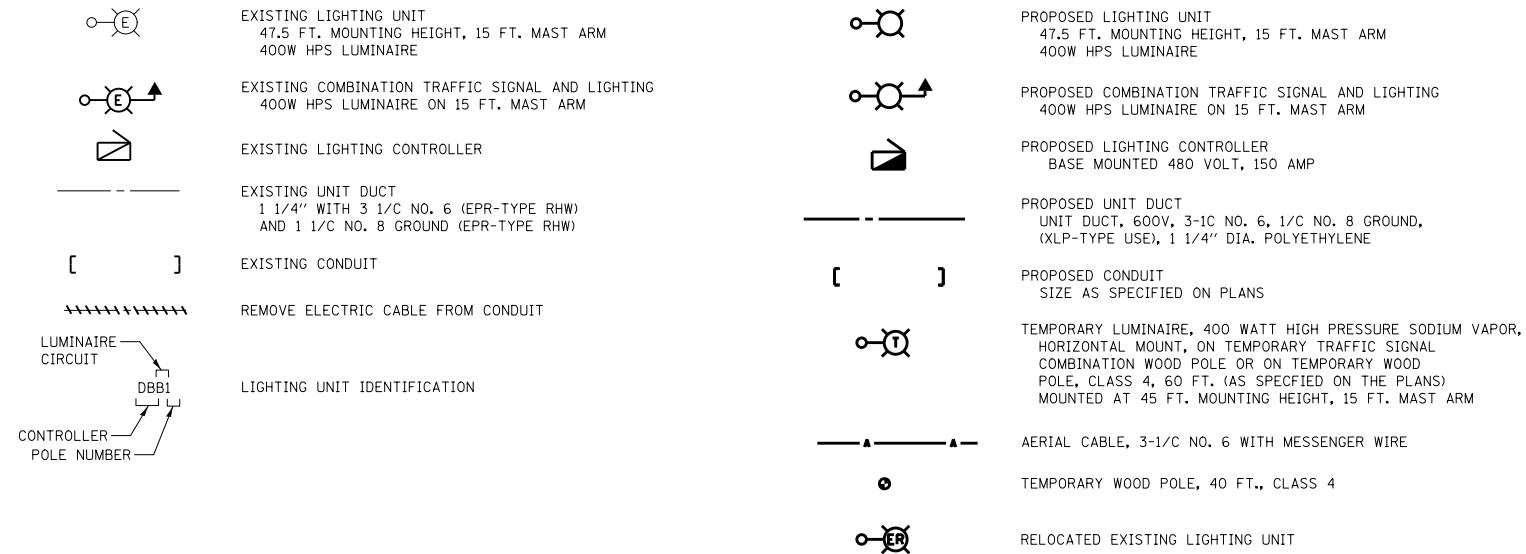


LEGEND



NOTES:

- IT SHALL BE THE CONTRACTOR'S RESPONSIBILITY TO VERIFY ALL DIMENSIONS AND CONDITIONS IN THE FIELD PRIOR TO ORDERING MATERIALS AND BEGINNING CONSTRUCTION.
- PAY ITEMS IN THE SUMMARY OF QUANTITIES HAVE BEEN ESTIMATED. IF, IN THE ENGINEER'S OPINION, ANY WORK IS NOT REQUIRED, THAT ITEM WILL BE DEDUCTED FROM THE CONTRACT AND NO ADDITIONAL COMPENSATION WILL BE ALLOWED.
- IT SHALL BE THE CONTRACTOR'S RESPONSIBILITY TO MARK THE PROPOSED LOCATIONS OF ALL LIGHT POLES FOR EXAMINATION AND CONFIRMATION WITH THE ENGINEER PRIOR TO INSTALLATION OF LIGHTING FOUNDATIONS.
- THE CONTRACTOR SHALL BE RESPONSIBLE FOR THE ESTABLISHMENT OF FINISHED GRADE. THE ENGINEER MAY ASSIST THE CONTRACTOR, AS APPLICABLE, BUT THE RESPONSIBILITY FOR COORDINATING THE FINISHED GRADE ELEVATION WITH THE INSTALLATION OF CONDUITS, UNIT DUCTS AND THE TOP OF THE FOUNDATION HEIGHTS REMAIN WITH THE CONTRACTOR.
- WHEN SPLICING TO EXISTING POLE, ANY AND ALL WORK REQUIRED TO RUN THE PROPOSED UNIT DUCT INTO EXISTING FOUNDATION SLEEVE AND SPLICING IN EXISTING POLE SHALL BE COVERED AND INCLUDED IN THE PAY ITEM FOR THE UNIT DUCT. THIS PAY ITEM SHALL ALSO INCLUDE NEW FUSE KITS FOR THE EXISTING LIGHT POLES BEING AFFECTED BY THE PROPOSED WORK.
- THE CABLE TRENCH SHALL BE BACKFILLED AND FIRMLY COMPACTED BEFORE ANY LIGHT STANDARD IS ERECTED.
- ANY DAMAGE TO PAVEMENT, SIDEWALK, CURB, OR ANY OTHER PORTION OF THE ROADWAY NOT SPECIFICALLY TO BE REMOVED AND REPLACED SHALL BE REPAIRED OR REPLACED BY THE CONTRACTOR AT NO ADDITIONAL COST AND REPLACEMENT SHALL MEET THE APPROVAL OF THE ENGINEER.
- COORDINATE WITH TRAFFIC SIGNAL PLANS FOR EXACT LOCATIONS OF COMBINATION POLES. COMBINATION POLES ARE IN TRAFFIC SIGNAL PAY ITEMS, LUMINAIRES ARE IN PROPOSED LIGHTING PAY ITEMS.
- OFFSET CALL-OFFS ARE FROM THE CENTER OF POLES TO FACE OF CURB (F.O.C.).
- TEMPORARY LIGHTING SHALL BE INSTALLED AND OPERATIONAL BEFORE DISCONNECTING AND REMOVING EXISTING LIGHTING UNITS.
- TEMPORARY LIGHTING SHALL REMAIN OPERATIONAL UNTIL THE PROPOSED LIGHTING SYSTEM IS INSTALLED AND IS OPERATIONAL.
- AT NO TIME SHALL THE ROADWAY BE LEFT UNLIT.

LIGHTING BILL OF MATERIALS

CODED PAY ITEM NUMBER	ITEMS	UNIT	QUANTITY
80400100	ELECTRIC SERVICE INSTALLATION	EACH	1
80400200	ELECTRIC UTILITY SERVICE CONNECTION	L SUM	1
81028210	UNDERGROUND CONDUIT, GALVANIZED STEEL, 2 1/2" DIA.	FOOT	320
81028220	UNDERGROUND CONDUIT, GALVANIZED STEEL, 3" DIA.	FOOT	1195
81603051	UNIT DUCT, 600V, 3-1C NO.6, 1/C NO.8 GROUND, (XLP-TYPE USE), 1 1/4" DIA.	FOOT	3386
81702460	ELECTRIC CABLE IN CONDUIT, 600V (XLP-TYPE USE) 3-1/C NO. 3/0	FOOT	330
81800330	AERIAL CABLE, 3-1/C NO.6 WITH MESSENGER WIRE	FOOT	2708
82102400	LUMINAIRE, SODIUM VAPOR, HORIZONTAL MOUNT, 400 WATT	EACH	13
82500365	LIGHTING CONTROLLER, BASE MOUNTED, 480 VOLT, 150 AMP	EACH	1
83050810	LIGHT POLE, ALUMINUM, 47.5 FT. M.H., 15 FT. MAST ARM	EACH	7
83600200	LIGHT POLE FOUNDATION, 24" DIAMETER	FOOT	70
83800205	BREAKAWAY DEVICE, TRANSFORMER BASE, 15 INCH BOLT CIRCLE	EACH	7
84200804	REMOVAL OF POLE FOUNDATION	EACH	2
84400105	RELOCATE EXISTING LIGHTING UNIT	EACH	2
84500110	REMOVAL OF LIGHTING CONTROLLER	EACH	1
84500120	REMOVAL ELECTRIC SERVICE INSTALLATION	EACH	1
84500130	REMOVAL OF LIGHTING CONTROLLER FOUNDATION	EACH	1
89502300	REMOVE ELECTRIC CABLE FROM CONDUIT	FOOT	12208
Z0033028	MAINTENANCE OF LIGHTING SYSTEM	CAL MO	2
X0326148	TEMPORARY WOOD POLE, 60 FT., CLASS 4, 15 FT. MAST ARM	EACH	5
X0327349	TEMPORARY WOOD POLE, 40 FT., CLASS 4	EACH	3
X8210040	TEMPORARY LUMINAIRE, HIGH PRESSURE SODIUM VAPOR, HORIZONTAL MOUNT, 400 WATT	EACH	8
X8360215	LIGHT POLE FOUNDATION, 24" DIAMETER, OFFSET	FOOT	12
X8410103	REMOVE TEMPORARY LIGHTING SYSTEM	L SUM	1
X8772115	TEMPORARY MAST ARM, ALUMINUM, 15 FT.	EACH	8



USER NAME = brd	DESIGNED - SJC	REVISED - 03/07/2014
	DRAWN - NEM	REVISED -
PLOT SCALE = 100.0000' / in.	CHECKED - DNM	REVISED -
PLOT DATE = 3/7/2014	DATE - 1/30/2014	REVISED -

**STATE OF ILLINOIS  
DEPARTMENT OF TRANSPORTATION**

**LIGHTING NOTES, LEGEND, AND SCHEDULE OF QUANTITIES  
US ROUTE 34 (OGDEN AVENUE) AT IL ROUTE 59**

F.A.P. RTE.	SECTION	COUNTY	TOTAL SHEETS	SHEET NO.
311	2013-062TS		49	35
			CONTRACT NO. 60X34	
SHEET NO. 1 OF 1 SHEETS		STA.	TO STA.	
ILLINOIS FED. AID PROJECT				