

FOR INDEX OF SHEETS, SEE SHEET NO. 2

STATE OF ILLINOIS
DEPARTMENT OF TRANSPORTATION
DIVISION OF HIGHWAYS
**PROPOSED
HIGHWAY PLANS**

DISTRICT 1
HIGHWAY SAFETY IMPROVEMENT PROJECT
FAP ROUTE 344 (IL ROUTE 83)
IL ROUTE 83 (KINGERY HWY. & BUSSE RD.)
THIRD AVENUE / OAK MEADOWS DRIVE
TO MARK STREET
PROJECT: ACHSIP-0344(058)
SECTION 2013-063TS
DUPAGE COUNTY
C-91-074-14



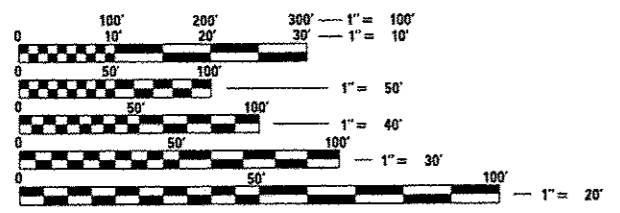
HIGHWAY STANDARD

000001-06	STANDARD SYMBOLS, ABBREVIATIONS, AND PATTERNS
424001-07	PERPENDICULAR CURB RAMPS FOR SIDEWALKS
424006-01	DIAGONAL CURB RAMPS FOR SIDEWALKS
442201-03	CLASS C AND D PATCHES
606001-05	CONCRETE CURB TYPE B AND COMBINATION CONCRETE CURB AND GUTTER
701101-04	OFF-ROAD OPERATIONS, MULTILANE, 15' TO 24" FROM PAVEMENT EDGE
701106-02	OFF-ROAD OPERATIONS, MULTILANE, MORE THAN 15' AWAY
701421-06	LANE CLOSURE, MULTILANE, DAY OPERATIONS ONLY, FOR SPEEDS 45-55 MPH
701601-09	URBAN LANE CLOSURE, MULTILANE, 1W OR 2W WITH NONTRAVERSABLE MEDIAN
701701-09	URBAN LANE CLOSURE, MULTILANE INTERSECTION
701801-05	SIDEWALK, CORNER OR CROSSWALK CLOSURE
701901-03	TRAFFIC CONTROL DEVICES
720001-01	SIGN PANEL MOUNTING DETAILS
805001-01	ELECTRIC SERVICE INSTALLATION DETAILS
814001-02	HANDHOLES
814006-02	DOUBLE HANDHOLES
857001-01	STANDARD PHASE DESIGNATION DIAGRAMS AND PHASE SEQUENCES
862001-01	UNINTERRUPTIBLE POWER SUPPLY (UPS)
873001-02	TRAFFIC SIGNAL GROUNDING AND BONDING
877001-05	STEEL MAST ARM ASSEMBLY AND POLE, 16' THROUGH 55'
877002-02	STEEL MAST ARM ASSEMBLY AND POLE, 56' THROUGH 75'
878001-09	CONCRETE FOUNDATION DETAILS
880001-01	SPAN WIRE MOUNTED SIGNALS AND FLASHING BEACON INSTALLATION
880006-01	TRAFFIC SIGNAL MOUNTING DETAILS
886001-01	DETECTOR LOOP INSTALLATIONS

DESIGN DESIGNATIONS

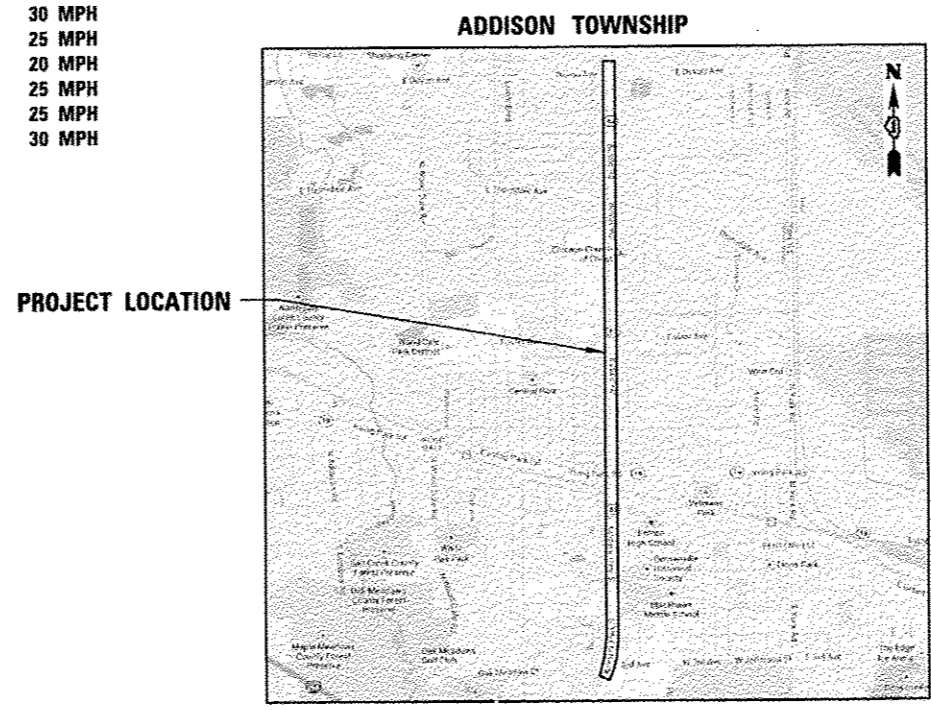
ROUTE	FUNCTIONAL CLASSIFICATION	ADT	DESIGN SPEED	POSTED SPEED
IL ROUTE 83	STRATEGIC REGIONAL ARTERIAL (SRA)	49,500 (2011)	50 MPH	45 MPH
THIRD AVENUE	MAJOR COLLECTOR	7,800 (2012)	35 MPH	30 MPH
OAK MEADOWS DRIVE	MAJOR COLLECTOR	7,800 (2012)	35 MPH	30 MPH
GROVE AVENUE	MAJOR COLLECTOR	N/A	30 MPH	25 MPH
SHERWOOD DRIVE	LOCAL STREET	N/A	25 MPH	20 MPH
HILLSIDE DRIVE	LOCAL STREET	N/A	30 MPH	25 MPH
FOSTER AVENUE	MAJOR COLLECTOR	3,400 (2012)	30 MPH	25 MPH
MARK STREET	LOCAL STREET	1,650 (2012)	35 MPH	30 MPH

IMPROVEMENTS LOCATED IN THE VILLAGE OF BENSENVILLE AND THE CITY OF WOOD DALE



FULL SIZE PLANS HAVE BEEN PREPARED USING STANDARD ENGINEERING SCALES. REDUCED SIZED PLANS WILL NOT CONFORM TO STANDARD SCALES. IN MAKING MEASUREMENTS ON REDUCED PLANS, THE ABOVE SCALES MAY BE USED.

J.U.L.I.E.
JOINT UTILITY LOCATING INFORMATION FOR EXCAVATORS
1-800-892-0123
OR 811



LOCATION MAP

GROSS AND NET LENGTH = 17,320 FEET = 3.28 MILES

PROJECT ENGINEER: AMIR CUBIC / LUKASZ POCIECHA (847) 705-4419
PROJECT MANAGER: SUDUD MAHMOUD (847) 705-4420
CONTRACT NO. 60X35

PLANS PREPARED BY:
CIVILTECH
450 E. Devon Ave., Suite 300 - Itasca, Illinois 60143
Tel: 630.773.3900 - Fax: 630.773.3975
www.civiltechinc.com



SIGNED: *Joseph J. Emry*
JOSEPH EMRY, P.E. IL LIC. NO. 062-057496
EXPIRES 11-30-2015
DATE: 01/30/14

STATE OF ILLINOIS
DEPARTMENT OF TRANSPORTATION
DIVISION OF HIGHWAYS
SUBMITTED: *Jan 31 2014*
John D. Baranzelli
DEPUTY DIRECTOR OF HIGHWAYS, REGION ENGINEER
March 21 2014
John D. Baranzelli, P.E.
ENGINEER OF DESIGN AND ENVIRONMENT
March 21 2014
Omer Osman, P.E.
DIRECTOR OF HIGHWAYS, CHIEF ENGINEER

PRINTED BY AUTHORITY
OF THE STATE OF ILLINOIS