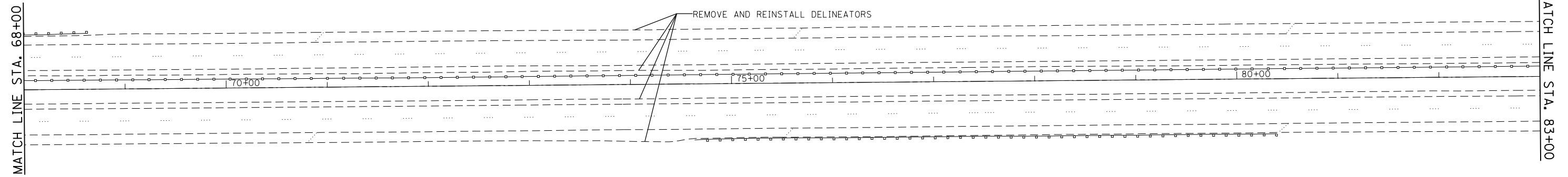
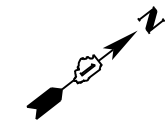


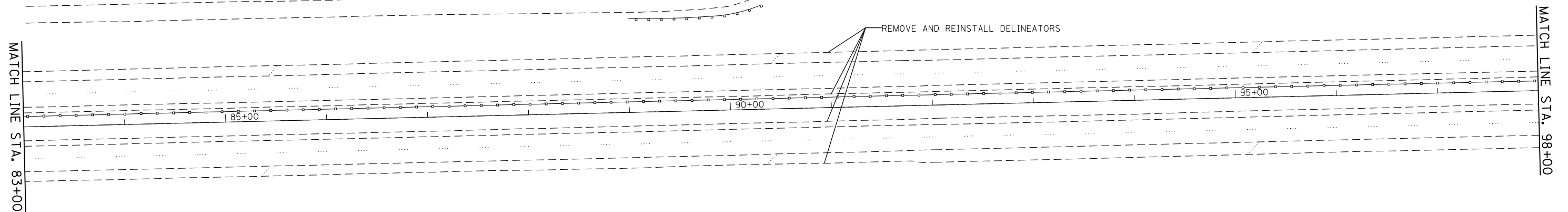
INTERSTATE 80



NOTE:
 REMOVE AND REINSTALL DELINEATORS ACCORDING TO STANDARD 635001.
 EXACT LOCATIONS TO BE DETERMINED BY THE ENGINEER IN THE FIELD.



INTERSTATE 80



FILE NAME =	USER NAME = PencePL	DESIGNED -	REVISED -
c:\pwork\work\pwork\pencepl\d0367985\011134-sht-plan.dgn		DRAWN -	REVISED -
Default	PLOT SCALE = 100.0000' / in.	CHECKED -	REVISED -
	PLOT DATE = 1/31/2014	DATE -	REVISED -

STATE OF ILLINOIS
 DEPARTMENT OF TRANSPORTATION

I-80 (GRUNDY COUNTY LINE TO HOUBOLT ROAD)
 ROADWAY PLAN

SCALE: SHEET 3 OF 13 SHEETS STA. 68+00 TO STA. 98+00

F.A.I. RTE.	SECTION	COUNTY	TOTAL SHEETS	SHEET NO.
80	2013-0711	WILL	19	6
CONTRACT NO. 60X48			ILLINOIS FED. AID PROJECT	