

STATE OF ILLINOIS
 DEPARTMENT OF TRANSPORTATION
 DIVISION OF HIGHWAYS

**PROPOSED
 HIGHWAY PLANS**

FAI ROUTE 55: INTERSTATE 55
 NORTHBOUND BOLINGBROOK WEIGH STATION
 SECTION (99-1TWS-2)PP
 WEIGH STATION PATCHING
 WILL COUNTY

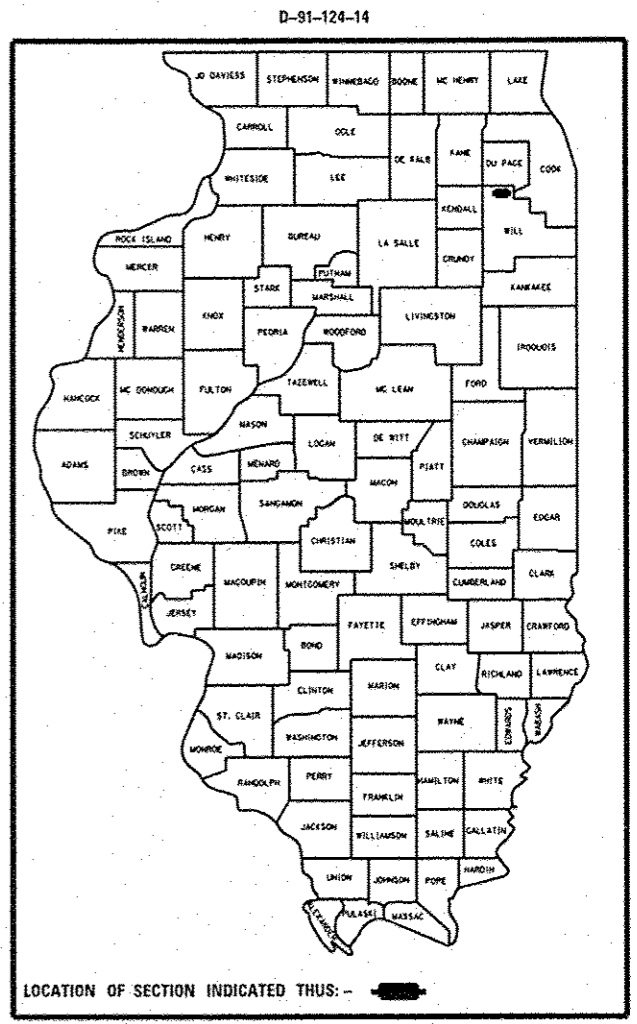
C-91-124-14

R 10 E

FAI RTE.	SECTION	COUNTY	TOTAL SHEETS	SHEET NO.
55	99-1TWS-2)PP	WILL	16	1
ILLINOIS			CONTRACT NO. 60X53	

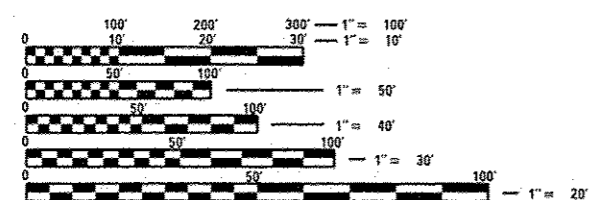
FOR INDEX OF SHEETS, SEE SHEET NO. 2

IMPROVEMENT IS LOCATED IN THE VILLAGE OF BOLINGBROOK.



TRAFFIC DATA

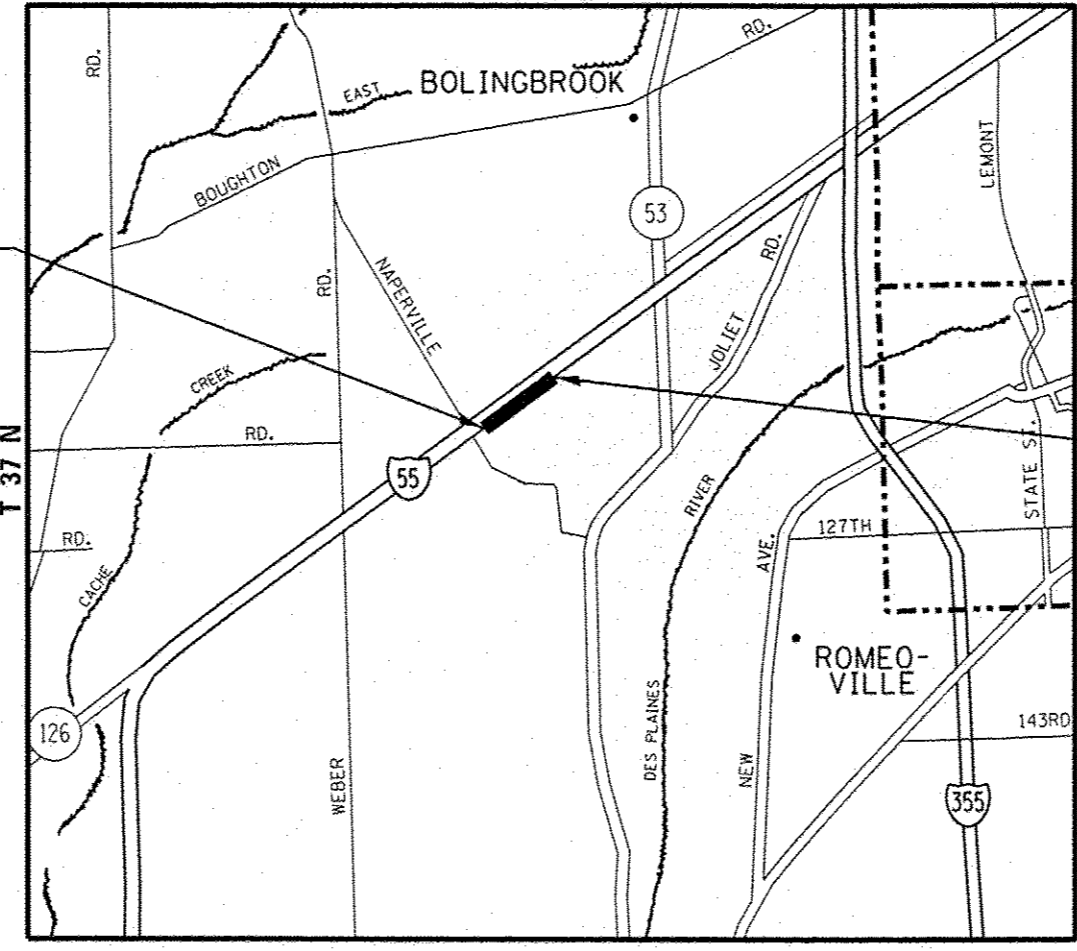
2012 ADT = 7000
 POSTED SPEED LIMIT = 30 MPH



FULL SIZE PLANS HAVE BEEN PREPARED USING STANDARD ENGINEERING SCALES. REDUCED SIZED PLANS WILL NOT CONFORM TO STANDARD SCALES. IN MAKING MEASUREMENTS ON REDUCED PLANS, THE ABOVE SCALES MAY BE USED.

J.U.L.I.E.
 JOINT UTILITY LOCATION INFORMATION FOR EXCAVATION
 1-800-892-0123
 OR 811

IMPROVEMENT BEGINS
 STA 384 + 75.00



IMPROVEMENT ENDS
 STA 410 + 15.00

PROJECT ENGINEER: J. ALAIN MIDY (847) 221-3056
 PROJECT MANAGER: ISSAM RAYYAN (847) 705-4178

DUPAGE TOWNSHIP

GROSS AND NET LENGTH = 2540.00 FT. = 0.481 MILE

STATE OF ILLINOIS
 DEPARTMENT OF TRANSPORTATION
 DIVISION OF HIGHWAYS

SUBMITTED February 3, 20 14
 Deputy Director of Highways, Region Engineer
 March 21, 20 14
 John D. Baranzelli, P.E. PE, PE
 ENGINEER OF DESIGN AND ENVIRONMENT
 March 21, 20 14
 Omer Osman, P.E. PE, PE
 DIRECTOR OF HIGHWAYS, CHIEF ENGINEER

PRINTED BY THE AUTHORITY
 OF THE STATE OF ILLINOIS

CONTRACT NO. 60X53