

RECORD DRAWING

REVISION	DESCRIPTION	DATE	APP'D

GENERAL CONTRACTOR: ORANGE CRUSH RECYCLE L.P.
 SUBCONTRACTOR: J.F. EDWARDS CONSTRUCTION COMPANY
 WILL COUNTY - CONTRACT #60549
 SECTION (28,29,121) MRS-11 PROJECT #STPI-55-6(19-1)264
 JFECC JOB #111389

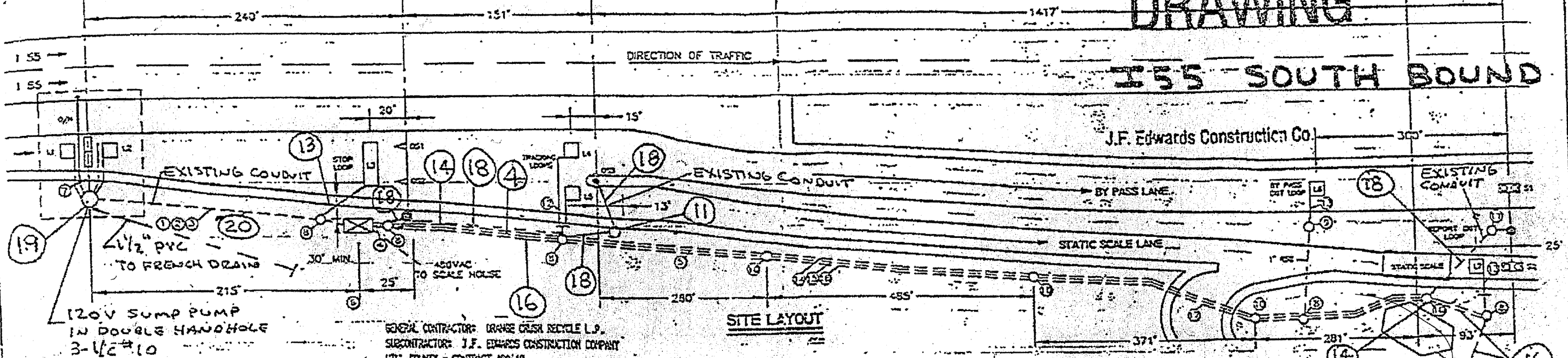
OVER HEAD LANE
 DIRECTIONAL SIGNALS
 STA. 410+41

TOP OF POLE
 LANE
 DIRECTIONAL SIGN
 STA. 408+90

DYNAMIC SCALE
 STA. 412+81

I-55 SOUTH BOUND

J.F. Edwards Construction Co.



SITE LAYOUT

CABLE DETAILS:

- CONDUIT - 2-#22, 6" PAIR INCL. TW. & SH. STRANDED PE JACKET
- LOOPS - #14 LOOP WIRE
- OH DET. - 2 - #18, 1-PAIR TW. & SH.
- WM SCALE - 2 - #20, 6-PAIR TW. & SH.
- AXLE SENSOR - 100' CABLE ATTACHED TO SENSOR #18, 1-PAIR TW. & SH.
- 480VAC POWER - 4-#6 AWG, BLK, RED, WHITE, GREEN - 240V/480V TRANSFORMER AT SCALE HOUSE AND WM CABINET

LOOP#	LOOP SIZE	# TURNS
1	6'x6'	4
2	8'x6'	4
3	6'x14'	3
4	8'x8'	4
5	8'x8'	4
6	8'x8'	7
7	8'x8'	7

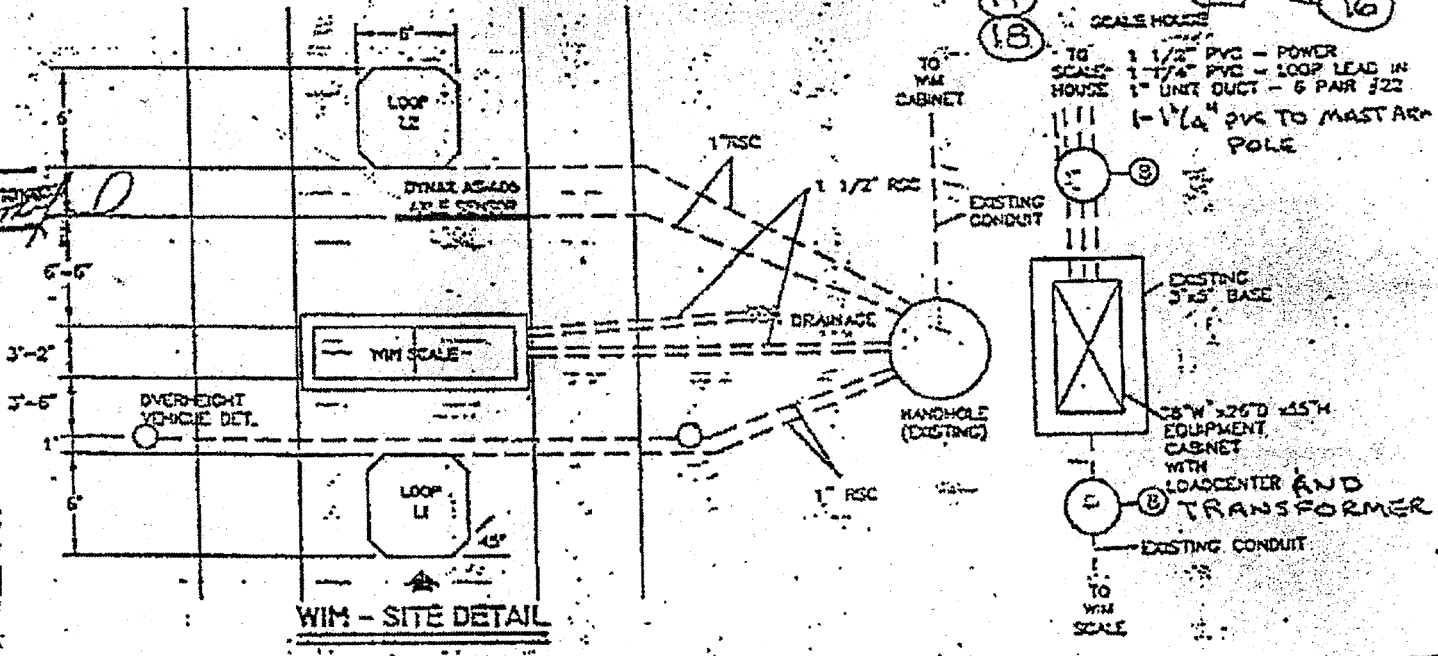
NOTES:

- AXLE SENSOR 1-#18 1-PAIR TW. & SH. - WM SCALE 2-#20 6-PAIR TW. & SH.
- LOOPS 1&2: 2 - #14 TW. & SH. & LOOP LEADS
- OH DETECTOR 2-#18 1-PAIR TW. & SH.
- LOOPS 4-7: 4-#14 TW. & SH. IN 1 1/4" PVC CONDUIT 2 - 6 PAIR #22 TW. & SH.
- EXT LOOPS, 2 - 1 1/2" TW. & SH. IN 1 1/4" PVC CONDUIT. LOOPS 6, 7.
- WM CABINET (1RD) MOUNTED ON EXISTING BASE (BREAK OFF TOP & REPAIR TO 12" ABOVE FINISH GRADE). LOADCENTER PROVIDES 110 VAC 2 - 10 AMP CIRCUITS AND 1 - 20 AMP CIRCUIT. DRY TYPE TRANSFORMER 480V TO 120V/240V
- EXISTING OVERHEIGHT BASES MUST BE LOCATED BETWEEN L1 AND L2.
- PROPOSED HAND HOLE.
- PROPOSED HEAVY DUTY HANDHOLE.
- EXISTING HANDHOLE.
- EXISTING HEAVY DUTY HANDHOLE.
- 2 - 1" UNIT DUCT.
- 1" UNIT DUCT (TYPICAL).

- EXISTING 1" UNIT DUCT WITH 2 - 6 PAIR #22.
- PROPOSED 1 1/4" SCH. 40 PVC WITH 2-2C #14 TW./SH LEAD IN CABLES.
- PROPOSED 1 1/2" SCH. 40 PVC WITH 4-1C #6 (POWER CABLES) FOR SOUTHBOUND SCALES.
- 2 1/2" (MIN.) GALVANIZED RIGID STEEL CONDUIT UNDER ROADWAY FOR 1 1/4" & 1 1/2" PVC CONDUIT.
- POWER TO OS1, OS2 AND OS3 TO BE SUPPLIED FROM WM CABINET. POWER TO S1 AND S2 TO BE SUPPLIED FROM SCALEHOUSE.
- CONDUIT AND PULLBOXES AS REQUIRED. CABLE CROSSING UNDER PAVED SURFACES IS PLACED IN GALVANIZED RIGID STEEL CONDUIT. ALL OTHER CONDUITS INSTALLED WILL BE SCH 40 PVC.
- EXISTING POWER FOR SIGNALS WILL BE REUSED OR REWIRED WITH 1-3C #12 MSA 18-1 SOLID COPPER TO EACH HEAD, 1" OR 1 1/2" PVC.
- PROPOSED DOUBLE HANDHOLE.
- 3-#6 AWG FOR SUMP PUMP.

APPROVED

ENGINEER OF OPERATIONS
 9/15/95
 SEP 20 1995



WIM - SITE DETAIL

FOR INFORMATION ONLY