

F.A.I. RTE.	SECTION	COUNTY	TOTAL SHEETS	SHEET NO.
55	199-1TWS-2)PP-1	WILL	14	1
		ILLINOIS	CONTRACT NO. 60X54	

STATE OF ILLINOIS
DEPARTMENT OF TRANSPORTATION
DIVISION OF HIGHWAYS

**PROPOSED
HIGHWAY PLANS**

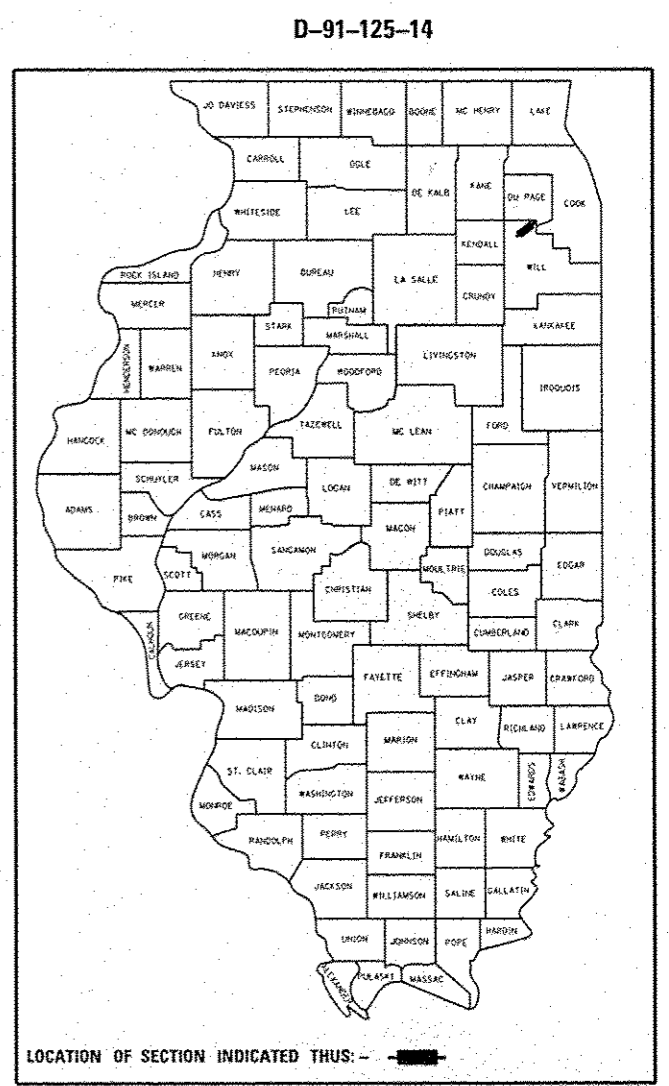
**FAI 55: INTERSTATE 55
SOUTHBOUND BOLINGBROOK WEIGH STATION
SECTION: (99-1TWS-2)PP-1
WEIGH STATION PATCHING
WILL COUNTY**

C-91-125-14

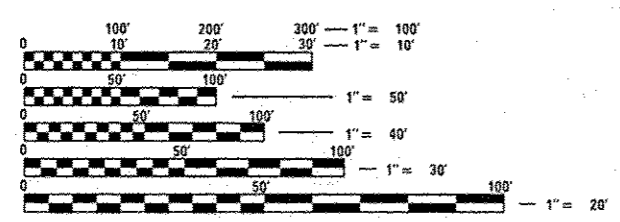
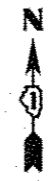
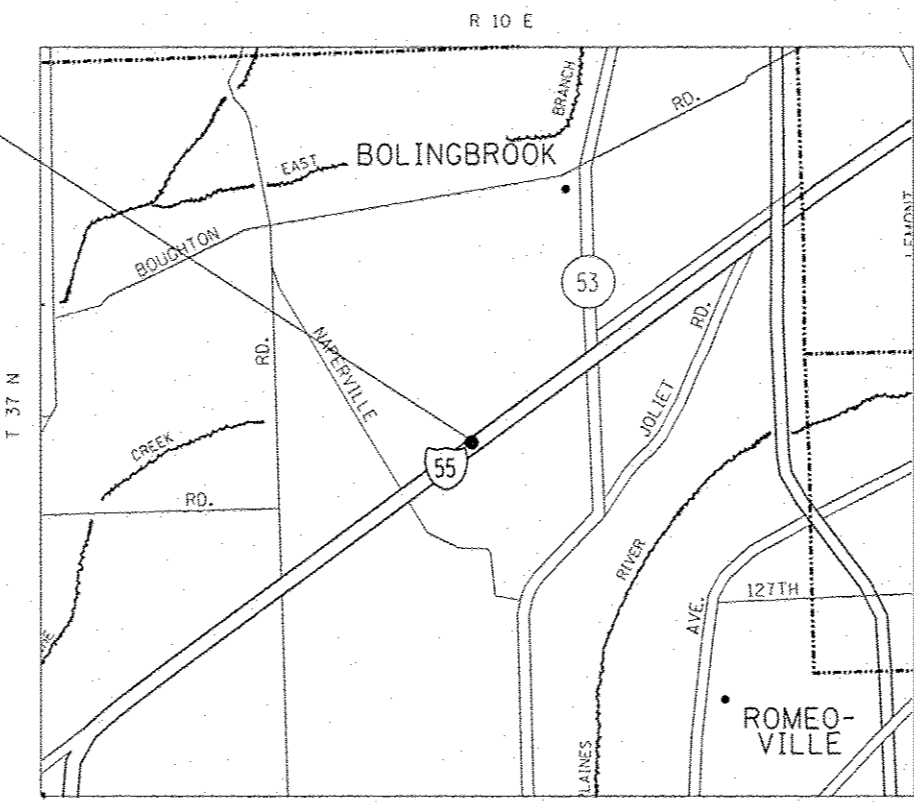
FOR INDEX OF SHEETS, SEE SHEET NO. 2

IMPROVEMENT LOCATED IN THE
VILLAGE OF BOLINGBROOK

TRAFFIC DATA
2012 ADT = 7,000
SPEED LIMIT = 30 MPH



IMPROVEMENT LOCATION



FULL SIZE PLANS HAVE BEEN PREPARED USING STANDARD ENGINEERING SCALES. REDUCED SIZED PLANS WILL NOT CONFORM TO STANDARD SCALES. IN MAKING MEASUREMENTS ON REDUCED PLANS, THE ABOVE SCALES MAY BE USED.

J.U.L.I.E.
JOINT UTILITY LOCATION INFORMATION FOR EXCAVATION
1-800-892-0123
OR 811

PROJECT ENGINEER: JEAN ALAIN MIDY (847) 221-3056
PROJECT MANAGER: ISSAM RAYYAN (847) 705-4178

GROSS AND NET LENGTH = 4100.00 FT. = 0.7765 MILE

CONTRACT NO. 60X54

STATE OF ILLINOIS
DEPARTMENT OF TRANSPORTATION
DIVISION OF HIGHWAYS

SUBMITTED February 7 20 14
John D. Baranzelli, PE, PE
DEPUTY DIRECTOR OF HIGHWAYS, REGION ENGINEER

March 21 20 14
John D. Baranzelli, PE, PE
ENGINEER OF DESIGN AND ENVIRONMENT

March 21 20 14
Omer Osman, PE, PE
DIRECTOR OF HIGHWAYS, CHIEF ENGINEER

**PRINTED BY THE AUTHORITY
OF THE STATE OF ILLINOIS**