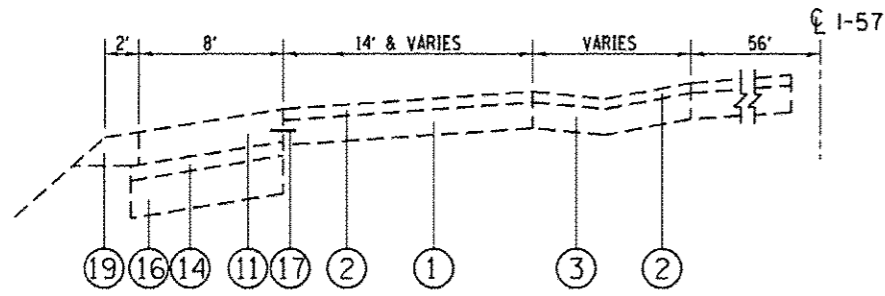
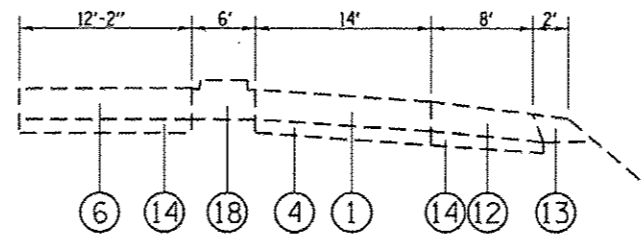


**LEGEND**

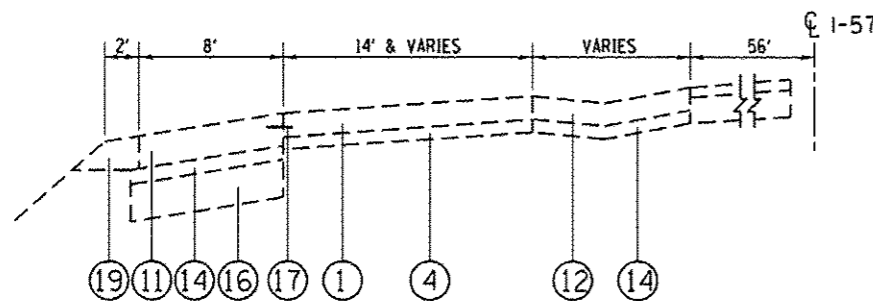
- ① EXIST. CONT. REINF. P.C.C. PAVT., 8"
- ② EXIST. HMA RESURFACING, 3/4"
- ③ EXIST. HMA SHOULDER, 8"
- ④ EXIST. STABILIZED SUB-BASE, 4"
- ⑤ EXIST. CONT. REINF. P.C.C. PAVT., 8"
- ⑥ EXIST. P.C.C. PAVT., (±) 10" (HINGE JOINTED)
- ⑦ EXIST. HMA BINDER CSE., MIX B, TYPE 1, 1 3/4"
- ⑧ EXIST. HMA BINDER CSE., MIX B, TYPE 2, 1 3/4" (SHOULDER)
- ⑨ EXIST. HMA SURFACE CSE., MIX D, CLASS 1, TYPE 1, 1 1/2"
- ⑩ EXIST. HMA SURFACE CSE., MIX D, CLASS 1, TYPE 2, 1 1/2"
- ⑪ EXIST. P.C.C. SHOULDER, (±) 10"
- ⑫ EXIST. HMA SHOULDER, 8"
- ⑬ EXIST. AGGR. SHOULDER, TYPE A, 10"
- ⑭ EXIST. HMA BASE CSE., 4"
- ⑮ EXIST. AGGR. SHOULDER, TYPE A, 11"
- ⑯ EXIST. AGGR. SUBGRADE, 12"
- ⑰ EXIST. #8 TIE BAR
- ⑱ EXIST. MEDIAN
- ⑲ EXIST. HMA SHOULDERS (±) 10"



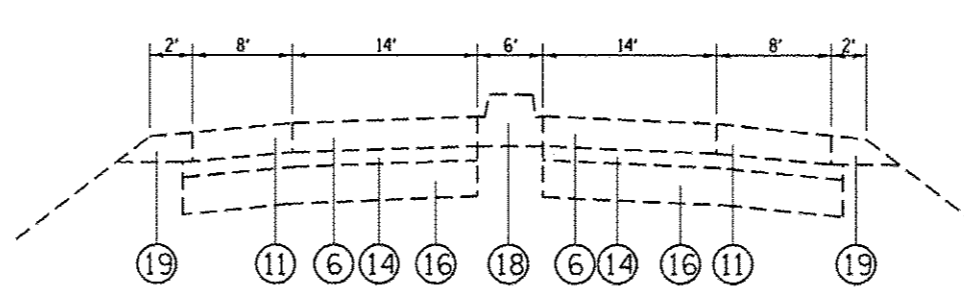
**TYPICAL SECTION**  
**I-57 SB PEOTONE WEIGH STATION**  
 STA. 1073+50 TO STA. 1080+78



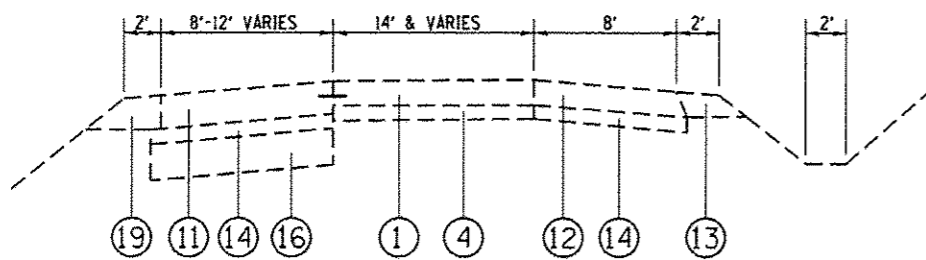
**TYPICAL SECTION**  
**I-57 SB PEOTONE WEIGH STATION**  
 STA. 1090+30 TO STA. 1093+00



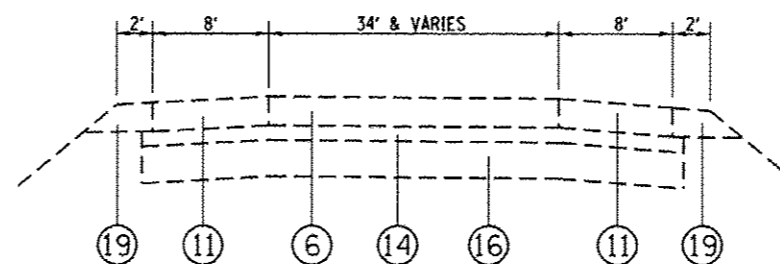
**TYPICAL SECTION**  
**I-57 SB PEOTONE WEIGH STATION**  
 STA. 1080+78 TO STA. 1082+00



**TYPICAL SECTION**  
**I-57 SB PEOTONE WEIGH STATION**  
 STA. 1093+00 TO STA. 1100+00



**TYPICAL SECTION**  
**I-57 SB PEOTONE WEIGH STATION**  
 STA. 1082+00 TO STA. 1089+00



**TYPICAL SECTION**  
**I-57 SB PEOTONE WEIGH STATION**  
 STA. 1100+00 TO STA. 1105+54

Rev. Sheet 4-9-14

FILE NAME *	USER NAME * pyrzanoskirb	DESIGNED -	REVISED -	<b>STATE OF ILLINOIS DEPARTMENT OF TRANSPORTATION</b>	<b>TYPICAL SECTIONS I-57 SB PEOTONE WEIGH STATION</b>			F.A.I. RTE. 57	SECTION 199-2TWSIPP	COUNTY WILL	TOTAL SHEETS 18	SHEET NO. 9
cr:\pw\work\spidot\pyrzanoskirb\037042	D112614-sht-plan.dgn	DRAWN -	REVISED -		SCALE:	SHEET	OF	SHEETS	STA.	TO STA.	ILLINOIS FED. AID PROJECT CONTRACT NO. 60X55	
Default	PLOT SCALE = 100.0000' / in.	CHECKED -	REVISED -									
	PLOT DATE = 3/20/2014	DATE -	REVISED -									