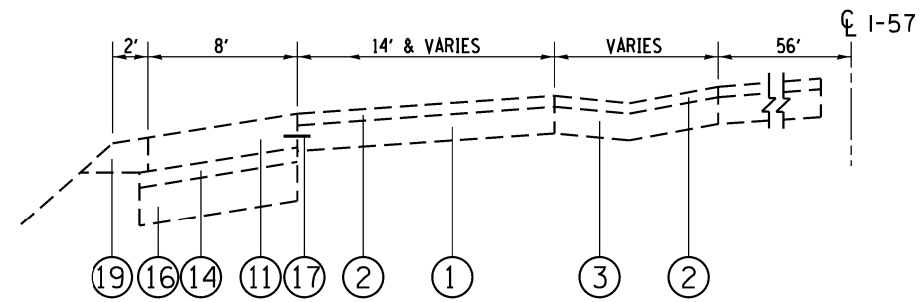
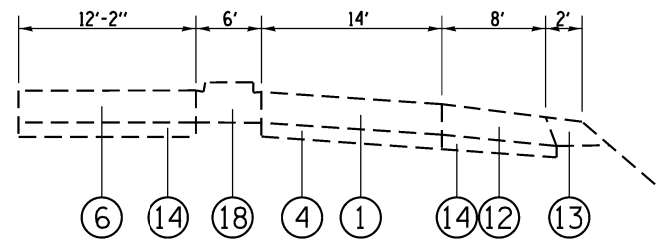


LEGEND

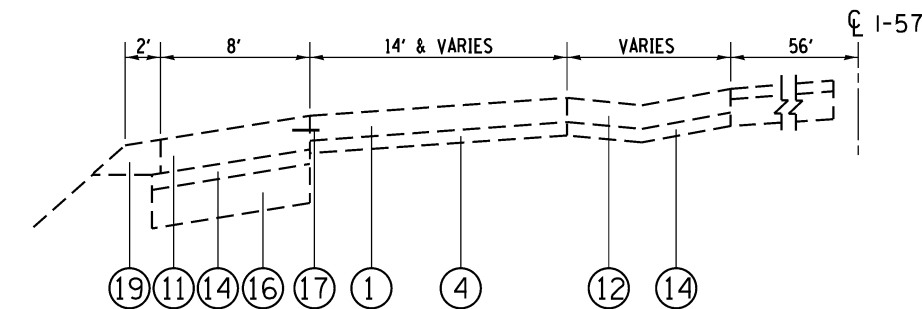
- ① EXIST. CONT. REINF. P.C.C. PAVT., 8"
- ② EXIST. BIT. RESURFACING, 3/4"
- ③ EXIST. BIT. SHOULDER, 8"
- ④ EXIST. STABILIZED SUB-BASE, 4"
- ⑤ EXIST. CONT. REINF. P.C.C. PAVT., 8"
- ⑥ EXIST. P.C.C. PAVT., (±) 10" (HINGE JOINTED)
- ⑦ EXIST. BIT. CONC. BINDER CSE., MIX B, TYPE 1, 1 3/4"
- ⑧ EXIST. BIT. CONC. BINDER CSE., MIX B, TYPE 2, 1 3/4" (SHOULDER)
- ⑨ EXIST. BIT. CONC. SURFACE CSE., MIX D, CLASS 1, TYPE 1, 1 1/2"
- ⑩ EXIST. BIT. CONC. SURFACE CSE., MIX D, CLASS 1, TYPE 2, 1 1/2"
- ⑪ EXIST. P.C.C. SHOULDER, (±) 10"
- ⑫ EXIST. BIT. SHOULDER, 8"
- ⑬ EXIST. AGGR. SHOULDER, TYPE A, 10"
- ⑭ EXIST. BIT. BASE CSE., 4"
- ⑮ EXIST. AGGR. SHOULDER, TYPE A, 11"
- ⑯ EXIST. AGGR. SUBGRADE, 12"
- ⑰ EXIST. #8 TIE BAR
- ⑱ EXIST. MEDIAN
- ⑲ EXIST. BIT. SHOULDERS (±) 10"



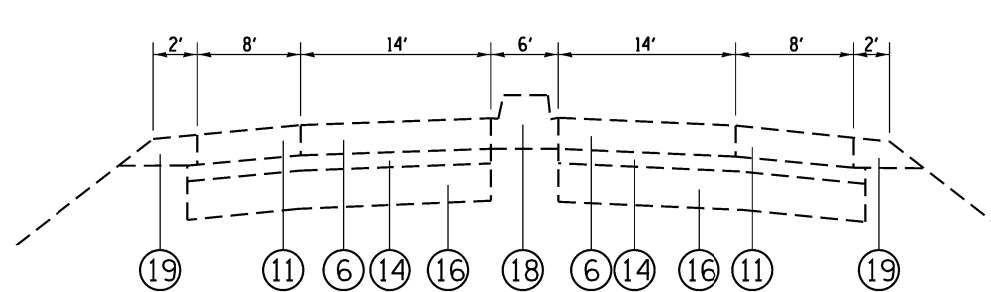
TYPICAL SECTION
I-57 SB PEOTONE WEIGH STATION
 STA. 1073+50 TO STA. 1080+78



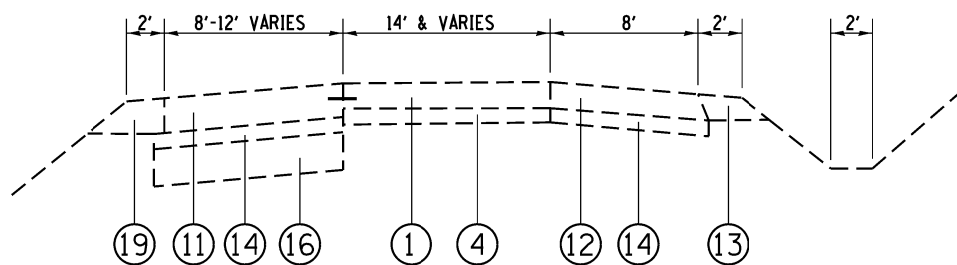
TYPICAL SECTION
I-57 SB PEOTONE WEIGH STATION
 STA. 1090+30 TO STA. 1093+00



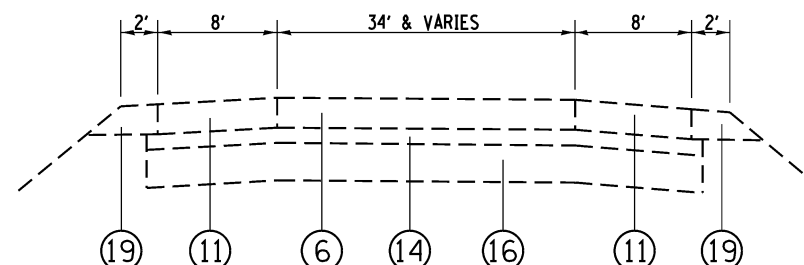
TYPICAL SECTION
I-57 SB PEOTONE WEIGH STATION
 STA. 1080+78 TO STA. 1082+00



TYPICAL SECTION
I-57 SB PEOTONE WEIGH STATION
 STA. 1093+00 TO STA. 1100+00



TYPICAL SECTION
I-57 SB PEOTONE WEIGH STATION
 STA. 1082+00 TO STA. 1089+00



TYPICAL SECTION
I-57 SB PEOTONE WEIGH STATION
 STA. 1100+00 TO STA. 1105+54

| | | | | | | | | | | | | | |
|-------------------------------------------------------------|------------------------------|------------|-----------|-----------------------------------------------------------|-----------------------------------------------------------|-------------|------|-------------|---------|---------------------------|--------------|---------------------------|--|
| FILE NAME = | USER NAME = pyzranowskirb | DESIGNED - | REVISED - | STATE OF ILLINOIS DEPARTMENT OF TRANSPORTATION | TYPICAL SECTIONS I-57 SB PEOTONE WEIGH STATION | | | F.A.I. RTE. | SECTION | COUNTY | TOTAL SHEETS | SHEET NO. | |
| ct:\p\work\p\idot\pyzranowskirb\037042\DI12614-sht-plan.dgn | DI12614-sht-plan.dgn | DRAWN - | REVISED - | | 57 | 199-2TWSJPP | WILL | 18 | 9 | CONTRACT NO. 60X55 | | | |
| Default | PLOT SCALE = 100.0000' / in. | CHECKED - | REVISED - | | SCALE: | SHEET | OF | SHEETS | STA. | TO | STA. | ILLINOIS FED. AID PROJECT | |
| | PLOT DATE = 2/10/2014 | DATE - | REVISED - | | | | | | | | | | |