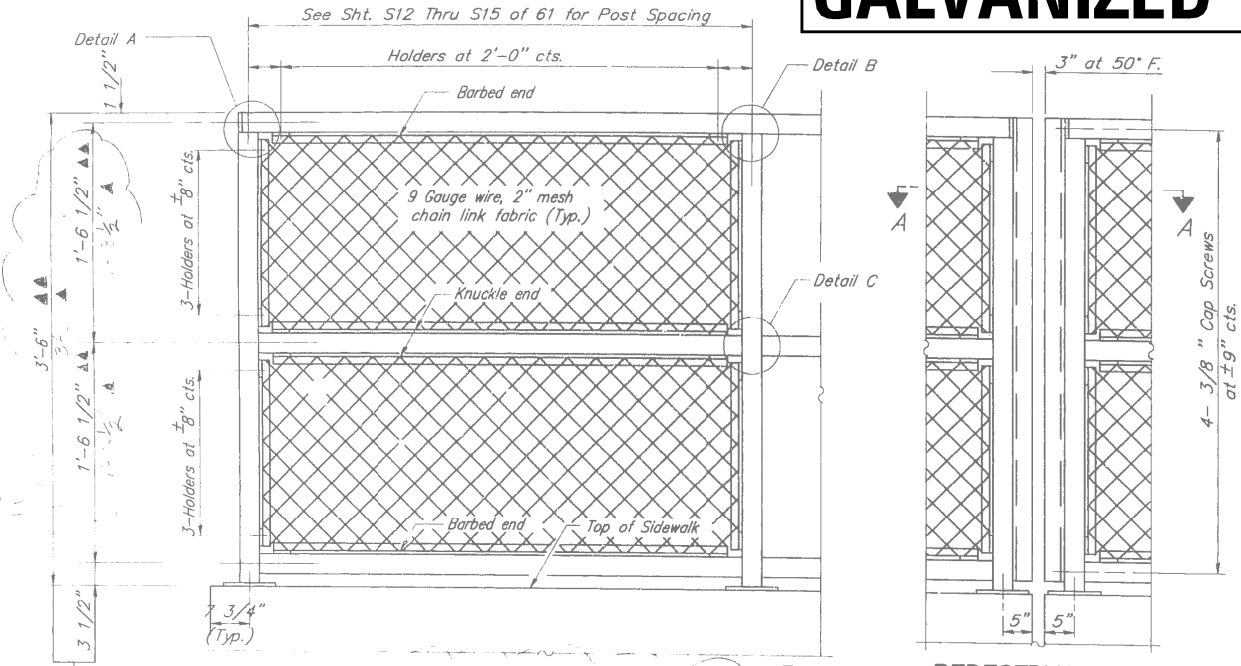
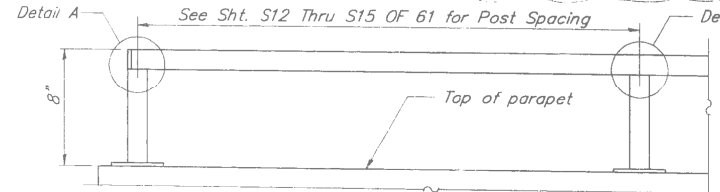


GALVANIZED RAIL NOT TO BE PAINTED



PEDESTRIAN RAIL

▲ Dimensions per SN 016-W017, 016-W018, & 016-W592
 ▲ Dimensions per Cal Sag Bridge SN 016-0927 & 016-1022



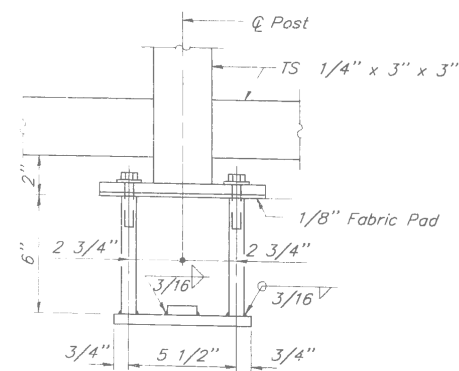
PARAPET RAILING

ELEVATION (Inside Face)

PEDESTRIAN RAIL

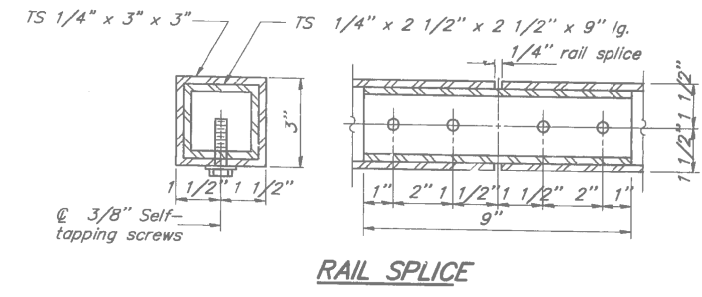
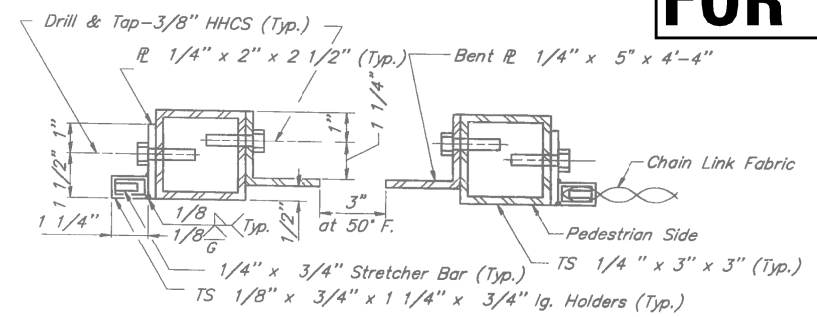
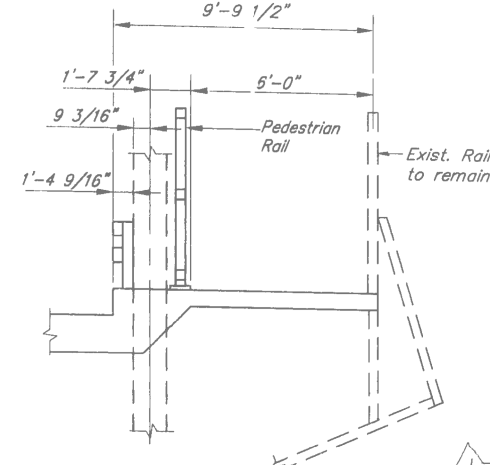
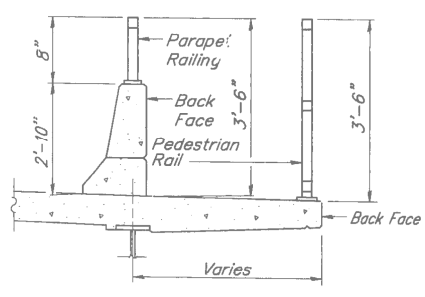
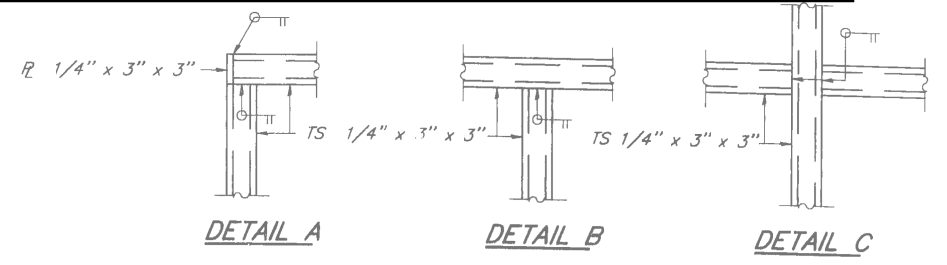
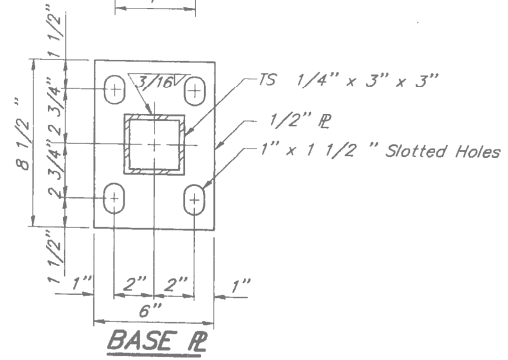
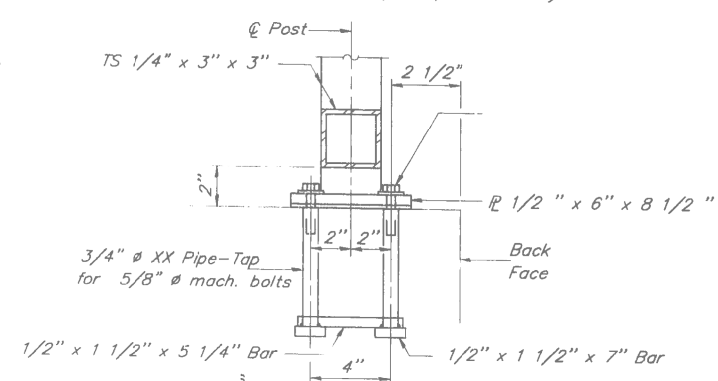
PARAPET RAILING

ELEVATION (At Expansion Joint)



*ANCHOR BOLT DETAILS

* Details shown are for Pedestrian Railing, Details for Parapet Railing are similar, Except the bottom longitudinal TS does not exist.



NOTES

Railing shall be in accordance with Section 509 of the Standard Specifications, except as noted.

The 9 gauge fabric ties shall be in accordance with Article 706.27(d) of the Standard Specifications.

Installation of the chain link fabric shall be in accordance with Section 664 of the Standard Specifications.

Hollow structural steel tubing shall conform to the requirements of ASTM designation A 500, Grade B, structural steel tubing.

All other steel shapes and plates shall conform to the requirements of AASHTO 270 Grade 36.

The chain link fabric shall be placed along Bicycle Side as shown on Section A-A.

Stretcher bars shall be used at all four sides of each panel.

All posts, railing, splices, anchor devices, and bent plates shall be galvanized after shop fabrication in accordance with AASHTO M-111 and ASTM A-385. All bolts, nuts, and washers shall be galvanized in accordance with AASHTO M-232.

Vent holes for galvanizing shall be placed in the posts and rails at locations that will not allow the accumulation of moisture in the members.

The chain link fabric shall conform to the requirements of Article 706.27 (a), (1), (2), or (3) of the Standard Specifications.

Rail Posts shall be installed vertical.

The Railing shall be paid for at the Contract Unit Price per foot for "Parapet Railing (Special)" or "Pedestrian Railing (Special)" as required.

FOR INFORMATION ONLY

FILE NAME =	USER NAME = pyrzenowskirb	DESIGNED -	REVISED -	STATE OF ILLINOIS DEPARTMENT OF TRANSPORTATION	PEDESTRIAN RAIL DETAILS - TRUSS REHABILITATION (SN 016-0427) IL 83 (KINGERY HWY) OVER CAL SAG CHANNEL	F.A.P. RTE.	SECTION	COUNTY	TOTAL SHEETS	SHEET NO.
Default	ct:\pwork\pwork\pyrzenowskirb\037204	NDI15314-sht-plan.dgn	NDI15314-sht-plan.dgn			344	545B-5-BP	COOK	24	10
		PLOT SCALE = 100.0000' / 1"	CHECKED -				SN 016-0427			CONTRACT NO. 60X63
		PLOT DATE = 2/7/2014	DATE -							ILLINOIS FED. AID PROJECT
						SCALE:	SHEET	OF	SHEETS	STA. TO STA.