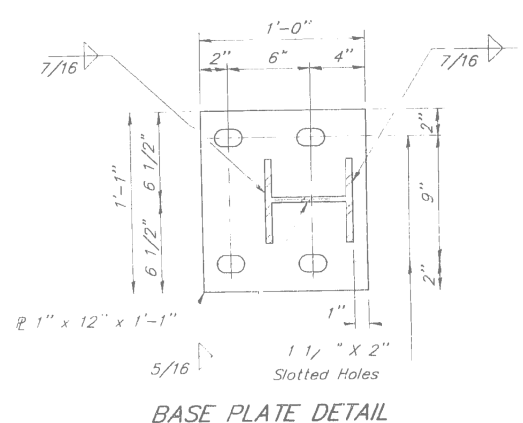
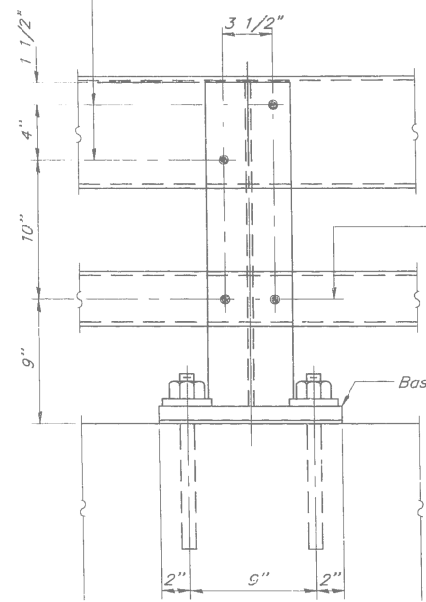


GALVANIZED RAIL NOT TO BE PAINTED

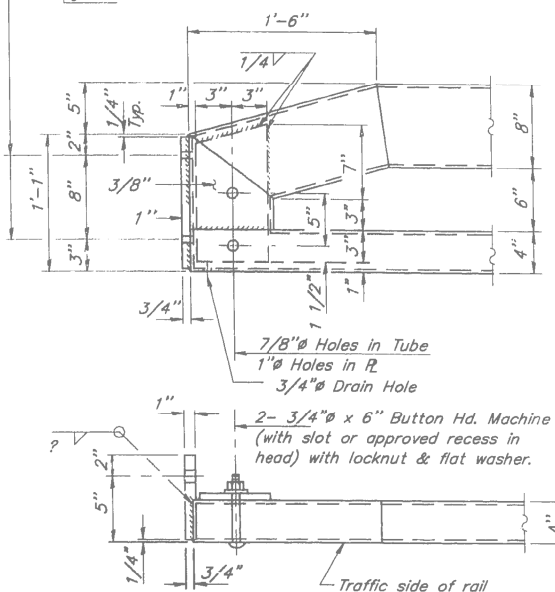


2- 3/16" ϕ x 6" Round Head Bolts (With slot or approved recess in head.) with locknut and flat washer.
7/8" ϕ Holes in tubing and posts. Holes in tubing may be drilled in the field.

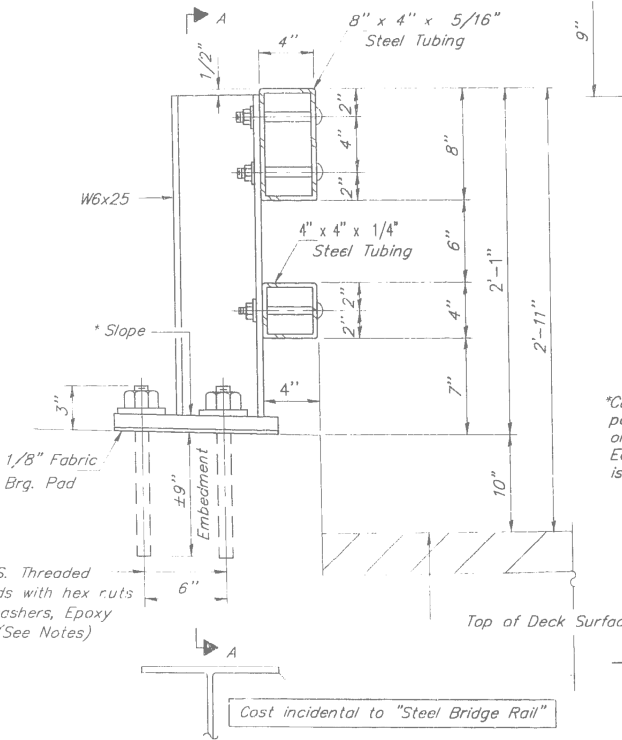


2- 1/2" ϕ x 6" Round Head Bolts (With slot or approved recess in head.) with locknut and flat washer.
5/8" ϕ Holes in tubing and post. Holes in tubing may be drilled in the field.

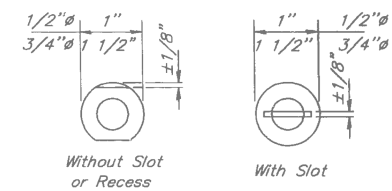
1 1/8" ϕ Holes for 1" ϕ x 4" Round Head Bolts. Provide 2 flat washers & locknuts for guard rail connection shown on Std. 2340.



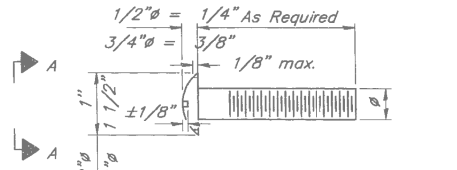
END OF RAIL DETAILS



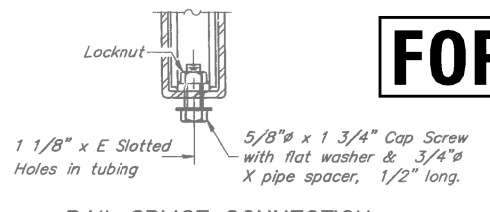
*Cut bottom end of post to curb slope on west side of bridge. East Side of bridge is horizontal.



VIEW A-A



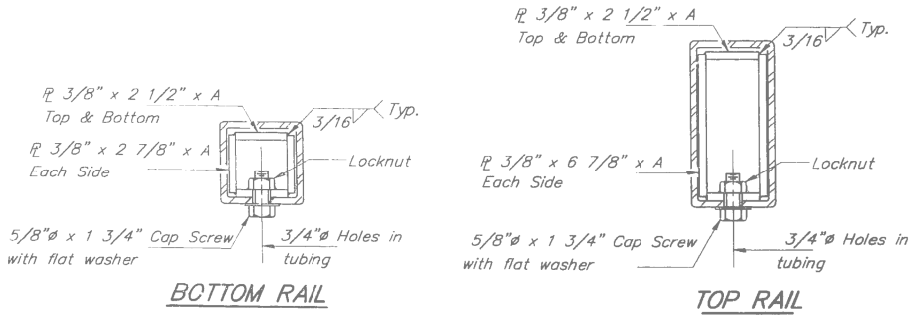
DETAIL OF 1/2" & 3/4" ROUND HEAD BOLTS



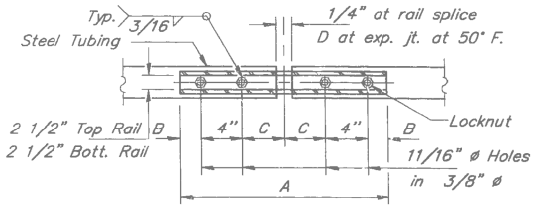
RAIL SPLICE CONNECTION AT EXPANSION JT.

FOR INFORMATION ONLY

SECTION AT RAIL POST



SECTIONS AT RAIL SPLICE



PLAN-BOTT. SPLICE R TYPICAL

SPLICE DIMENSIONS

| T | D | A | B | C | E |
|---------------|--------|--------|--------|--------|--------|
| > 4" | 2 1/2" | 1'-8" | 2" | 4" | 2 1/2" |
| > 4" ≤ 6 1/2" | 3 3/4" | 2'-0" | 2 1/2" | 5 1/2" | 3 1/2" |
| > 6 1/2" ≤ 9" | 5" | 2'-4" | 3 1/2" | 6 1/2" | 9" |
| 9" ≤ 13" | 7" | 2'-10" | 4 1/2" | 8 1/2" | 11" |
| Rail Splice | 1/4" | 1'-8" | 2" | 4" | — |

T = Total movement at expansion joint as shown on the design plans.

TYPE 2399 STEEL BRIDGE RAIL CURB MOUNTED