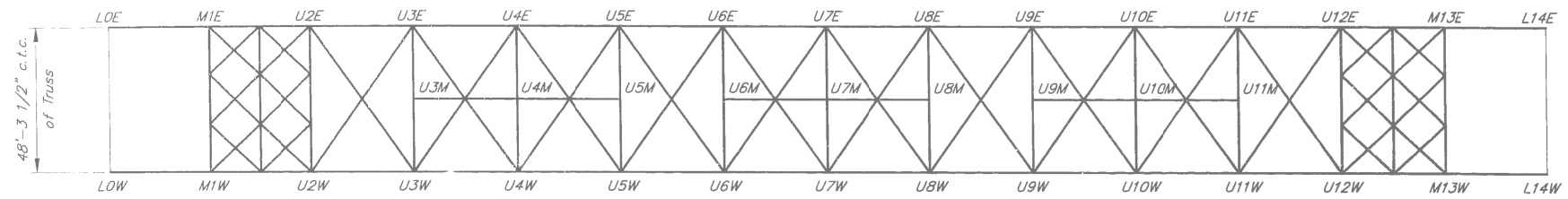
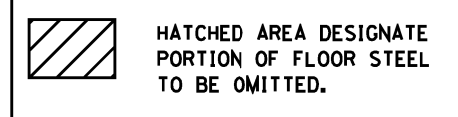


**ELEVATION - WEST TRUSS**  
(East Truss Typical)  
Note: All lines represent Centerlines of Truss Members

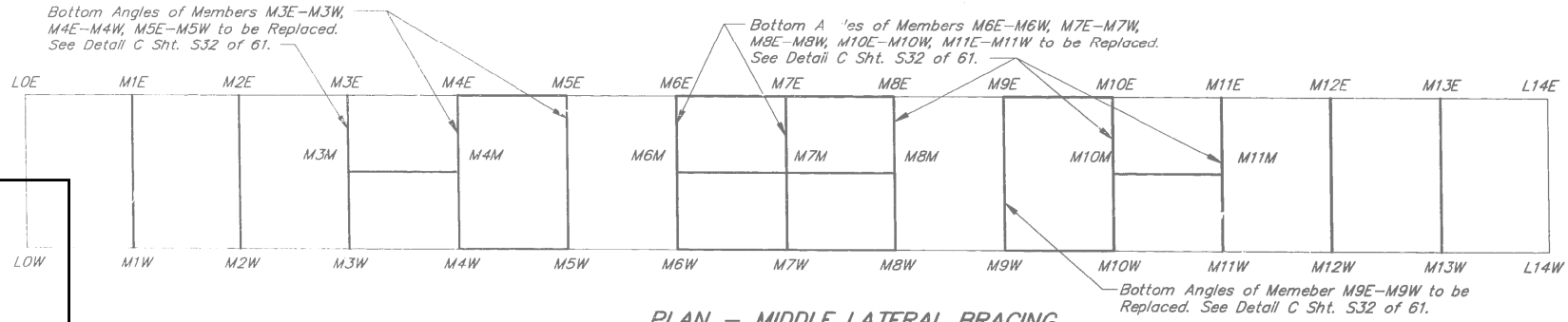
**GENERAL NOTES**

- All Structural Steel to remain shall be painted as per General Note 6 on sheet S-2.
- Exterior underdeck stringers will be removed and replaced in full by W21x57 wide flange beams.
- All new fasteners shall be high strength bolts. Holes shall be subpunched or subdrilled 11/16" and reamed in the field to 13/16" for 3/4" bolts, unless otherwise noted. Holes shall be subpunched or subdrilled 13/16" and reamed in the field to 15/16" for 7/8" bolts, unless otherwise noted.
- Upper and lower rails will be paid for by the bid item STEEL BRIDGE RAIL. Exterior stringers of the truss will be paid for by the bid item FURNISHING AND ERECTING STRUCTURAL STEEL. All other repair work will be included in STRUCTURAL STEEL REPAIR shown below.

**LEGEND**

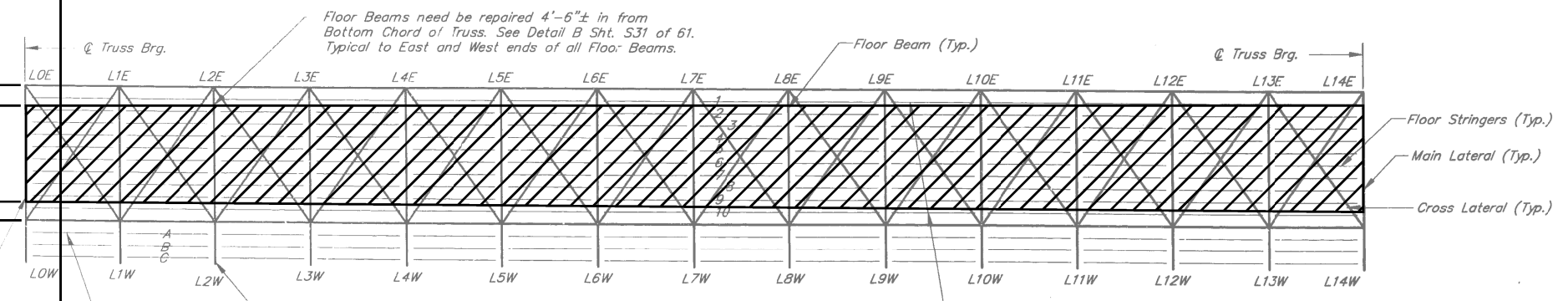


**PLAN - UPPER LATERAL MEMBERS**



**PLAN - MIDDLE LATERAL BRACING**  
NOTE: Two Mid-Frame members exist between Laterals 3&4, 6&7, 7&8, & 10&11. (See Elevation)

**PORTION OF FLOOR STEEL NOT TO BE PAINTED**



**FLOOR PLAN**

Refers to Jt. Lateral Location  
E = East  
M = Middle  
W = West

Refers to Jt. Vertical Location  
U = Upper  
M = Middle  
L = Lower

Refers to Jt. Longitudinal Location  
0 = North End  
11 = South

NOTE: The Bottom Flange of the cross Lateral members is flush with the Bottom Flange of the Truss. The Top Flanges of the Floor Stringers support the deck directly.

FILE NAME =	USER NAME = pyzranowkirb	DESIGNED -	REVISED -	<b>TAMERAN</b>	<b>STATE OF ILLINOIS DEPARTMENT OF TRANSPORTATION</b>	<b>TRUSS REHABILITATION - DETAILS (SN 016-0427) IL 83 (KINGERY HWY) OVER CAL SAG CHANNEL</b>	F.A.P. RTE.	SECTION	COUNTY	TOTAL SHEETS	SHEET NO.	
Default	NDI15314-sht-plan.dgn	DRAWN -	REVISED -				344	545B-5-BP	COOK	24	12	
	PLOT SCALE = 100.0000' / 1"	CHECKED -	REVISED -				<b>CONTRACT NO. 60X63</b>					
	PLOT DATE = 2/7/2014	DATE -	REVISED -				ILLINOIS FED. AID PROJECT					