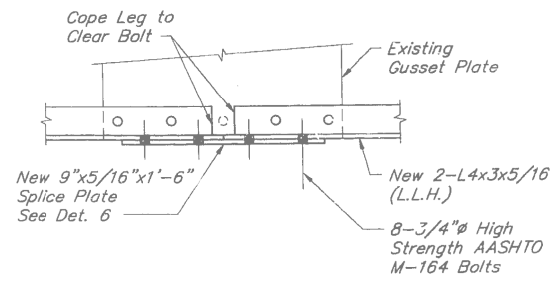
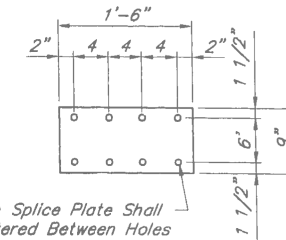


**DETAIL C**



**DETAIL 5**



Holes in Splice Plate Shall be Centered Between Holes in Vertical Leg of Bottom Flange Angles at Center of Gusset Plate

**DETAIL 6**

AREA TO BE PAINTED

FILE NAME =	USER NAME = pyzzenowskirb	DESIGNED -	REVISED -	<b>STATE OF ILLINOIS DEPARTMENT OF TRANSPORTATION</b>	<b>TRUSS REHABILITATION - DETAILS (SN 016-0427) IL 83 (KINGERY HWY) OVER CAL SAG CHANNEL</b>	F.A.P. RTE.	SECTION	COUNTY	TOTAL SHEETS	SHEET NO.	
ct:\pwork\pwork\pyzzenowskirb\037204	NDI15314-sht-plan.dgn	DRAWN -	REVISED -			344	545B-5-BP	COOK	24	13	
Default	PLOT SCALE = 100.0000' / in.	CHECKED -	REVISED -			<b>CONTRACT NO. 60X63</b>					
	PLOT DATE = 2/7/2014	DATE -	REVISED -			ILLINOIS FED. AID PROJECT					
				SCALE:	SHEET	OF	SHEETS	STA.	TO	STA.	