

04-25-14 LETTING ITEM 018

STATE OF ILLINOIS
DEPARTMENT OF TRANSPORTATION
DIVISION OF HIGHWAYS

F.A.P. RYEL.	SECTION	COUNTY	TOTAL SHEETS	SHEET NO.
344	545B-5-BP	COOK	24	1
	SN 016-0427	ILLINOIS	CONTRACT NO. 60X63	

D-91-153-14

FOR INDEX OF SHEETS, SEE SHEET NO. 2

IMPROVEMENT IS LOCATED IN THE VILLAGE OF LEMONT

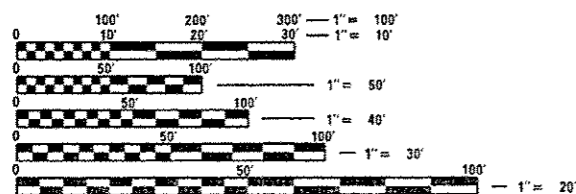
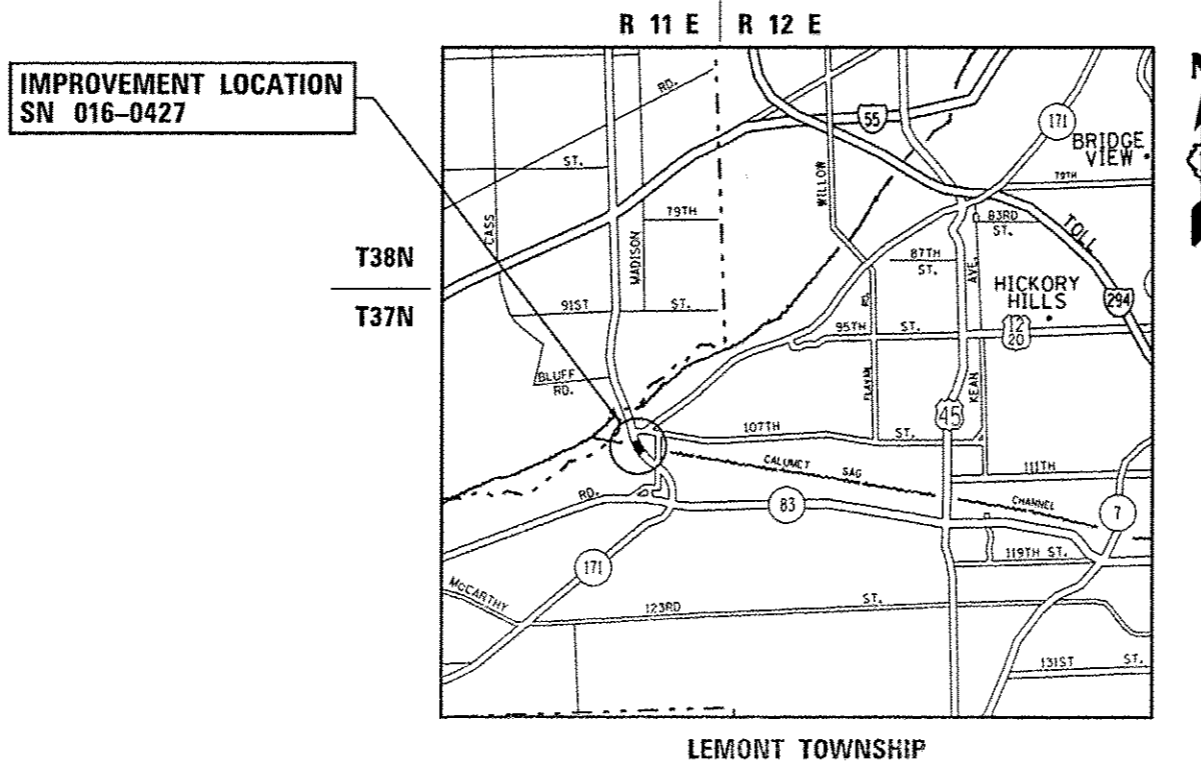
TRAFFIC DATA

2013 ADT = 30,100
POSTED SPEED = 45 MPH

**PROPOSED
HIGHWAY PLANS**

FAP 344: IL 83 (KINGERY HWY)
OVER CAL SAG CHANNEL
SECTION: 545B-5-BP
BRIDGE PAINTING (TRUSS)
COOK COUNTY

C-91-153-14



FULL SIZE PLANS HAVE BEEN PREPARED USING STANDARD ENGINEERING SCALES. REDUCED SIZED PLANS WILL NOT CONFORM TO STANDARD SCALES. IN MAKING MEASUREMENTS ON REDUCED PLANS, THE ABOVE SCALES MAY BE USED.

J.U.L.I.E.
JOINT UTILITY LOCATION INFORMATION FOR EXCAVATION
1-800-892-0123
OR 811

PROJECT ENGINEER: J. ALAIN MIDY (847)-221-3056
PROJECT MANAGER: ISSAM RAYYAN (847)-705-4178

CONTRACT NO. 60X63

GROSS LENGTH = 305.42 FT. = 0.058 MILE
NET LENGTH = 305.42 FT. = 0.058 MILE

STATE OF ILLINOIS
DEPARTMENT OF TRANSPORTATION
DIVISION OF HIGHWAYS

SUBMITTED February 4, 20 14
John P. Baramzali, PE
DEPUTY DIRECTOR OF HIGHWAYS, REGION ENGINEER

March 21, 20 14
John P. Baramzali, PE
ENGINEER OF DESIGN AND ENVIRONMENT

March 21, 20 14
Omer Osman, PE
DIRECTOR OF HIGHWAYS, CHIEF ENGINEER

PRINTED BY THE AUTHORITY
OF THE STATE OF ILLINOIS

INDEX OF SHEETS

SHEET NO.	DESCRIPTION
1	COVER SHEET
2	INDEX OF SHEETS, STANDARDS, AND GENERAL NOTES
3	SUMMARY OF QUANTITIES
4-13	STRUCTURE PLANS (SN 016-0427)
14-18	STAGING PLANS
19-20	FINAL PAVEMENT MARKING PLANS
21	RAISED REFLECTIVE PAVEMENT MARKERS (SNOW-PLow RESISTANT) (TC-11)
22	DISTRICT ONE TYPICAL PAVEMENT MARKINGS (TC-13)
23	TRAFFIC CONTROL AND PROTECTION AT TURN BAYS (TO REMAIN OPEN TO TRAFFIC) (TC-14)
24	ARTERIAL ROAD INFORMATION SIGN (TC-22)

HIGHWAY STANDARDS

STANDARD NO.	DESCRIPTION
701423-07	LANE CLOSURE, MULTILANE, WITH BARRIER, FOR SPEEDS 45 MPH TO 55 MPH
701426-06	LANE CLOSURE, MULTIALNE, INTERMITTENT OR MOVING OPER., FOR SPEEDS ≥ 45 MPH
701606-09	URBAN LANE CLOSURE, MULTILANE, 2-W, WITH MOUNTABLE MEDIAN
701701-09	URBAN LANE CLOSURE, MULTILANE INTERSECTION
701801-05	SIDEWALK, CORNER OR CROSSWALK CLOSURE
701901-03	TRAFFIC CONTROL DEVICES
704001-07	TEMPORARY CONCRETE BARRIER

GENERAL NOTES

BEFORE STARTING ANY EXCAVATION, THE CONTRACTOR SHALL CALL $\frac{1}{2}$ J.U.L.I.E. $\frac{1}{2}$ AT (800) 892-0123 OR 811 FOR FIELD LOCATIONS OF BURIED ELECTRIC, TELEPHONE AND GAS UTILITIES. 48 HOUR NOTIFICATION IS REQUIRED.

THE CONTRACTOR SHALL COORDINATE CONSTRUCTION ACTIVITIES WITH UTILITY COMPANIES, AND THE VILLAGE OF LEMONT.

PLAN DIMENSIONS AND DETAILS RELATIVE TO EXISTING PLANS ARE SUBJECT TO NOMINAL CONSTRUCTION VARIATIONS. THE CONTRACTOR SHALL FIELD VERIFY EXISTING DIMENSIONS AND DETAILS AFFECTING NEW CONSTRUCTION AND MAKE NECESSARY APPROVED ADJUSTMENTS PRIOR TO CONSTRUCTION OR ORDERING OF MATERIALS. SUCH VARIATIONS SHALL NOT BE CAUSE FOR ADDITIONAL COMPENSATION FOR A CHANGE IN SCOPE OF THE WORK. HOWEVER, THE CONTRACTOR WILL BE PAID FOR THE QUANTITY ACTUALLY FURNISHED BASED AT THE UNIT PRICE BID FOR THE WORK.

THE CONTRACTOR WILL NOT BE ALLOWED TO SET UP A YARD OR FIELD OFFICE ON STATE PROPERTY WITHOUT WRITTEN PERMISSION FROM THE DEPARTMENT.

ALL DAMAGE TO EXISTING PAVEMENT MARKINGS OR RAISED REFLECTIVE PAVEMENT MARKERS OUTSIDE THE REMOVAL LINE SHOWN ON THE PLANS SHALL BE REPLACED AT NO ADDITIONAL COST TO THE DEPARTMENT.

THE CONTRACTOR SHALL CONTACT THE DISTRICT ONE TRAFFIC CONTROL SUPERVISOR AT (847)705-4470 A MINIMUM OF 72 HOURS IN ADVANCE OF BEGINNING WORK.

OIL PIPELINES ARE ATTACHED TO BOTH SIDES OF THE BRIDGE. CARE SHOULD BE TAKEN WHILE WORKING AROUND EXISTING PIPELINES.

REMOVAL AND REINSTALLATION OF THE PEDESTRIAN FENCE ALONG THE EAST SIDE OF THE SIDEWALK SHOULD BE INCIDENTAL TO THE IMPROVEMENT.

THE CONTRACTOR SHALL KEEP THE SIDEWALK OPEN DURING PAINTING OPERATION.

THE ENGINEER SHALL CONTACT PATRICE HARRIS, AREA TRAFFIC FIELD ENGINEER, AT (708)597-9800 A MINIMUM OF TWO (2) WEEKS PRIOR TO THE PLACEMENT OF PERMANENT PAVEMENT MARKINGS.

THESE PLANS HAVE BEEN PREPARED FROM NOTES RECEIVED FROM THE BUREAU OF MAINTENANCE.

THE CONTRACTOR SHALL BE REQUIRED TO PROVIDE ACCESS TO ABUTTING PROPERTY AT ALL TIMES DURING THE CONSTRUCTION OF THIS PROJECT.

DO NOT SCALE PLANS FOR CONSTRUCTION DIMENSIONS.

THE CONTRACTOR SHALL OBTAIN COAST GUARD APPROVAL FOR ANY WORK THAT MAY INTERFERE WITH NAVIGATIONAL OPERATIONS OF THE NAVIGABLE WATERS. A WORK PLAN SHALL BE PREPARED BY THE CONTRACTOR, REVIEWED AND APPROVED BY THE ENGINEER AND BE SUBMITTED BY THE ENGINEER TO THE COAST GUARD AT THE ADDRESS LISTED BELOW FOR APPROVAL.

BRIDGE ADMINISTRATOR
US COAST GUARD
NINTH COAST GUARD DISTRICT
1240 E. NINTH ST
CLEVELAND, OH 44199-2060

FOR ACCESS BELOW THE TRUSS, THE CONTRACTOR SHALL CONTACT THE HEAD DISTRICT ATTORNEY, MS. SUSAN MORAKALIS AT (312) 751-6557 FOR A PERMIT OR TEMPORARY EASEMENT.

GENERAL PAINT NOTES

CLEANING AND PAINTING OF THE EXISTING STRUCTURAL STEEL SHALL BE AS SPECIFIED IN THE SPECIAL PROVISION FOR "CLEANING AND PAINTING EXISTING STEEL STRUCTURES".

ALL EXISTING STEEL ABOVE AND BELOW THE DECK, EXCEPT AS NOTED ON THE PLANS, SHALL BE CLEANED PER NEAR WHITE BLAST CLEANING - SSPC-SP10. ALL EXISTING STEEL ABOVE AND BELOW THE DECK, EXCEPT AS NOTED ON THE PLANS, SHALL BE PAINTED ACCORDING TO THE REQUIREMENTS OF PAINT SYSTEM 1-OZ/E/U. THE COLOR OF THE FINAL FINISH COAT FOR ALL INTERIOR STEEL SURFACES SHALL BE GRAY, MUNSELL NO 5B 7/1. THE COLOR OF THE FINAL FINISH COAT FOR TRUSS MEMBERS SHALL BE BLUE, MUNSELL NO 10B 3/6.

THE CONTRACTOR SHALL SUBMIT CALCULATIONS AND DETAILS DEMONSTRATING THE STRUCTURAL INTEGRITY OF THE BRIDGE IS MAINTAINED UNDER THE ADDITIONAL IMPOSED LOADS OF THE CONTAINMENT SYSTEM. SEE SPECIAL PROVISIONS.

A MINIMUM OF TWO (2) AIR MONITORS WILL BE REQUIRED TO MONITOR ABRASIVE BLASTING OPERATIONS AT THIS SITE. SEE SPECIAL PROVISION FOR "CONTAINMENT AND DISPOSAL OF LEAD PAINT CLEANING RESIDUES."

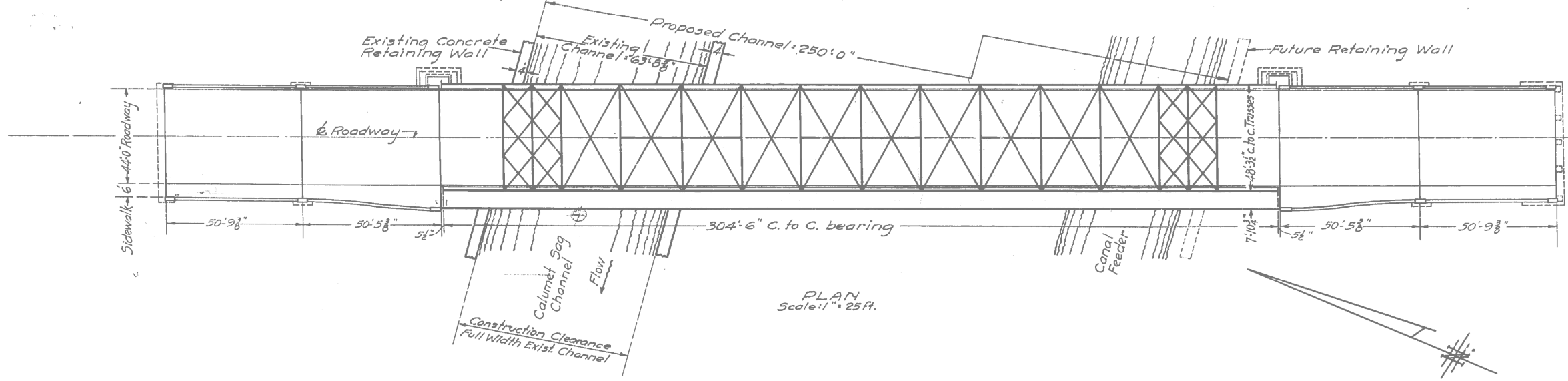
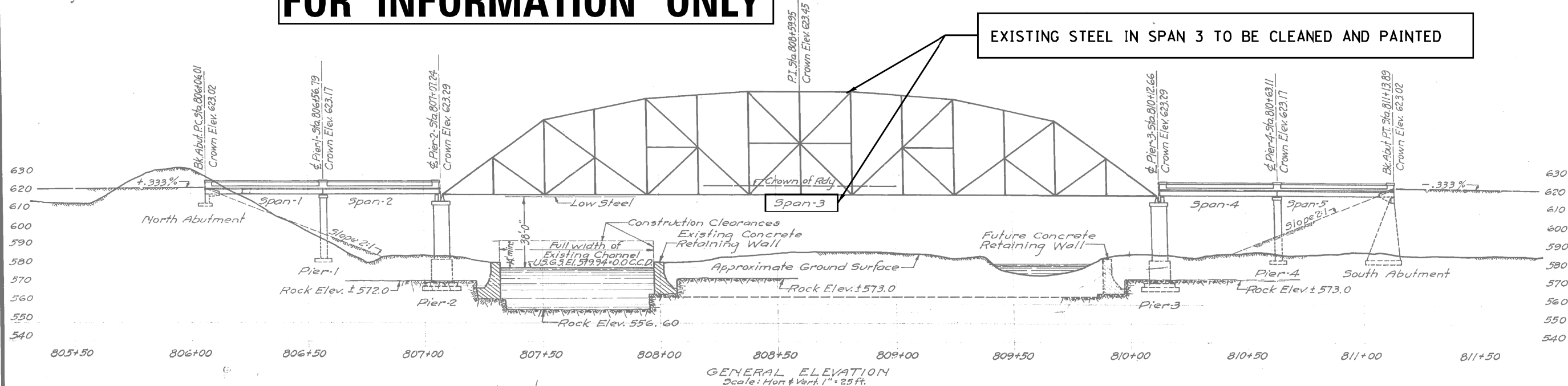
FILE NAME *	USER NAME * pyzanoskirb	DESIGNED -	REVISED -	STATE OF ILLINOIS DEPARTMENT OF TRANSPORTATION	INDEX OF SHEETS, STATE STANDARDS AND GENERAL NOTES			F.A.P. RTE.	SECTION	COUNTY	TOTAL SHEETS	SHEET NO.			
c:\work\pados\pyzanoskirb\037204	0113314.sht-pln.dgn	DRAWN -	REVISED -		SCALE:	SHEET	OF	SHEETS	STA.	TO STA.	344	545B-5-BP	COOK	24	2
Default	PLOT SCALE * 1/8"=1'-0"	CHECKED -	REVISED -		CONTRACT NO. 60X63										
	PLOT DATE * 2/6/2014	DATE -	REVISED -		ILLINOIS FED. AID PROJECT										

B.M.#87. 2" in No. edge of No. conc. wall of Sag Canal. 125' Lt. of G. Elev. 582.76
 B.M.#88. 2" in So. edge of So. conc. wall of Sag Canal. 125' Lt. of G. Elev. 582.74.
 B.M.#89. R.R. Spike in 12" Cottonwood, 100' Rt. of Sta. 810+55. Elev. 588.13
 No Existing Structures: Relocation.

STATE OF ILLINOIS
 DEPARTMENT OF PUBLIC WORKS & BUILDINGS
 DIVISION OF HIGHWAYS

FOR INFORMATION ONLY

EXISTING STEEL IN SPAN 3 TO BE CLEANED AND PAINTED

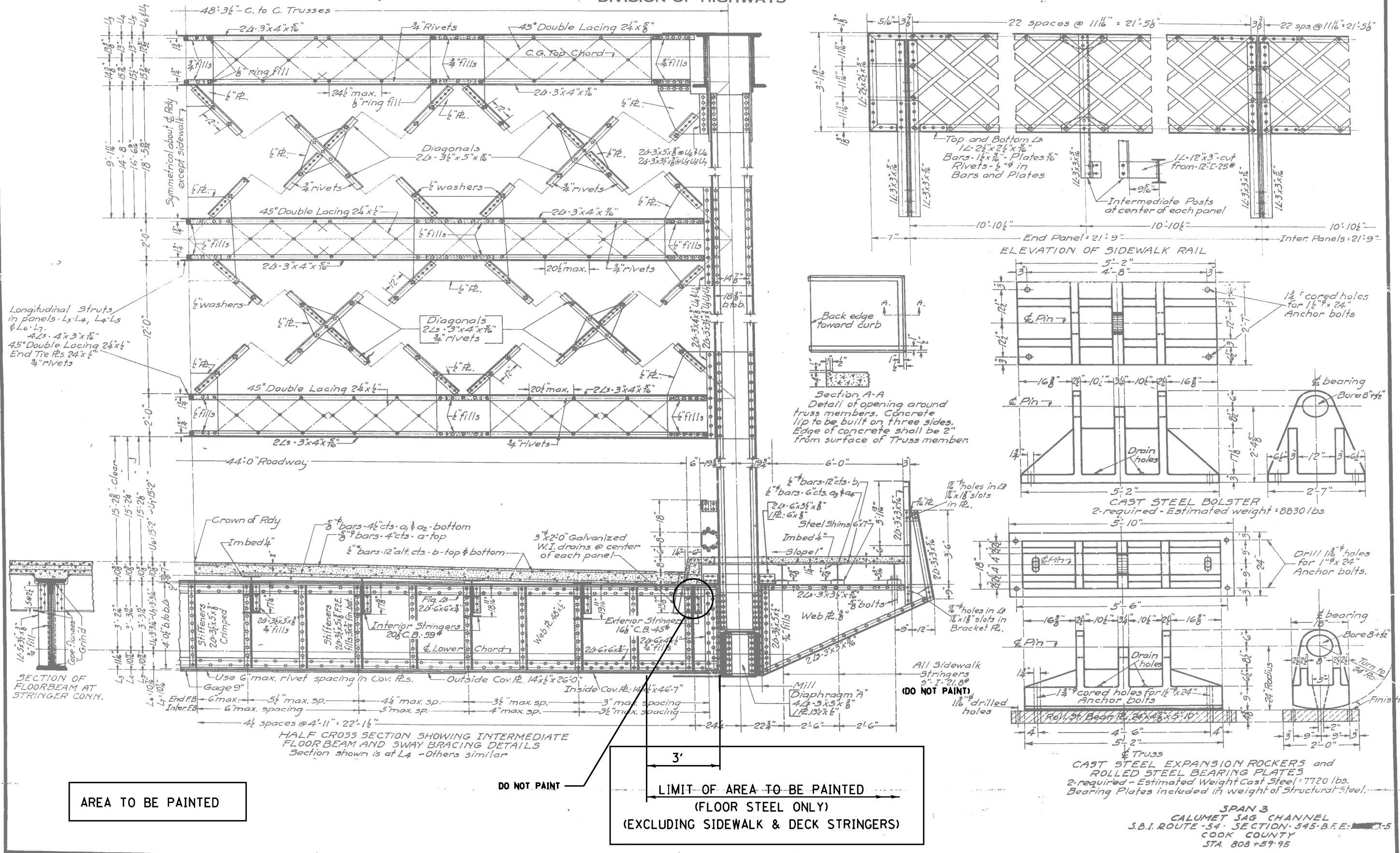


GENERAL ELEVATION
 CALUMET SAG CHANNEL
 S.B.I. ROUTE 54 -
 COOK COUNTY
 STA. 808+59.95
 SECTION 545-P

FILE NAME =	USER NAME = pyrzenowskirb	DESIGNED -	REVISED -	STATE OF ILLINOIS DEPARTMENT OF TRANSPORTATION	GENERAL ELEVATION (SN 016-0427) IL 83 (KINGERY HWY) OVER CAL SAG CHANNEL	F.A.P. RTE.	SECTION	COUNTY	TOTAL SHEETS	SHEET NO.	
ct:\pw\work\p\id\pyrzenowskirb\037204	ND115314-sht-plan.dgn	DRAWN -	REVISED -			344	545B-5-BP	COOK	24	4	
Default	PLOT SCALE = 100.0000' / in.	CHECKED -	REVISED -			CONTRACT NO. 60X63					
	PLOT DATE = 2/6/2014	DATE -	REVISED -			SCALE:	SHEET	OF	SHEETS	STA.	TO

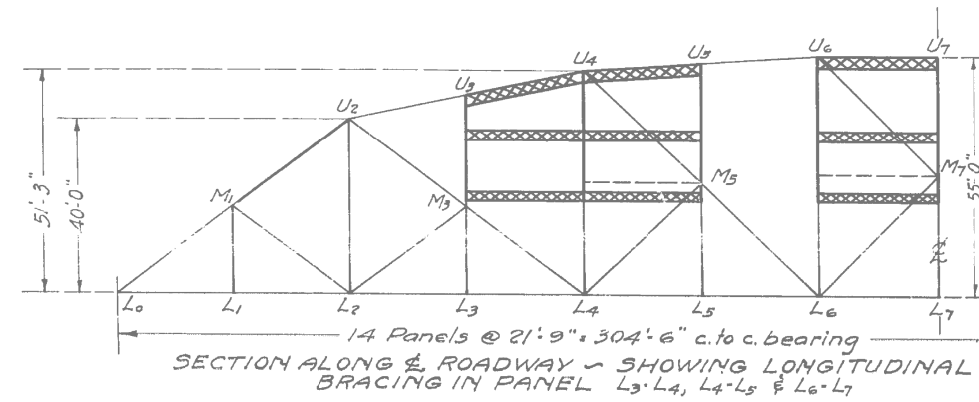
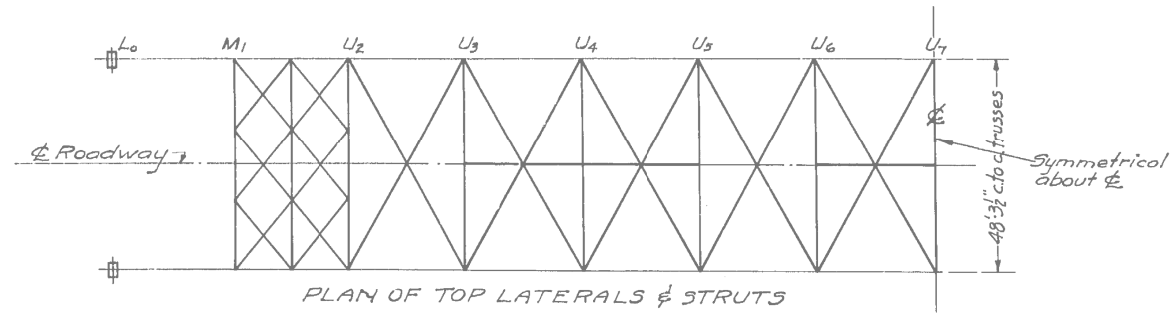
STATE OF ILLINOIS
DEPARTMENT OF PUBLIC WORKS & BUILDINGS
DIVISION OF HIGHWAYS

Scale: 7/8" = 1'-0"
Details: 1/2" = 1'-0"

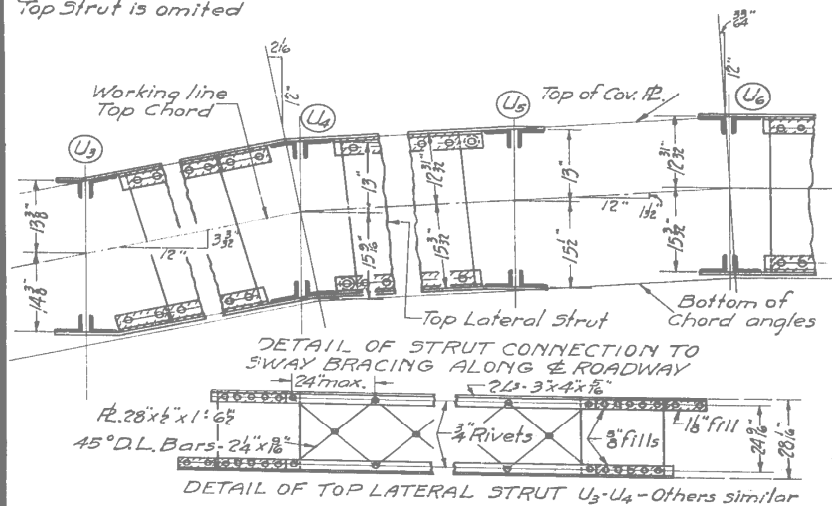
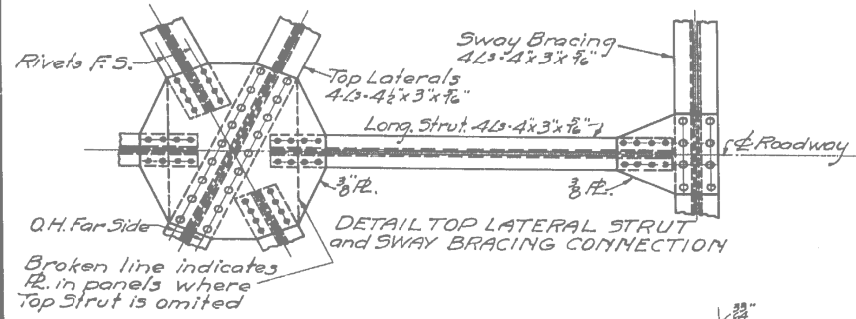


FILE NAME =	USER NAME = pyrzanowskirb	DESIGNED -	REVISED -	STATE OF ILLINOIS DEPARTMENT OF TRANSPORTATION	TRUSS DETAILS (SN 016-0427) IL 83 (KINGERY HWY) OVER CAL SAG CHANNEL	F.A.P. RTE.	SECTION	COUNTY	TOTAL SHEETS	SHEET NO.	
ct:\pwwork\pilot\pyrzanowskirb\d037204	ND15314-sht-plan.dgn	DRAWN -	REVISED -			344	545B-5-BP	COOK	24	7	
Default	PLOT SCALE = 100.0000 / 1 in.	CHECKED -	REVISED -			CONTRACT NO. 60X63					
	PLOT DATE = 2/7/2014	DATE -	REVISED -			ILLINOIS FED. AID PROJECT					

STATE OF ILLINOIS
DEPARTMENT OF PUBLIC WORKS & BUILDINGS
DIVISION OF HIGHWAYS



AREA TO BE PAINTED



SPAN 3
CALUMET SAG CHANNEL
S.B.I. ROUTE 54 - SECTION 545-B.F.E. - 1-5
COOK COUNTY
STA. 808 + 59.95

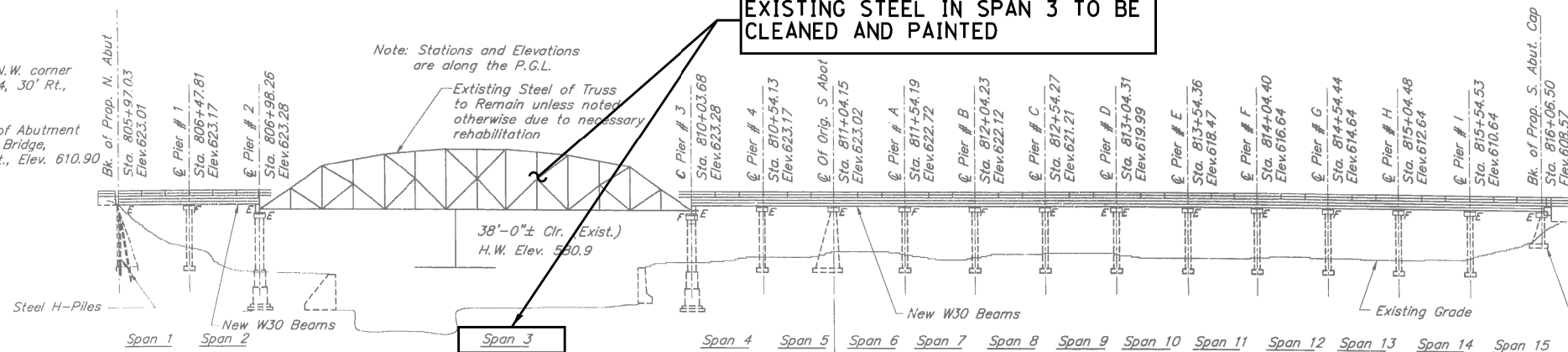
FILE NAME : c:\pwwork\pwwork\pyrzenowskirb\d037204	USER NAME : pyrzenowskirb	DESIGNED - DRAWN -	REVISED - REVISED -	STATE OF ILLINOIS DEPARTMENT OF TRANSPORTATION	TRUSS DETAILS (SN 016-0427) IL 83 (KINGERY HWY) OVER CAL SAG CHANNEL	F.A.P. RTE.	SECTION	COUNTY	TOTAL SHEETS	SHEET NO.
Default	PLOT SCALE = 100.0000' / 1 in.	CHECKED - DATE -	REVISED - REVISED -			344	545B-5-BP	COOK	24	8
					SCALE:	SHEET	OF	SHEETS	STA.	TO STA.
					ILLINOIS FED. AID PROJECT					

BM: Chiseled "□" on the N.W. corner of Bridge, Sta. 805+94, 30' Rt., Elev. 625.17.
Chiseled "□" on top of Abutment wall at S.W. corner of Bridge, Sta. 816+11.00, 29' Rt., Elev. 610.90

Note: Stations and Elevations are along the P.G.L.

Existing Steel of Truss to Remain unless noted otherwise due to necessary rehabilitation

EXISTING STEEL IN SPAN 3 TO BE CLEANED AND PAINTED

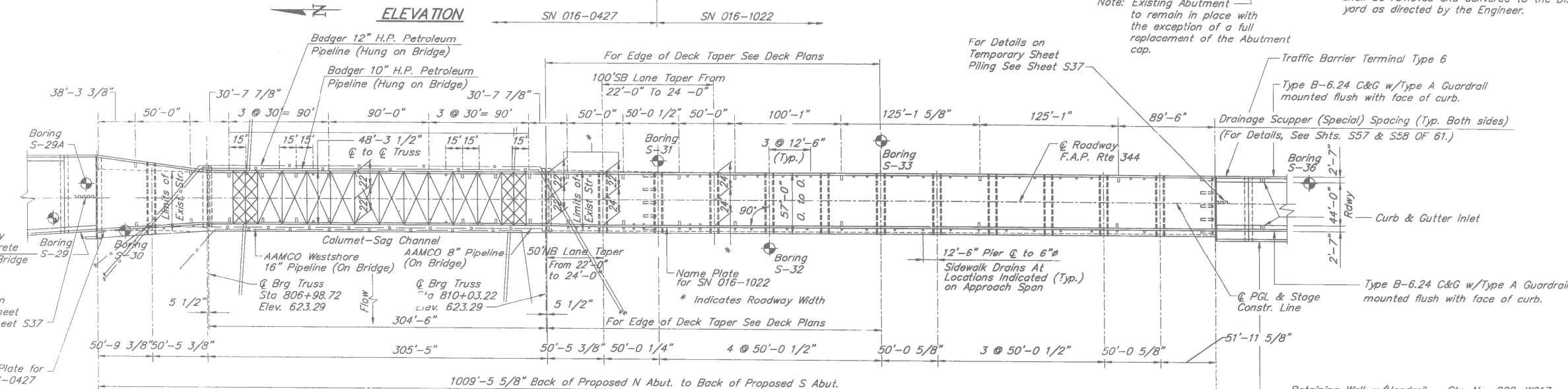


Existing Bridge: Built in 1934, S.N. 016-0427 & 016-1022
The Bridge has a total length of 1008.97' back to back of abutments. The superstructure consists of fourteen simple steel beam spans and one simple span through truss. The R.C. deck is 55.0 feet out to out in spans 5-15. The out to out width of the R.C. deck on span 2 and 4 varies from 54'-0" to 56'-10 1/2". The R.C. deck in all spans is 44.0 feet face to face of curbs and 7" thick and has a 1 1/2" bituminous overlay.

The substructure consists of 1 spill through abutment, 1 cantilever closed abutment and 14 piers.
The superstructure of simple beam spans is to be removed and the substructure is to be widened and repaired.
Traffic to be maintained utilizing stage construction.

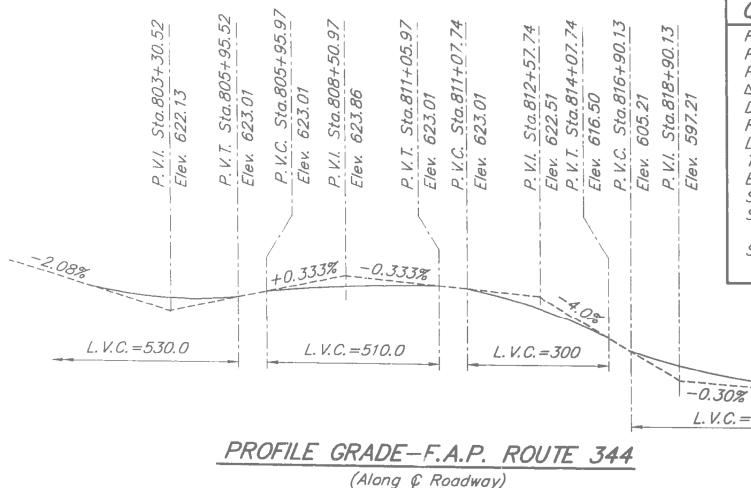
Salvage: The existing aluminum handrail on the approach spans shall be removed and delivered to the District maintenance yard as directed by the Engineer.

Note: Existing Abutment to remain in place with the exception of a full replacement of the Abutment cap.



FOR INFORMATION ONLY

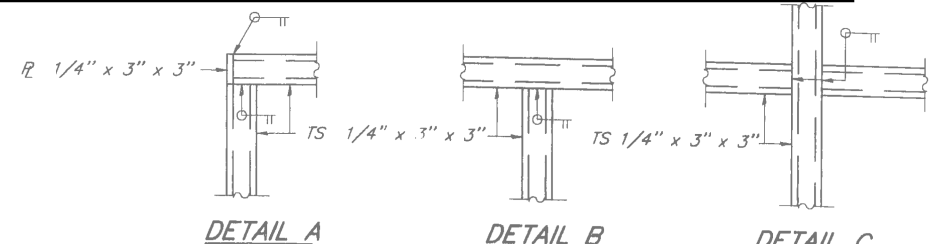
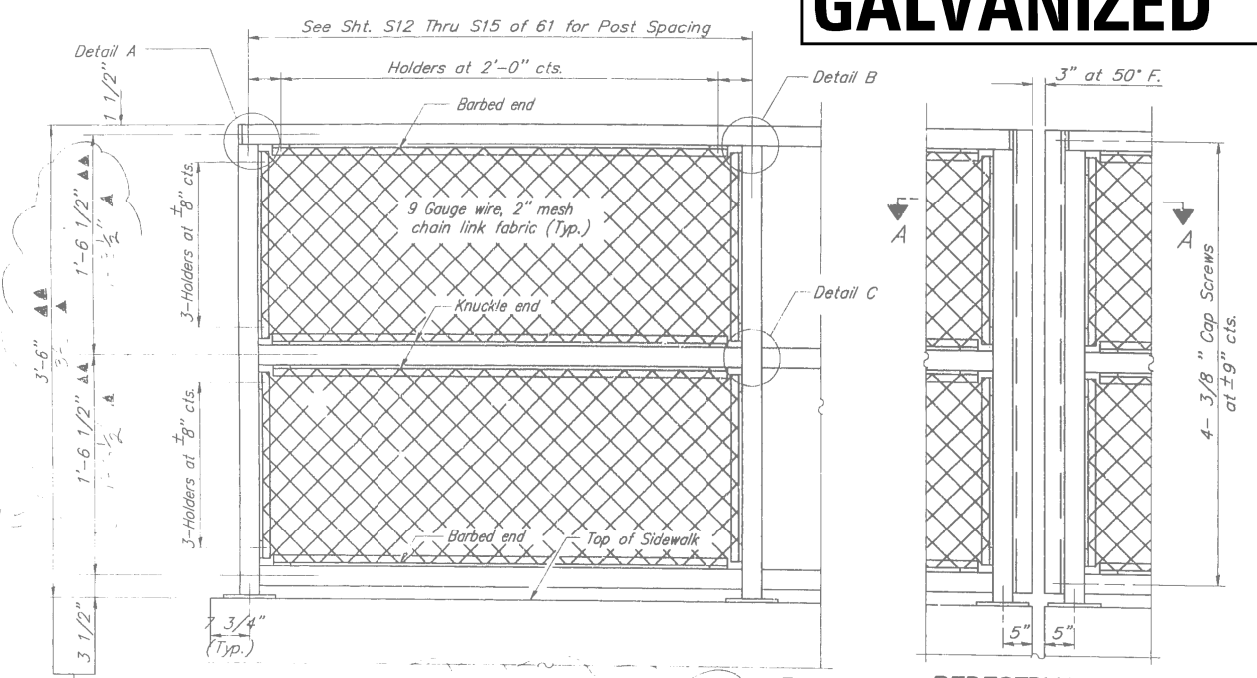
PLAN



CURVE DATA - ILL. RTE. 83	
P.I. STA.	802+82.26
P.C. STA.	799+93.15
P.T. STA.	805+64.38
Δ	21°-49'-04"
D	3'-49'-10"
R	1500.06'
L	571.23'
T	289.11'
E	27.61'
S.E.	0.032 FT\FT
S.E. ATTAINED FROM STA. 798+03.15 TO STA. 800+88.15	
S.E. ATTAINED FROM STA. 804+39.38 TO STA. 806+98.19	

FILE NAME =	USER NAME = pyrozenowskirb	DESIGNED -	REVISED -	STATE OF ILLINOIS DEPARTMENT OF TRANSPORTATION	GENERAL ELEVATION (SN 016-0427)				F.A.P. RTE.	SECTION	COUNTY	TOTAL SHEETS	SHEET NO.
ct:\pwork\pwork\pyrozenowskirb\037204	ND115314-sht-plan.dgn	DRAWN -	REVISED -		IL 83 (KINGERY HWY) OVER CAL SAG CHANNEL				344	545B-5-BP	COOK	24	9
Default	PLOT SCALE = 100.0000' / in.	CHECKED -	REVISED -		SCALE:				SN 016-0427		CONTRACT NO. 60X63		
	PLOT DATE = 2/7/2014	DATE -	REVISED -		SHEET OF SHEETS STA. TO STA.				ILLINOIS FED. AID PROJECT				

GALVANIZED RAIL NOT TO BE PAINTED



NOTES

Railing shall be in accordance with Section 509 of the Standard Specifications, except as noted.

The 9 gauge fabric ties shall be in accordance with Article 706.27(d) of the Standard Specifications.

Installation of the chain link fabric shall be in accordance with Section 664 of the Standard Specifications.

Hollow structural steel tubing shall conform to the requirements of ASTM designation A 500, Grade B, structural steel tubing.

All other steel shapes and plates shall conform to the requirements of AASHTO 270 Grade 36.

The chain link fabric shall be placed along Bicycle Side as shown on Section A-A.

Stretcher bars shall be used at all four sides of each panel.

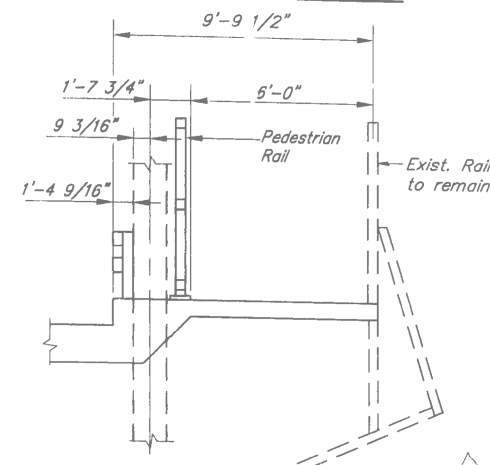
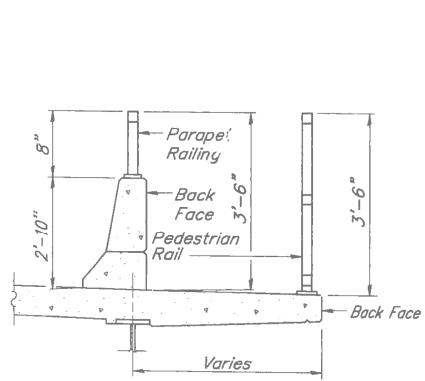
All posts, railing, splices, anchor devices, and bent plates shall be galvanized after shop fabrication in accordance with AASHTO M-111 and ASTM A-385. All bolts, nuts, and washers shall be galvanized in accordance with AASHTO M-232.

Vent holes for galvanizing shall be placed in the posts and rails at locations that will not allow the accumulation of moisture in the members.

The chain link fabric shall conform to the requirements of Article 706.27 (a), (1), (2), or (3) of the Standard Specifications.

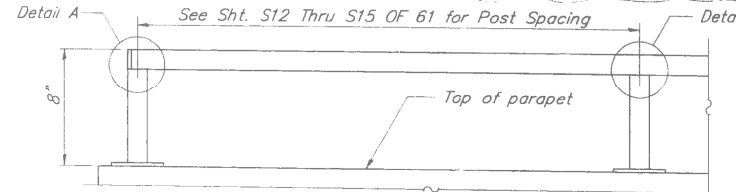
Rail Posts shall be installed vertical.

The Railing shall be paid for at the Contract Unit Price per foot for "Parapet Railing (Special)" or "Pedestrian Railing (Special)" as required.



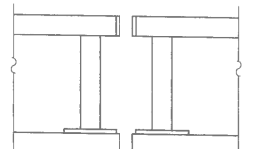
PEDESTRIAN RAIL

▲ Dimensions per SN 016-W017, 016-W018, & 016-W592
▲ Dimensions per Cal Sag Bridge SN 016-0927 & 016-1022



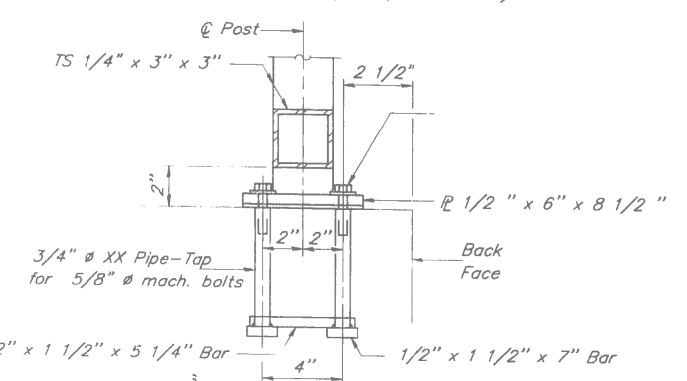
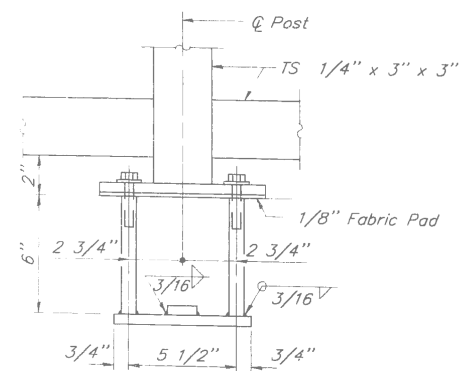
PARAPET RAILING

ELEVATION (Inside Face)



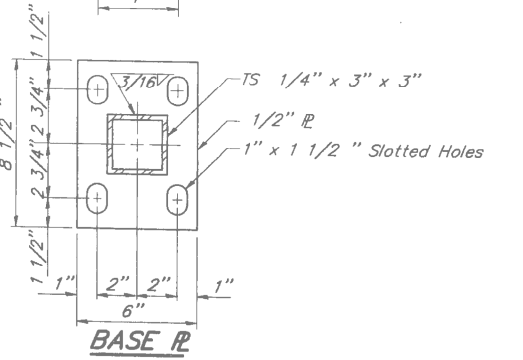
PARAPET RAILING

ELEVATION (At Expansion Joint)



*ANCHOR BOLT DETAILS

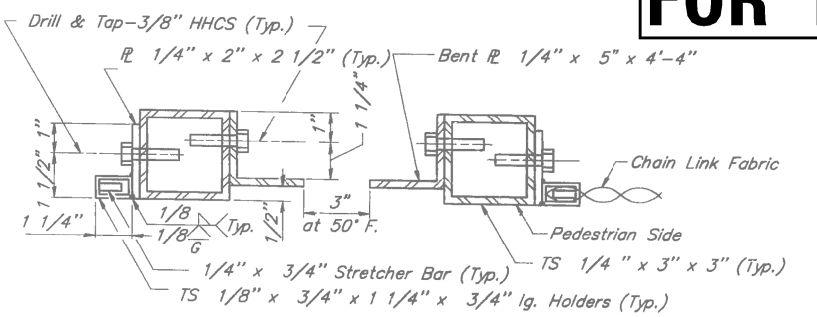
* Details shown are for Pedestrian Railing, Details for Parapet Railing are similar, Except the bottom longitudinal TS does not exist.



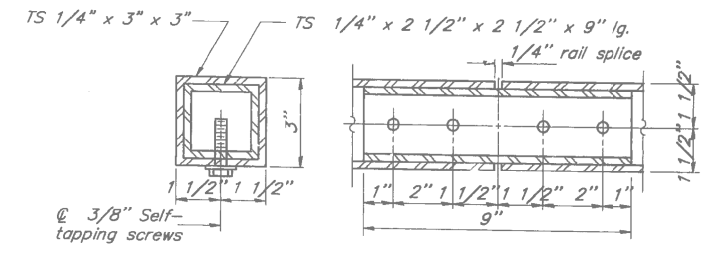
SECTION THRU SIDEWALK OFF TRUSS

SECTION THRU SIDEWALK ON TRUSS

FOR INFORMATION ONLY



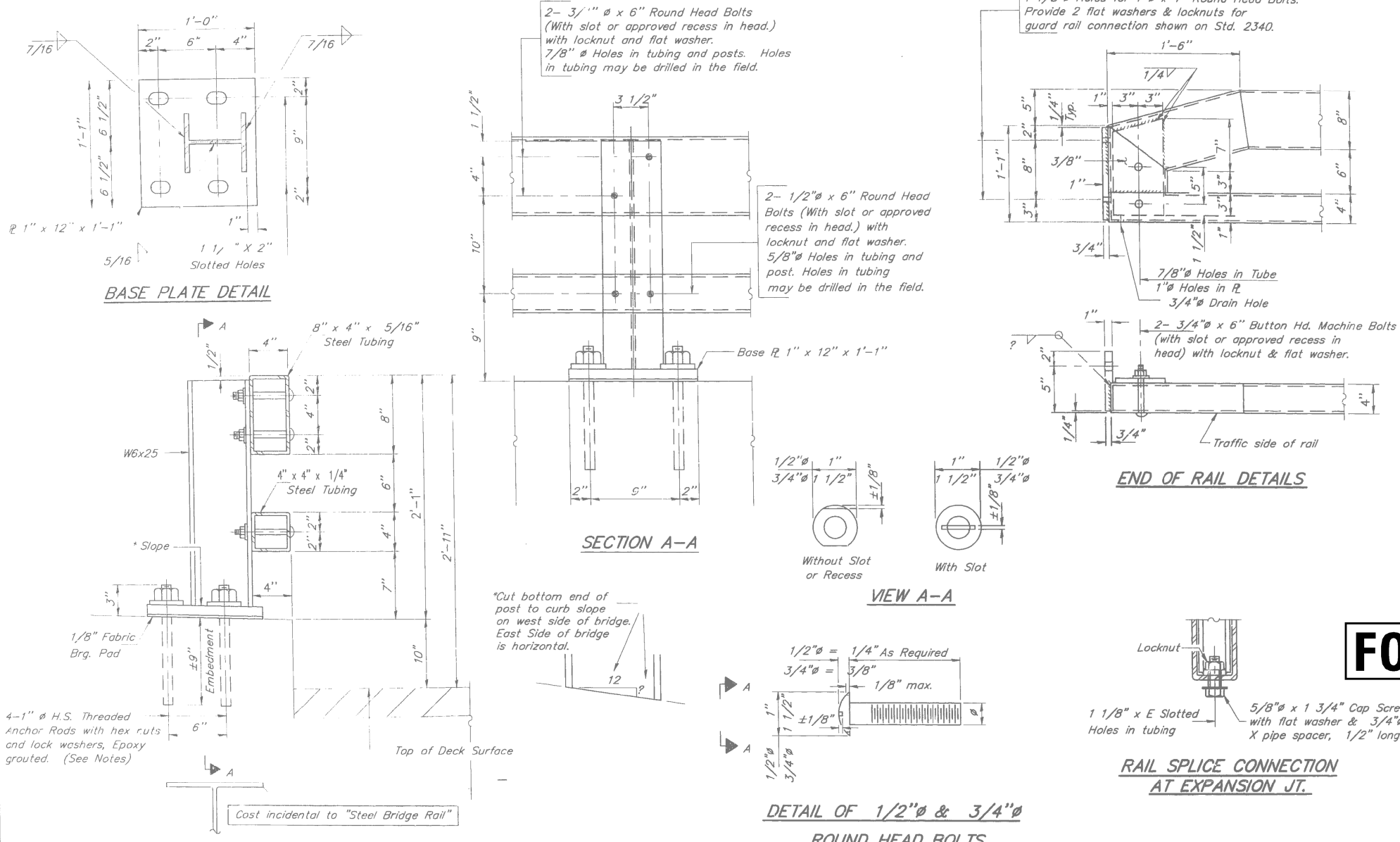
SECTION A-A



RAIL SPLICE

FILE NAME = c:\pwork\pwork\pyrzenowskirb\037204	USER NAME = pyrzenowskirb	DESIGNED -	REVISED -	STATE OF ILLINOIS DEPARTMENT OF TRANSPORTATION	PEDESTRIAN RAIL DETAILS - TRUSS REHABILITATION (SN 016-0427) IL 83 (KINGERY HWY) OVER CAL SAG CHANNEL	F.A.P. RTE.	SECTION	COUNTY	TOTAL SHEETS	SHEET NO.
	NDI15314-sht-plan.dgn	DRAWN -	REVISED -			344	545B-5-BP	COOK	24	10
Default	PLOT SCALE = 100.0000' / 1in.	CHECKED -	REVISED -	SCALE: SHEET OF SHEETS STA. TO STA.		SN 016-0427		CONTRACT NO. 60X63		
	PLOT DATE = 2/7/2014	DATE -	REVISED -			ILLINOIS FED. AID PROJECT				

GALVANIZED RAIL NOT TO BE PAINTED



NOTES

Hollow structural steel tubing shall conform to the requirements of ASTM designation A-500, Grade B, Structural Steel Tubing and shall meet the longitudinal CWN requirements of 15 ft. lbs. at 0° F.

All other steel shapes and plates shall conform to the requirements of AASHTO M-270 Grade 36 except posts shall conform to AASHTO M-270, Grade 50.

Bolts, cap screws and nuts shall conform to the requirements of ASTM designation A-307 except that threaded rods, nuts and washers shall conform to AASHTO M-164.

All bolts, nuts, cap screws, washers and lock washers shall be galvanized in accordance with AASHTO M-232.

All posts, railing, rail splices and anchor rods shall be galvanized after shop fabrication in accordance with AASHTO M-111 and ASTM A-385. Galvanized rail shall not be painted.

Railing shall be in accordance with Section 509 of the Standard Specifications, except as noted, and will be paid for at the contract unit price per foot for STEEL BRIDGE RAIL.

All field drilled holes shall be coated with an approved zinc rich paint before erection.

Posts shall not be located closer than 1'-3" to an existing bridge expansion joint or end of bridge.

STEEL BRIDGE RAIL expansion joint shall be provided between any two (2) posts which span a bridge expansion joint. Bolts located at expansion joint shall be provided with locknuts and shall be tightened only to a point that will allow railing movement.

Provide one 1/8" and two 1/16" steel shims for 25% of the posts. Shims shall be similar to base plates in size and holes.

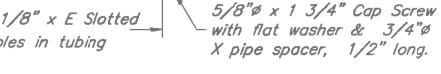
Expansion joint width shall be "D" at 50° F and shall be adjusted for other temperatures according to Article 503.10(c) of the Standard Specifications.

The Contractor shall use the capsule or the adhesive cartridge type anchor rods that have been previously tested and given a prior approval by the Department. The Contractor shall install these anchor rods in pre-drilled holes in accordance with the manufacturer's recommendations and procedures.

The capsule or the adhesive cartridge shall be a sealed glass capsule or a sealed glass adhesive cartridge containing premeasured amounts of the adhesive chemical.

Nuts for 1" threaded anchor rods connecting the base plate to the concrete shall be tightened to a snug fit and given an additional 1/8 turn.

FOR INFORMATION ONLY



RAIL SPLICE CONNECTION AT EXPANSION JT.

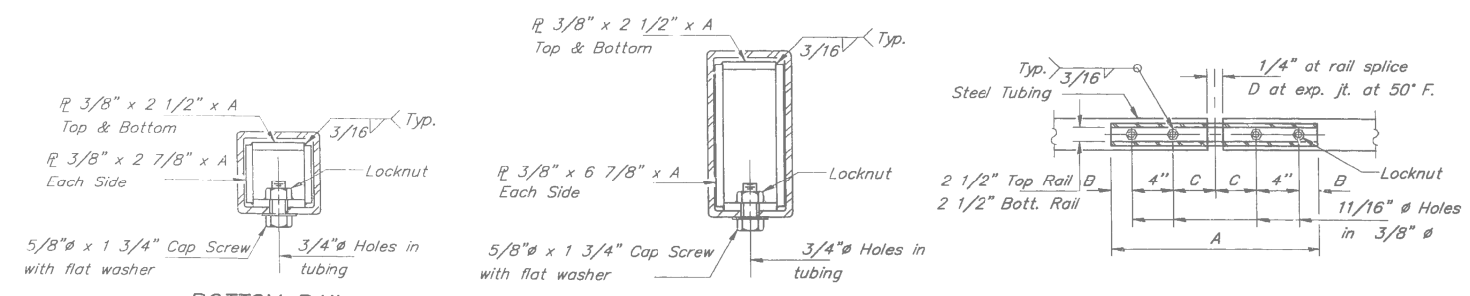
SPLICE DIMENSIONS

T	D	A	B	C	E
≤ 4"	2 1/2"	1'-8"	2"	4"	2 1/2"
> 4" ≤ 6 1/2"	3 3/4"	2'-0"	2 1/2"	5 1/2"	3 1/2"
> 6 1/2" ≤ 9"	5"	2'-4"	3 1/2"	6 1/2"	9"
> 9" ≤ 13"	7"	2'-10"	4 1/2"	8 1/2"	11"
Rail Splice	1/4"	1'-8"	2"	4"	

T = Total movement at expansion joint as shown on the design plans.

PLAN-BOTT. SPLICE AT TYPICAL

TYPE 2399 STEEL BRIDGE RAIL CURB MOUNTED

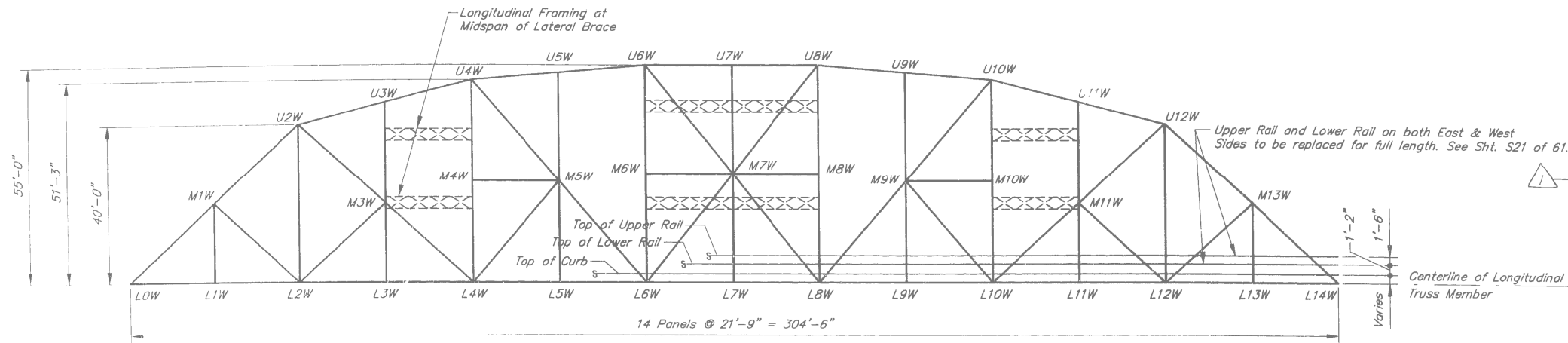


BOTTOM RAIL

TOP RAIL

SECTIONS AT RAIL SPLICE

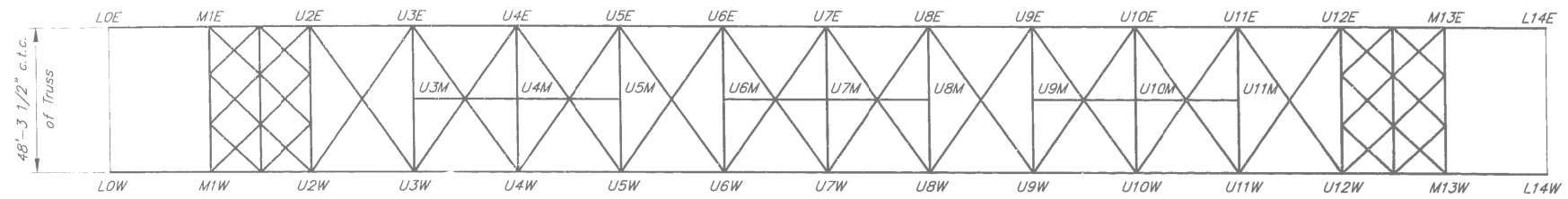
FILE NAME =	USER NAME = pyrzenowskirb	DESIGNED -	REVISED -	STATE OF ILLINOIS DEPARTMENT OF TRANSPORTATION	BRIDGE RAIL CURB MOUNTED - TRUSS REHABILITATION (SN 016-0427) IL 83 (KINGERY HWY) OVER CAL SAG CHANNEL	F.A.P. RTE.	SECTION	COUNTY	TOTAL SHEETS	SHEET NO.	
ct:\pwk\work\pwid01\pyrzenowskirb\d037204	ND115314-shr-plan.dgn	DRAWN -	REVISED -			344	545B-5-BP	COOK	24	11	
Default	PLOT SCALE = 100.0000' / 1"	CHECKED -	REVISED -			CONTRACT NO. 60X63					
	PLOT DATE = 2/7/2014	DATE -	REVISED -			ILLINOIS FED. AID PROJECT					



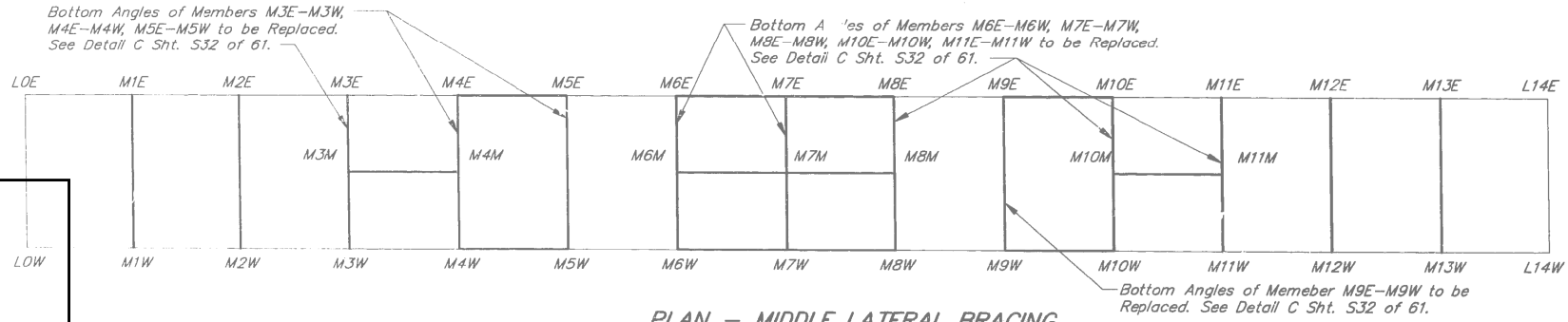
ELEVATION - WEST TRUSS
(East Truss Typical)
Note: All lines represent Centerlines of Truss Members

GENERAL NOTES

- All Structural Steel to remain shall be painted as per General Note 6 on sheet S-2.
- Exterior underdeck stringers will be removed and replaced in full by W21x57 wide flange beams.
- All new fasteners shall be high strength bolts. Holes shall be subpunched or subdrilled 11/16" and reamed in the field to 13/16" for 3/4" bolts, unless otherwise noted. Holes shall be subpunched or subdrilled 13/16" and reamed in the field to 15/16" for 7/8" bolts, unless otherwise noted.
- Upper and lower rails will be paid for by the bid item STEEL BRIDGE RAIL. Exterior stringers of the truss will be paid for by the bid item FURNISHING AND ERECTING STRUCTURAL STEEL. All other repair work will be included in STRUCTURAL STEEL REPAIR shown below.

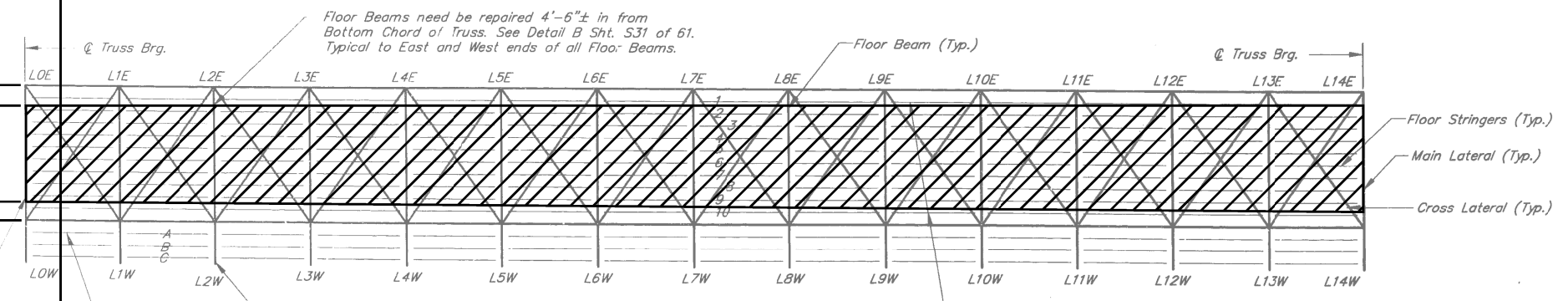


PLAN - UPPER LATERAL MEMBERS



PLAN - MIDDLE LATERAL BRACING
NOTE: Two Mid-Frame members exist between Laterals 3&4, 6&7, 7&8, & 10&11. (See Elevation)

PORTION OF FLOOR STEEL NOT TO BE PAINTED



FLOOR PLAN

LEGEND

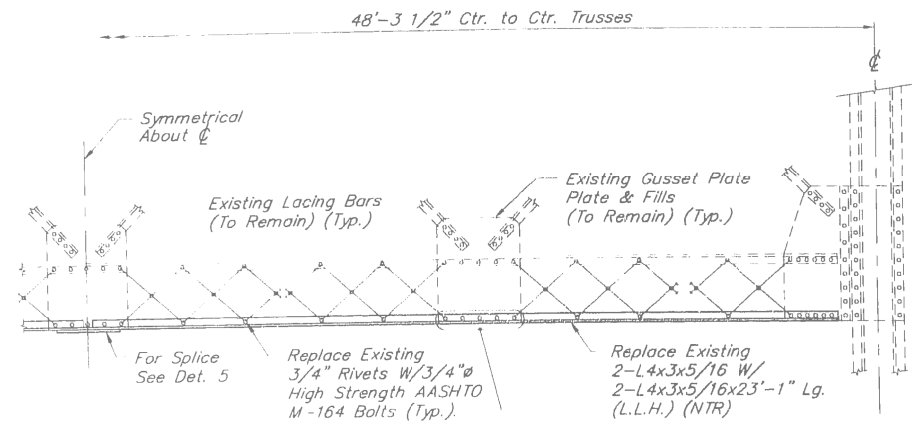
HATCHED AREA DESIGNATE PORTION OF FLOOR STEEL TO BE OMITTED.

Refers to Jt. Lateral Location
E = East
M = Middle
W = West

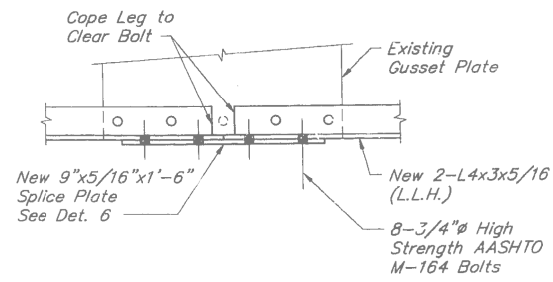
Refers to Jt. Vertical Location
U = Upper
M = Middle
L = Lower

Refers to Jt. Longitudinal Location
0 = North End
11 = South

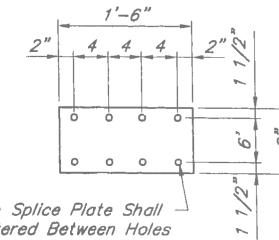
TAMERAN				STATE OF ILLINOIS DEPARTMENT OF TRANSPORTATION				TRUSS REHABILITATION - DETAILS (SN 016-0427) IL 83 (KINGERY HWY) OVER CAL SAG CHANNEL				CONTRACT NO. 60X63	
FILE NAME =	USER NAME = pyzranowskirb	DESIGNED -	REVISED -	F.A.P. RTE.	SECTION	COUNTY	TOTAL SHEETS	SHEET NO.					
ct:\pwork\p10\td\pyzranowskirb\037204	NDI15314-sht-plan.dgn	DRAWN -	REVISED -	344	545B-5-BP	COOK	24	12					
Default	PLOT SCALE = 100.0000' / in.	CHECKED -	REVISED -	SCALE:	SHEET	OF	SHEETS	STA.	TO	STA.			
	PLOT DATE = 2/7/2014	DATE -	REVISED -								ILLINOIS FED. AID PROJECT		



DETAIL C



DETAIL 5

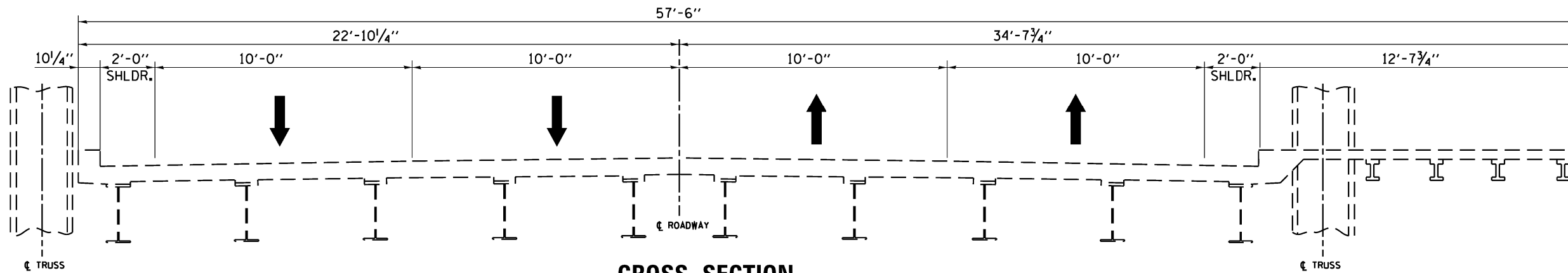


Holes in Splice Plate Shall be Centered Between Holes in Vertical Leg of Bottom Flange Angles at Center of Gusset Plate

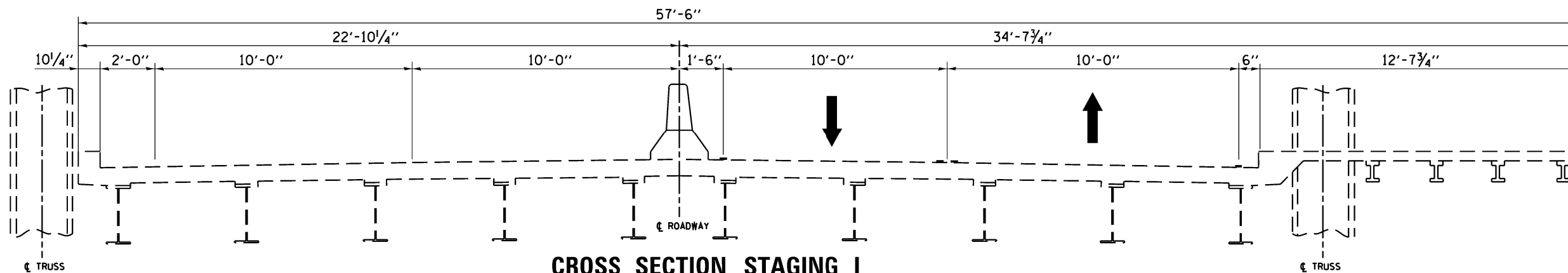
DETAIL 6

AREA TO BE PAINTED

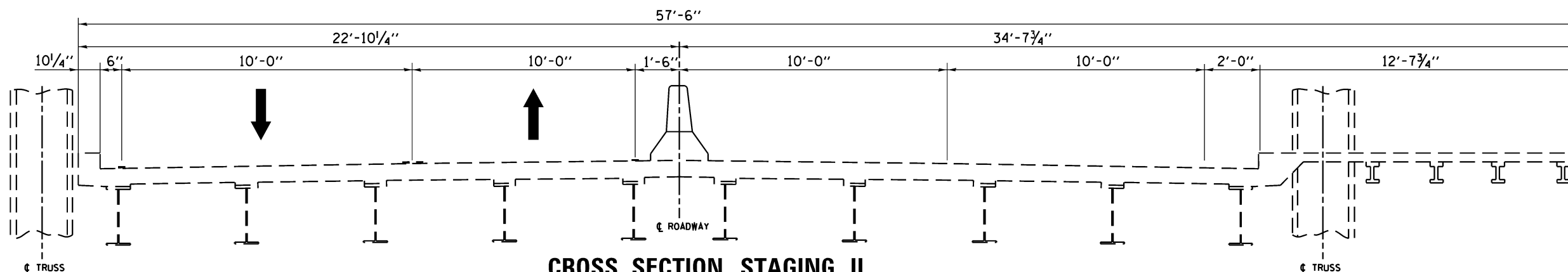
FILE NAME =	USER NAME = pyrzezowski	DESIGNED -	REVISED -	STATE OF ILLINOIS DEPARTMENT OF TRANSPORTATION	TRUSS REHABILITATION - DETAILS (SN 016-0427) IL 83 (KINGERY HWY) OVER CAL SAG CHANNEL	F.A.P. RTE.	SECTION	COUNTY	TOTAL SHEETS	SHEET NO.	
ct:\pwork\pwork\pyrzezowski\037204	ND115314-sht-plan.dgn	DRAWN -	REVISED -			344	545B-5-BP	COOK	24	13	
Default	PLOT SCALE = 100.0000' / in.	CHECKED -	REVISED -			CONTRACT NO. 60X63					
	PLOT DATE = 2/7/2014	DATE -	REVISED -			ILLINOIS FED. AID PROJECT					



CROSS SECTION
(LOOKING SOUTH)

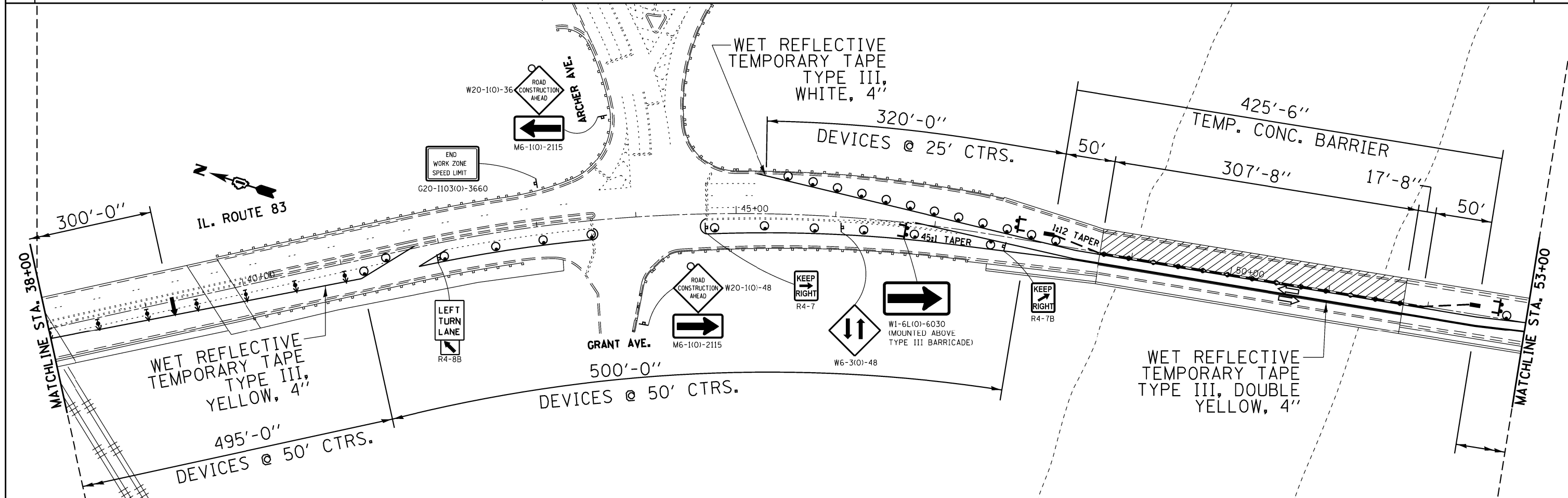
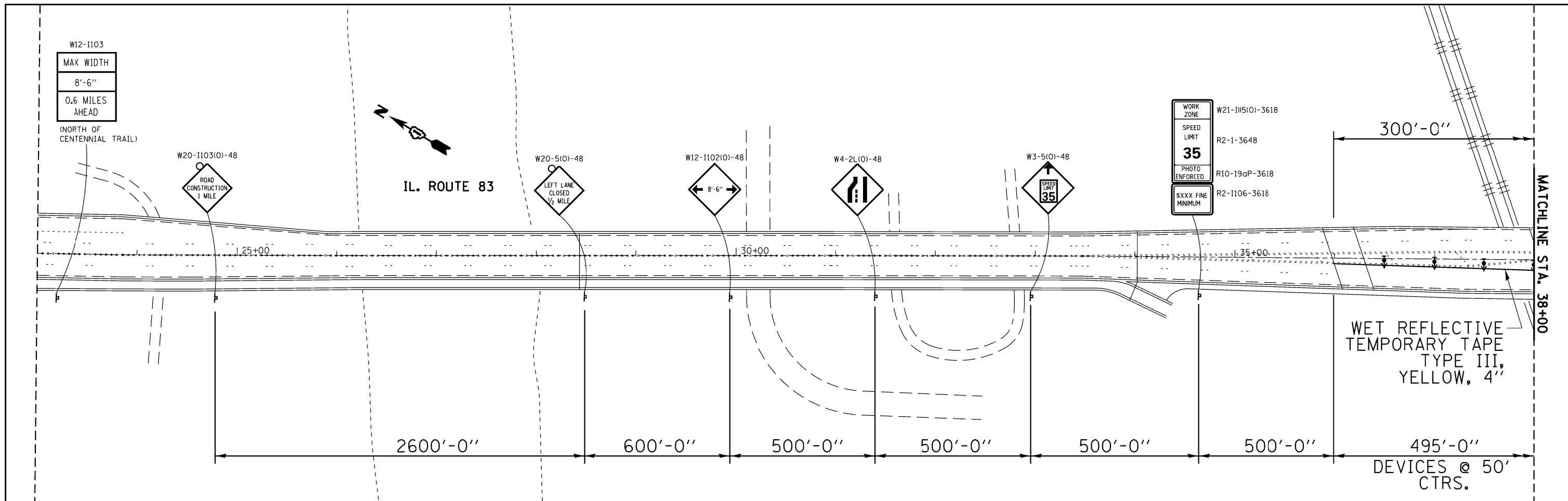


CROSS SECTION STAGING I
(LOOKING SOUTH)

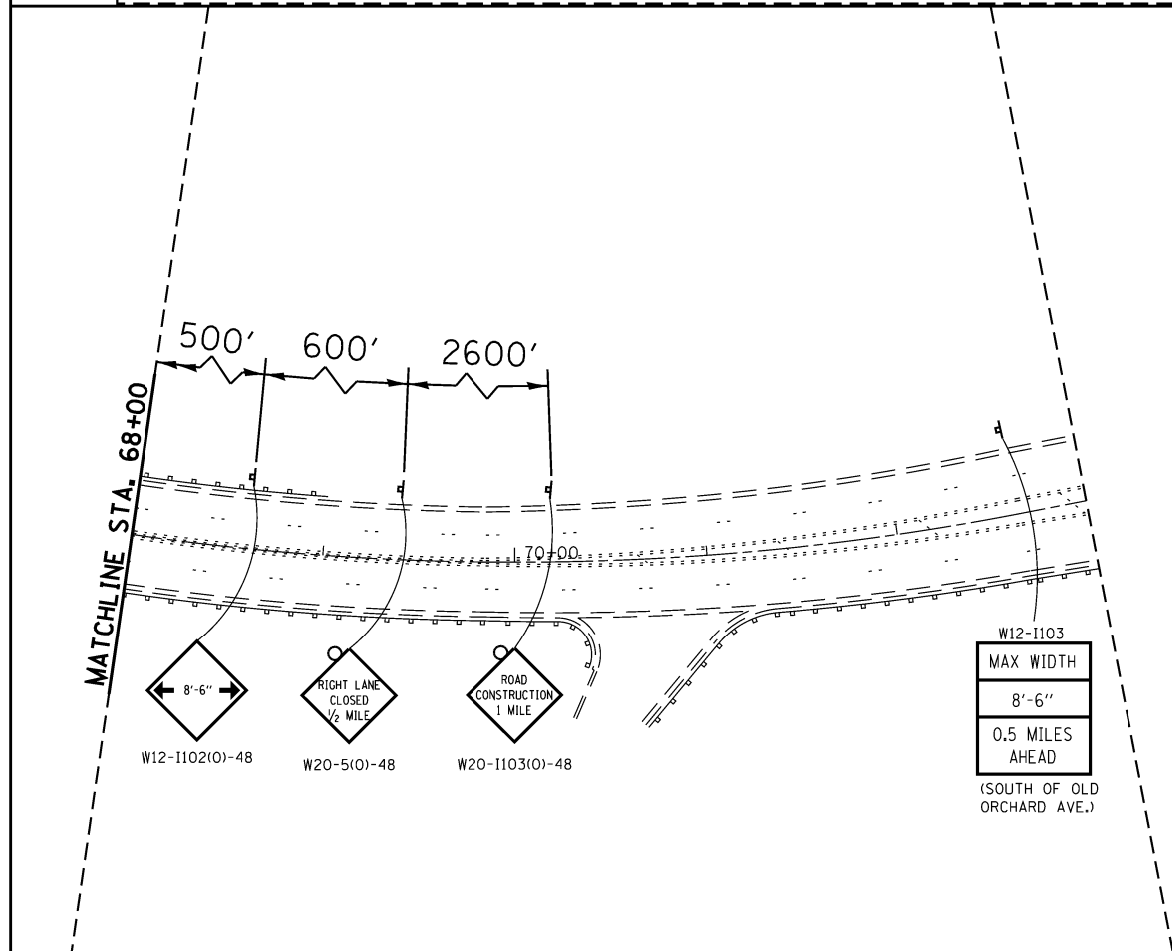
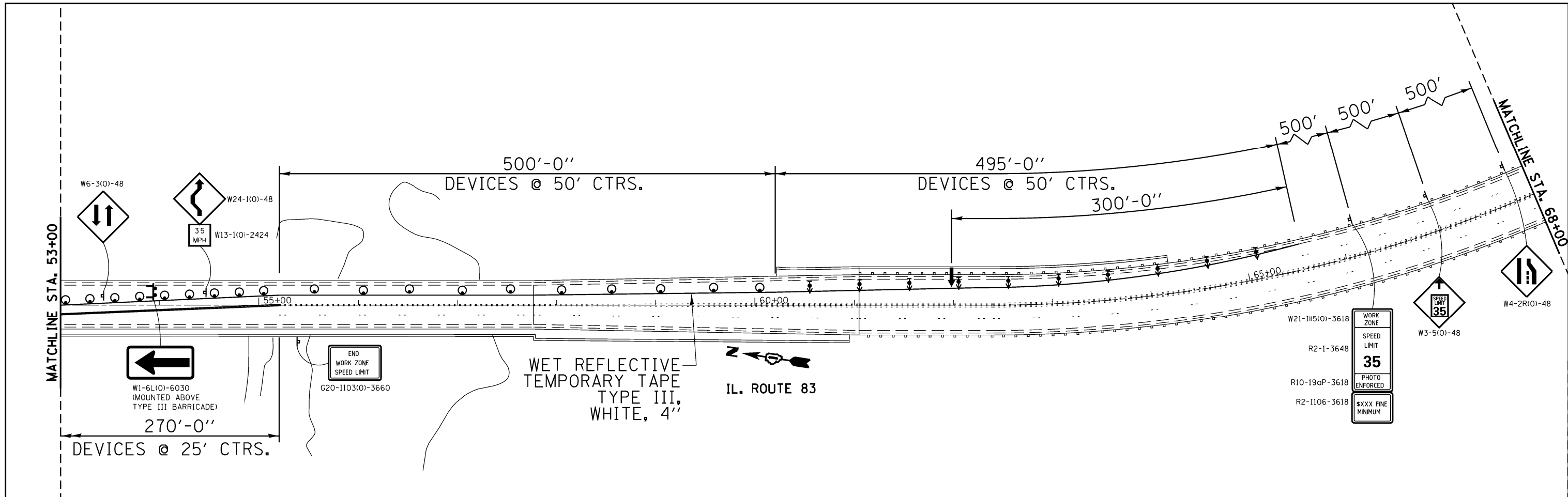


CROSS SECTION STAGING II
(LOOKING SOUTH)

FILE NAME =	USER NAME = pyrzenowskirb	DESIGNED -	REVISED -	STATE OF ILLINOIS DEPARTMENT OF TRANSPORTATION	TRAFFIC CONTROL CROSS SECTIONS IL 83 OVER CAL SAG CHANNEL (SN 016-0427)				F.A.P. RTE.	SECTION	COUNTY	TOTAL SHEETS	SHEET NO.
ct:\pwork\pwork\pyrzenowskirb\037204	ND115314-sht-plan.dgn	DRAWN -	REVISED -		344	545B-5-BP	COOK	24	14				
Default	PLOT SCALE = 100.0000' / in.	CHECKED -	REVISED -		CONTRACT NO. 60X63				ILLINOIS FED. AID PROJECT				
	PLOT DATE = 2/6/2014	DATE -	REVISED -		SCALE:	SHEET	OF	SHEETS	STA.	TO	STA.		



FILE NAME =	USER NAME = pyrzenowskirb	DESIGNED -	REVISED -	STATE OF ILLINOIS DEPARTMENT OF TRANSPORTATION	IL. ROUTE 83 (KINGERY HWY) OVER CAL-SAG CHANNEL STAGE I TRAFFIC CONTROL AND PROTECTION PLAN	F.A.P. RTE.	SECTION	COUNTY	TOTAL SHEETS	SHEET NO.	
ct:\pwr\work\pwr\pyrzenowskirb\d037204	NDI15314-sht.pln.dgn	DRAWN -	REVISED -			344	545B-5-BP	COOK	24	15	
Default	PLOT SCALE = 100.0000' / in.	CHECKED -	REVISED -			CONTRACT NO. 60X63					
	PLOT DATE = 2/6/2014	DATE -	REVISED -			ILLINOIS FED. AID PROJECT					



LEGEND

- BI-DIRECTIONAL BARRIER WALL MARKERS, TYPE C (CRYSTAL)
- TYPE III BARRICADE
- DRUM WITH STEADY BURN MONO-DIRECTIONAL LIGHT
- WORK ZONE
- IMPACT ATTENUATOR, TEMPORARY, NON-REDIRECTIVE, TEST LEVEL 3
- ARROW BOARD
- TEMPORARY CONCRETE BARRIER
- DIRECTION INDICATOR BARRICADE WITH STEADY BURN MONODIRECTIONAL LIGHT @ 50' SPACING

NOTES:

— TYPE III BARRICADES TO BE PLACED WHEN NO WORK IS BEING PERFORMED

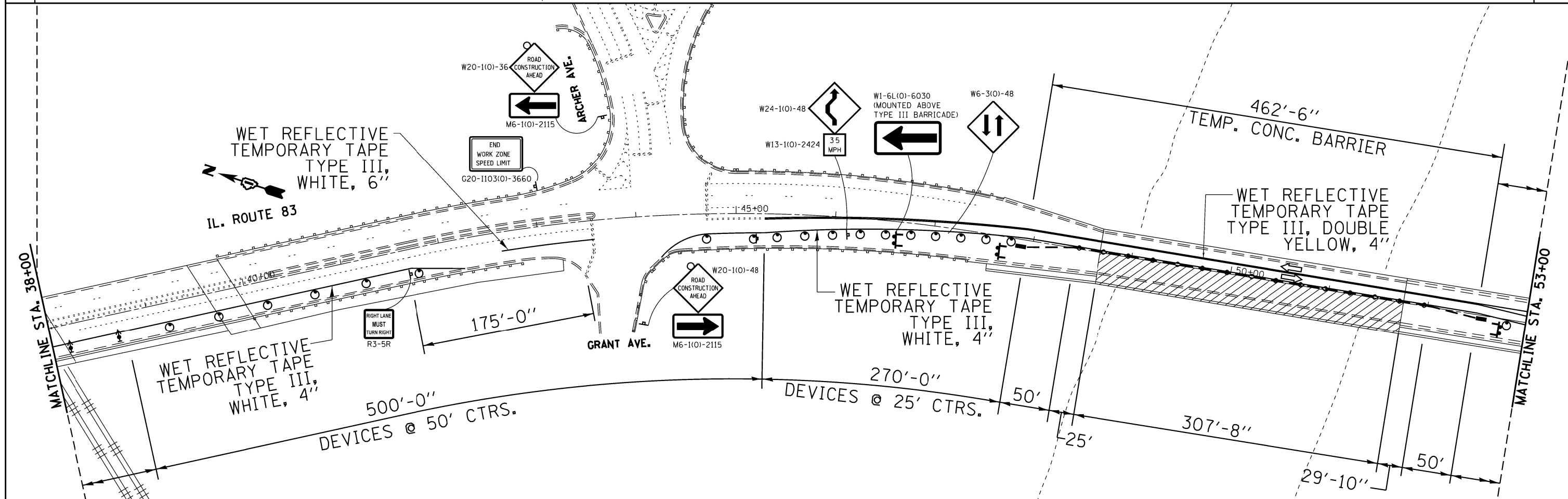
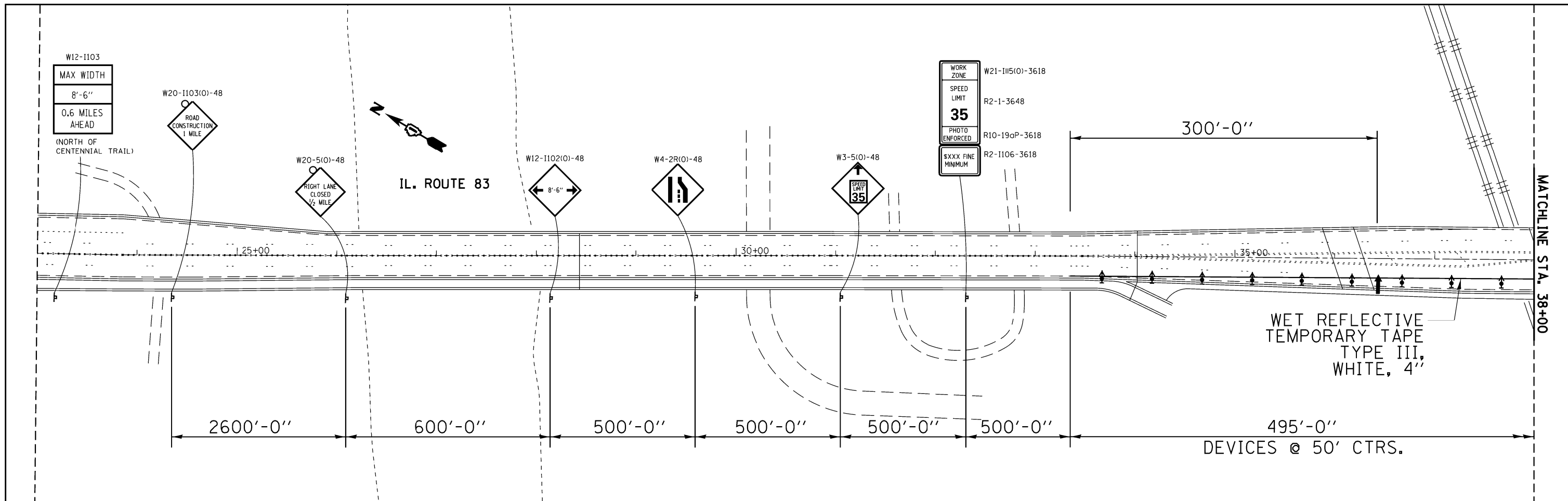
FILE NAME =	USER NAME = pyrzanowskirb	DESIGNED -	REVISED -
ct:\pwr\work\pilot\pyrzanowskirb\d037204	NDI15314-sht-plan.dgn	DRAWN -	REVISED -
Default	PLOT SCALE = 100.0000' / in.	CHECKED -	REVISED -
	PLOT DATE = 2/6/2014	DATE -	REVISED -

**STATE OF ILLINOIS
DEPARTMENT OF TRANSPORTATION**

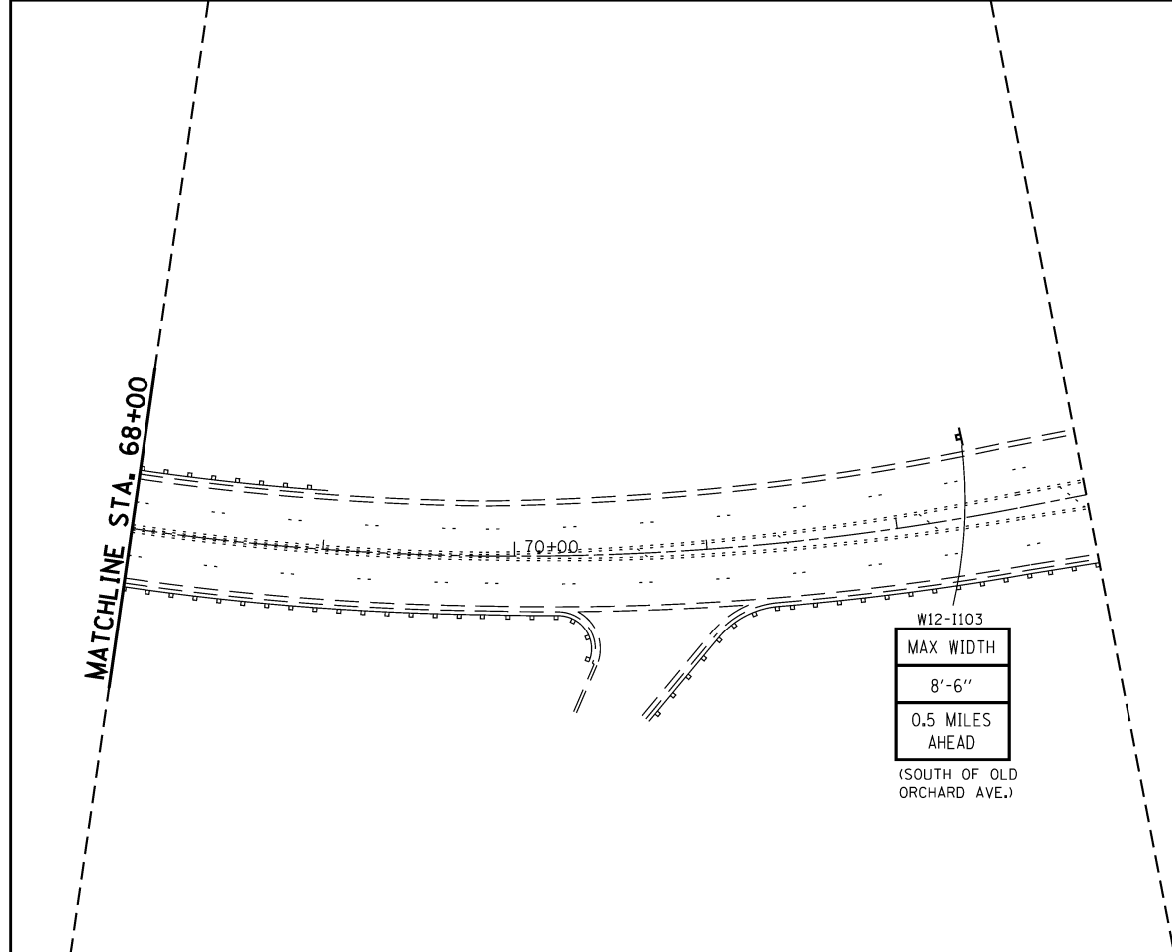
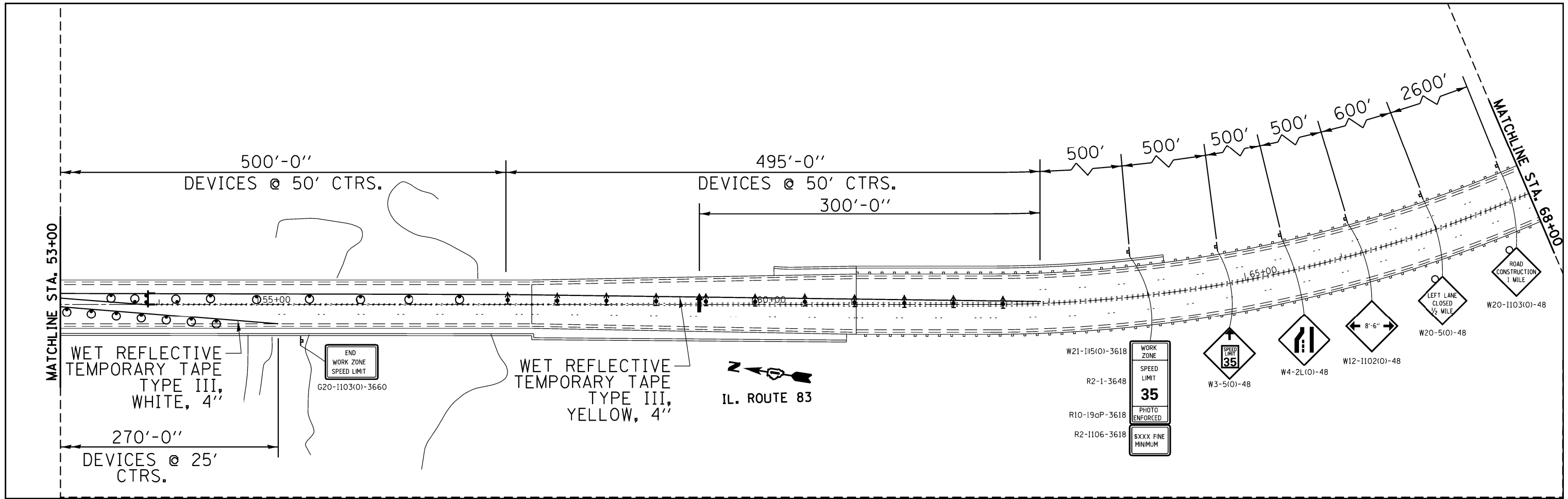
**IL. ROUTE 83 (KINGERY HWY) OVER CAL-SAG CHANNEL
STAGE I TRAFFIC CONTROL AND PROTECTION PLAN**

SCALE: = SHEET OF SHEETS STA. TO STA.

F.A.P. RTE.	SECTION	COUNTY	TOTAL SHEETS	SHEET NO.
344	545B-5-BP	COOK	24	16
CONTRACT NO. 60X63				
ILLINOIS FED. AID PROJECT				



FILE NAME = c:\pwwork\pido\pyrzenowskirb\d037204	USER NAME = pyrzenowskirb ND115314-sht-plan.dgn	DESIGNED - DRAWN -	REVISED - REVISED - REVISED - REVISED -	STATE OF ILLINOIS DEPARTMENT OF TRANSPORTATION		IL. ROUTE 83 (KINGERY HWY) OVER CAL-SAG CHANNEL STAGE II TRAFFIC CONTROL AND PROTECTION PLAN		F.A.P. RTE. 344	SECTION 545B-5-BP	COUNTY COOK	TOTAL SHEETS 24	SHEET NO. 17
Default	PLOT SCALE = 100.0000' / in. PLOT DATE = 2/6/2014	CHECKED - DATE -	CONTRACT NO. 60X63 ILLINOIS FED. AID PROJECT									



LEGEND

- ◇ BI-DIRECTIONAL BARRIER WALL MARKERS, TYPE C (CRYSTAL)
- † TYPE III BARRICADE
- DRUM WITH STEADY BURN MONO-DIRECTIONAL LIGHT
- ▨ WORK ZONE
- ▩ IMPACT ATTENUATOR, TEMPORARY, NON-REDIRECTIVE, TEST LEVEL 3
- ↑ ARROW BOARD
- TEMPORARY CONCRETE BARRIER
- ↑ DIRECTION INDICATOR BARRICADE WITH STEADY BURN MONODIRECTIONAL LIGHT @ 50' SPACING

NOTES:

— TYPE III BARRICADES TO BE PLACED WHEN NO WORK IS BEING PERFORMED

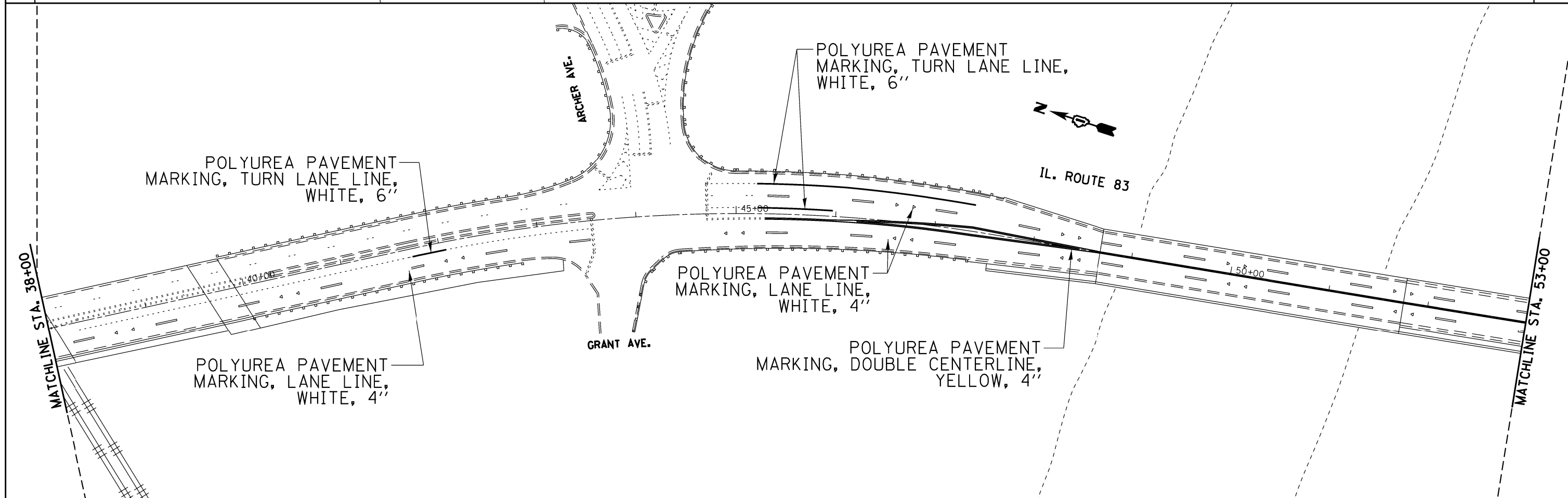
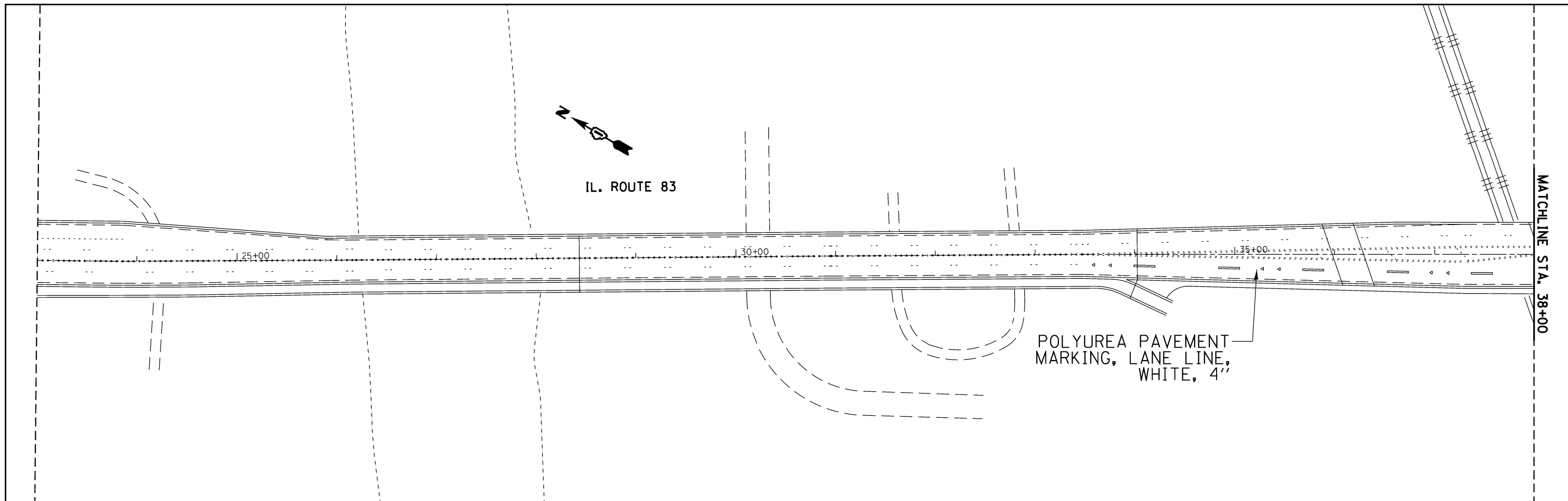
FILE NAME =	USER NAME = pyrzenowskirb	DESIGNED -	REVISED -
ct:\pwr\work\pilot\pyrzenowskirb\d037204	ND115314-sht-plan.dgn	DRAWN -	REVISED -
Default	PLOT SCALE = 100.0000' / in.	CHECKED -	REVISED -
	PLOT DATE = 2/6/2014	DATE -	REVISED -

**STATE OF ILLINOIS
DEPARTMENT OF TRANSPORTATION**

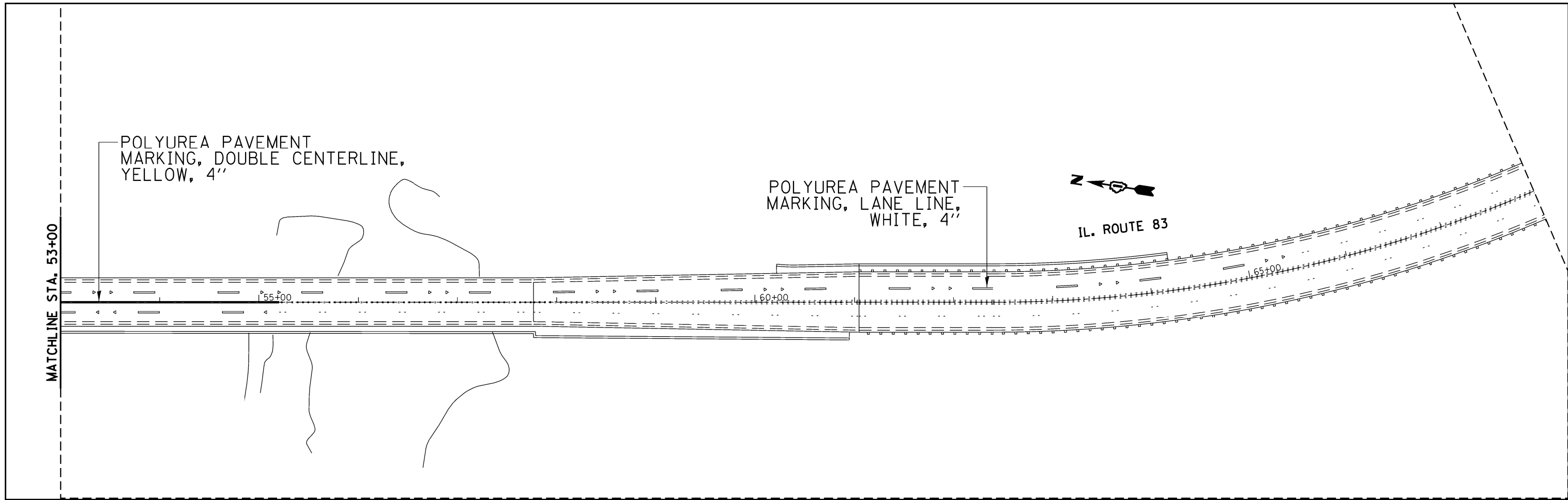
**IL. ROUTE 83 (KINGERY HWY) OVER CAL-SAG CHANNEL
STAGE II TRAFFIC CONTROL AND PROTECTION PLAN**

SCALE: = SHEET OF SHEETS STA. TO STA.

F.A.P. RTE.	SECTION	COUNTY	TOTAL SHEETS	SHEET NO.
344	545B-5-BP	COOK	24	18
CONTRACT NO. 60X63				
ILLINOIS FED. AID PROJECT				



FILE NAME = c:\pwwork\pwwork\pyrzenowski\bd037204	USER NAME = pyrzenowski	DESIGNED -	REVISED -	STATE OF ILLINOIS DEPARTMENT OF TRANSPORTATION	IL. ROUTE 83 (KINGERY HWY) OVER CAL-SAG CHANNEL FINAL PAVEMENT MARKING PLAN			F.A.P. RTE. 344	SECTION 545B-5-BP	COUNTY COOK	TOTAL SHEETS 24	SHEET NO. 19	
Default	PLOT SCALE = 100.0000' / in.	CHECKED -	REVISED -					SCALE: =	SHEET	OF	SHEETS	STA.	TO
	PLOT DATE = 2/6/2014	DATE -	REVISED -		ILLINOIS FED. AID PROJECT								

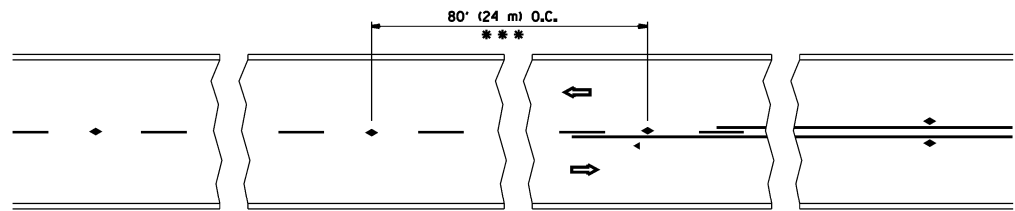


FILE NAME =	USER NAME = pyrzenowskirb	DESIGNED -	REVISED -
ct:\pr-work\pido\t\pyrzenowskirb\037204	NDI15314-sht-plan.dgn	DRAWN -	REVISED -
Default	PLOT SCALE = 100.0000' / in.	CHECKED -	REVISED -
	PLOT DATE = 2/6/2014	DATE -	REVISED -

**STATE OF ILLINOIS
DEPARTMENT OF TRANSPORTATION**

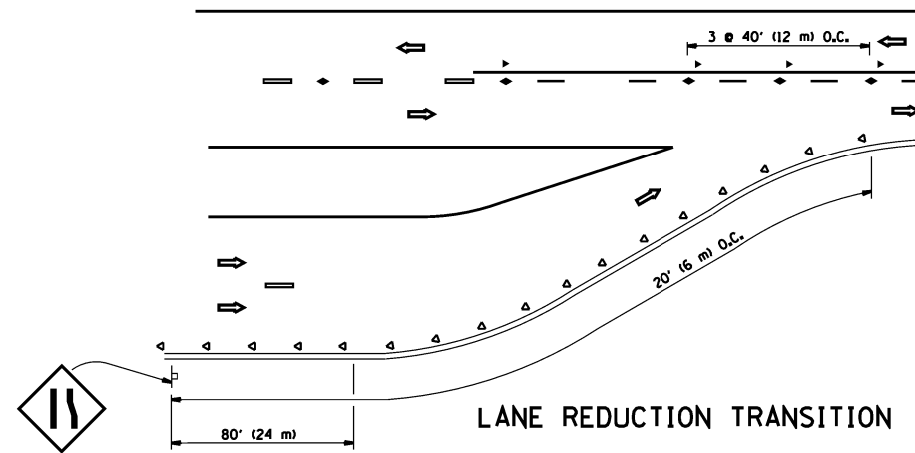
**IL. ROUTE 83 (KINGERY HWY) OVER CAL-SAG CHANNEL
FINAL PAVEMENT MARKING PLAN**

F.A.P. RTE.	SECTION	COUNTY	TOTAL SHEETS	SHEET NO.
344	545B-5-BP	COOK	24	20
CONTRACT NO. 60X63				
ILLINOIS FED. AID PROJECT				

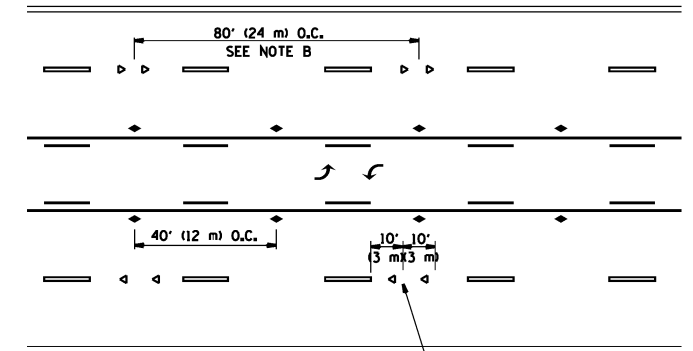


*** REDUCE TO 40' (12 m) O.C. ON CURVES WITH POSTED OR ADVISORY SPEED 45 M.P.H. (70 km/h) OR LESS.

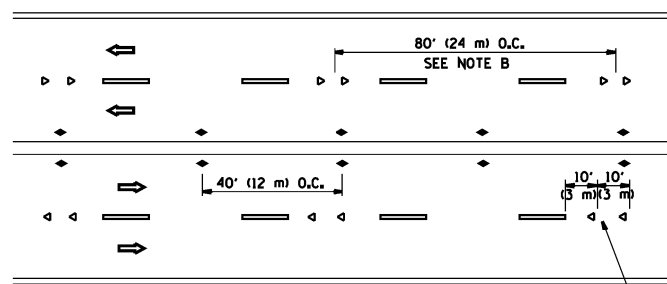
TWO-LANE/TWO-WAY



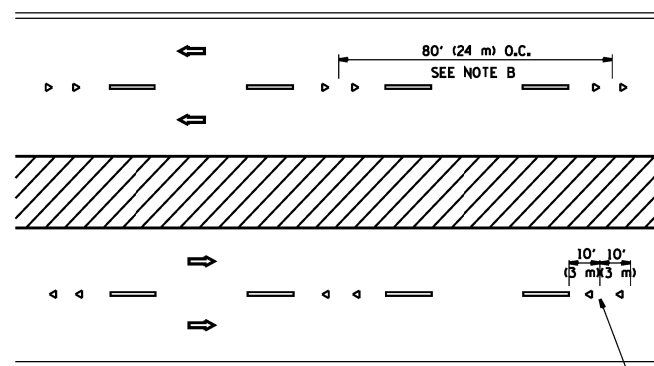
LANE REDUCTION TRANSITION



TWO-WAY LEFT TURN



MULTI-LANE/UNDIVIDED



MULTI-LANE/DIVIDED

GENERAL NOTES

1. MARKERS USED WITH DASHED LINES SHALL BE CENTERED IN THE GAP BETWEEN SEGMENTS.
2. MARKERS USED ADJACENT TO SOLID LINES SHALL BE OFFSET 2 TO 3 (50 TO 75) TOWARD TRAFFIC AS SHOWN.
3. MARKERS THROUGH TANGENTS LESS THAN 500' (150 m) IN LENGTH BETWEEN CURVES SHALL BE INSTALLED AT THE LESSER OF THE TWO CURVE SPACINGS.

SYMBOLS

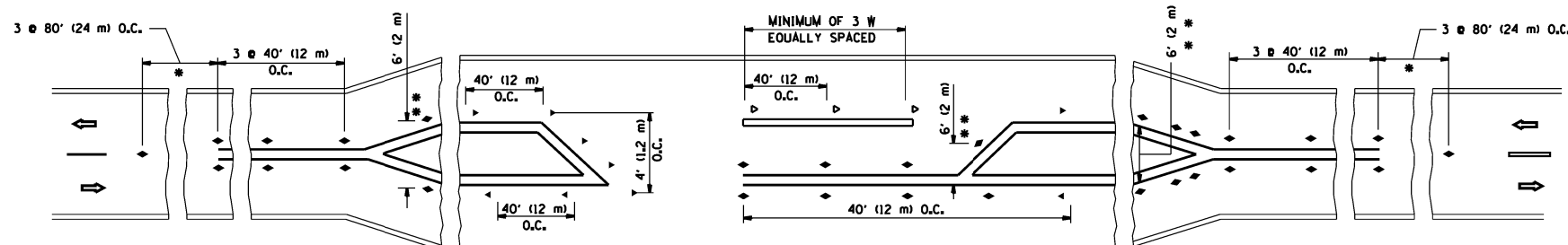
- YELLOW STRIPE
- WHITE STRIPE
- ◀ ONE-WAY AMBER MARKER
- ◁ ONE-WAY CRYSTAL MARKER (W/O)
- ◆ TWO-WAY AMBER MARKER

LANE MARKER NOTES

- A. USE DOUBLE LANE LINE MARKERS SPACED AS SHOWN.
- B. REDUCE TO 40' (12 m) O.C. ON CURVES WHERE ADVISORY SPEEDS ARE 10 M.P.H. (20 km/h) LOWER THAN POSTED SPEEDS.

DESIGN NOTES

1. DOUBLE LANE LINE MARKERS SHALL BE USED UNLESS SPECIFIED OTHERWISE.
2. EXCEPT AS SHOWN ON THE LANE REDUCTION TRANSITION AND FREEWAY EXIT RAMP DETAIL, MARKERS ARE NOT TO BE SPECIFIED ON RIGHT EDGE LINES.
3. THE EXACT MARKER LIMITS, SPACING, AND COLOR SHALL BE INCLUDED IN THE PLANS WHEN STANDARD SPECIFICATIONS ARE NOT BEING USED.
4. MARKERS SHOULD NOT BE USED ALONGSIDE CURBS EXCEPT FOR EXTREMELY SHORT SECTIONS OF CURBS WHERE NOT MORE THAN TWO MARKERS WOULD BE INVOLVED.



* SEE TWO-LANE/TWO-WAY WHERE MARKERS CONTINUE
 ** WHERE THE MEDIAN WIDTH IS 6' (2 m) OR LESS USE TWO-WAY MARKERS.

LEFT TURN

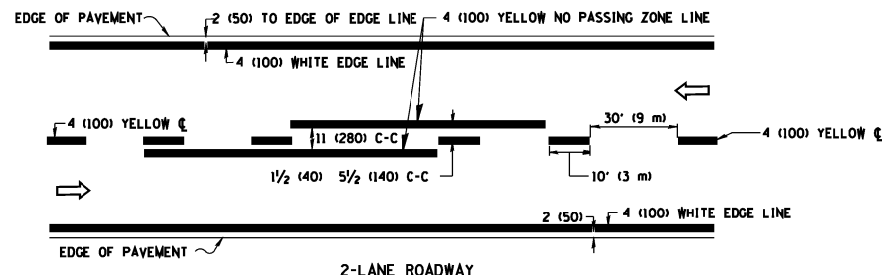
All dimensions are in inches (millimeters) unless otherwise shown.

FILE NAME =	USER NAME = pyrzenowskirb	DESIGNED -	REVISED - T. RAMMACHER 09-19-94
ct:\pwork\pwork\pyrzenowskirb\037204	ND115314-sht-plan.dgn	DRAWN -	REVISED - T. RAMMACHER 03-12-99
	PLOT SCALE = 100.0000' / 1in.	CHECKED -	REVISED - T. RAMMACHER 01-06-00
	PLOT DATE = 2/6/2014	DATE -	REVISED - C. JUCIUS 09-09-09

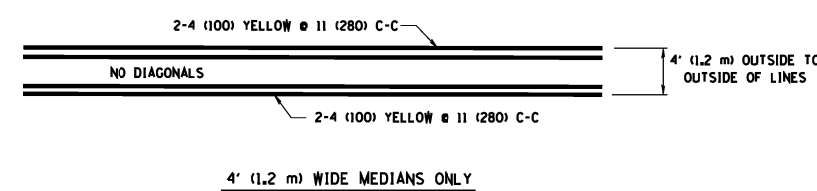
STATE OF ILLINOIS
 DEPARTMENT OF TRANSPORTATION

TYPICAL APPLICATIONS			
RAISED REFLECTIVE PAVEMENT MARKERS (SNOW-PLOW RESISTANT)			
SCALE: NONE	SHEET NO. 1 OF 1 SHEETS	STA.	TO STA.

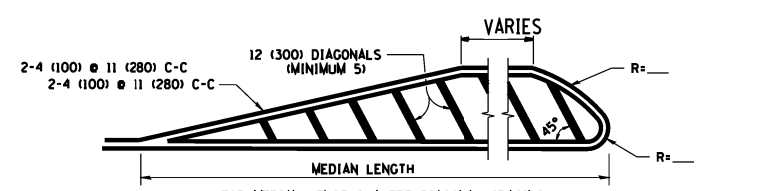
F.A.P. RTE.	SECTION	COUNTY	TOTAL SHEETS	SHEET NO.
344	545B-5-BP	COOK	24	21
TC-11			CONTRACT NO. 60X63	
FED. ROAD DIST. NO. 1 ILLINOIS FED. AID PROJECT				



2-LANE ROADWAY

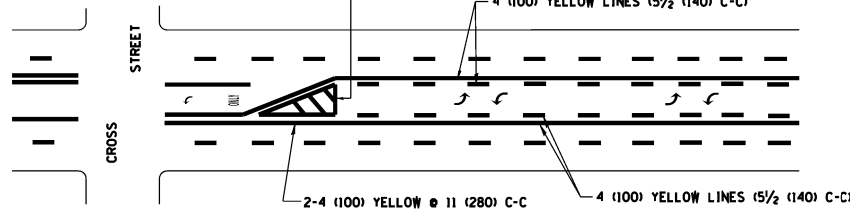


4' (1.2 m) WIDE MEDIANS ONLY

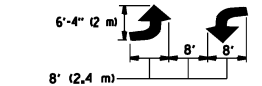


MEDIANS OVER 4' (1.2 m) WIDE

DIAGONAL LINE SPACING: 50' (15 m) C-C (LESS THAN 30MPH (50 km/h))
75' (25 m) C-C 30MPH (50 km/h) TO 45MPH (70 km/h)
150' (45 m) C-C (MORE THAN 45MPH (70 km/h))

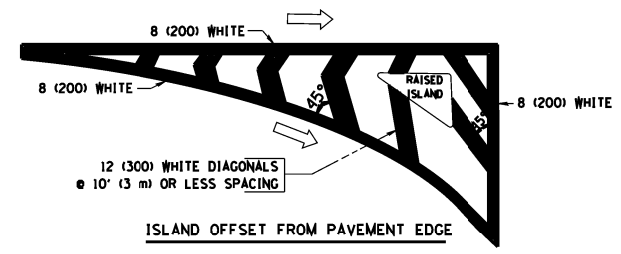


A MINIMUM OF TWO PAIRS OF TURN ARROWS SHALL BE USED, WHITE IN COLOR. ADDITIONAL PAIRS SHALL BE PLACED AT 200' (60 m) TO 300' (90 m) INTERVALS.

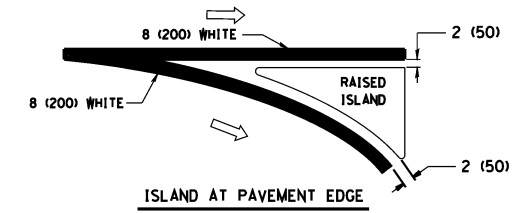


MEDIAN WITH TWO-WAY LEFT TURN LANE

TYPICAL PAINTED MEDIAN MARKING

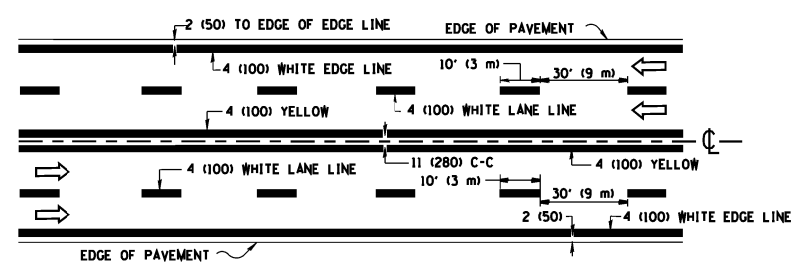


ISLAND OFFSET FROM PAVEMENT EDGE

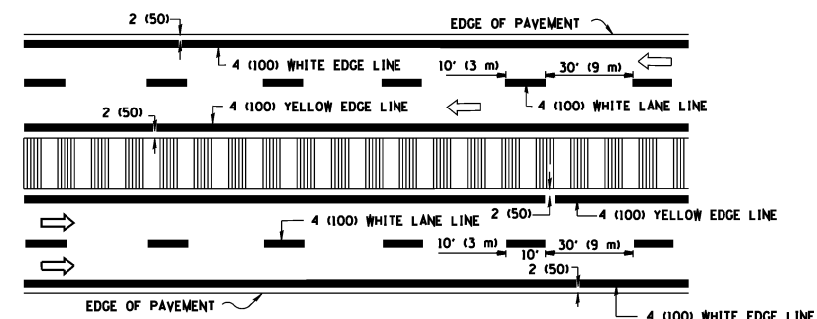


ISLAND AT PAVEMENT EDGE

TYPICAL ISLAND MARKING



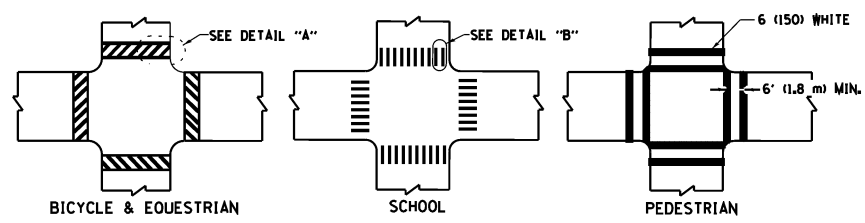
MULTI-LANE UNDIVIDED



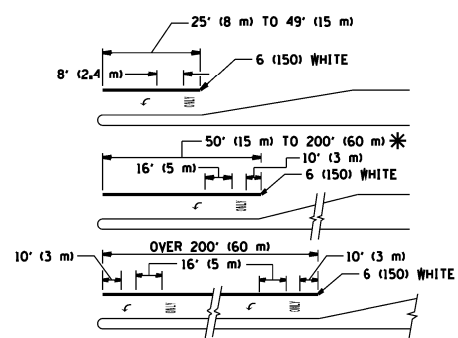
MULTI-LANE DIVIDED WITH MOUNTABLE MEDIAN

NOTE: MEDIANS WITH BARRIER CURB DO NOT REQUIRE AN EDGE LINE

TYPICAL LANE AND EDGE LINE MARKING



TYPICAL CROSSWALK MARKING



FULL SIZE LETTERS 8' (2.4 m) AND ARROWS SHALL BE USED. AREA = 15.6 SQ. FT. (1.5 m²) ONLY AREA = 20.8 SQ. FT. (1.9 m²)

* TURN LANES IN EXCESS OF 400' (120 m) IN LENGTH MAY HAVE AN ADDITIONAL SET OF ARROW - "ONLY" INSTALLED MIDWAY BETWEEN THE OTHER TWO SETS OF ARROW - "ONLY".

TYPICAL LEFT (OR RIGHT) TURN LANE

TYPICAL TURN LANE MARKING

TYPE OF MARKING	WIDTH OF LINE	PATTERN	COLOR	SPACING / REMARKS
CENTERLINE ON 2 LANE PAVEMENT	4 (100)	SKIP-DASH	YELLOW	10' (3 m) LINE WITH 30' (9 m) SPACE
CENTERLINE ON MULTI-LANE UNDIVIDED PAVEMENT	2 @ 4 (100)	SOLID	YELLOW	11 (280) C-C
NO PASSING ZONE LINES FOR ONE DIRECTION	4 (100)	SOLID	YELLOW	5/2 (140) C-C FROM SKIP-DASH CENTERLINE
NO PASSING ZONE LINES FOR BOTH DIRECTIONS	2 @ 4 (100)	SOLID	YELLOW	11 (280) C-C OMIT SKIP-DASH CENTERLINE BETWEEN
LANE LINES	4 (100)	SKIP-DASH	WHITE	10' (3 m) LINE WITH 30' (9 m) SPACE
LANE LINES ON FREEWAYS	5 (125)	SKIP-DASH	WHITE	
DOTTED LINES (EXTENSIONS OF CENTER, LANE OR TURN LANE MARKINGS)	SAME AS LINE BEING EXTENDED	SKIP-DASH	SAME AS LINE BEING EXTENDED	2' (600) LINE WITH 6' (1.8 m) SPACE
EDGE LINES	4 (100)	SOLID	YELLOW-LEFT WHITE-RIGHT	OUTLINE MOUNTABLE MEDIANS IN YELLOW. EDGE LINES ARE NOT USED NEXT TO BARRIER CURB
TURN LANE MARKINGS	6 (150) LINE; FULL SIZE LETTERS & SYMBOLS (8' (2.4m))	SOLID	WHITE	SEE TYPICAL TURN LANE MARKING DETAIL
TWO WAY LEFT TURN MARKING	2 @ 4 (100) EACH DIRECTION	SKIP-DASH AND SOLID IN PAIRS	YELLOW	10' (3 m) LINE WITH 30' (9 m) SPACE FOR SKIP-DASH; 5/2 (140) C-C BETWEEN SOLID LINE AND SKIP-DASH LINE. SEE TYPICAL TWO-WAY LEFT TURN MARKING DETAIL
TWO WAY LEFT TURN MARKING	8' (2.4m) LEFT ARROW		WHITE	
CROSSWALK LINES (PEDESTRIAN)	2 @ 6 (150)	SOLID	WHITE	NOT LESS THAN 6' (1.8 m) APART
CROSSWALK LINES (BIKE & EQUESTRIAN)	12 (300) @ 45°	SOLID	WHITE	2' (600) APART
CROSSWALK LINES (SCHOOL)	12 (300) @ 90°	SOLID	WHITE	2' (600) APART. SEE TYPICAL CROSSWALK MARKING DETAILS.
STOP LINES	24 (600)	SOLID	WHITE	PLACE 4' (1.2 m) IN ADVANCE OF AND PARALLEL TO CROSSWALK, IF PRESENT. OTHERWISE, PLACE AT DESIRED STOPPING POINT, PARALLEL TO CROSSROAD CENTERLINE, WHERE POSSIBLE
PAINTED MEDIANS	2 @ 4 (100) WITH 12 (300) DIAGONALS @ 45°	SOLID	YELLOW	11 (280) C-C FOR THE DOUBLE LINE. SEE TYPICAL PAINTED MEDIAN MARKING.
PAINTED MEDIANS	NO DIAGONALS USED FOR 4' (1.2 m) WIDE MEDIANS		WHITE	
GORE MARKING AND CHANNELIZING LINES	8 (200) WITH 12 (300) DIAGONALS @ 45°	SOLID	WHITE	DIAGONALS: 15' (4.5 m) C-C (LESS THAN 30MPH (50 km/h)) 20' (6 m) C-C 30MPH (50 km/h) TO 45MPH (70 km/h) 30' (9 m) C-C (OVER 45MPH (70 km/h))
RAILROAD CROSSING	24 (600) TRANSVERSE LINES "RR" 15' (4.5 m) AREA OF "RR" 3.6 SQ. FT. (0.33 m ²) EACH	SOLID	WHITE	SEE STATE STANDARD 780001
RAILROAD CROSSING	LETTERS: 16 (400) LINE FOR "X"			"X": 54.0 SQ. FT. (5.0 m ²)
SHOULDER DIAGONALS	12 (300) @ 45°	SOLID	WHITE - RIGHT YELLOW - LEFT	50' (15 m) C-C (LESS THAN 30MPH (50 km/h)) 75' (25 m) C-C 30 MPH (50 km/h) TO 45MPH (70 km/h) 150' (45 m) C-C (OVER 45MPH (70 km/h))

FOR FURTHER DETAILS ON PAVEMENT MARKING REFER TO STANDARD SPECIFICATIONS FOR ROAD AND BRIDGE CONSTRUCTION AND STATE STANDARD 780001.

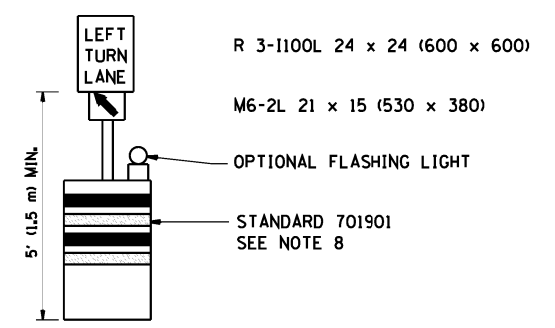
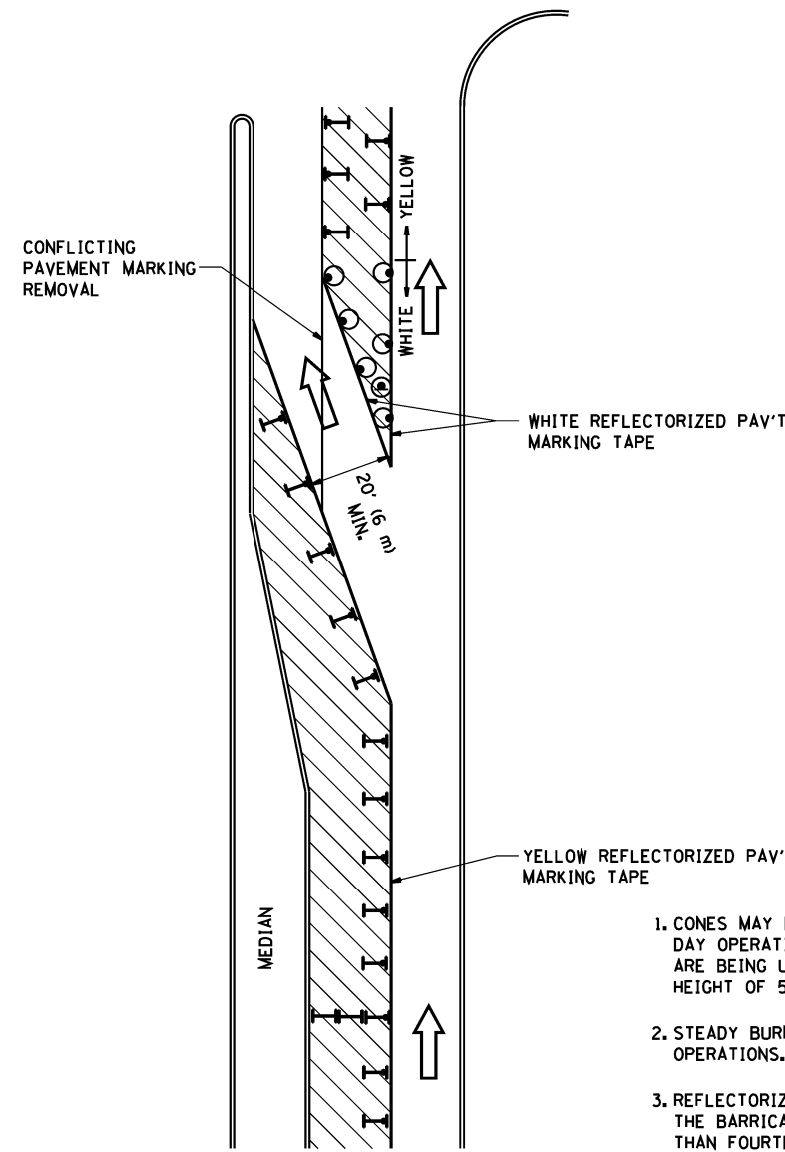
All dimensions are in inches (millimeters) unless otherwise shown.

FILE NAME =	USER NAME = pyrzanowskirb	DESIGNED - EVERS	REVISED - T. RAMMACHER 10-27-94
ct:\pwwork\p1\dot\pyrzanowskirb\d037284	ND115314-sht.pln.dgn	DRAWN -	REVISED - C. JUCIUS 09-09-09
	PLOT SCALE = 100.0000' / in.	CHECKED -	REVISED -
	PLOT DATE = 2/6/2014	DATE - 03-19-90	REVISED -

STATE OF ILLINOIS
DEPARTMENT OF TRANSPORTATION

DISTRICT ONE			
TYPICAL PAVEMENT MARKINGS			
SCALE: NONE	SHEET NO. 1 OF 1 SHEETS	STA.	TO STA.

F.A.P. RTE.	SECTION	COUNTY	TOTAL SHEETS	SHEET NO.
344	545B-5-BP	COOK	24	22
TC-13		CONTRACT NO. 60X63		
FED. ROAD DIST. NO. 1 ILLINOIS FED. AID PROJECT				


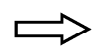
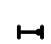


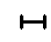


GENERAL NOTES

1. CONES MAY BE SUBSTITUTED FOR BARRICADES OR DRUMS AT HALF THE SPACING DURING DAY OPERATIONS. CONES SHALL BE A MINIMUM OF 28 (710) IN HEIGHT. WHEN CONES ARE BEING USED, THE "LEFT TURN LANE" SIGN MAY BE SKID MOUNTED AT A MINIMUM HEIGHT OF 5' (1.5 m).
2. STEADY BURNING LIGHTS WILL NOT BE REQUIRED ON BARRICADES OR DRUMS FOR DAY OPERATIONS. ALL LIGHTS SHALL BE MONODIRECTIONAL.
3. REFLECTORIZED TEMPORARY PAVEMENT MARKING TAPE SHALL BE PLACED THROUGHOUT THE BARRICADED AREA OF EACH TURN BAY WHERE THE CLOSURE TIME IS GREATER THAN FOURTEEN DAYS.
4. THIS APPLICATION ALSO APPLIES WHEN WORK IS BEING PERFORMED IN THE RIGHT LANE(S) AND THE RIGHT TURN BAY IS TO REMAIN OPEN. UNDER THIS CONDITION, "RIGHT TURN LANE" R3-100 24 x 24 (600 x 600) AND M6-2R 21 x 15 (530 x 380) SHALL BE USED.
5. THESE CONTROLS SHALL SUPPLEMENT MAINLINE TRAFFIC CONTROL FOR LANE CLOSURES.
6. LONGITUDINAL DIMENSIONS MAY BE ADJUSTED TO FIT FIELD CONDITIONS.
7. FORM OPER 725 IS REQUIRED.
8. IF A DRUM OR TYPE II BARRICADE WITH AN ATTACHED SIGN PANEL WHICH MEETS NCHRP 350 REQUIREMENTS IS NOT AVAILABLE, THE SIGNS SHALL BE MOUNTED, ABOVE THE BARRICADES, ON SEPARATE SIGNS SUPPORTS THAT MEET NCHRP 350 PREQUIREMENTS.
9. TRAFFIC CONTROL AND PROTECTION AT TURN BAYS (TO REMAIN OPEN TO TRAFFIC) SHALL BE INCLUDED IN THE COST SPECIFIED TRAFFIC CONTROL STANDARDS OR ITEMS.

All dimensions are in inches (millimeters) unless otherwise shown.

LEGEND

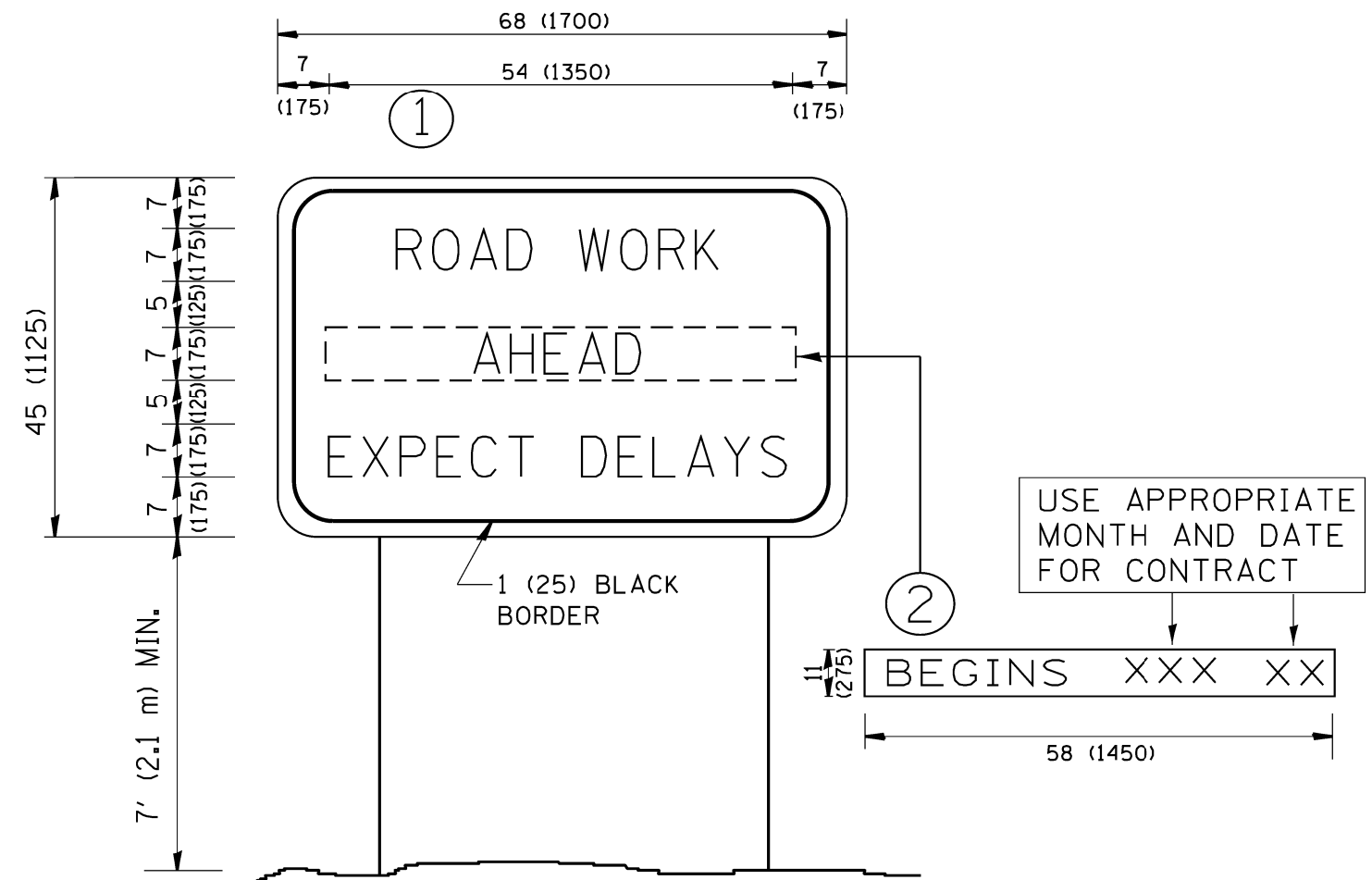
-  WORK AREA
-  LANE OPEN TO TRAFFIC
-  TYPE I OR II BARRICADE WITH STEADY BURN LIGHT
-  DRUM WITH STEADY BURN LIGHT
-  DRUM WITH SIGN (WITH OPTIONAL FLASHING LIGHT) SEE DETAIL
-  TYPE I OR II CHECK BARRICADE WITH FLASHING LIGHT

FILE NAME =	USER NAME = pyrzenowskirb	REVISED - T. RAMMACHER 09-08-94	REVISED - R. BORO 09-14-09
ct:\pwork\pwork\pyrzenowskirb\037204	NDI15314-sht.pln.dgn	REVISED - A. HOUSEH 11-07-95	REVISED -
	PLOT SCALE = 100.0000' / 1in.	REVISED - A. HOUSEH 10-12-96	REVISED -
	PLOT DATE = 2/6/2014	REVISED - T. RAMMACHER 01-06-00	REVISED -

**STATE OF ILLINOIS
DEPARTMENT OF TRANSPORTATION**

TRAFFIC CONTROL AND PROTECTION AT TURN BAYS (TO REMAIN OPEN TO TRAFFIC)			
SCALE: NONE	SHEET NO. 1 OF 1 SHEETS	STA.	TO STA.

F.A.P. RTE.	SECTION	COUNTY	TOTAL SHEETS	SHEET NO.
344	545B-5-BP	COOK	24	23
TC-14			CONTRACT NO. 60X63	
FED. ROAD DIST. NO. 1 ILLINOIS FED. AID PROJECT				



NOTES:

1. USE BLACK LETTERING ON ORANGE BACKGROUND.
2. ERECT SIGNS IN ADVANCE OF THE LOCATION FOR THE "ROAD CONSTRUCTION AHEAD" SIGN AT LOCATIONS AS DIRECTED BY THE ENGINEER.
3. ERECT SIGN ① WITH INSTALLED PANEL ② ONE WEEK PRIOR TO THE START OF CONSTRUCTION.
4. REMOVE PANEL ② SOON AFTER THE START OF CONSTRUCTION.
5. SEE SPECIAL PROVISION FOR "TEMPORARY INFORMATION SIGNING" FOR ADDITIONAL INFORMATION.
6. ONE SIGN ASSEMBLY EQUALS 25.70 SQ. FT. (2.3 SQ. M.)
7. SHALL BE PAID FOR AS TEMPORARY INFORMATION SIGNING.

ALL DIMENSIONS ARE IN INCHES (MILLIMETERS) UNLESS OTHERWISE SHOWN.

FILE NAME =	USER NAME = pyrzanowskirb	DESIGNED -	REVISED - R. MIRS 09-15-97
ct:\pwork\pwork\pyrzanowskirb\037204	NDI15314-sht-plan.dgn	DRAWN -	REVISED - R. MIRS 12-11-97
	PLOT SCALE = 100.0000' / 1in.	CHECKED -	REVISED - T. RAMMACHER 02-02-99
	PLOT DATE = 2/6/2014	DATE -	REVISED - C. JUCIUS 01-31-07

**STATE OF ILLINOIS
DEPARTMENT OF TRANSPORTATION**

**ARTERIAL ROAD
INFORMATION SIGN**

SCALE: NONE SHEET NO. 1 OF 1 SHEETS STA. TO STA.

F.A.P. RTE.	SECTION	COUNTY	TOTAL SHEETS	SHEET NO.
344	545B-5-BP	COOK	24	24
TC-22		CONTRACT NO. 60X63		
FED. ROAD DIST. NO. 1 ILLINOIS FED. AID PROJECT				