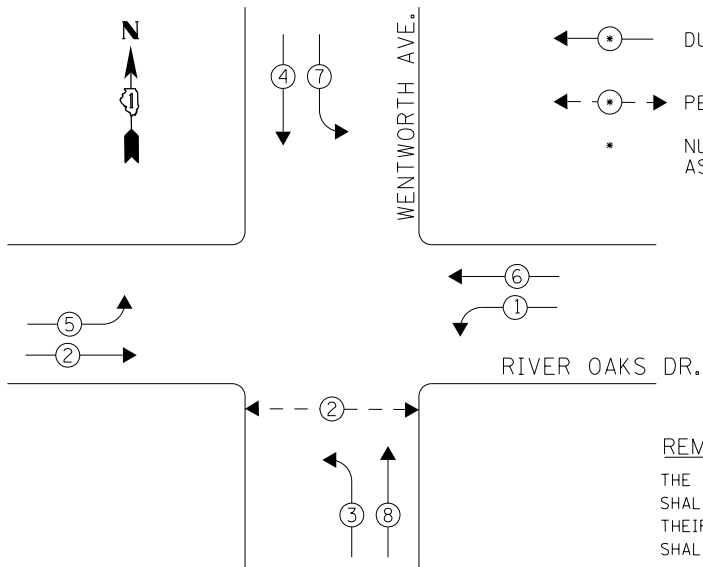


**CONTROLLER SEQUENCE**



**LEGEND**

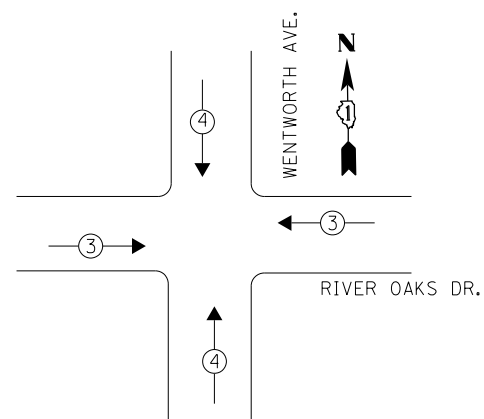
- ← ⊙ → DUAL ENTRY PHASE
- ← ⊙ → PEDESTRIAN PHASE
- NUMBER REFERS TO ASSOCIATED PHASE

**REMOVAL OF EXISTING TRAFFIC SIGNAL EQUIPMENT**

THE FOLLOWING ITEMS SHALL BE REMOVED BY THE CONTRACTOR AND SHALL BE DISPOSED OF BY THEM OUTSIDE THE RIGHT-OF-WAY AT THEIR EXPENSE. THE SALVAGE VALUE OF THE REMOVED EQUIPMENT SHALL BE REFLECTED IN THE CONTRACT BID PRICE.

- 2 EACH PEDESTRIAN SIGNAL HEAD, 1-FACE
- 2 EACH PEDESTRIAN PUSH-BUTTON

**PHASE DESIGNATION DIAGRAM**



**EMERGENCY VEHICLE PREEMPTION SEQUENCE**

EMERGENCY VEHICLE PREEMPTORS		
EMERGENCY VEHICLE PREEMPTOR	3	4
MOVEMENT	← →	↓ ↑

**I. D. O. T. TRAFFIC SIGNAL INSTALLATION ELECTRICAL SERVICE REQUIREMENTS**

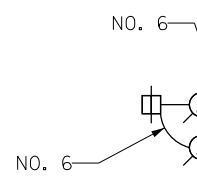
TYPE	NO. LAMPS	WATTAGE INCAND.	WATTAGE LED	%OPERATION	TOTAL WATTAGE
SIGNAL (RED)	12		17	0.50	102.0
(YELLOW)	12		25	0.25	75.0
(GREEN)	12		15	0.25	45.0
ARROW	16		12	0.10	19.2
PED. SIGNAL	2		25	1.00	50.0
CONTROLLER	1	100		1.00	100.0
BATTERY BACKUP	1	25		1.00	25.0
<b>TOTAL =</b>					<b>416.2</b>

**ENERGY COSTS-** BILLED TO: IDOT DISTRICT 1  
201 WEST CENTER COURT  
SCHAUMBURG, IL 60196-1096

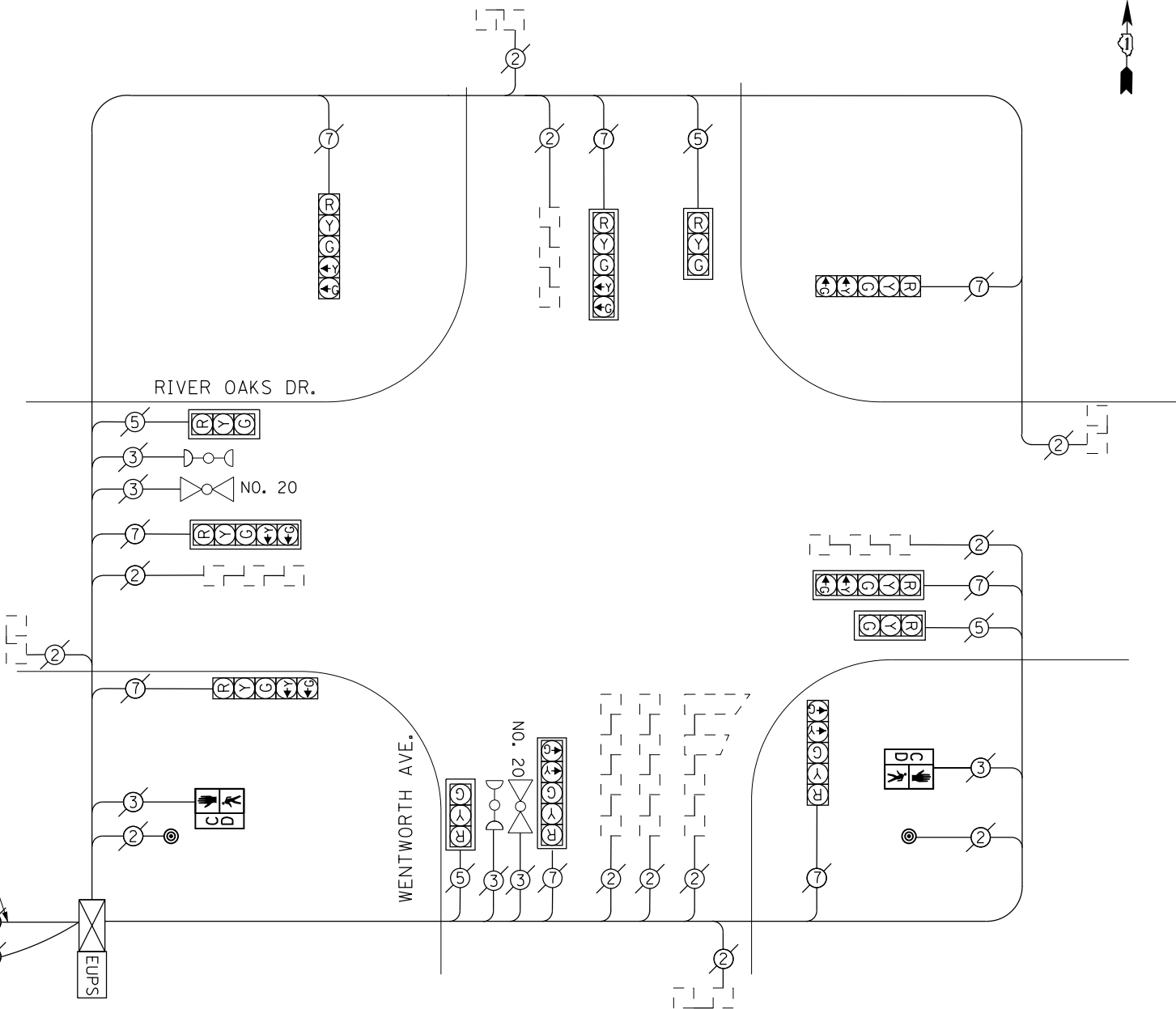
**ENERGY SUPPLY-** CONTACT BRAD SHINABARGAR  
PHONE 708-325-2692  
COMMONWEALTH EDISON

**SCHEDULE OF QUANTITIES**

Items	Unit	Quantity
MAINTENANCE OF EXISTING TRAFFIC SIGNAL INSTALLATION	EACH	1
PEDESTRIAN SIGNAL HEAD, LED, 1-FACE, BRACKET MOUNTED WITH COUNTDOWN TIMER	EACH	2
PEDESTRIAN PUSH-BUTTON	EACH	2
REMOVE EXISTING TRAFFIC SIGNAL EQUIPMENT	EACH	1



**CABLE PLAN**



FILE NAME = D160X64-sht-TS4475.dgn  
Default

USER NAME = SE3  
PLOT SCALE = 48.0000' / in.  
PLOT DATE = 2/3/2014

DESIGNED -  
DRAWN -  
CHECKED -  
DATE -

REVISED -  
REVISED -  
REVISED -  
REVISED -

**STATE OF ILLINOIS  
DEPARTMENT OF TRANSPORTATION**

**RIVER OAKS DR./WENTWORTH AVE. - CABLE PLAN,  
SCHEDULE OF QUANTITIES, PHASE DESIG. DIAGRAM & EVP SEQUENCE**

SCALE: SHEET OF SHEETS STA. TO STA.

F.A. RTE.	SECTION	COUNTY	TOTAL SHEETS	SHEET NO.
	2013-075TS	COOK	78	28
CONTRACT NO. 60X64				
ILLINOIS FED. AID PROJECT				

TS 4475  
CALUMET CITY