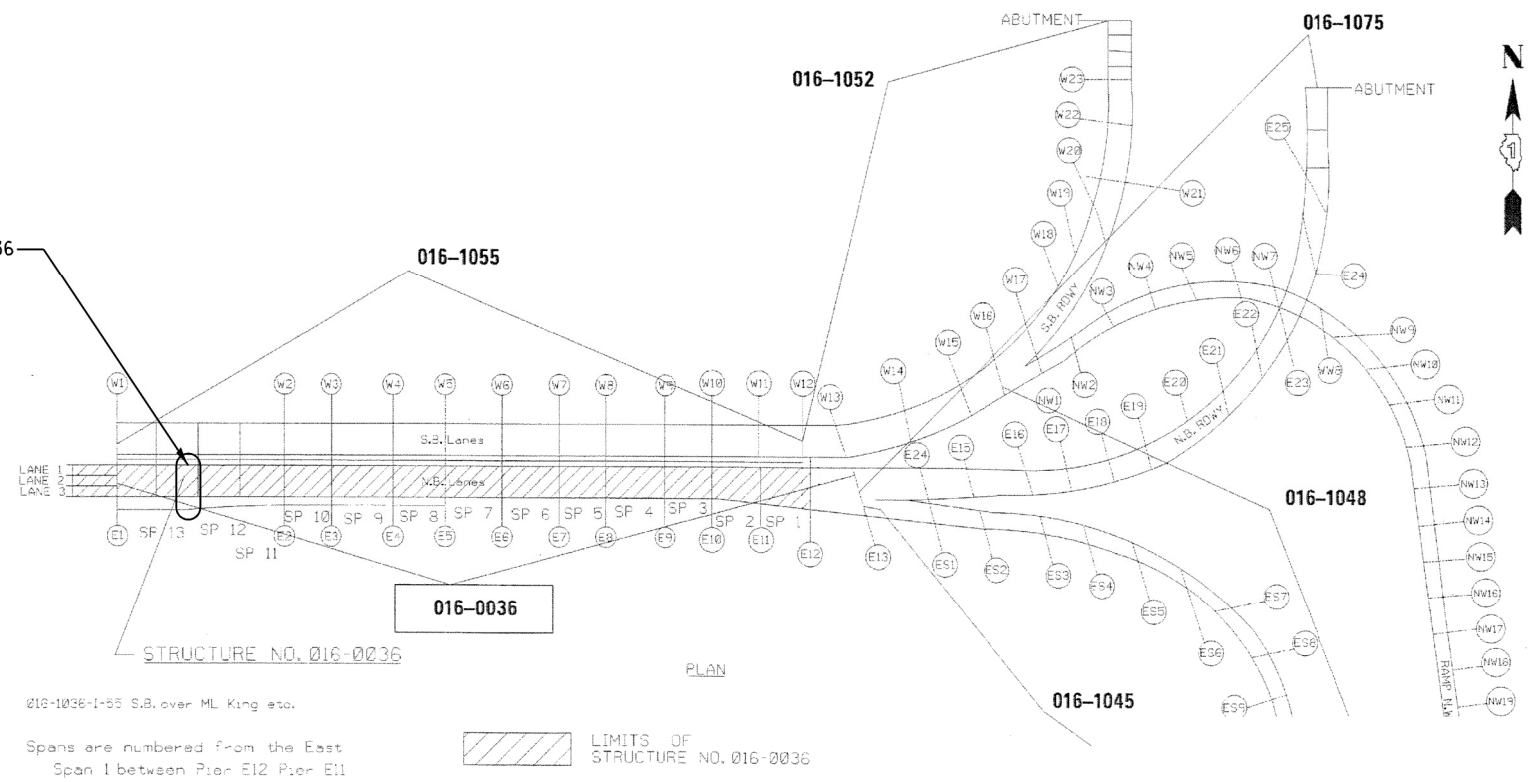


PIER E5 REPAIR SN 016-0036



016-1055
016-1052
016-1048
016-1045

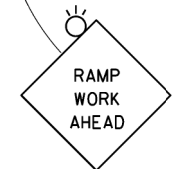
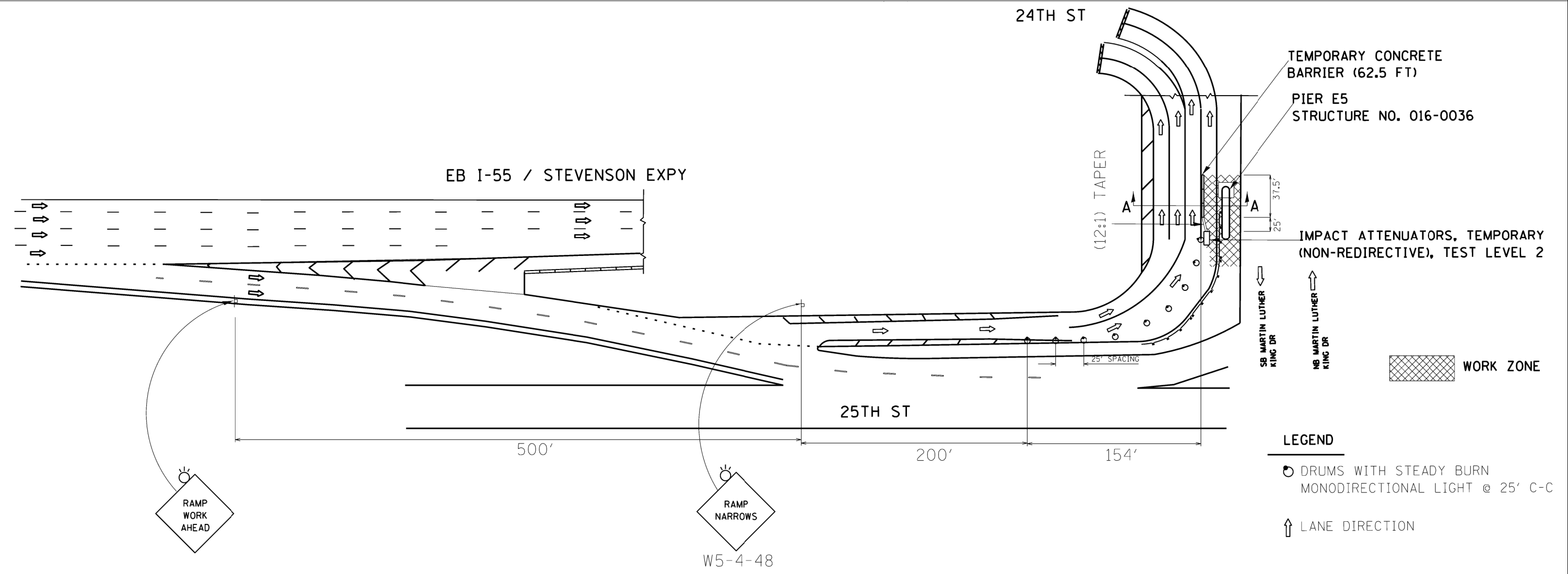
STRUCTURE NO. 016-0036

PLAN

016-1036-1-55 S.B. over ML King etc.

Spans are numbered from the East
Span 1 between Pier E12 Pier E11

LIMITS OF STRUCTURE NO. 016-0036



W5-4-48

- LEGEND**
- DRUMS WITH STEADY BURN MONODIRECTIONAL LIGHT @ 25' C-C
 - ↑ LANE DIRECTION

FILE NAME =	USER NAME = osbornnp	DESIGNED -	REVISED -	STATE OF ILLINOIS DEPARTMENT OF TRANSPORTATION	SUGGESTED STAGING FOR SHORING AND CRIBBING				F.A.I. RTE.	SECTION	COUNTY	TOTAL SHEETS	SHEET NO.
ci:\p\work\p\dot\osbornnp\d0382528\016414-shr-cover.dgn		DRAWN -	REVISED -		SN 016-0036				55	2014-018BR	COOK	33	10
Default		CHECKED -	REVISED -		SCALE:	SHEET	OF	SHEETS	STA.	TO STA.	CONTRACT NO. 60X91		
		DATE -	REVISED -						ILLINOIS FED. AID PROJECT				