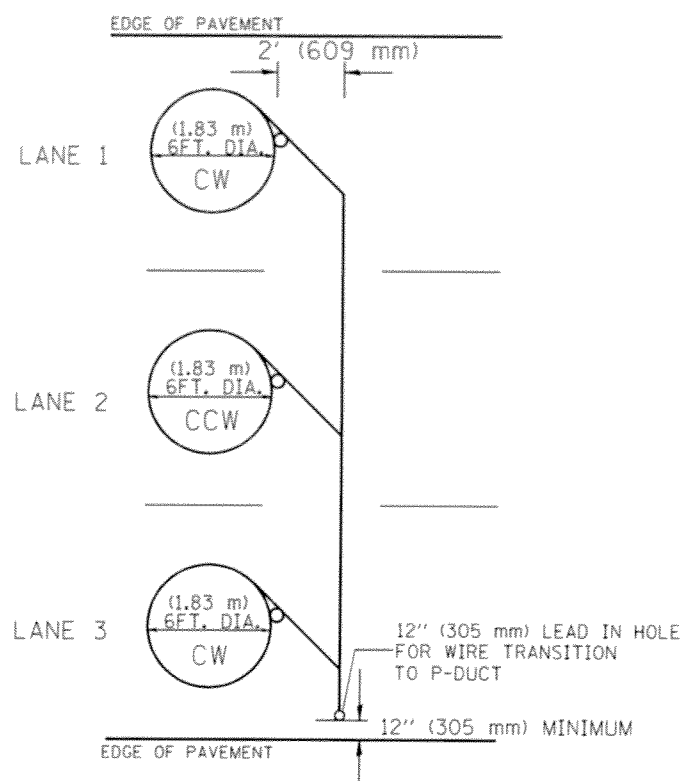
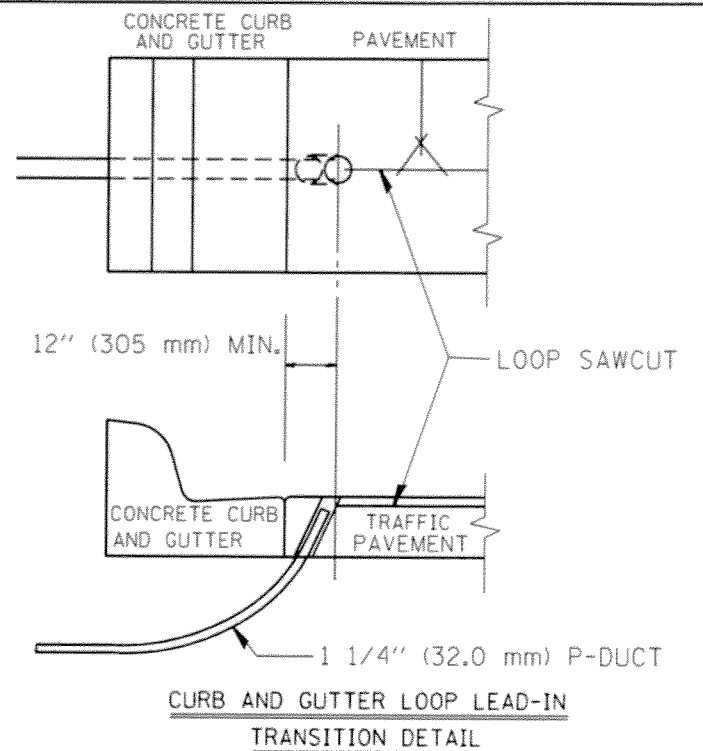


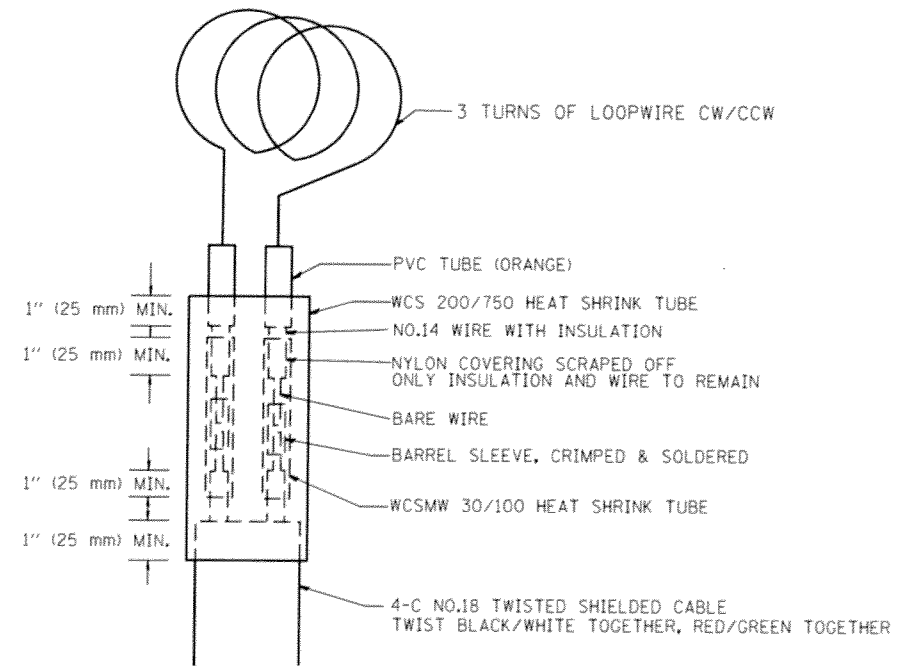
TYPICAL 6FT. (1.83 m) DIA. INDUCTION LOOP CORE DRILL
LAYOUT FOR MULTIPLE LANE ROADWAY



TYPICAL 6FT. (1.83 m) DIA. INDUCTION LOOP CORE DRILL
LAYOUT FOR MULTIPLE LANE ROADWAY



CURB AND GUTTER LOOP LEAD-IN
TRANSITION DETAIL



MINIMUM 1" (25 mm) HEAT SHRINK TUBING OVERLAP
ON WIRE, PVC & SHIELDED CABLE TO FORM WATER TIGHT SEAL

LOOP SPLICING REQUIREMENTS

NOTES

1. EACH LOOP SHALL BE SPLICED TO A 4-C NO.18 TWISTED SHIELDED LEAD IN WHEN 150FT. (45 m) OR MORE FROM CABINET.
2. LOOPS SHALL BE SPLICED IN HANDHOLES ONLY, OTHERWISE WRITTEN PERMISSION SHALL BE OBTAINED FROM TSC ENGINEER.
3. LOOPS SHALL NOT BE SPLICED IN SERIES.
4. EACH LOOP LEAD IN SHALL BE IDENTIFIED AND PERMANENTLY COLOR CODED IN THE COREHOLE, HANDHOLE & CABINETS THRU WHICH THEY ENTER OR PASS AND TAGGED WITH THE CORRECT NOMENCLATURES.

FILE NAME =	USER NAME = m29g	DESIGNED - R.L.	REVISED - 6/94	STATE OF ILLINOIS DEPARTMENT OF TRANSPORTATION TRAFFIC SYSTEMS CENTER	EXISTING ROUND INDUCTION LOOP TYPICALS	F.A.E. RTE. =	SECTION	COUNTY	TOTAL SHEETS	SHEET NO.
C:\Projects\TSC\TYPICALS\TSC\TYP08.dgn		DRAWN - G.M.	REVISED - 10/96			56	2014-018BR	COOK		34
PLOT SCALE = 100.0000 ' / IN.		CHECKED - R.L.	REVISED -			CONTRACT NO. 60X91				
PLOT DATE = 12/2/2010		DATE - 6-22-94	REVISED -			FED. ROAD DIST. NO. ILLINOIS FED. AID PROJECT				
					SCALE: NONE	SHEET NO. OF SHEETS STA. TO STA.				