

F.A.U. RTE.	SECTION	COUNTY	TOTAL SHEETS	SHEET NO.
3757	12-00048-00-SW	WILL	15	1
		ILLINOIS	CONTRACT NO. 61A32	

DESIGN DESIGNATION - LOCAL ROAD
 POSTED SPEED LIMIT - 30 MPH
 TRAFFIC - ADT = 1600

DEPARTMENT OF TRANSPORTATION
 DIVISION OF HIGHWAYS

**PLANS FOR PROPOSED
 FEDERAL AID HIGHWAY**

**FAU ROUTE 3757 (80TH AVENUE)
 FROM FAU 320 (LARAWAY ROAD)
 TO FAU 3753 (SAUK TRAIL)
 SIDEWALK CONSTRUCTION
 SECTION NO: 12-00048-00-SW
 PROJECT NO: SRTS-4009(157)
 VILLAGE OF FRANKFORT
 WILL COUNTY
 JOB NO. C-91-437-12**



SA
STRAND
 ASSOCIATES*

1170 SOUTH HOUBOLT ROAD
 JOLIET, ILLINOIS 60431
 (815) 744-4200
 IDFPR NO. 184-001273

STATE OF ILLINOIS
 DEPARTMENT OF TRANSPORTATION
 DIVISION OF HIGHWAYS

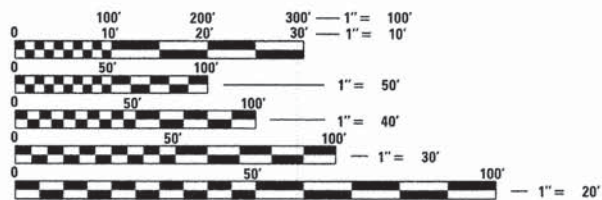
Approved Adam Moline
 1/30/2014
 Village of Frankfort, Development Coordinator

Passed FEBRUARY 18, 2014
C. J. Hart
 District 1 Engineer of Local Roads & Streets

Releasing for Bid
 Based on Limited
 Review February 18, 2014
John Fortmann
 Deputy Director of Highways, Region 1 Engineer

**PRINTED BY THE AUTHORITY
 OF THE STATE OF ILLINOIS**

PROGRAM AND OFFICE ENGINEER: FAWAD AQUEEL, PE, PTOE 847-705-4021



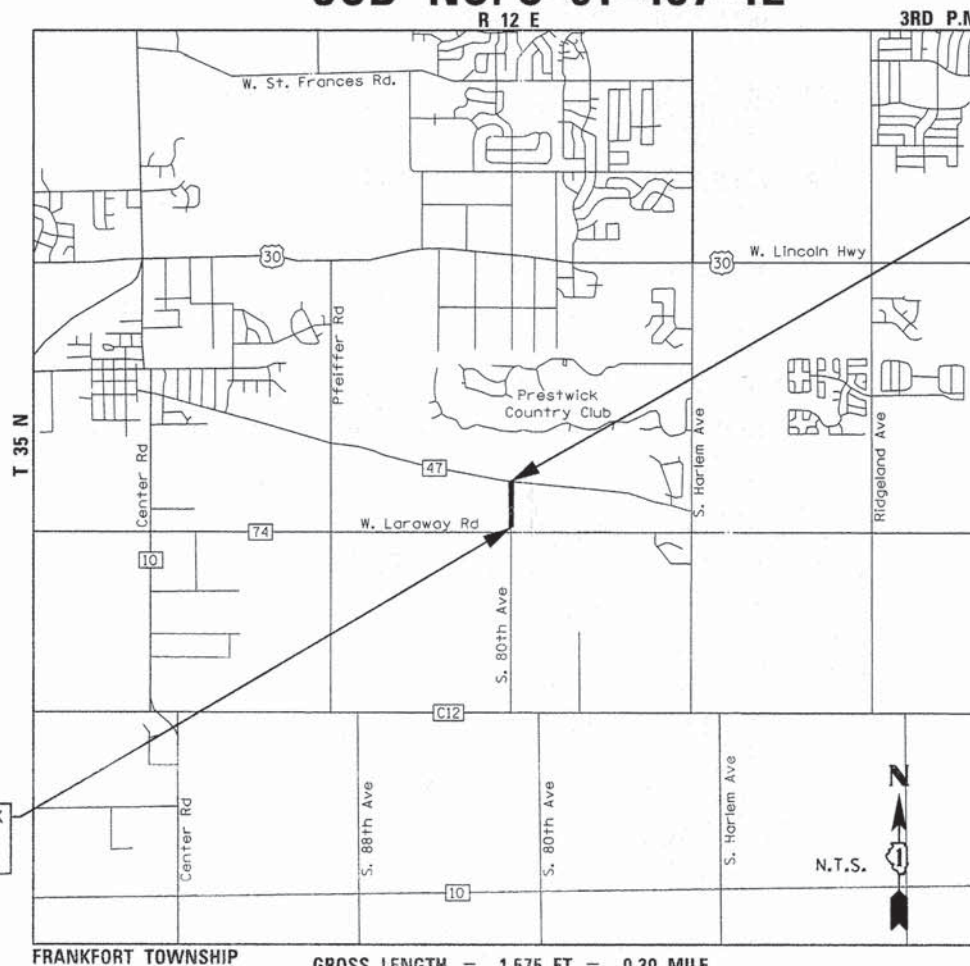
FULL SIZE PLANS HAVE BEEN PREPARED USING STANDARD
 ENGINEERING SCALES. REDUCED SIZED PLANS WILL NOT
 CONFORM TO STANDARD SCALES. IN MAKING MEASUREMENTS
 ON REDUCED PLANS, THE ABOVE SCALES MAY BE USED.

J.U.L.I.E.
 JOINT UTILITY LOCATION INFORMATION FOR EXCAVATION
 1-800-892-0123
 OR 811

PROJECT ENGINEER: ADAM MOLINE, PE

CONTRACT NO. 61A32

80TH AVENUE SIDEWALK
 BEGIN IMPROVEMENT
 STA. 98+25.57



80TH AVENUE SIDEWALK
 END IMPROVEMENT
 STA. 113+97.36

STRAND ASSOCIATES, INC.
 ADAM R. MOLINE, P.E.

DATE: 1/30/2014 EXP: 11/30/2015

FRANKFORT TOWNSHIP
 GROSS LENGTH = 1,575 FT. = 0.30 MILE
 NET LENGTH = 1,575 FT. = 0.30 MILE

INDEX OF SHEETS

SHEET NO.	DESCRIPTION
1	COVER
2	GENERAL NOTES
3	SUMMARY OF QUANTITIES
4	TYPICAL SECTIONS
5	ALIGNMENTS, TIES, AND BENCHMARKS
6-8	BOTH AVENUE SIDEWALK PLAN AND PROFILE
9-11	IDOT DISTRICT 1 STANDARD DETAILS
12-15	BOTH AVENUE SIDEWALK CROSS SECTIONS

HIGHWAY STANDARDS

000001-06	STANDARD SYMBOLS, ABBREVIATIONS, AND PATTERNS
424001-07	PERPENDICULAR CURB RAMPS FOR SIDEWALKS
424011-01	CORNER PARALLEL CURB RAMPS FOR SIDEWALKS
424026-01	ENTRANCE/ALLEY PEDESTRIAN CROSSINGS
606001-05	CONCRETE CURB TYPE B AND COMBINATION CONCRETE CURB AND GUTTER
701006-05	OFF-RD OPERATIONS, 2L, 2W, 15' TO 24" FROM PAVEMENT EDGE
701502-06	URBAN LANE CLOSURE, 2L, 2W WITH BIDIRECTIONAL LEFT TURN LANE
701701-09	URBAN LANE CLOSURE, MULTILANE INTERSECTION
701801-05	SIDEWALK, CORNER OR CROSSWALK CLOSURE
701901-03	TRAFFIC CONTROL DEVICES

GENERAL NOTES

- ALL CONSTRUCTION SHALL BE DONE ACCORDING TO THE STATE OF ILLINOIS "STANDARD SPECIFICATIONS FOR ROAD AND BRIDGE CONSTRUCTION" ADOPTED JAN. 1, 2012, THE "SUPPLEMENTAL SPECIFICATIONS AND RECURRING SPECIAL PROVISIONS" ADOPTED JANUARY 1, 2014, THE DETAILS IN THESE PLANS, AND THE SPECIAL PROVISIONS INCLUDED IN THE CONTRACT DOCUMENTS.
- ANY REFERENCE TO STANDARDS THROUGHOUT THE PLANS OR SPECIAL PROVISIONS SHALL BE INTERPRETED TO BE THE LATEST STANDARDS OF THE ILLINOIS DEPARTMENT OF TRANSPORTATION AND THE VILLAGE OF FRANKFORT.
- THE LOCATION AND ELEVATION OF THE VARIOUS UNDERGROUND UTILITIES AS SHOWN ON THE DRAWINGS ARE APPROXIMATE. THE CONTRACTOR SHALL USE SPECIAL CARE WHEN CONDUCTING CONSTRUCTION OPERATIONS NEAR THEM AND IS RESPONSIBLE FOR ANY DAMAGE CAUSED.
- THE CONTRACTOR SHALL NOTIFY THE AGENCIES AND UTILITIES AT LEAST 10 DAYS PRIOR TO ANY CONSTRUCTION IN THE AREA AND SHALL COMPLY WITH ALL RESTRICTIONS FOR EQUIPMENT MOVEMENTS AND CLEARANCES IN REGARDS TO THEIR FACILITIES.
- 48 HOURS PRIOR TO THE START OF ANY EXCAVATION, THE CONTRACTOR SHALL CALL J.U.L.I.E. AND THE VILLAGE OF FRANKFORT (815-469-2177) FOR VERIFICATION OF ALL UTILITY LOCATIONS IN THE FIELD.
- THE CONTRACTOR SHALL COORDINATE WITH ALL ABOVE AND UNDERGROUND UTILITY COMPANIES IF UTILITIES NEED TO BE RELOCATED.
- WHERE SECTION OR SUBSECTION MONUMENTS ARE ENCOUNTERED, THE ENGINEER SHALL BE NOTIFIED BEFORE SUCH MONUMENTS ARE REMOVED. THE CONTRACTOR SHALL PROTECT AND CAREFULLY PRESERVE ALL PROPERTY MARKER MONUMENTS UNTIL THE OWNER, AN AUTHORIZED AGENT, OR LAND SURVEYOR HAS WITNESSED OR OTHERWISE REFERENCED THEIR LOCATION. THE CONTRACTOR WILL BE RESPONSIBLE FOR HAVING AN AUTHORIZED SURVEYOR REESTABLISH ANY SECTION OR SUB-SECTION MONUMENTS DISRUPTED BY THEIR OPERATIONS.
- THE CONTRACTOR SHALL TAKE ALL NECESSARY PRECAUTIONS FOR THE PROTECTION OF EXISTING PLANT MATERIAL FOR WHICH THE CONTRACT DOES NOT PROVIDE REMOVAL. THE PROTECTION OF EXISTING PLANT MATERIAL AND THE REPAIR OR REPLACEMENT OF EXISTING PLANT MATERIAL DAMAGED BY THE CONTRACTOR SHALL BE DONE IN ACCORDANCE WITH THE REQUIREMENTS OF SECTION 201 OF THE STANDARD SPECIFICATIONS.
- SIDEWALK RAMPS ACCESSIBLE TO THE DISABLED SHALL BE PROVIDED AT ALL CROSSWALK AND DRIVEWAY LOCATIONS WITH PERMANENT TRAFFIC CONTROL DEVICES OR AS DIRECTED BY THE ENGINEER, ACCORDING TO STANDARD 424001.
- THE CONTRACTOR SHALL BE REQUIRED TO MAINTAIN ACCESS TO ALL PRIVATE AND COMMERCIAL PROPERTIES AT ALL TIMES DURING THE CONSTRUCTION OF THIS PROJECT.
- THE CONTRACTOR SHALL TAKE CARE TO PROTECT EXISTING LANDSCAPING AT LOCATIONS NOT SHOWN IN THE PLANS TO BE REMOVED AND AS DIRECTED BY THE ENGINEER. LANDSCAPING TO BE PROTECTED THAT IS DAMAGED BY THE CONTRACTOR'S OPERATIONS SHALL BE REPLACED IN KIND AND AT THEIR EXPENSE.
- LAYOUT AND STAKING FOR ALL CONSTRUCTION OPERATIONS SHALL BE PROVIDED BY THE CONTRACTOR.
- THE CONTRACTOR'S OPERATIONS AND TEMPORARY STORAGE ACTIVITIES SHALL BE LIMITED TO THE WORK AREA AND/OR CONSTRUCTION LIMITS. ANY ADDITIONAL STAGING AREAS ADJACENT TO THE PROJECT ARE SUBJECT TO PRIOR APPROVAL BY THE APPROPRIATE AGENCY. NO ADDITIONAL COMPENSATION WILL BE ALLOWED FOR COMPLIANCE WITH THE ABOVE REQUIREMENTS.
- TOP SOIL SHALL BE FERTILE, FRIABLE, NATURAL LOAM, SURFACE SOIL, REASONABLY FREE OF SUBSOIL, CLAY LUMPS, BRUSH WEEDS AND OTHER LITTER AND FREE OF ROOT STUMPS, STONES AND OTHER MATERIAL HARMFUL TO PLANT GROWTH.
- CLEARING OF BRUSH, BUSHES AND TREES WITH A DIAMETER LESS THAN 6" WILL NOT BE PAID FOR SEPARATELY PER SECTION 202 OF THE STANDARD SPECIFICATIONS.
- WHERE SPECIFIED ON THE PLANS, OR DIRECTED BY THE ENGINEER, TRIMMING OF VEGETATION WILL BE CONSIDERED TO BE CLEARING AND NOT MEASURED FOR PAYMENT.

- VERIFICATIONS OF DIMENSIONS: IT IS THE CONTRACTOR'S RESPONSIBILITY TO VERIFY ALL DIMENSIONS AND CONDITIONS EXISTING IN THE FIELD PRIOR TO CONSTRUCTION AND ORDERING MATERIALS
- THE REMOVAL AND/OR REPLACEMENT OF ANY PAVEMENT, CURB, SIDEWALK, ETC. SHALL BE ACCOMPLISHED BY MEANS OF A SAW CUT JOINT, AT THE DIRECTION OF THE ENGINEER. THIS WORK WILL NOT BE PAID FOR SEPARATELY, BUT SHALL BE INCLUDED IN THE UNIT PRICE FOR THE VARIOUS ITEMS.
- ANY LOOSE MATERIAL DEPOSITED IN THE FLOW LINE OF DITCHES, GUTTERS, OR OTHER DRAINAGE STRUCTURES SHALL BE REMOVED BY THE END OF EACH DAY BY THE CONTRACTOR AT THEIR EXPENSE.
- LANDSCAPING WORK SHALL BE PAID FOR USING THE FOLLOWING PAY ITEMS:
 SODDING, SALT TOLERANT
 SUPPLEMENTAL WATERING
 NITROGEN FERTILIZER NUTRIENT
 PHOSPHORUS FERTILIZER NUTRIENT
 POTASSIUM FERTILIZER NUTRIENT
- ALL WORK SHALL BE DONE IN A MANNER AS TO NOT DISRUPT THE FLOW OF TRAFFIC. LANE CLOSURES SHALL ONLY BE IMPLEMENTED WHEN NECESSARY FOR SIDEWALK CONSTRUCTION NEAR THE ROADWAY OR AS DIRECTED BY THE ENGINEER. ALL TRAFFIC CONTROL WITHIN WILL COUNTY RIGHT-OF-WAY SHALL BE COORDINATED WITH THE WILL COUNTY DEPARTMENT OF HIGHWAYS.
- BELOW ARE CONTACT DETAILS FOR VARIOUS BUSINESSES AND UTILITIES THAT WILL BE AFFECTED BY THE PROJECT.

AGENCY	CONTACT PERSON	TELEPHONE NO.
NICOR	CONSTANCE LANE	(630) 388-3830
AT&T	ROBERT ELSINGA	(630) 573-5452
COMED	TIMOTHY COSLET	(815) 724-5654
VILLAGE OF FRANKFORT	ADAM NIELSEN	(815) 469-2177
COMCAST	THOMAS MUNAR	(630) 600-6316

DENOTES WORK INCLUDED IN THE COST OF OTHER ITEMS.

FILE NAME = w:\j\166800-669916628\012\microweb\CA00_Sheets\02-GenNotes.dgn



USER NAME = dennisw	DESIGNED - SLG	REVISED -
MODEL NAME = Default	DRAWN - DJW	REVISED -
PLOT SCALE = 20,0000 ' / in.	CHECKED - ARM	REVISED -
PLOT DATE = 1/29/2014	DATE - 1/21/14	REVISED -

STATE OF ILLINOIS
DEPARTMENT OF TRANSPORTATION

GENERAL NOTES

SCALE: SHEET OF SHEETS STA. TO STA.

F.A.U. RTE.	SECTION	COUNTY	TOTAL SHEETS	SHEET NO.
3757	12-00048-00-SW	WILL	15	2
CONTRACT NO. 61A32				
ILLINOIS FED. AID PROJECT				

SUMMARY OF QUANTITIES				CONST. CODE	
				100% FEDERAL	
CODE NO.	ITEM	UNIT	TOTAL QUANTITY	SAFETY	
				0021	
20200100	EARTH EXCAVATION	CU YD	267	267	
21101505	TOPSOIL EXCAVATION AND PLACEMENT	CU YD	150	150	
25000400	NITROGEN FERTILIZER NUTRIENT	POUND	20	20	
25000500	PHOSPHORUS FERTILIZER NUTRIENT	POUND	20	20	
25000600	POTASSIUM FERTILIZER NUTRIENT	POUND	20	20	
25200110	SODDING, SALT TOLERANT	SQ YD	500	500	
25200200	SUPPLEMENTAL WATERING	UNIT	15	15	
31101200	SUBBASE GRANULAR MATERIAL, TYPE B 4"	SQ YD	780	780	
42400200	PORTLAND CEMENT CONCRETE SIDEWALK 5 INCH	SQ FT	6,700	6,700	
42400800	DETECTABLE WARNINGS	SQ FT	130	130	
44000100	PAVEMENT REMOVAL	SQ YD	30	30	
44000500	COMBINATION CURB AND GUTTER REMOVAL	FOOT	30	30	
44000600	SIDEWALK REMOVAL	SQ FT	825	825	
60604400	COMBINATION CONCRETE CURB AND GUTTER, TYPE B-6.18	FOOT	30	30	

• SPECIALTY ITEM

SUMMARY OF QUANTITIES				CONST. CODE	
				100% FEDERAL	
CODE NO.	ITEM	UNIT	TOTAL QUANTITY	SAFETY	
				0021	
67100100	MOBILIZATION	L SUM	1	1	
70102622	TRAFFIC CONTROL AND PROTECTION, STANDARD 701502	L SUM	1	1	
70102635	TRAFFIC CONTROL AND PROTECTION, STANDARD 701701	L SUM	1	1	
70102640	TRAFFIC CONTROL AND PROTECTION, STANDARD 701801	L SUM	1	1	
78000400	THERMOPLASTIC PAVEMENT MARKING - LINE 6"	FOOT	155	155	
78000600	THERMOPLASTIC PAVEMENT MARKING - LINE 12"	FOOT	825	825	
78000650	THERMOPLASTIC PAVEMENT MARKING - LINE 24"	FOOT	40	40	
78300100	PAVEMENT MARKING REMOVAL	SQ FT	140	140	

• SPECIALTY ITEM

FILE NAME = S:\JUL\66800--66899\66828\012\Microa\CADD_Sheets\03-500.dgn



1170 SOUTH HOBOLT ROAD
JOLIET, ILLINOIS 60431
(815) 744-4200

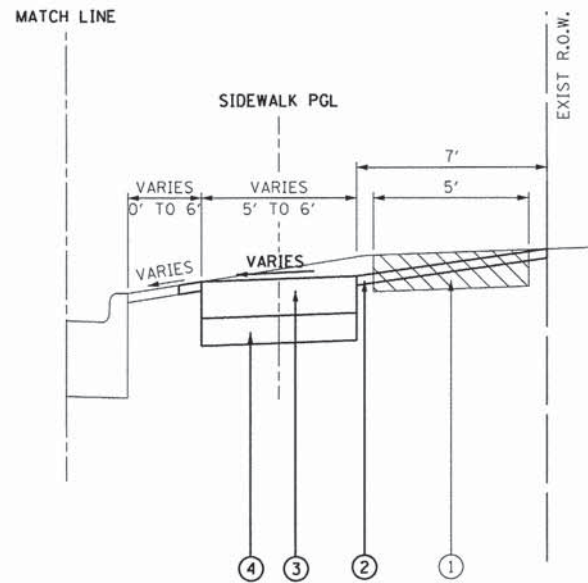
USER NAME = dennisw	DESIGNED - SLG	REVISED -
MODEL NAME = Default	DRAWN - DJW	REVISED -
PLOT SCALE = 1/8" = 1'-0"	CHECKED - ARM	REVISED -
PLOT DATE = 2/13/2014	DATE - 1/21/14	REVISED -

STATE OF ILLINOIS
DEPARTMENT OF TRANSPORTATION

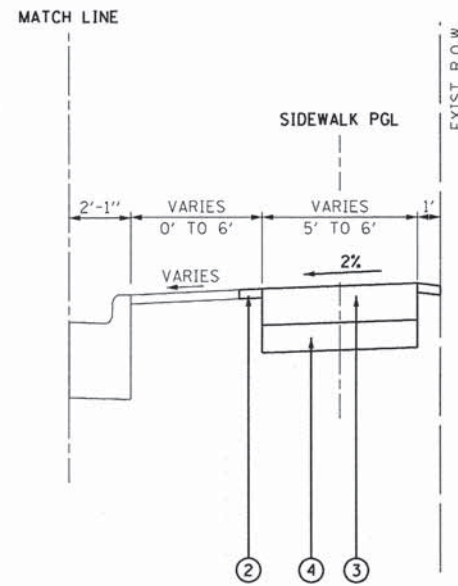
SUMMARY OF QUANTITIES

SCALE: N/A SHEET 1 OF 1 SHEETS STA. TO STA.

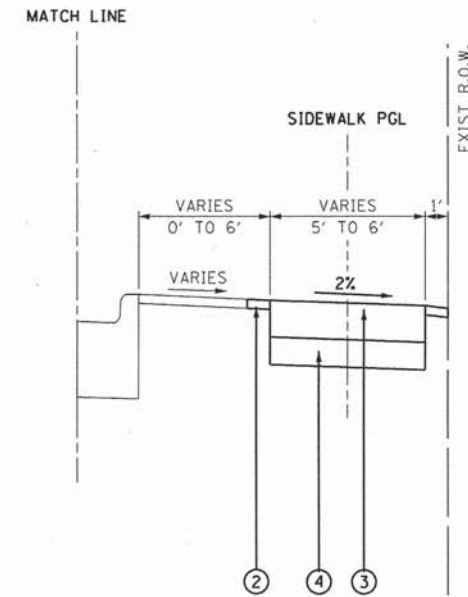
F.A.U. RTE.	SECTION	COUNTY	TOTAL SHEETS	SHEET NO.
3757	12-00048-00-SW	WILL	15	3
ILLINOIS FED. AID PROJECT			CONTRACT NO. 61A32	



PROPOSED TYPICAL SECTION
STA. 100+00 - STA. 101+50.66



PROPOSED TYPICAL SECTION
STA. 101+50.66 - STA. 101+95
STA. 105+20 - STA. 113+77.79



PROPOSED TYPICAL SECTION
STA. 101+95 - STA. 105+20

LEGEND

- ① EXISTING SIDEWALK
- ② PROP. TOPSOIL EXCAVATION AND PLACEMENT, PROP. SODDING, SALT TOLERANT
- ③ PROP. P.C.C. SIDEWALK, 5"
- ④ PROP. SUB-BASE GRANULAR MATERIAL, TYPE B, 4"

REMOVAL ITEMS

EARTHWORK SUMMARY				
LOCATION	EARTH EXCAVATION 20200100	EARTH EXCAVATION ADJUSTED FOR SHRINKAGE (25%)	EMBANKMENT	EARTHWORK BALANCE WASTE (+) OR SHORTAGE (-)
SECTION	CU YD	CU YD	CU YD	CU YD
BOTH AVE SIDEWALK	267	200	0	200
TOTAL	267	200	0	200

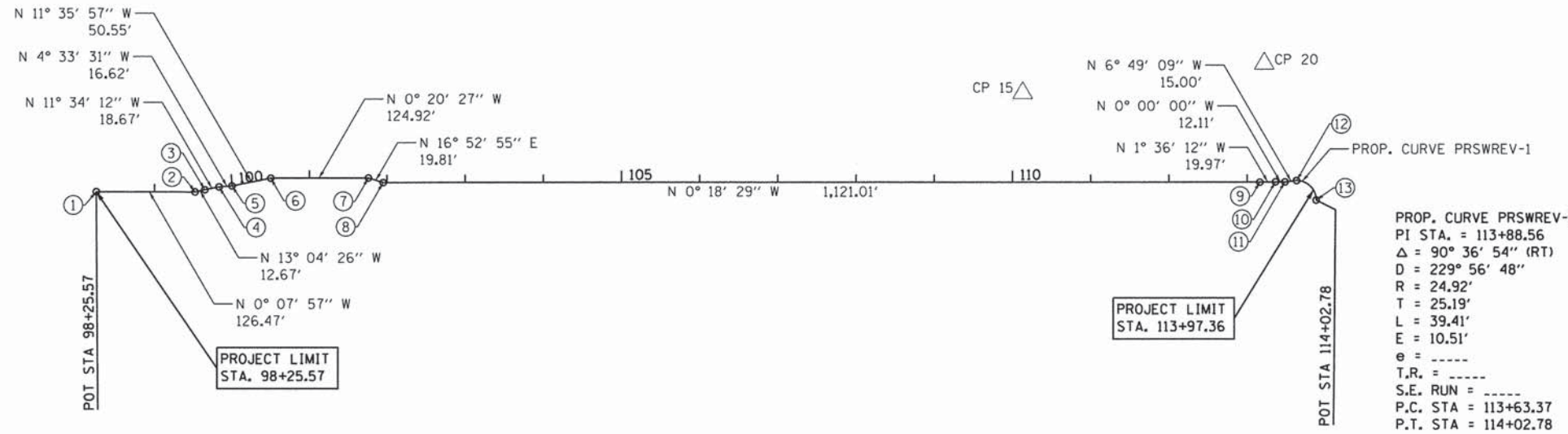
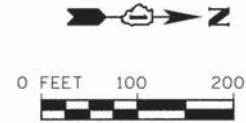
STATE OF ILLINOIS
DEPARTMENT OF TRANSPORTATION

TYPICAL SECTIONS

SCALE: SHEET OF SHEETS STA. TO STA.

F.A.U. RTE.	SECTION	COUNTY	TOTAL SHEETS	SHEET NO.
3757	12-00048-00-SW	WILL	15	4
CONTRACT NO. 61A32				
[ILLINOIS] FED. AID PROJECT				

FILE NAME = n:\g\66809--6699\6628\02\micro\c000_sheets\04-typical.dgn

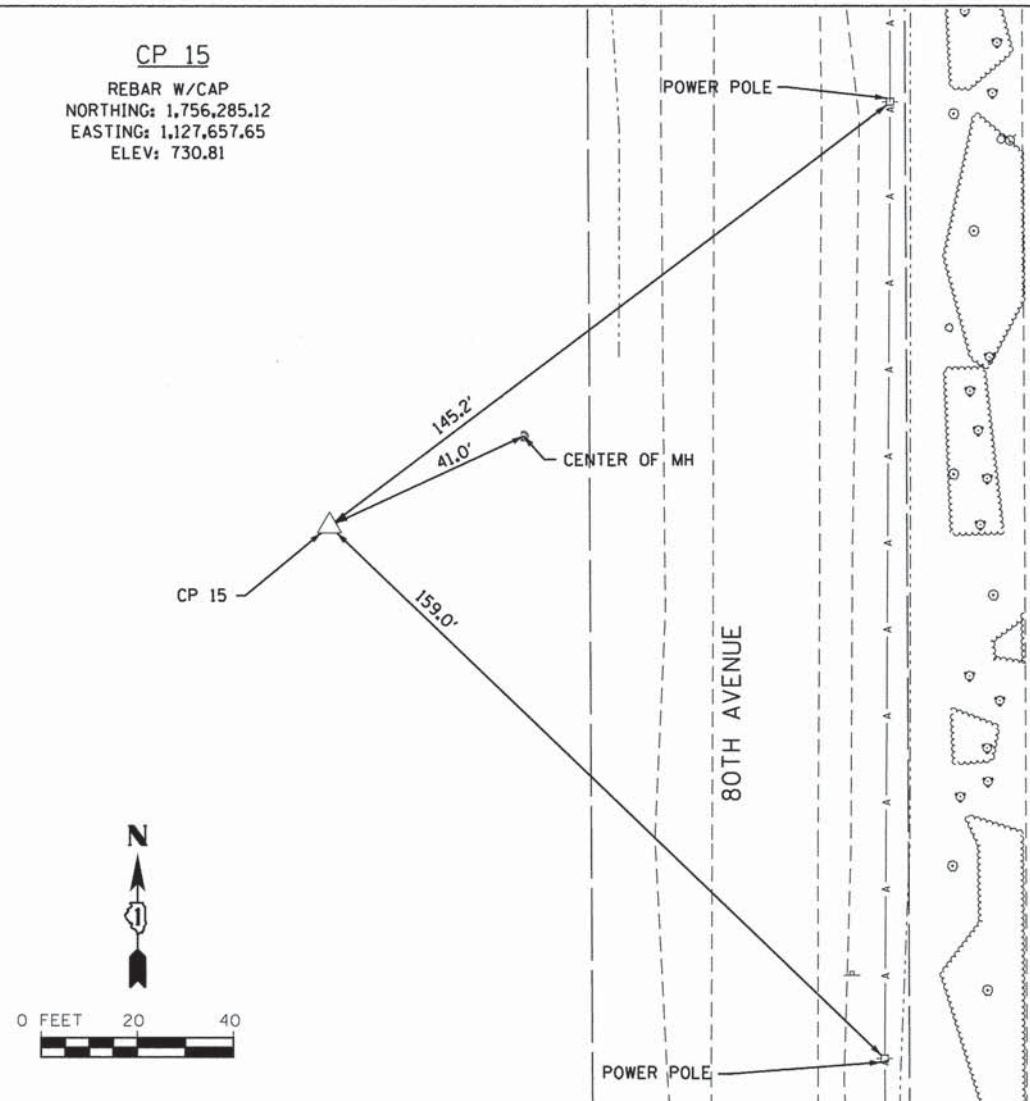
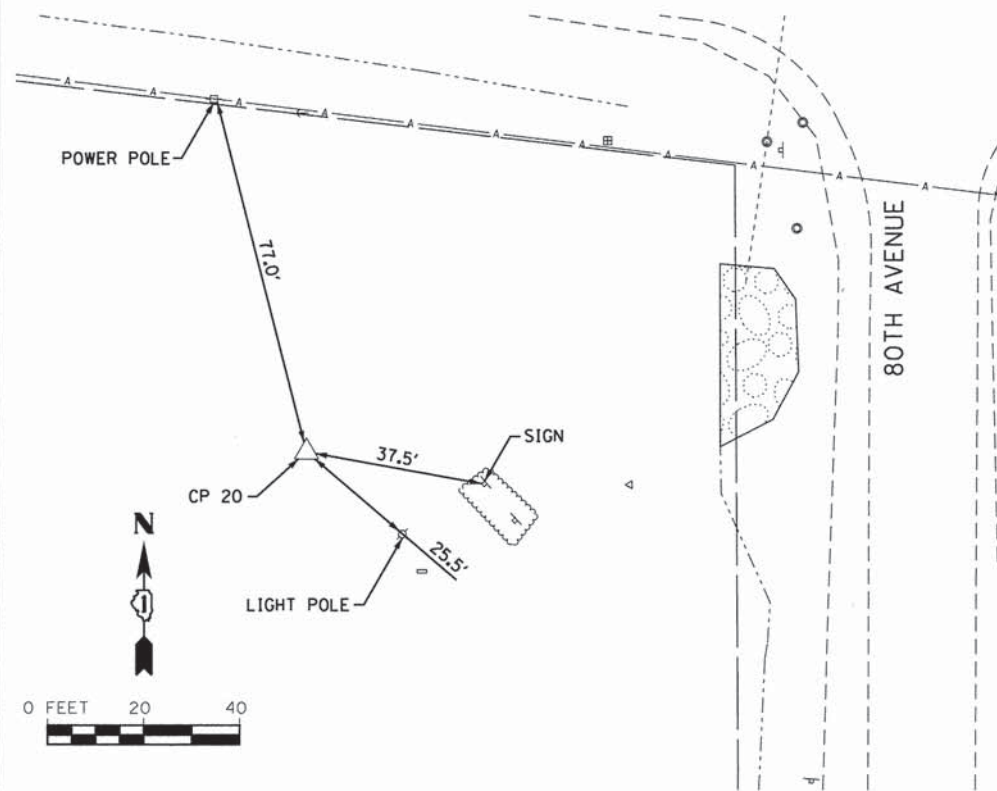


POINT	STATION	NORTHING	EASTING
1	98+25.57	1755100.94	1127789.96
2	99+52.04	1755227.41	1127789.67
3	99+64.71	1755239.75	1127786.80
4	99+83.38	1755258.04	1127783.06
5	100+00.00	1755274.61	1127781.73
6	100+50.55	1755324.13	1127771.57
7	101+75.47	1755449.04	1127770.83
8	101+95.28	1755468.00	1127776.58
9	113+16.29	1756589.00	1127770.55
10	113+36.26	1756608.95	1127769.99
11	113+48.37	1756621.07	1127769.99
12	113+63.37	1756635.97	1127768.21
13	114+02.78	1756661.12	1127793.16

PROP. CURVE PRSWREV-1
 PI STA. = 113+88.56
 $\Delta = 90^\circ 36' 54''$ (RT)
 $D = 229^\circ 56' 48''$
 $R = 24.92'$
 $T = 25.19'$
 $L = 39.41'$
 $e = 10.51'$
 $T.R. = \text{-----}$
 $S.E. RUN = \text{-----}$
 P.C. STA = 113+63.37
 P.T. STA = 114+02.78

CP 20
 REBAR W/CAP
 NORTHING: 1,756,593.70
 EASTING: 1,127,618.55
 ELEV: 730.69

CP 15
 REBAR W/CAP
 NORTHING: 1,756,285.12
 EASTING: 1,127,657.65
 ELEV: 730.81



BENCHMARK LOCATIONS

- TBM "1192"
EAST MOST CORNER OF COM ED TOWER
EL. 745.14
- TBM "1"
CHISELED "X" ON FH NORTH OF THE MAIN ENTRANCE TO
CHELSEA MIDDLE SCHOOL
EL. 732.35
- TBM "2"
CHISELED SQUARE ON LIGHT POLE BASE LOCATED ON THE
BERM AT THE SOUTHWEST CORNER OF 80TH AVENUE AND
SAUK TRAIL
EL. 733.52

TBM = TEMPORARY BENCH MARK

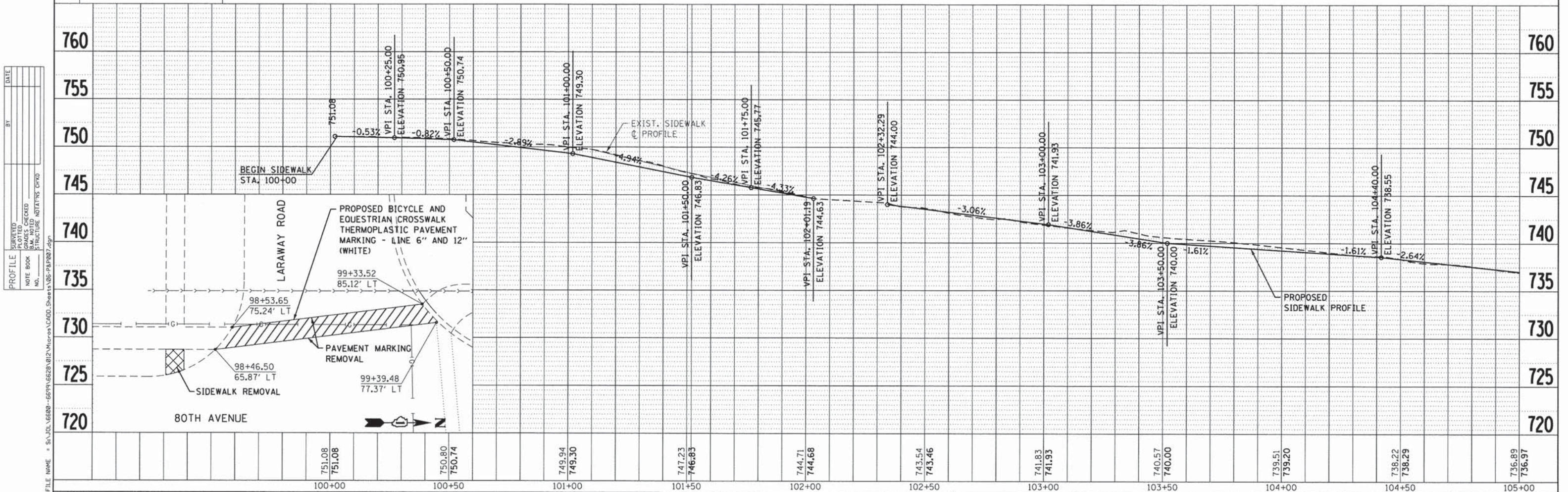
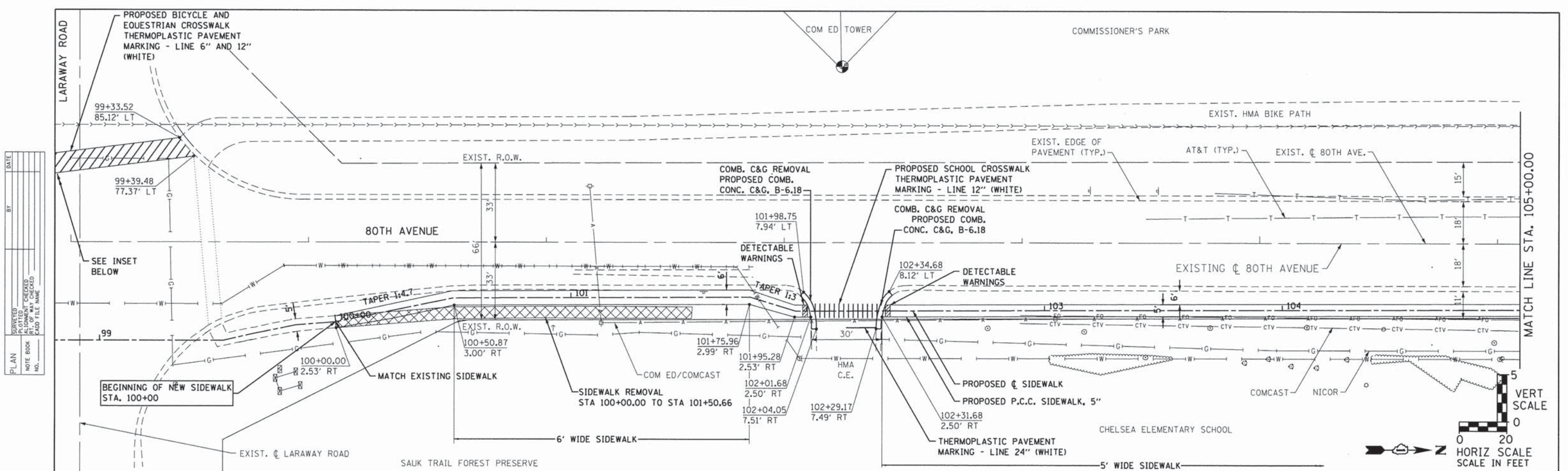
FILE NAME = s:\jg\66800--66916628\012\micro\CA00_Sheets\95-alignment.dgn

USER NAME = dennisw	DESIGNED - SLG	REVISED -
MODEL NAME = Default	DRAWN - DJW	REVISED -
PLOT SCALE = 20.0000' / 1" =	CHECKED - ARM	REVISED -
PLOT DATE = 1/29/2014	DATE - 1/21/14	REVISED -

STATE OF ILLINOIS
DEPARTMENT OF TRANSPORTATION

ALIGNMENTS, TIES, AND BENCHMARKS			
SCALE:	SHEET	OF SHEETS	STA. TO STA.

F.A.U. RTE.	SECTION	COUNTY	TOTAL SHEETS	SHEET NO.
3757	12-00048-00-SW	WILL	15	5
				CONTRACT NO. 61A32
ILLINOIS FED. AID PROJECT				



DATE	
BY	
PLANNED	
DESIGNED	
CHECKED	
NOTED	
DATE	
NO.	

DATE	
BY	
PLANNED	
DESIGNED	
CHECKED	
NOTED	
DATE	
NO.	

FILE NAME = S:\JUL\6688--6694\6628\012\Micro\ACADD_Sheets\06-P&R\007.dgn

SA STRAND ASSOCIATES*
 1170 SOUTH HOUBOLT ROAD
 JOLIET, ILLINOIS 60431
 (815) 744-4200

USER NAME = dennisw	DESIGNED - SLG	REVISED -
MODEL NAME = Default	DRAWN - DJW	REVISED -
PLOT SCALE = 20.0000' / in.	CHECKED - ARM	REVISED -
PLOT DATE = 2/13/2014	DATE - 1/21/14	REVISED -

751.08	751.08	750.80	750.74	749.94	749.30	747.23	746.83	744.71	744.68	743.54	743.46	741.83	741.93	740.57	740.00	739.51	739.20	738.22	738.29	736.89	736.97
100+00		100+50		101+00		101+50		102+00		102+50		103+00		103+50		104+00		104+50		105+00	

**STATE OF ILLINOIS
 DEPARTMENT OF TRANSPORTATION**

80TH AVENUE SIDEWALK PLAN AND PROFILE

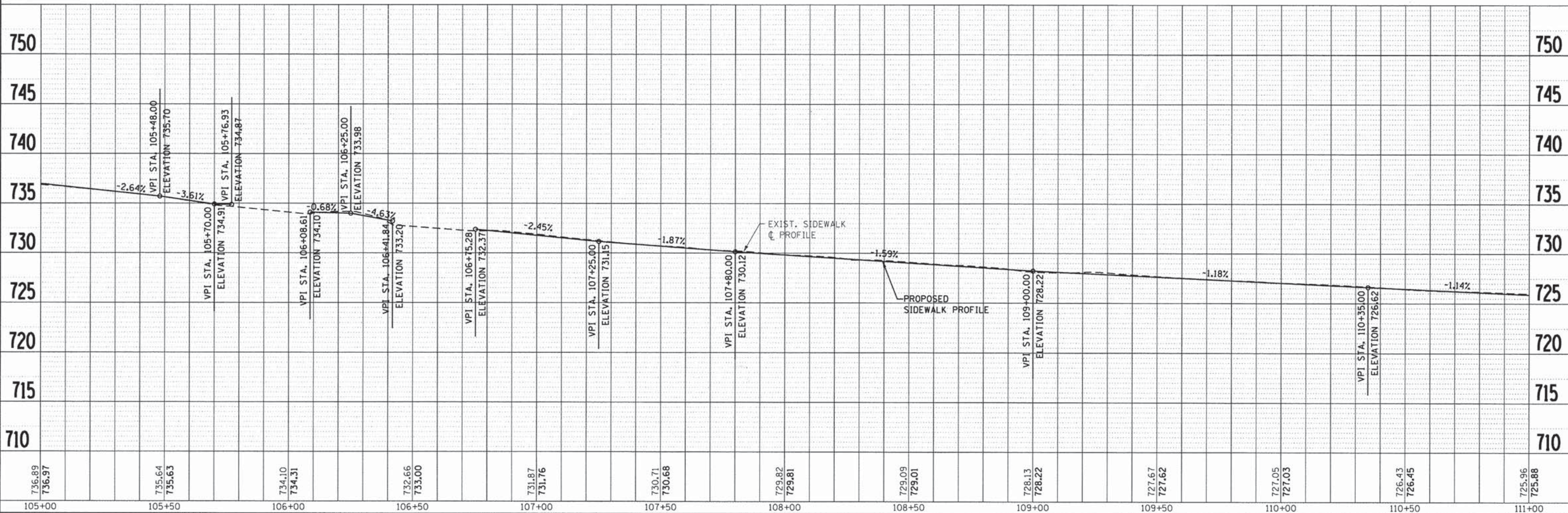
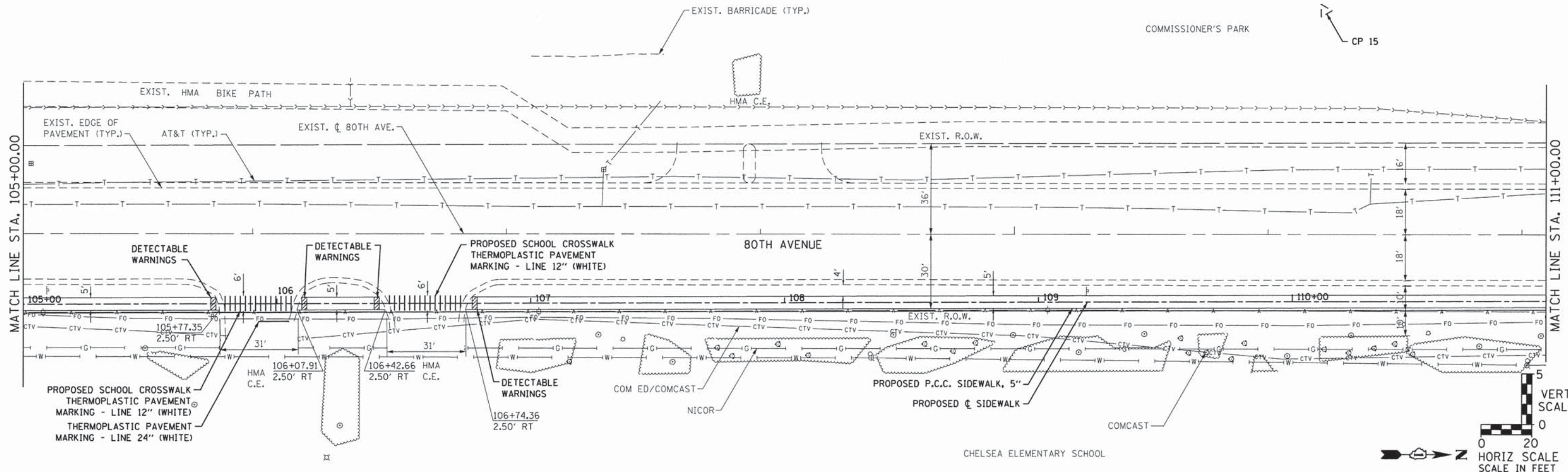
SCALE: SHEET 1 OF 3 SHEETS STA. TO STA.

F.A.U. RTE.	SECTION	COUNTY	TOTAL SHEETS	SHEET NO.
3757	12-00048-00-SW	WILL	15	6
CONTRACT NO. 61A32			ILLINOIS FED. AID PROJECT	

PLAN	SURVEYED	DATE
	PLOTTED	
	ALIGNED	
	CHECKED	
	NO. _____	
	NO. _____	
	NO. _____	

PROFILE	SURVEYED	DATE
	PLOTTED	
	GRADES CHECKED	
	STRUCTURE NOTATIONS CRVD	
	NO. _____	
	NO. _____	

FILE NAME = s:\p1\56609-6699\6628\012\mtrcos\CADD_Sheets\07-P81808.dgn



SA STRAND ASSOCIATES
1170 SOUTH HOUBOLT ROAD
JOLIET, ILLINOIS 60431
(815) 744-4200

USER NAME = dennisw	DESIGNED - SLG	REVISED -
MODEL NAME = Default	DRAWN - DJW	REVISED -
PLOT SCALE = 20.0000' / in.	CHECKED - ARM	REVISED -
PLOT DATE = 1/29/2014	DATE - 1/21/14	REVISED -

**STATE OF ILLINOIS
DEPARTMENT OF TRANSPORTATION**

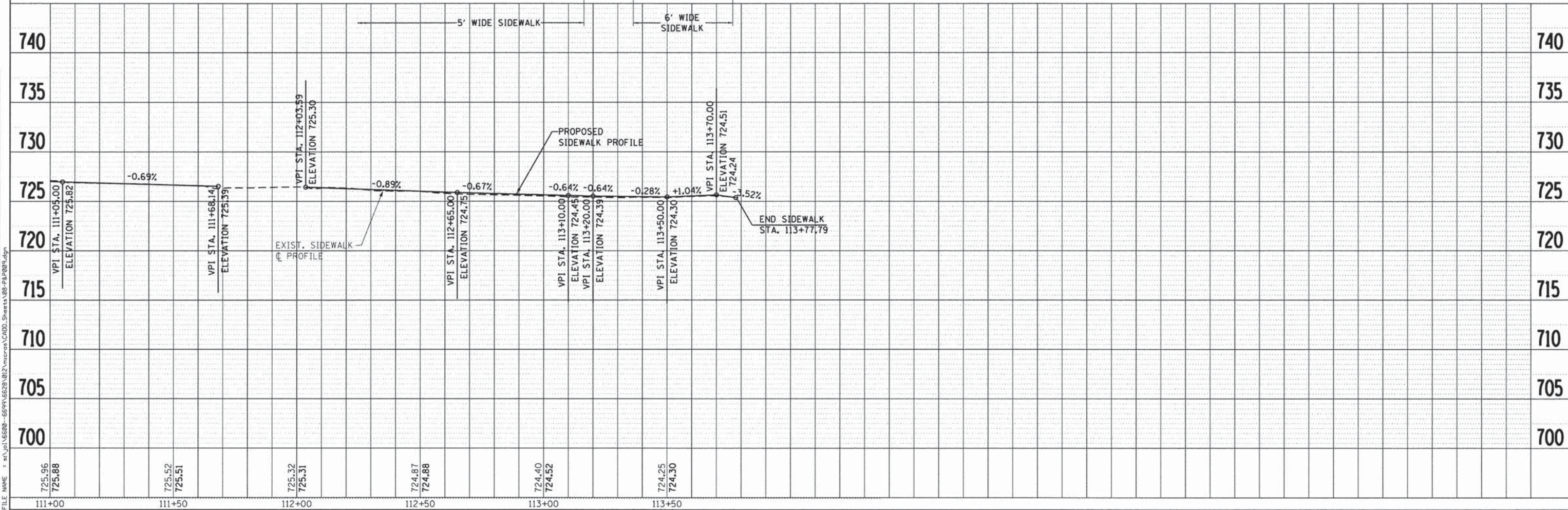
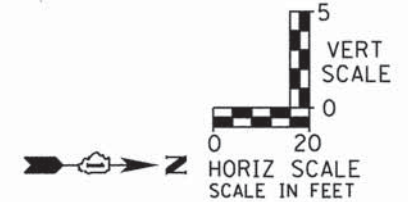
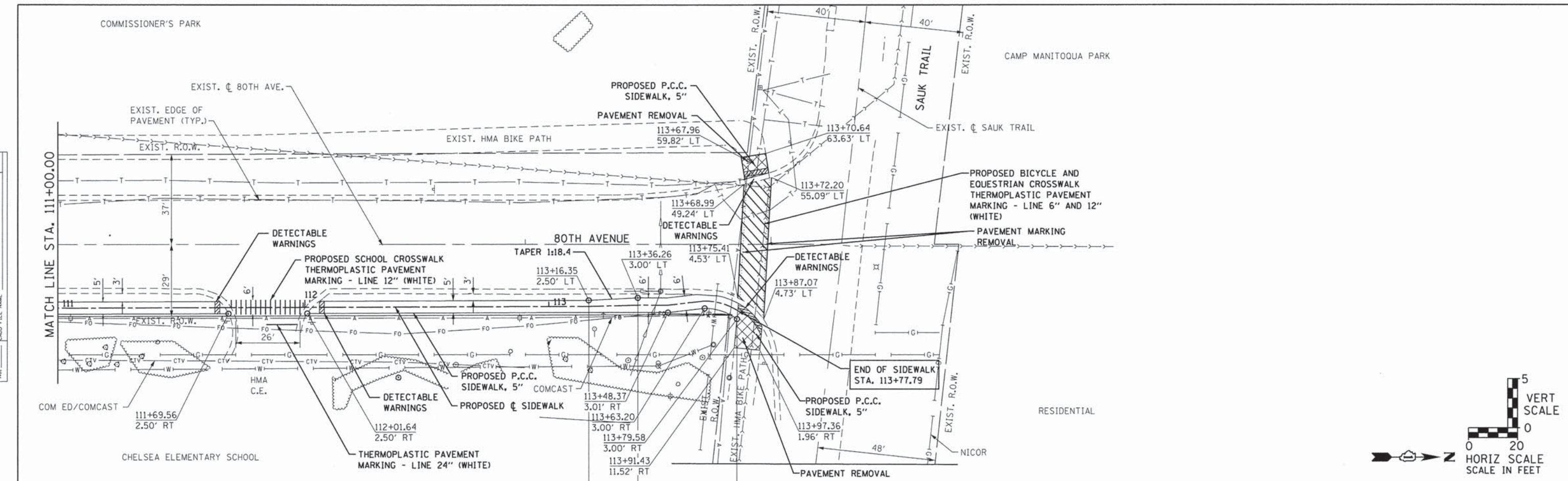
80TH AVENUE SIDEWALK PLAN AND PROFILE

SCALE: SHEET 2 OF 3 SHEETS STA. TO STA.

F.A.U. RTE. 3757	SECTION 12-00048-00-SW	COUNTY WILL	TOTAL SHEETS 15	SHEET NO. 7
CONTRACT NO. 61A32			ILLINOIS FED. AID PROJECT	

DATE	
BY	
REVISIONS	
NO.	
PLAN	
NO.	
NOTE BOOK	
NO.	
ALIGNED CHECKED	
DATE	
FILE NAME	

DATE	
BY	
REVISIONS	
NO.	
PROFILE	
NO.	
NOTE BOOK	
NO.	
STRUCTURE	
NO.	
GRADES CHECKED	
DATE	
FILE NAME	



VARIABLE - TO MEET EXISTING DIMENSIONS AND FIELD CONDITIONS (SEE NOTE ②)

PROP. CONC. CURB OR CURB AND GUTTER REPLACEMENT IN ACCORDANCE WITH STATE STANDARD 606001. (SEE NOTE ②)

SAW CUT FULL DEPTH - INCLUDED IN THE COST OF SIDEWALK, DRIVEWAY OR MEDIAN SURFACE REMOVAL PAY ITEM.

SEE STATE STANDARD 606001
EXISTING OR PROPOSED HMA SURFACE (IF APPLICABLE)

18" (450) MAX.

1/4" (5) **

EXISTING SIDEWALK, DRIVEWAY, MEDIAN SURFACE, SOD OR GROUND.

PROPOSED SIDEWALK, DRIVEWAY PAVEMENT, MEDIAN SURFACE OR SODDING SALT TOLERANT WITH TOP SOIL, 4" (100) SOD RESTORATION (SEE NOTE ①).

EXISTING CONCRETE PAVEMENT, CONCRETE BASE COURSE OR FLEXIBLE PAVEMENT

3" (75) MIN.

SUITABLE BACKFILL MATERIAL (INCLUDED IN THE COST OF CURB OR CURB AND GUTTER REMOVAL AND REPLACEMENT)

PROPOSED 3/4" (20) PREFORMED EXPANSION JOINT AT CONCRETE SIDEWALKS, DRIVEWAYS, AND MEDIANS. (INCLUDED IN THE COST OF CURB OR CURB AND GUTTER REMOVAL AND REPLACEMENT.)

- * 3" (75) MINIMUM FROM TOP AND BOTTOM OF THE CONCRETE PAVEMENT OR BASE COURSE.
- ** IF THE FINAL SURFACE OF THE PAVEMENT IS CONCRETE, THE GUTTER IS TO BE FLUSH WITH THE PAVEMENT.

UNSUITABLE SUB-BASE MATERIAL TO BE REMOVED, IF DIRECTED BY THE ENGINEER, SHALL BE REPLACED WITH EITHER SUB-BASE GRANULAR MATERIAL, TYPE B OR ADDITIONAL THICKNESS OF CONCRETE.

REMOVAL AND REPLACEMENT 4" (100) OR LESS IS INCLUDED IN THE COST OF CURB OR CURB AND GUTTER REMOVAL AND REPLACEMENT.

REMOVAL AND REPLACEMENT IN EXCESS OF 4" (100) WILL BE PAID FOR IN ACCORDANCE WITH ARTICLE 109.04 OF THE STANDARD SPECIFICATIONS.

NOTE: ① SIDEWALK, DRIVEWAY PAVEMENT OR MEDIAN SURFACE SHALL BE SIMILAR TO THE MATERIAL BEING REMOVED AND WILL BE PAID FOR SEPARATELY.
SODDING, SALT TOLERANT AND TOP SOIL, FURNISH AND PLACE 4" WILL BE PAID FOR SEPARATELY.

- ② FERTILIZER FOR THE PLACEMENT OF THE SOD IS NOT REQUIRED
- ③ CURB OR CURB AND GUTTER REPLACEMENT SHALL MATCH THE SHAPE OF THE EXISTING CURB OR CURB AND GUTTER UNLESS OTHERWISE SPECIFIED.
- ④ FOR CURB OR CURB AND GUTTER REMOVAL AND REPLACEMENT ADJACENT TO FLEXIBLE PAVEMENT DELETE EPOXY COATED TIE BARS.

PROPOSED #6 (20) EPOXY COATED TIE BARS 24" (600) LONG AT 24" (600) CENTERS WILL NOT BE PAID FOR SEPARATELY. DELETE EPOXY COATED TIE BARS IF EXISTING TIE BARS ARE USUABLE AS DETERMINED BY THE ENGINEER. (SEE NOTE ③).

⑤ LONGITUDINAL BARS, IF ENCOUNTERED IN THE EXISTING CURB OR CURB AND GUTTER, ARE NOT TO BE REPLACED. CUTTING AND REMOVING LONGITUDINAL BARS SHALL BE INCLUDED IN THE COST OF CURB OR CURB AND GUTTER REMOVAL AND REPLACEMENT.

⑥ THE COST OF HMA SURFACE REMOVAL IN THE EXISTING GUTTER FLAG SHALL BE INCLUDED IN THE COST OF THE CURB AND GUTTER REMOVAL AND REPLACEMENT.

BASIS OF PAYMENT:
THIS WORK WILL BE PAID FOR AT THE CONTRACT UNIT PRICE PER FOOT (METER) FOR "CURB REMOVAL AND REPLACEMENT" OR "COMBINATION CONCRETE CURB AND GUTTER REMOVAL AND REPLACEMENT".

⑦ THE REMOVAL AND REPLACEMENT OF THE EXISTING CURB OR CURB AND GUTTER SHALL BE DONE IN ACCORDANCE WITH THE APPLICABLE PORTIONS OF SECTION 440 AND 606 OF THE STANDARD SPECIFICATIONS.

⑧ THE LOCATIONS OF REMOVAL AND REPLACEMENT OF EXISTING CURB OR CURB AND GUTTER SHALL BE DETERMINED BY THE RESIDENT ENGINEER AT THE TIME OF CONSTRUCTION.

CURB OR CURB AND GUTTER REMOVAL AND REPLACEMENT

ALL DIMENSIONS ARE IN INCHES (MILLIMETERS) UNLESS OTHERWISE SHOWN.

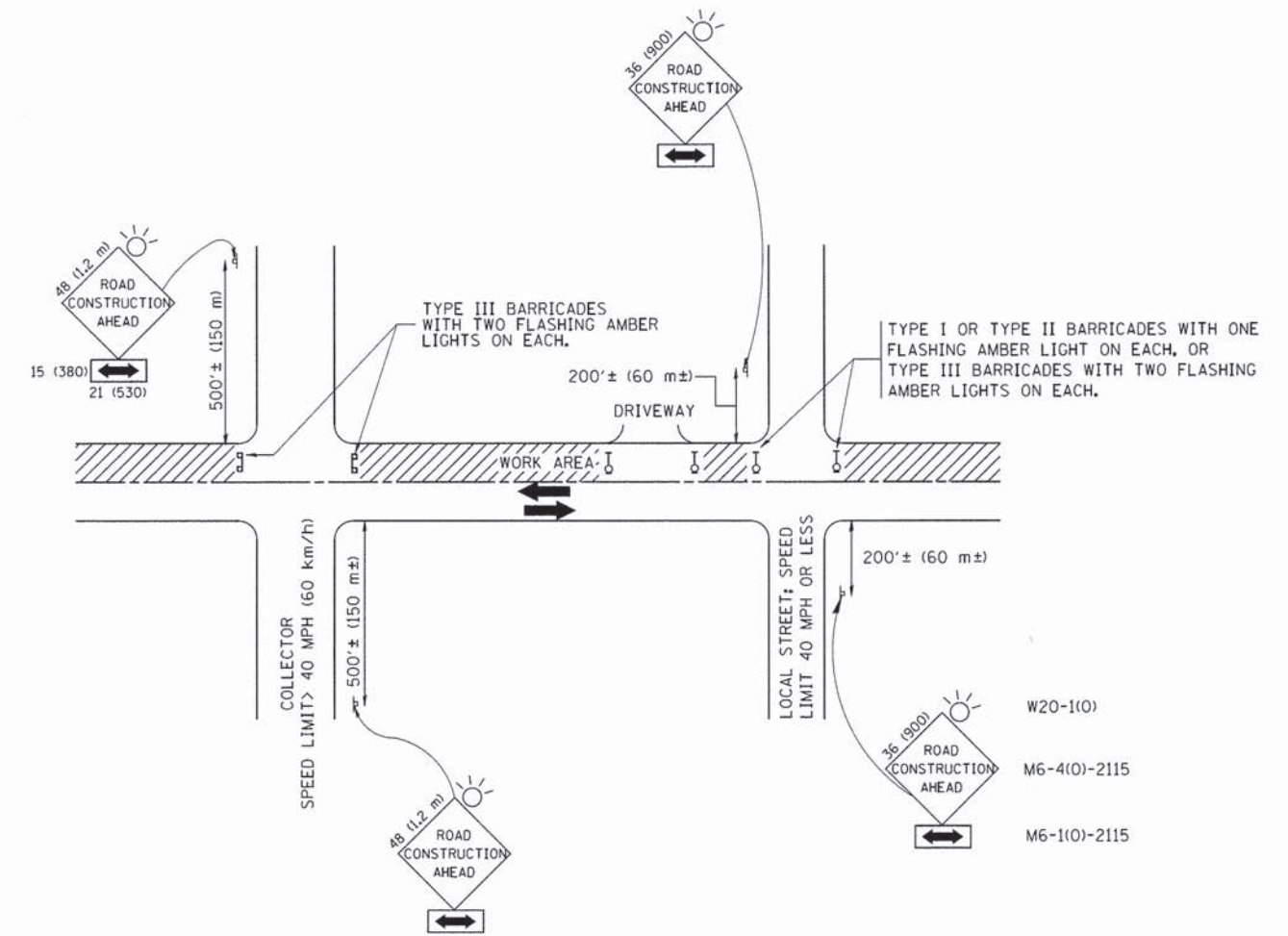
STATE OF ILLINOIS
DEPARTMENT OF TRANSPORTATION

CURB OR CURB AND GUTTER
REMOVAL AND REPLACEMENT

FILE NAME =	USER NAME = drsvakosgn	DESIGNED - A. HOUSEH	REVISED - R. SHAH 10-03-96
cc:\pwwork\pwwork\drsvakosgn\108315\bd24.dgn		DRAWN -	REVISED - A. ABBAS 03-21-97
PLOT SCALE = 50.000 1/8" IN.		CHECKED -	REVISED - M. GOMEZ 01-22-01
PLOT DATE = 12/15/2009		DATE - 03-11-94	REVISED - R. BORO 12-15-09

SCALE: NONE	SHEET NO. 1 OF 1 SHEETS	STA.	TO STA.
-------------	-------------------------	------	---------

F.A.U. RTE.	SECTION	COUNTY	TOTAL SHEETS	SHEET NO.
3757	12-00048-00-SW	WILL	15	9
BD600-06 (BD-24)			CONTRACT NO.	
FED. ROAD DIST. NO. 1 ILLINOIS FED. AID PROJECT				



TRAFFIC CONTROL AND PROTECTION FOR SIDE ROADS, INTERSECTIONS, AND DRIVEWAYS

NOTES:

A. FOR NO LANE RESTRICTION ON THE SIDE ROAD OR DRIVEWAYS

1. SIDE ROAD WITH A SPEED LIMIT OF 40 MPH (60 km/h) OR LESS AS SHOWN ON THE DRAWING AND AS DIRECTED BY THE ENGINEER:
 - a) ONE ROAD CONSTRUCTION AHEAD SIGN 36 x 36 (900x900) WITH A FLASHER AND FLAG MOUNTED ON IT APPROXIMATELY 200' (60 m) IN ADVANCE OF THE MAIN ROUTE.
 - b) THE CLOSED PORTION OF THE MAIN ROUTE SHALL BE PROTECTED BY BLOCKING WITH TYPE I, TYPE II OR TYPE III BARRICADES, 1/3 OF THE CROSS SECTION OF THE CLOSED PORTION.
2. SIDE ROAD WITH A SPEED LIMIT GREATER THAN 40 MPH (60 km/h) AS SHOWN ON THE DRAWING AND AS DIRECTED BY THE ENGINEER:
 - a) ONE ROAD CONSTRUCTION AHEAD SIGN 48 x 48 (1.2 m x 1.2 m) WITH A FLASHER MOUNTED ON IT APPROXIMATELY 500' (150 m) IN ADVANCE OF THE MAIN ROUTE.
 - b) THE CLOSED PORTION OF THE MAIN ROUTE SHALL BE PROTECTED BY BLOCKING WITH TYPE III BARRICADES, 1/2 OF THE CROSS SECTION OF THE CLOSED PORTION.
3. WHEN THE SIDE ROAD LIES BETWEEN THE BEGINNING OF THE MAINLINE SIGNING AND THE WORK ZONE, A SINGLE HEADED ARROW (M6-1) SHALL BE USED IN LIEU OF THE DOUBLE HEADED ARROW (M6-4).

B. FOR A LANE CLOSURE ON A SIDE ROAD OR DRIVEWAY:

USE APPLICABLE PORTIONS OF THE TYPICAL APPLICATION OF TRAFFIC CONTROL DEVICES (STD. 701501, STD. 701606 OR THE APPROPRIATE STANDARD). THE SPACING OF SIGNS AND BARRICADES SHALL BE ADJUSTED FOR FIELD CONDITIONS AS DIRECTED BY THE ENGINEER. THE DIRECTIONAL ARROW SHALL BE COVERED OR REMOVED WHEN NO LONGER CONSISTENT WITH THE SIDE ROAD LANE CLOSURE.

C. ADVANCE WARNING SIGNS ARE TO BE OMITTED ON DRIVEWAY UNLESS OTHERWISE NOTED.

D. THE TRAFFIC CONTROL AND PROTECTION FOR SIDE ROADS, INTERSECTIONS, AND DRIVEWAYS SHALL BE INCIDENTAL TO THE COST OF SPECIFIED TRAFFIC CONTROL STANDARDS OR ITEMS.

All dimensions are in millimeters (inches) unless otherwise shown.

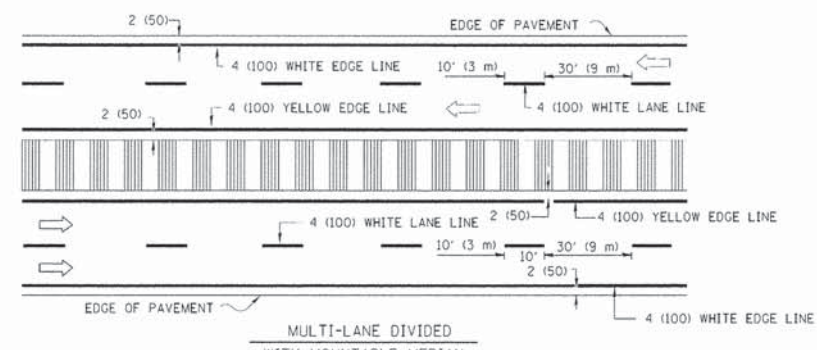
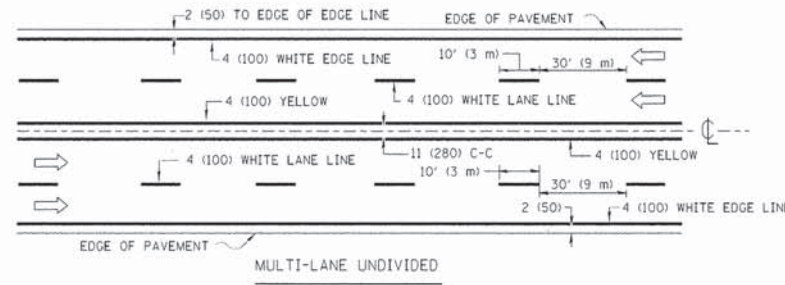
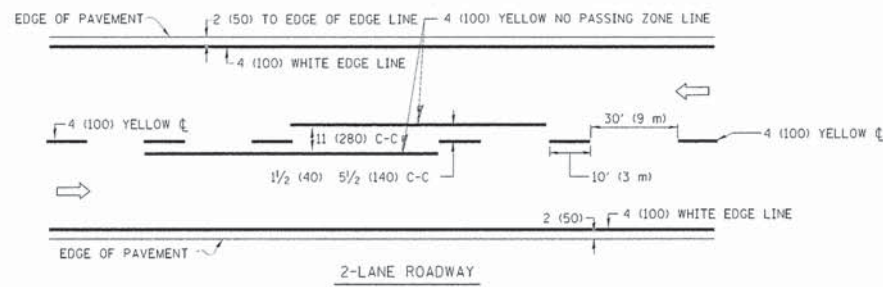
FILE NAME = W:\diststd\22x34\tc10.dgn	USER NAME = geglent	DESIGNED - LHA	REVISED - J. OBERLE 10-18-95
		DRAWN -	REVISED - A. HOUSEH 03-06-96
		CHECKED -	REVISED - A. HOUSEH 10-15-96
		DATE - 06-89	REVISED - T. RAMMACHER 01-06-00

STATE OF ILLINOIS
DEPARTMENT OF TRANSPORTATION

TRAFFIC CONTROL AND PROTECTION FOR
SIDE ROADS, INTERSECTIONS, AND DRIVEWAYS

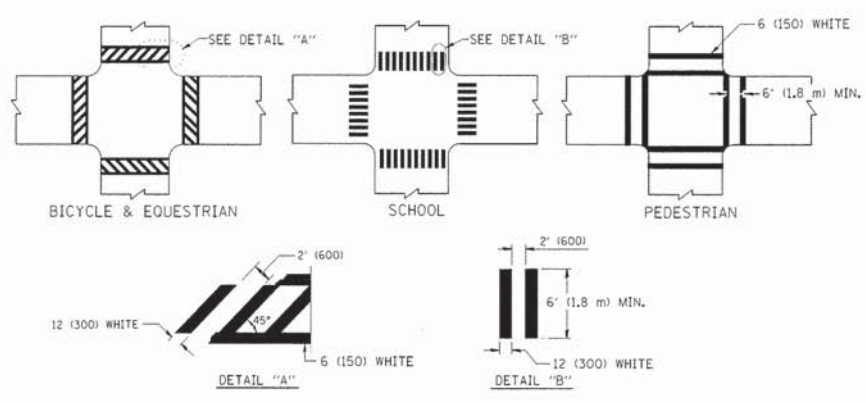
SCALE: NONE SHEET NO. 1 OF 1 SHEETS STA. TO STA.

F.A.U. RTE.	SECTION	COUNTY	TOTAL SHEETS	SHEET NO.
3757	12-00048-00-SW	WILL	15	10
TC-10			CONTRACT NO.	
FED. ROAD DIST. NO. 1 ILLINOIS FED. AID PROJECT				

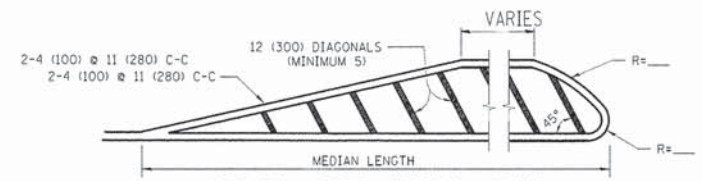
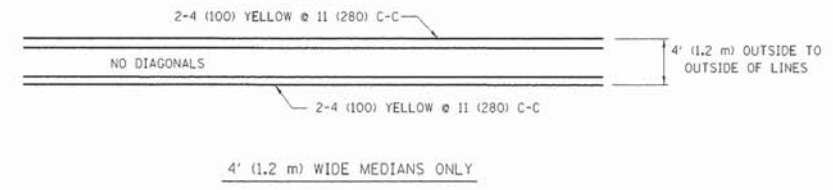


NOTE: MEDIANS WITH BARRIER CURB DO NOT REQUIRE AN EDGE LINE

TYPICAL LANE AND EDGE LINE MARKING

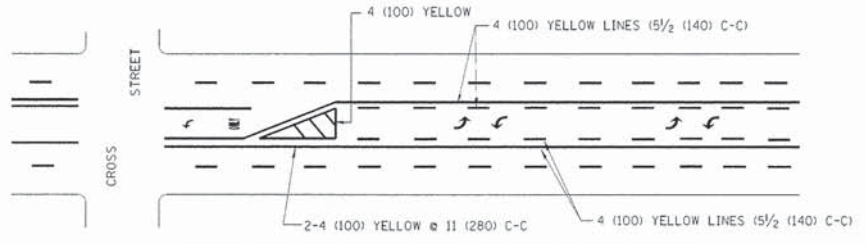


TYPICAL CROSSWALK MARKING

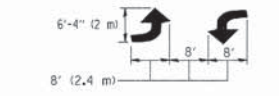


FOR MEDIAN LENGTHS WHERE DIAGONAL SPACING CANNOT BE ATTAINED, USE 5 (FIVE) EQUALLY SPACED DIAGONAL LINES.
 DIAGONAL LINE SPACING: 50' (15 m) C-C (LESS THAN 30MPH (50 km/h))
 75' (25 m) C-C 30MPH (50 km/h) TO 45MPH (70 km/h)
 150' (45 m) C-C (MORE THAN 45MPH (70 km/h))

MEDIANS OVER 4' (1.2 m) WIDE

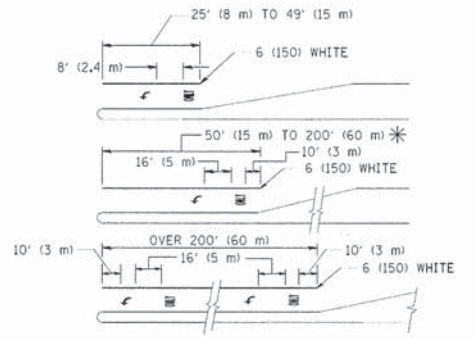


A MINIMUM OF TWO PAIRS OF TURN ARROWS SHALL BE USED, WHITE IN COLOR. ADDITIONAL PAIRS SHALL BE PLACED AT 200' (60 m) TO 300' (90 m) INTERVALS.



MEDIAN WITH TWO-WAY LEFT TURN LANE

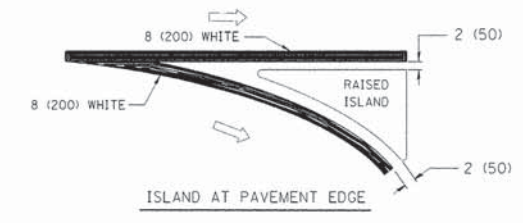
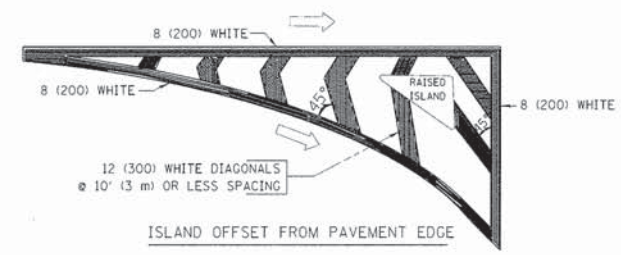
TYPICAL PAINTED MEDIAN MARKING



FULL SIZE LETTERS 8' (2.4 m) AND ARROWS SHALL BE USED.
 * AREA = 15.6 SQ. FT. (1.5 m²) ONLY AREA = 20.8 SQ. FT. (1.9 m²)
 * TURN LANES IN EXCESS OF 400' (120 m) IN LENGTH MAY HAVE AN ADDITIONAL SET OF ARROW - "ONLY" INSTALLED MIDWAY BETWEEN THE OTHER TWO SETS OF ARROW - "ONLY".

TYPICAL LEFT (OR RIGHT) TURN LANE

TYPICAL TURN LANE MARKING



TYPICAL ISLAND MARKING

TYPE OF MARKING	WIDTH OF LINE	PATTERN	COLOR	SPACING / REMARKS
CENTERLINE ON 2 LANE PAVEMENT	4 (100)	SKIP-DASH	YELLOW	10' (3 m) LINE WITH 30' (9 m) SPACE
CENTERLINE ON MULTI-LANE UNDIVIDED PAVEMENT	2 @ 4 (100)	SOLID	YELLOW	11 (280) C-C
NO PASSING ZONE LINES: FOR ONE DIRECTION FOR BOTH DIRECTIONS	4 (100) 2 @ 4 (100)	SOLID SOLID	YELLOW YELLOW	5/2 (140) C-C FROM SKIP-DASH CENTERLINE 11 (280) C-C OMIT SKIP-DASH CENTERLINE BETWEEN
LANE LINES	4 (100) 5 (125) ON FREEWAYS	SKIP-DASH SKIP-DASH	WHITE WHITE	10' (3 m) LINE WITH 30' (9 m) SPACE
DOTTED LINES (EXTENSIONS OF CENTER, LANE OR TURN LANE MARKINGS)	SAME AS LINE BEING EXTENDED	SKIP-DASH	SAME AS LINE BEING EXTENDED	2' (600) LINE WITH 6' (1.8 m) SPACE
EDGE LINES	4 (100)	SOLID	YELLOW-LEFT WHITE-RIGHT	OUTLINE MOUNTABLE MEDIANS IN YELLOW; EDGE LINES ARE NOT USED NEXT TO BARRIER CURB
TURN LANE MARKINGS	6 (150) LINE; FULL SIZE LETTERS & SYMBOLS (8' (2.4m))	SOLID	WHITE	SEE TYPICAL TURN LANE MARKING DETAIL
TWO WAY LEFT TURN MARKING	2 @ 4 (100) EACH DIRECTION 8' (2.4m) LEFT ARROW	SKIP-DASH AND SOLID IN PAIRS	YELLOW WHITE	10' (3 m) LINE WITH 30' (9 m) SPACE FOR SKIP-DASH; 5/2 (140) C-C BETWEEN SOLID LINE AND SKIP-DASH LINE SEE TYPICAL TWO-WAY LEFT TURN MARKING DETAIL
CROSSWALK LINES (PEDESTRIAN) A. DIAGONALS (BIKE & EQUESTRIAN) B. LONGITUDINAL BARS (SCHOOL)	2 @ 6 (150) 12 (300) @ 45° 12 (300) @ 90°	SOLID SOLID SOLID	WHITE WHITE WHITE	NOT LESS THAN 6' (1.8 m) APART 2' (600) APART 2' (600) APART SEE TYPICAL CROSSWALK MARKING DETAILS.
STOP LINES	24 (600)	SOLID	WHITE	PLACE 4' (1.2 m) IN ADVANCE OF AND PARALLEL TO CROSSWALK, IF PRESENT. OTHERWISE, PLACE AT DESIRED STOPPING POINT, PARALLEL TO CROSSROAD CENTERLINE, WHERE POSSIBLE
PAINTED MEDIANS	2 @ 4 (100) WITH 12 (300) DIAGONALS @ 45° NO DIAGONALS USED FOR 4' (1.2 m) WIDE MEDIANS	SOLID	YELLOW; TWO WAY TRAFFIC WHITE; ONE WAY TRAFFIC	11 (280) C-C FOR THE DOUBLE LINE SEE TYPICAL PAINTED MEDIAN MARKING.
CORE MARKING AND CHANNELIZING LINES	8 (200) WITH 12 (300) DIAGONALS @ 45°	SOLID	WHITE	DIAGONALS: 15' (4.5 m) C-C (LESS THAN 30MPH (50 km/h)) 20' (6 m) C-C 30MPH (50 km/h) TO 45MPH (70 km/h) 30' (9 m) C-C (OVER 45MPH (70 km/h))
RAILROAD CROSSING	24 (600) TRANSVERSE LINES; "RR" IS 6' (1.8 m) LETTERS; 15 (400) LINE FOR "X"	SOLID	WHITE	SEE STATE STANDARD 780001 AREA OF: "R"=3.6 SQ. FT. (0.33 m ²) EACH "X"=54.0 SQ. FT. (5.0 m ²)
SHOULDER DIAGONALS	12 (300) @ 45°	SOLID	WHITE - RIGHT YELLOW - LEFT	50' (15 m) C-C (LESS THAN 30MPH (50 km/h)) 75' (25 m) C-C 30 MPH (50 km/h) TO 45MPH (70 km/h) 150' (45 m) C-C (OVER 45MPH (70 km/h))

FOR FURTHER DETAILS ON PAVEMENT MARKING REFER TO STANDARD SPECIFICATIONS FOR ROAD AND BRIDGE CONSTRUCTION AND STATE STANDARD 780001.

All dimensions are in inches (millimeters) unless otherwise shown.

FILE NAME =	USER NAME =	DESIGNED - EVERS	REVISED -T. RAMMACHER 10-27-94
ts:\pw\work\pavdot\dravakosgr\J0108315\so	3.dgn	DRAWN -	REVISED -C. JUCIUS 09-09-09
		PLOT SCALE = 52.022' / IN.	CHECKED -
		PLOT DATE = 9/9/2007	DATE - 03-19-90

STATE OF ILLINOIS
DEPARTMENT OF TRANSPORTATION

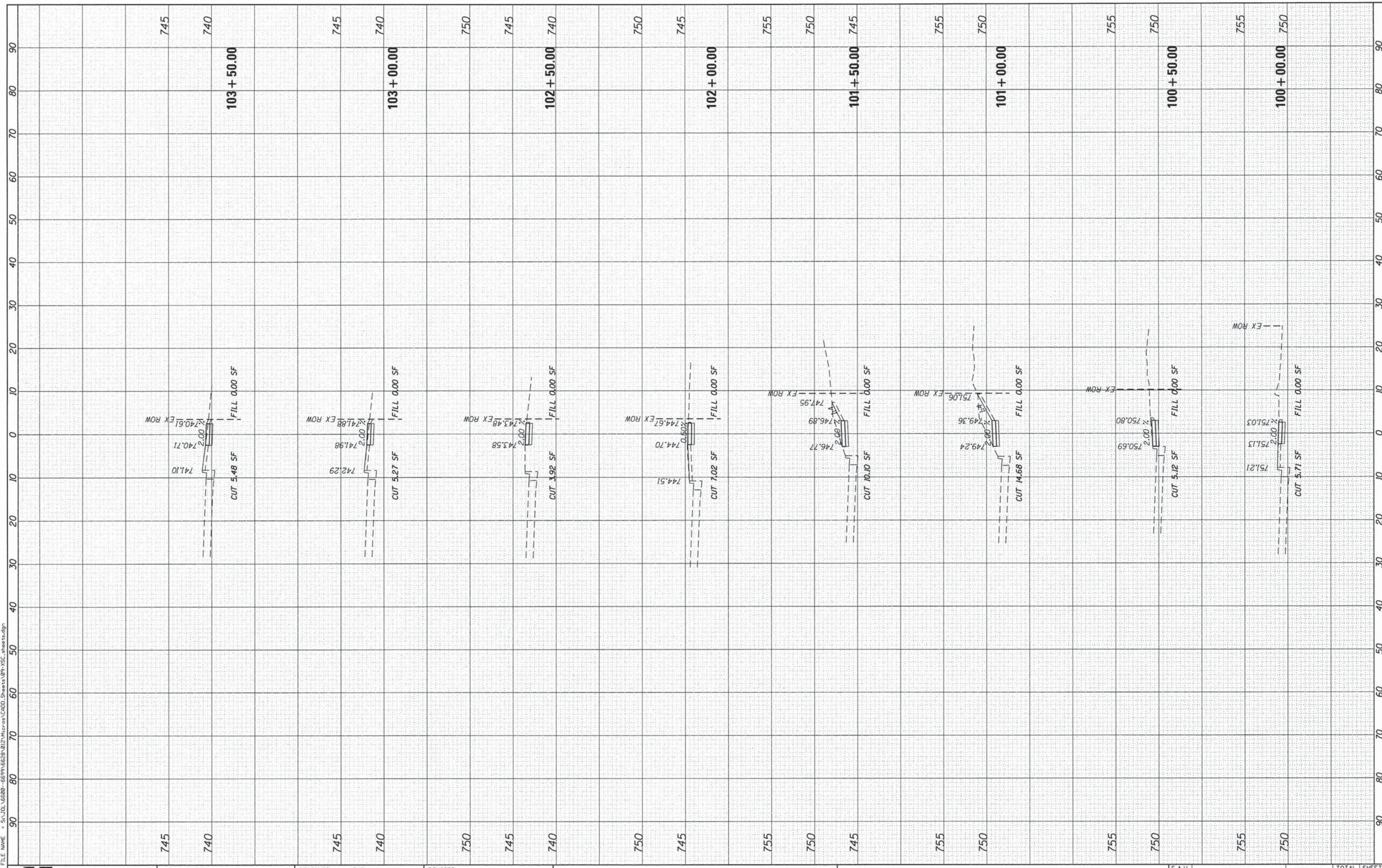
DISTRICT ONE			
TYPICAL PAVEMENT MARKINGS			
SCALE: NONE	SHEET NO. 1 OF 1 SHEETS	STA.	TO STA.

F.A.U. RTE.	SECTION	COUNTY	TOTAL SHEETS	SHEET NO.
3757	12-00048-00-SW	WILL	15	11
TC-13		CONTRACT NO.		
FED. ROAD DIST. NO. 1 ILLINOIS FED. AID PROJECT				

FINAL SURVEY	SURVEYED	BY	DATE
NOTE BOOK	PLOTTED		
NO.	TEMPLATE		
	AREAS		
	CHECKED		

ORIGINAL SURVEY	SURVEYED	BY	DATE
NOTE BOOK	PLOTTED		
NO.	TEMPLATE		
	AREAS		
	CHECKED		

FILE NAME = S:\JUL\6600-66\94625\012\Victor\CD01\Sheets\091-XS-CrossSections.dgn



USER NAME = demrisw
 MODEL NAME = Default
 PLOT SCALE = 10.0000' / in.
 PLOT DATE = 1/29/2014

DESIGNED - SLG
 DRAWN - DJW
 CHECKED - ARM
 DATE - 1/21/14

REVISED -
 REVISED -
 REVISED -
 REVISED -

STATE OF ILLINOIS
 DEPARTMENT OF TRANSPORTATION

80TH AVENUE SIDEWALK CROSS SECTIONS

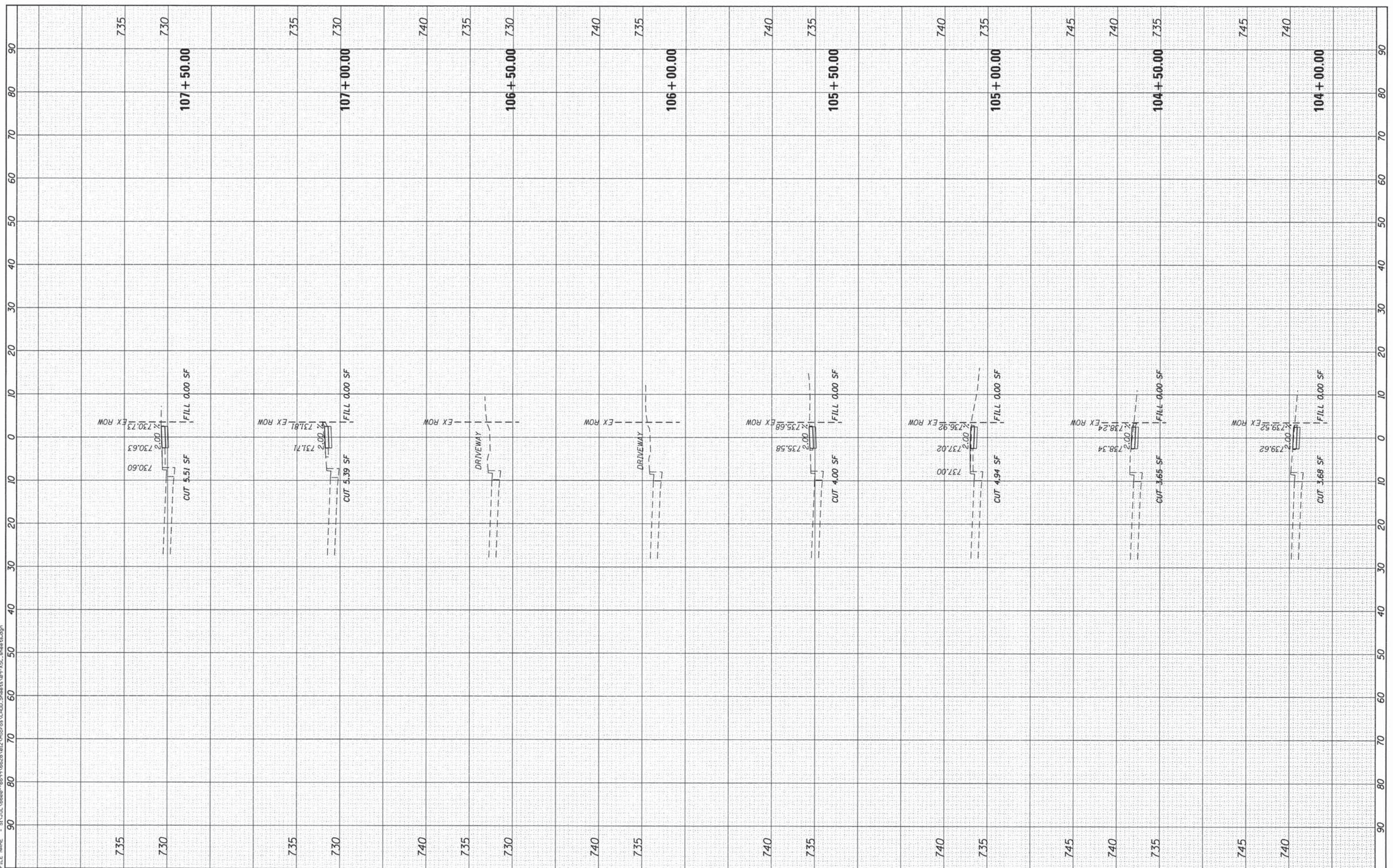
SCALE: 10'-H 5'-V SHEET 1 OF 4 SHEETS STA. 100+00.00 TO STA. 103+50.00

F.A.U. RTE. 3757	SECTION 12-00048-00-SW	COUNTY WILL	TOTAL SHEETS 15	SHEET NO. 12
CONTRACT NO. 61A32			[ILLINOIS] FED. AID PROJECT	

FINAL SURVEY	SURVEYED	DATE
NOTE BOOK	PLOTTED	BY
NO.	TEMPLATE	
	AREAS CHECKED	
	AREAS CHECKED	

ORIGINAL SURVEY	SURVEYED	DATE
NOTE BOOK	PLOTTED	BY
NO.	TEMPLATE	
	AREAS CHECKED	
	AREAS CHECKED	

FILE NAME = S:\JUL16600-6695\6628\12\12\MicroStation\4000_Sheets\VP-XSC_sheets.dgn



SA STRAND ASSOCIATES*
1170 SOUTH HOBOLT ROAD
JOLIET, ILLINOIS 60431
(815) 744-4200

USER NAME = dennisw	DESIGNED - SLG	REVISED -
MODEL NAME = Default	DRAWN - DJW	REVISED -
PLOT SCALE = 10.0000' / in.	CHECKED - ARM	REVISED -
PLOT DATE = 1/29/2014	DATE - 1/21/14	REVISED -

**STATE OF ILLINOIS
DEPARTMENT OF TRANSPORTATION**

80TH AVENUE SIDEWALK CROSS SECTIONS

SCALE: 10-H 5-V SHEET 2 OF 4 SHEETS STA. 104+00.00 TO STA. 107+50.00

F.A.U. RTE.	SECTION	COUNTY	TOTAL SHEETS	SHEET NO.
3757	12-00048-00-SW	WILL	15	13
				CONTRACT NO. 61A32
ILLINOIS FED. AID PROJECT				

