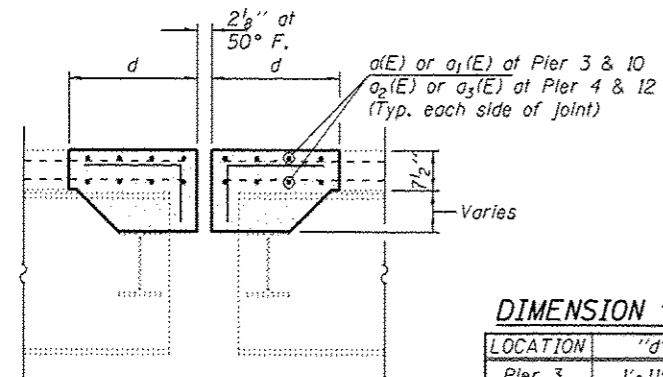


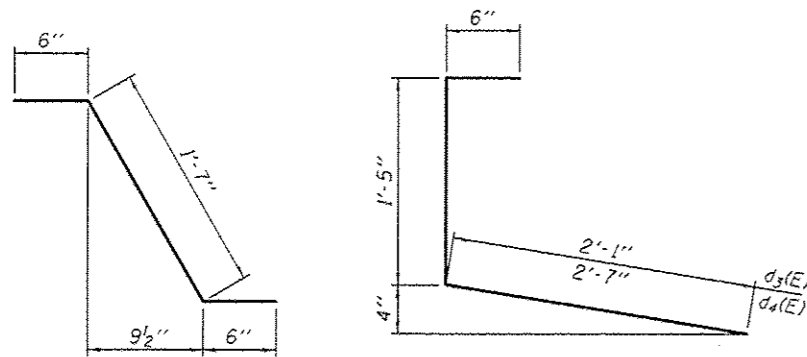
**SECTION C-C**  
Horiz. Dim. of Rt. L's



**SECTION D-D**  
Horiz. Dim. of Rt. L's

**DIMENSION "d"**

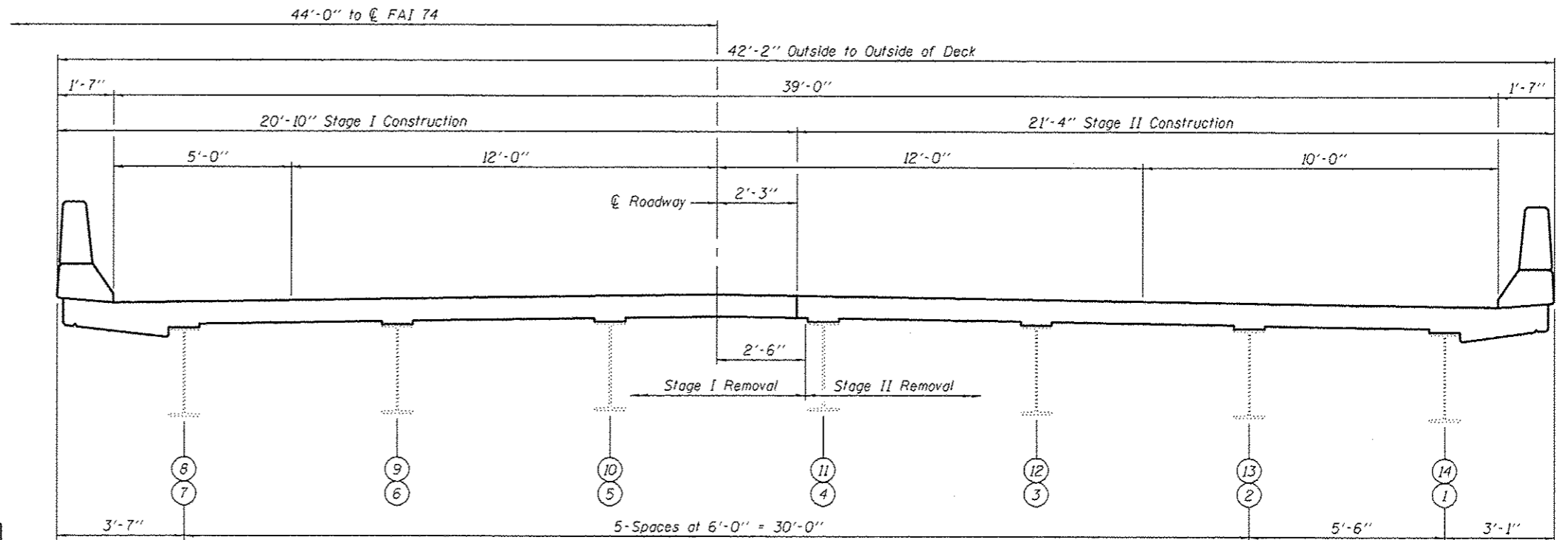
LOCATION	"d"
Pier 3	1'-11 <sup>13</sup> / <sub>16</sub> "
Pier 4	2'-0 <sup>3</sup> / <sub>16</sub> "
Pier 10	2'-0 <sup>5</sup> / <sub>16</sub> "
Pier 12	1'-11 <sup>5</sup> / <sub>16</sub> "



**BAR d<sub>1</sub>(E)**

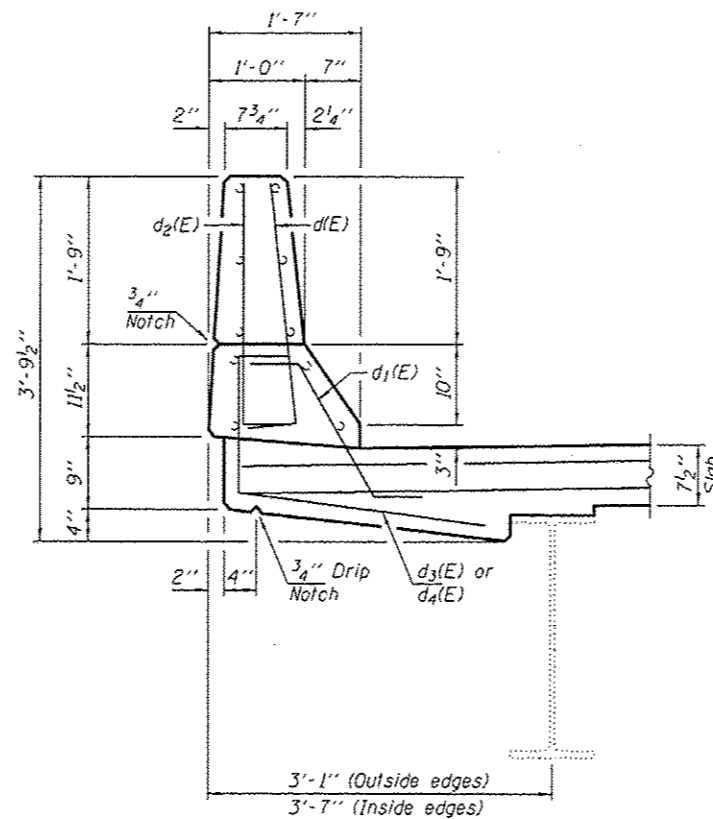
**BARS d<sub>3</sub>(E) & d<sub>4</sub>(E)**

**BARS d(E), d<sub>2</sub>(E), & x(E)**



**CROSS SECTION**

Looking East thru SN 037-0003 (E.B.)  
Looking West thru SN 037-0004 (W.B.)



**SECTION THRU PARAPET**

**BILL OF MATERIAL**

Bar	No.	Size	Length	Shape
d(E)	48	#5	24'-0"	—
a <sub>1</sub> (E)	48	#5	23'-6"	—
a <sub>2</sub> (E)	48	#5	21'-3"	—
a <sub>3</sub> (E)	48	#5	20'-9"	—
d(E)	86	#5	3'-0"	┘
d <sub>1</sub> (E)	86	#5	2'-7"	┘
d <sub>2</sub> (E)	86	#4	3'-0"	┘
d <sub>3</sub> (E)	42	#4	4'-0"	┘
d <sub>4</sub> (E)	44	#4	4'-6"	┘
h(E)	8	#6	24'-0"	—
h <sub>1</sub> (E)	8	#6	23'-6"	—
h <sub>2</sub> (E)	8	#6	21'-3"	—
h <sub>3</sub> (E)	8	#6	20'-9"	—
x(E)	480	#5	2'-4"	┘
Concrete Removal			Cu. Yd.	61.1
Concrete Superstructure			Cu. Yd.	61.6
Reinforcement Bars, Epoxy Coated			Pound	7640

Bars indicated thus 1 x 2-#5 etc. indicates 1 line of bars with 2 lengths per line.

DESIGNED GGE  
CHECKED VHV  
DRAWN Kyle M. Steffen  
CHECKED GGE VHV

EXAMINED  
PASSED  
ACTING ENGINEER OF STRUCTURAL SERVICES  
ACTING ENGINEER OF BRIDGES AND STRUCTURES

DATE MARCH 6, 2014  
REVISED  
REVISED

STATE OF ILLINOIS  
DEPARTMENT OF TRANSPORTATION

SUPERSTRUCTURE DETAILS  
SN 037-0003 & 0004

SHEET NO. 4 OF 8 SHEETS

F.A.I. RTE.	SECTION	COUNTY	TOTAL SHEETS	SHEET NO.
74	137-1HBRM	HENRY	27	23

CONTRACT NO. 64E94  
ILLINOIS FED. AID PROJECT