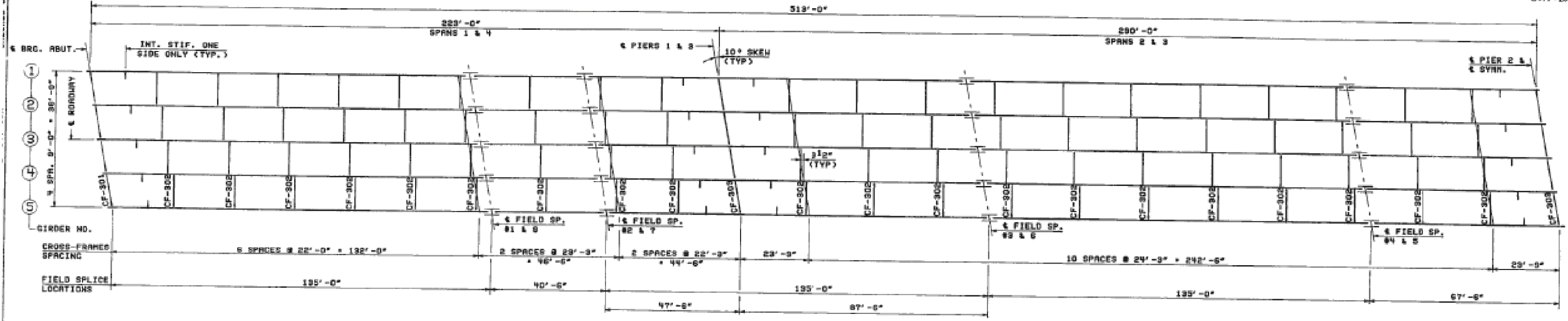


FOR INFORMATION ONLY

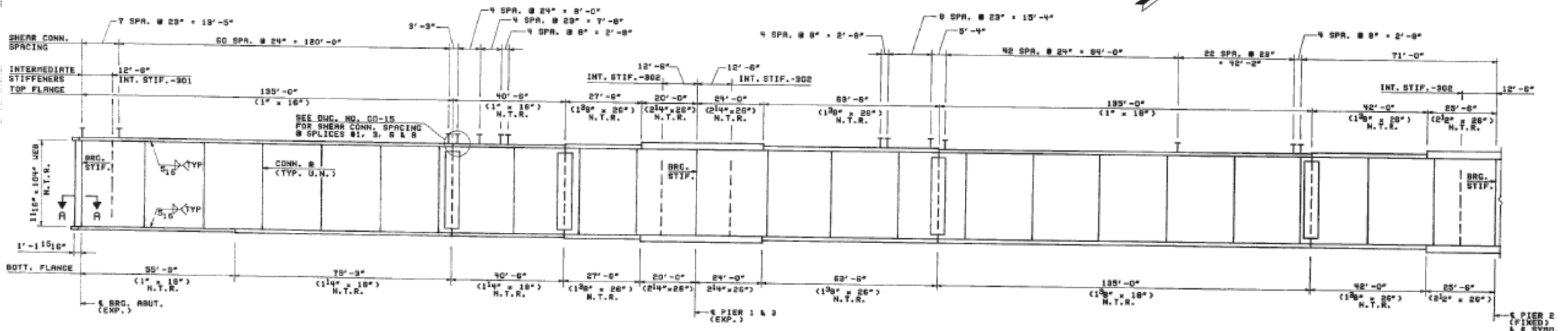
SHEET NO. 10 OF 50

ROUTE NO.	SECT.	COUNTY	SHEET NO.	TOTAL SHEETS
F.A. 742	398B-1	LEE & OGLE	86	34
FED. ROAD DIST. NO. 7		ILLINOIS FED. AID PROJECT		

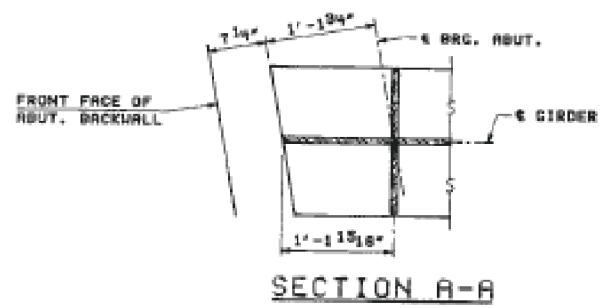
STP-BRF-742(15)



HALF FRAMING PLAN



HALF ELEVATION



NOTES:

1. FOR GENERAL NOTES SEE DNG. NO. GD-02.
2. ALL DIMENSIONS ARE GIVEN HORIZONTALLY & VERTICALLY AND SHALL BE ADJUSTED FOR VERTICAL PROFILE, CROSS SLOPES & CAMBERS.
3. ALL STRUCTURAL STEEL FOR FLANGES & WEBS OF MAIN GIRDERS, BEARING STIFFENERS & INTERMEDIATE STIFFENERS SHALL BE AASHTO A570 (GRADE 50).
4. N.T.R. DESIGNATES MEMBERS SUBJECT TO THE SUPPLEMENTAL REQUIREMENTS FOR NOTCH TOUGHNESS (ZONE 2).
5. FOR ADDITIONAL DETAILS SEE DNG. NOS. GD-13 THRU GD-17.

REVISION	DATE	DESCRIPTION

STATE OF ILLINOIS  
DEPARTMENT OF TRANSPORTATION  
**GIRDER FRAMING PLAN & ELEVATION**  
GRAND DETOUR BRIDGE  
OVER ROCK RIVER  
F.A. RTE. 742 SECTION 398B-1  
STA. 1228+96 LEE & OGLE COUNTIES  
STRUCTURE NUMBER 052-0063  
STEINMAN BOYNTON INC.  
CONSULTING ENGINEERS - CHICAGO, ILLINOIS

DRAWING NO.	SCALE	DATE	SHEET NO.
GD-12	N.T.S.	4-19-93	34

DESIGNED -	REVISED -	STATE OF ILLINOIS DEPARTMENT OF TRANSPORTATION	EXISTING BRIDGE PLANS SN: 052-0063	F.A.P. RTE.	SECTION	COUNTY	TOTAL SHEETS	SHEET NO.
DRAWN -	REVISED -			IL 2 D2 BRIDGE PAINTING 2014-1	LEE / OGLE	25	13	
CHECKED -	REVISED -			CONTRACT NO. 64J52				
DATE -	REVISED -			ILLINOIS				