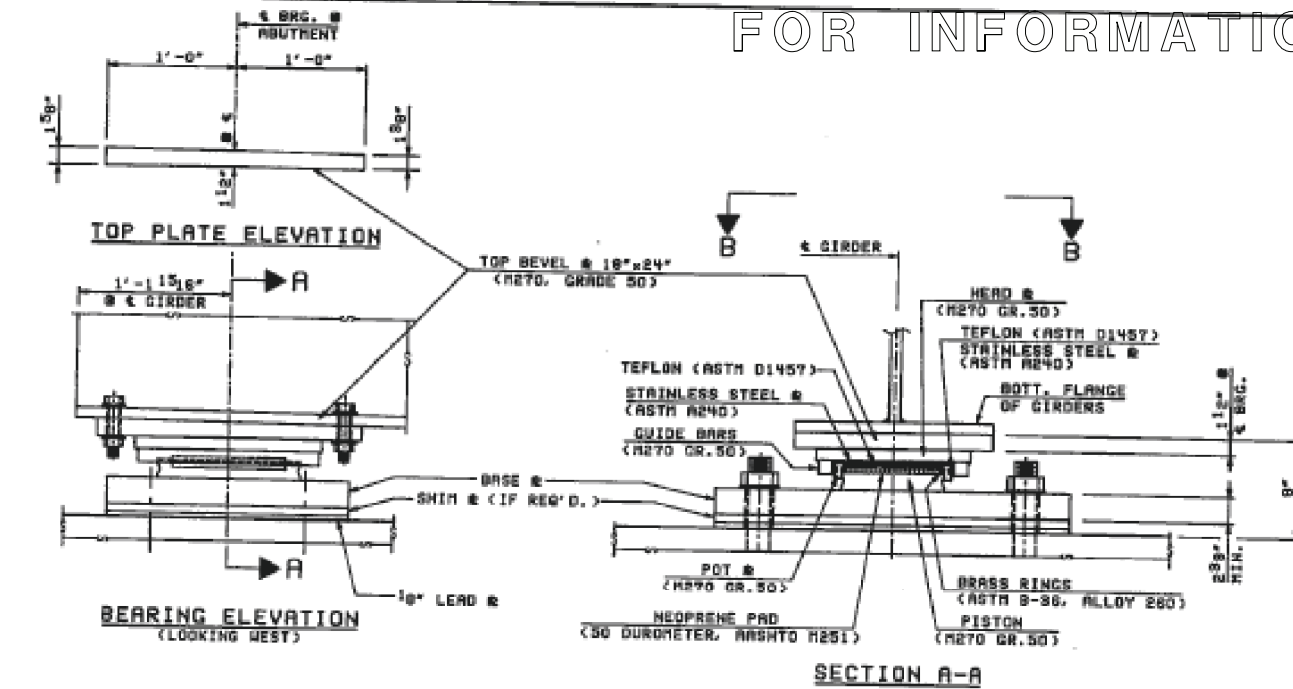
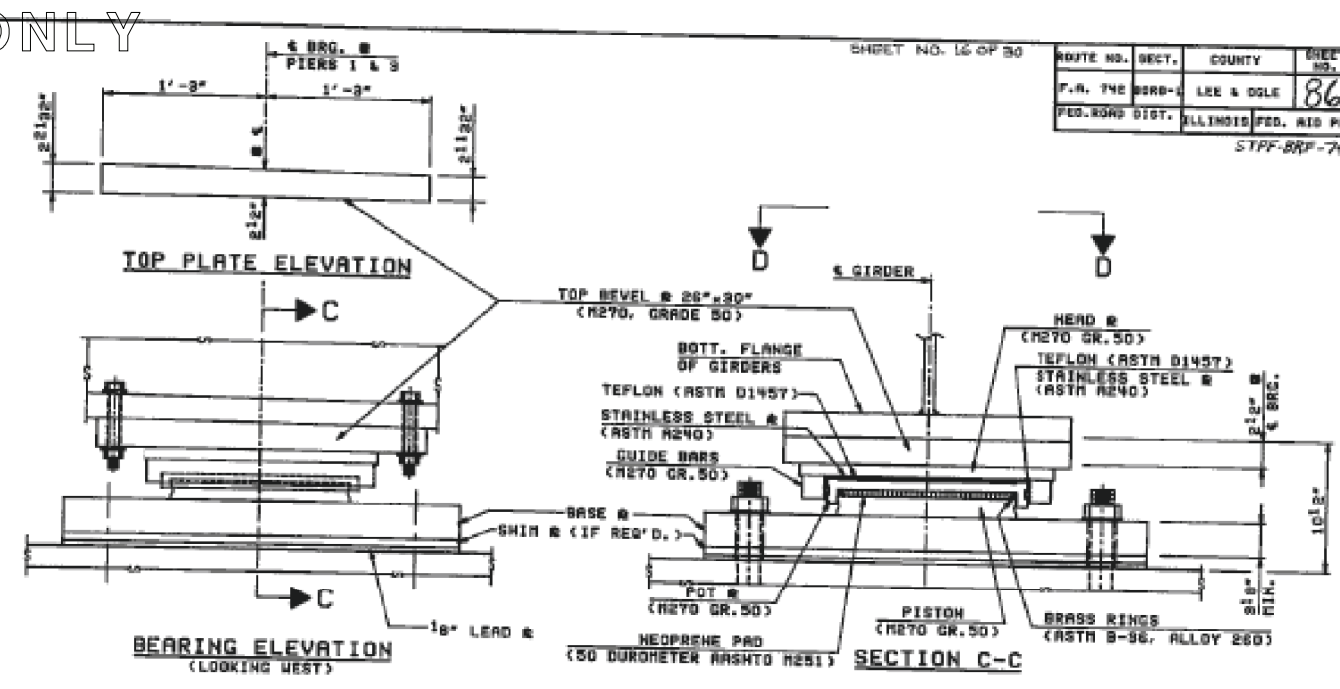


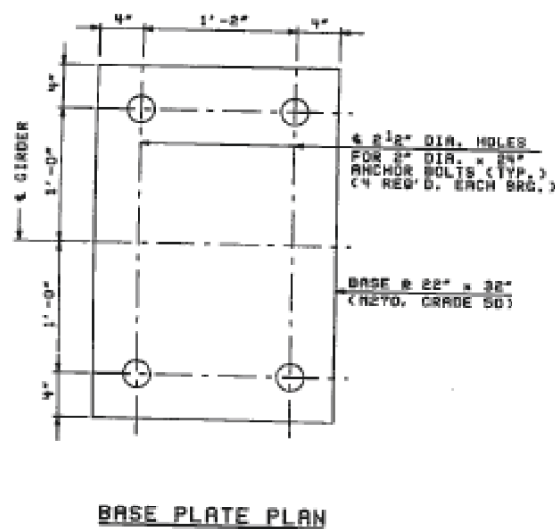
ROUTE NO. SECT.	COUNTY	SHEET NO.	TOTAL SHEETS
F.A. RTE. 398B-1	LEE & OGLE	86	40
FED. ROAD DIST.	ILLINOIS FED. AID PROJECT		
STPF-BRF-742(25)			



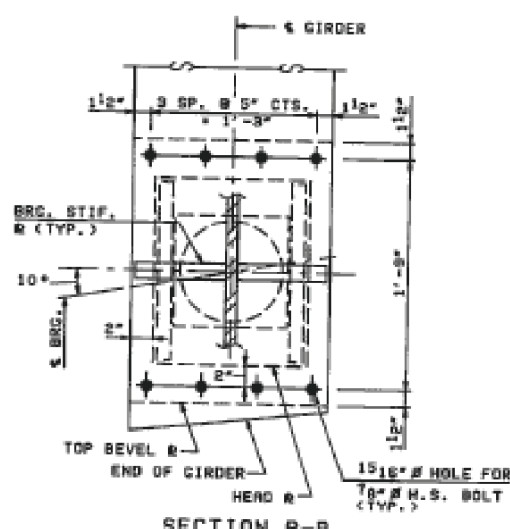
SECTION A-A



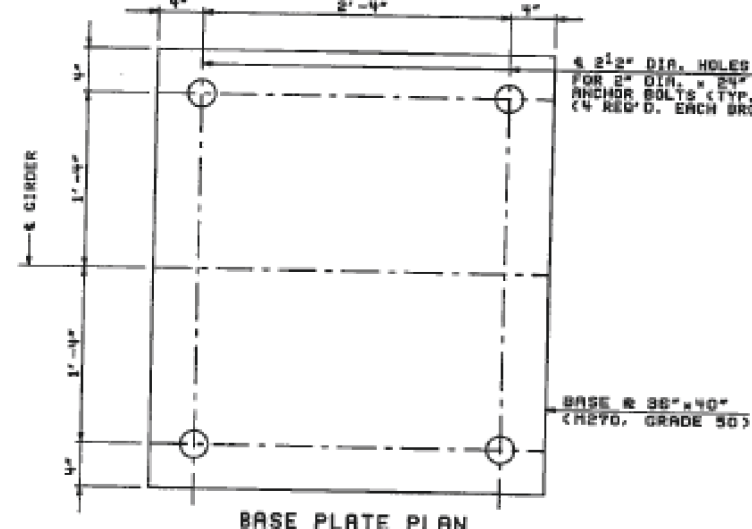
SECTION C-C



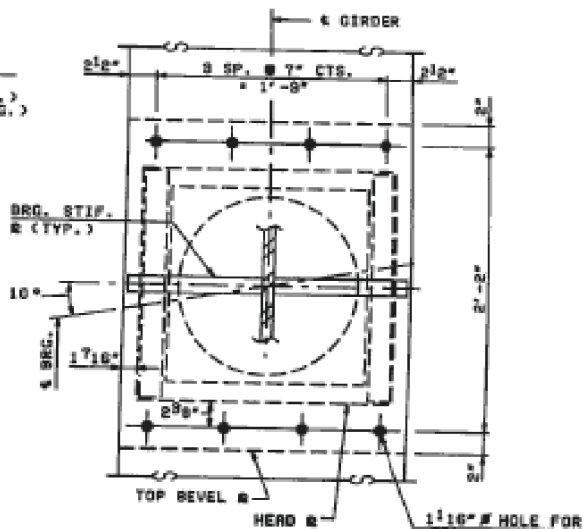
BASE PLATE PLAN



SECTION B-B



BASE PLATE PLAN



SECTION D-D

FLOATING BEARINGS - GUIDED EXPANSION @ ABUTMENTS

(FOR ALL GIRDERS - 2x5x10 REQUIRED)
(S. ABUTMENT SHOWN, SIMILAR AT N. ABUTMENT)

FLOATING BEARINGS - GUIDED EXPANSION @ PIERS 1 & 3

(FOR ALL GIRDERS - 2x5x10 REQUIRED)

BEARING DATA
N. ABUT. & S. ABUT.

MIN. DEAD LOADS	114 KIPS
MAX. DEAD LOADS	135 KIPS
LIVE LOAD + IMP	95 KIPS
TOTAL - MAXIMUM	230 KIPS

BEARING DATA
PIERS 1 & 3

MIN. DEAD LOADS	495 KIPS
MAX. DEAD LOADS	505 KIPS
LIVE LOAD + IMP	220 KIPS
TOTAL - MAXIMUM	725 KIPS

TRANSVERSE LOADS--(MAX.)

WIND	14 KIPS
OR EARTHQUAKE	27 KIPS

TRANSVERSE LOADS--(MAX.)

WIND	32 KIPS
OR EARTHQUAKE	101 KIPS

ROTATION

MOVEMENT--(LONGITUDINAL)	0.02 RADIAN
MOVEMENT--(TRANSVERSE)	0.25 INCHES

ROTATION

MOVEMENT--(LONGITUDINAL)	0.02 RADIAN
MOVEMENT--(TRANSVERSE)	0.25 INCHES



BELOW 50° F.
(MOVE BOTT. BRG. AWAY FROM FIXED BRG.)



ABOVE 50° F.
(MOVE BOTT. BRG. TOWARD FIXED BRG.)

SETTING ANCHOR BOLTS AT EXP. BRG.

D = 1/8" PER EACH 100' OF EXPANSION FOR EVERY 15° TEMP. CHANGE FROM THE NORMAL TEMP. OF 50° F.

NOTES:

- ALL DETAILED DESIGN COMPUTATIONS, DRAWINGS & INSTALLATION PROCEDURES SHALL BE SUBMITTED TO THE ENGINEER FOR APPROVAL PRIOR TO FABRICATION.
- SEE DWG. NO. CD-29 FOR ANCHOR BOLT DETAILS.
- CONTRACTOR IS RESPONSIBLE FOR ADJUSTING DIMENSIONS AS REQUIRED IN THE FIELD FOR THE ACTUAL BEARINGS USED (INCLUDING SEAT ELEVATIONS). DIMENSIONS TO BE ADJUSTED SHALL BE SUBMITTED TO THE ENGINEER FOR APPROVAL PRIOR TO FABRICATION OF BEARINGS.
- BEARING DIMENSIONS SUCH AS DIAMETER OF BRASS RINGS, PISTON, POT PLATE, HEAD PLATE, GUIDE BARS, NEOPRENE PAD, TEFLON, STAINLESS STEEL PLATE ETC. SHALL BE AS PER MANUFACTURER FOR GIVEN BEARING DESIGN DATA.

BILL OF MATERIAL

ITEM	UNIT	LEE COUNTY		OGLE COUNTY		TOTAL
		S. ABUT. & PIER 1	N. ABUT. & PIER 3	S. ABUT. & PIER 1	N. ABUT. & PIER 3	
FLOATING BEARINGS, GUIDED EXPANSION (750 KIPS)	EACH	5	5	5	5	10
FLOATING BEARINGS, GUIDED EXPANSION (230 KIPS)	EACH	5	5	5	5	10

REVISION	DATE	DESCRIPTION

STATE OF ILLINOIS
DEPARTMENT OF TRANSPORTATION

FLOATING BEARING DETAILS

GRAND DETOUR BRIDGE
OVER ROCK RIVER
F.A. RTE. 742 SECTION 398B-1
STRUCTURE NUMBER 052-0063

STEINMAN BOYNTON INC.
CONSULTING ENGINEERS - CHICAGO, ILLINOIS

DRAWING NO. CD-18	SCALE N.T.S.	DATE 4-19-92	SHEET NO. 18
-------------------	--------------	--------------	--------------

DESIGNED -	REVISED -
DRAWN -	REVISED -
CHECKED -	REVISED -
DATE -	REVISED -

STATE OF ILLINOIS
DEPARTMENT OF TRANSPORTATION

EXISTING BRIDGE PLANS
SN: 052-0063

F.A.P. RTE.	SECTION	COUNTY	TOTAL SHEETS	SHEET NO.
IL 2 D2 BRIDGE PAINTING 2014-1	LEE / OGLE	25	18	
				CONTRACT NO. 64J52
ILLINOIS				