

TEMPORARY TRAFFIC SIGNAL CONSTRUCTION NOTES

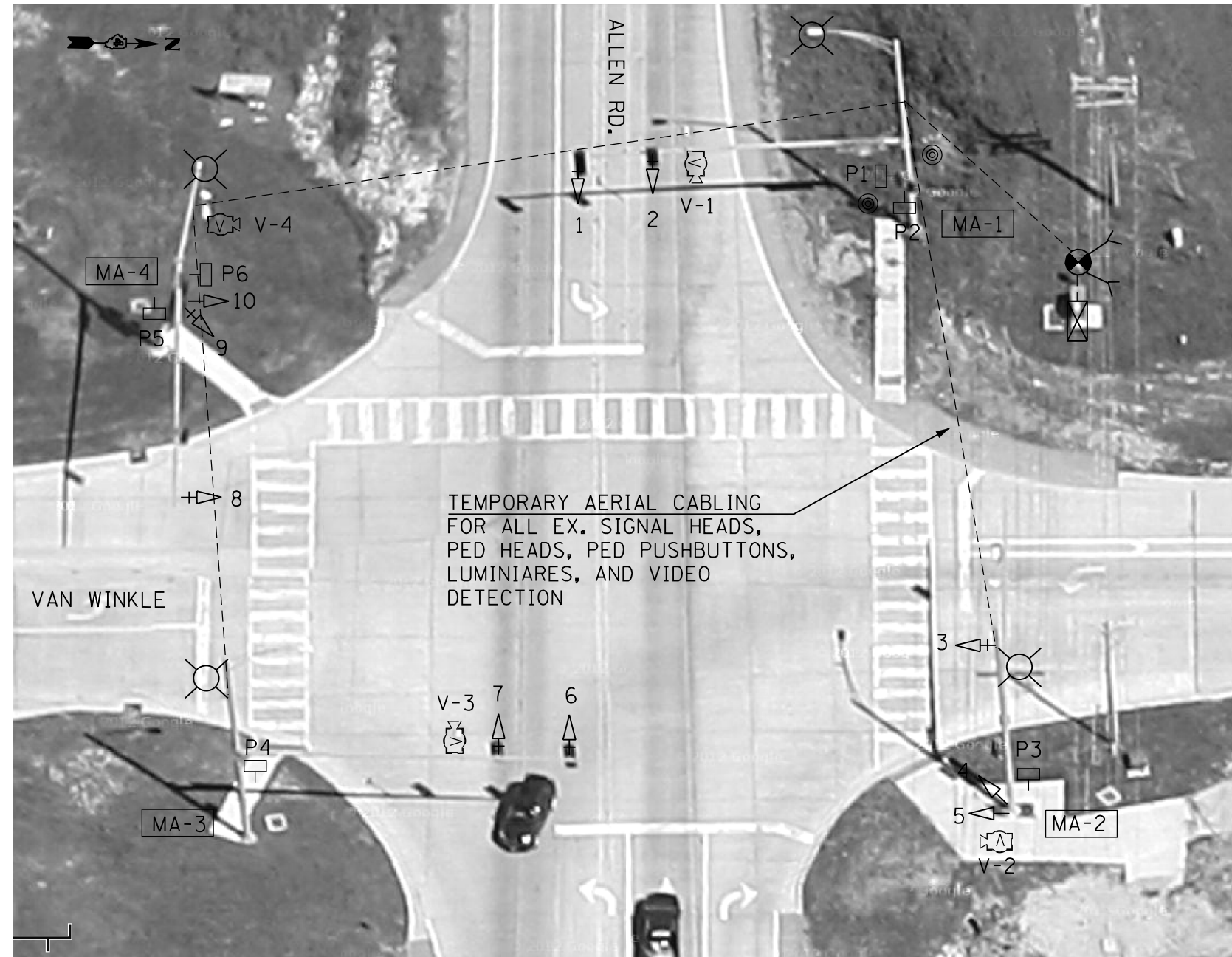
- T1. THE CONTRACTOR SHALL PROVIDE AND INSTALL EQUIPMENT WITH RESPECT TO THE TEMPORARY TRAFFIC SIGNAL INSTALLATION. THE CONTRACTOR SHALL FURNISH AND INSTALL TEMPORARY CABLING FOR ALL EXISTING SIGNAL HEADS, PEDESTRIAN SIGNAL HEADS, VIDEO DETECTION, LUMINAIRES, AND PEDESTRIAN PUSHBUTTONS, AND ELECTRIC SERVICE. THE CONTRACTOR SHALL PERFORM ALL WORK AND FURNISH AND INSTALL ALL OTHER ITEMS REQUIRED FOR THE CABLING AND OPERATION OF THE TEMPORARY TRAFFIC SIGNALS.
- T2. THE EXISTING FOUR CAMERA VEHICLE VIDEO DETECTION SYSTEM SHALL BE USED TO PROVIDE DETECTION FOR THE TEMPORARY TRAFFIC SIGNAL INSTALLATION. THE CONTRACTOR SHALL PROVIDE TEMPORARY VIDEO CABLING FOR THE TEMPORARY INSTALLATION.
- T3. THE EXISTING CONTROLLER CABINET SHALL BE USED IN THE TEMPORARY TRAFFIC SIGNAL INSTALLATION. THE CONTRACTOR SHALL FURNISH CABLING AND ALL ITEMS REQUIRED TO UTILIZE THE EXISTING CONTROLLER CABINET FOR THE TEMPORARY TRAFFIC SIGNALS.
- T4. ALL TRAFFIC SIGNAL EQUIPMENT SCHEDULED FOR REMOVAL MAY BE USED FOR TEMPORARY TRAFFIC SIGNALS. ANY MAINTENANCE OF THIS EQUIPMENT WHEN USED FOR TEMPORARY TRAFFIC SIGNALS SHALL BE THE RESPONSIBILITY OF THE CONTRACTOR. ALL EQUIPMENT (EXISTING AND PROVIDED BY THE DEPARTMENT) SHALL BE DELIVERED IN GOOD WORKING CONDITION UPON REMOVAL OF THE TEMPORARY TRAFFIC SIGNAL INSTALLATION.
- T5. AERIAL TRAFFIC SIGNAL CABLE SHALL BE FURNISHED AND INSTALLED AS SHOWN ON THE PLAN SHEETS. ALL EXISTING TRAFFIC SIGNAL CABLE WILL BE REMOVED. EXISTING TRAFFIC SIGNAL HEADS MAY BE USED IN THE TEMPORARY INSTALLATION.
- T6. TEMPORARY TRAFFIC SIGNAL SPAN WIRES AND CABLES SHALL BE ATTACHED TO THE WOOD POLES IN A MANNER APPROVED BY THE ENGINEER. ALL CABLES SHALL MAINTAIN A 18 FT. MINIMUM CLEARANCE ABOVE THE HIGHEST POINT OF THE ROADWAY.
- T7. ALL TRAFFIC SIGNAL SECTIONS SHALL HAVE 12" LENSES EQUIPPED WITH LED MODULES.
- T8. THE TEMPORARY TRAFFIC SIGNAL HEADS SHALL BE PLACED AS INDICATED ON THE PLANS OR DIRECTED BY THE ENGINEER.
- T9. THE CONTRACTOR SHALL FURNISH ENOUGH SLACK CABLE TO RELOCATE THE HEADS TO ANY POSITION REQUIRED FOR CONSTRUCTION STAGING. THE TEMPORARY TRAFFIC SIGNALS SHALL REMAIN IN OPERATION DURING ALL SIGNAL HEAD RELOCATIONS.
- T10. THE CONTRACTOR SHALL PROVIDE ALL LABOR, EQUIPMENT, AND MATERIALS REQUIRED TO RELOCATE THE TEMPORARY TRAFFIC SIGNAL HEADS IN ACCORDANCE WITH THE PROPOSED CONSTRUCTION STAGING.
- T11. THE TRAFFIC SIGNAL INSTALLATION SHALL CONFORM TO ALL APPLICABLE MUTCD STANDARDS.
- T12. THE CONTRACTOR SHALL BE RESPONSIBLE FOR MODIFYING THE VIDEO DETECTION SYSTEM TO ACCOMMODATE CONSTRUCTION STAGING (INCLUDING CAMERA AIMING AND PROGRAMMING).
- T13. ALL LABOR, MATERIALS, AND EQUIPMENT REQUIRED TO COMPLY WITH THESE REQUIREMENTS SHALL BE INCLUDED IN THE PRICE FOR TEMPORARY TRAFFIC SIGNAL INSTALLATION.

THE CONTRACTOR SHALL COORDINATE THE PLACEMENT OF WOOD POLES, GUY WIRES, AND OTHER TEMPORARY TRAFFIC SIGNAL EQUIPMENT WITH THE RESIDENT ENGINEER TO PREVENT CONFLICTS WITH CONSTRUCTION STAGING AND OVERHEAD UTILITIES.

| SCHEDULE OF QUANTITIES | | |
|---------------------------------------|------|----------|
| ITEM DESCRIPTION | UNIT | QUANTITY |
| TEMPORARY TRAFFIC SIGNAL INSTALLATION | EACH | 1.0 |

TEMPORARY TRAFFIC SIGNAL LEGEND

- TEMPORARY AERIAL TRAFFIC SIGNAL CABLE
- ⊗ TEMPORARY WOOD POLE WITH GUY WIRES
- > TEMPORARY TRAFFIC SIGNAL HEAD
- +> TEMPORARY TRAFFIC SIGNAL HEAD WITH BACKPLATE
- Ⓜ TEMPORARY VIDEO CAMERA (USE EX. VIDEO DETECTION)
- Ⓜ TEMPORARY CONTROLLER CABINET (USE EX. CABINET)
- ⊗ TEMPORARY LUMINAIRE, 250W HPS, MULTI-MOUNT (USE EX. LUMINAIRES)



TEMPORARY AERIAL CABLING FOR ALL EX. SIGNAL HEADS, PED HEADS, PED PUSHBUTTONS, LUMINAIRES, AND VIDEO DETECTION

PEDESTRIAN PHASES 2 AND 6 WILL NOT BE UTILIZED IN THE TEMPORARY TRAFFIC SIGNAL INSTALLATION. THE CONTRACTOR SHALL COVER PEDESTRIAN HEADS P2,P3,P4, AND P5 WITH A DURABLE BLACK COVER DURING CONSTRUCTION.