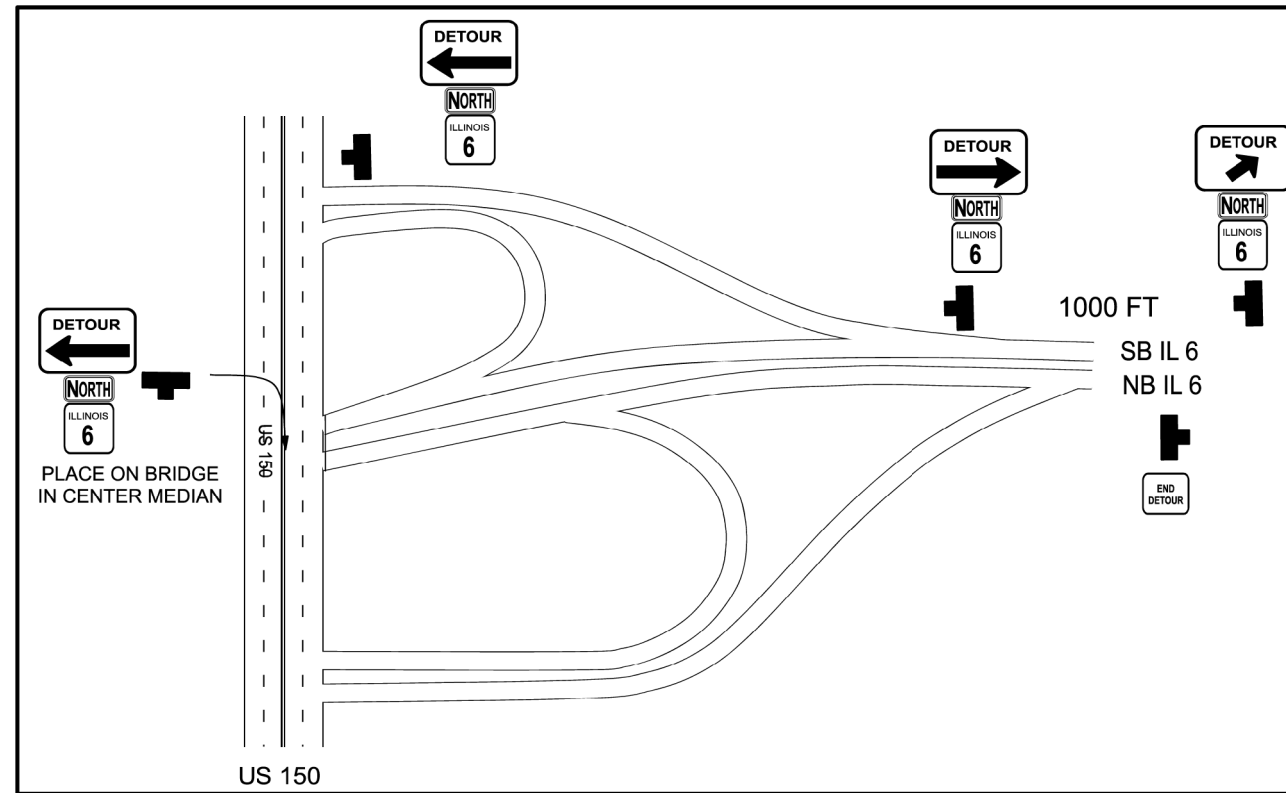
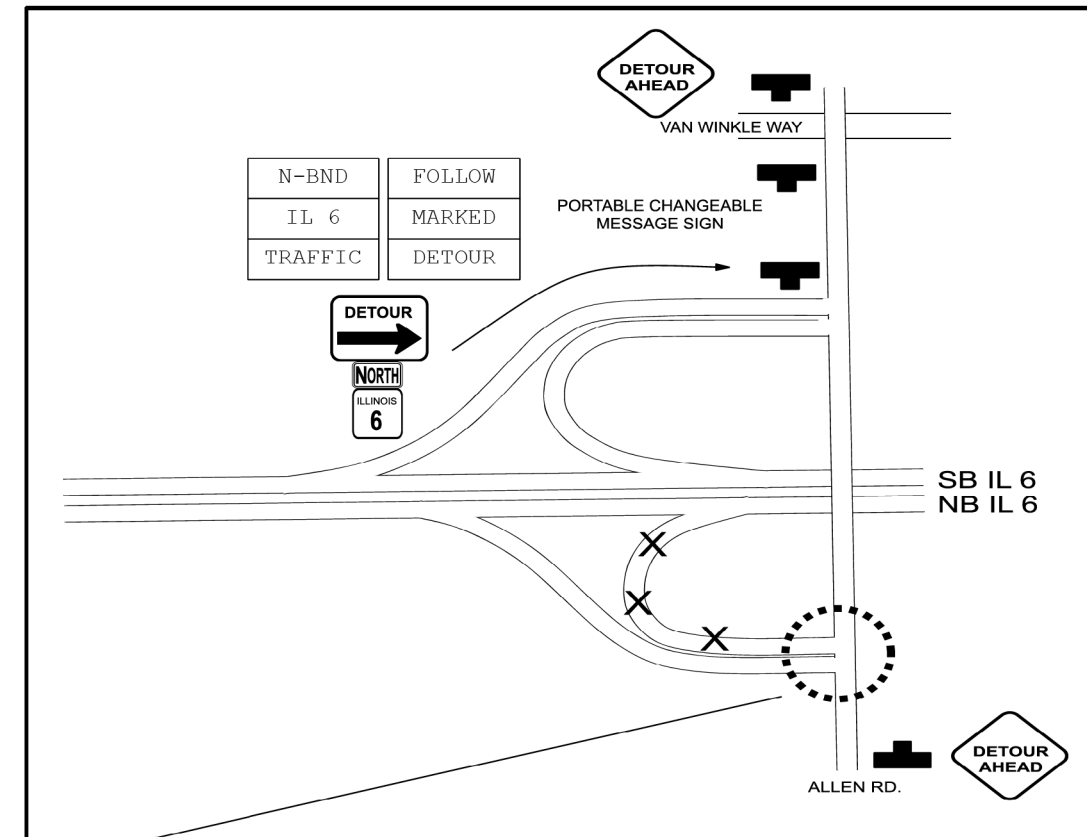


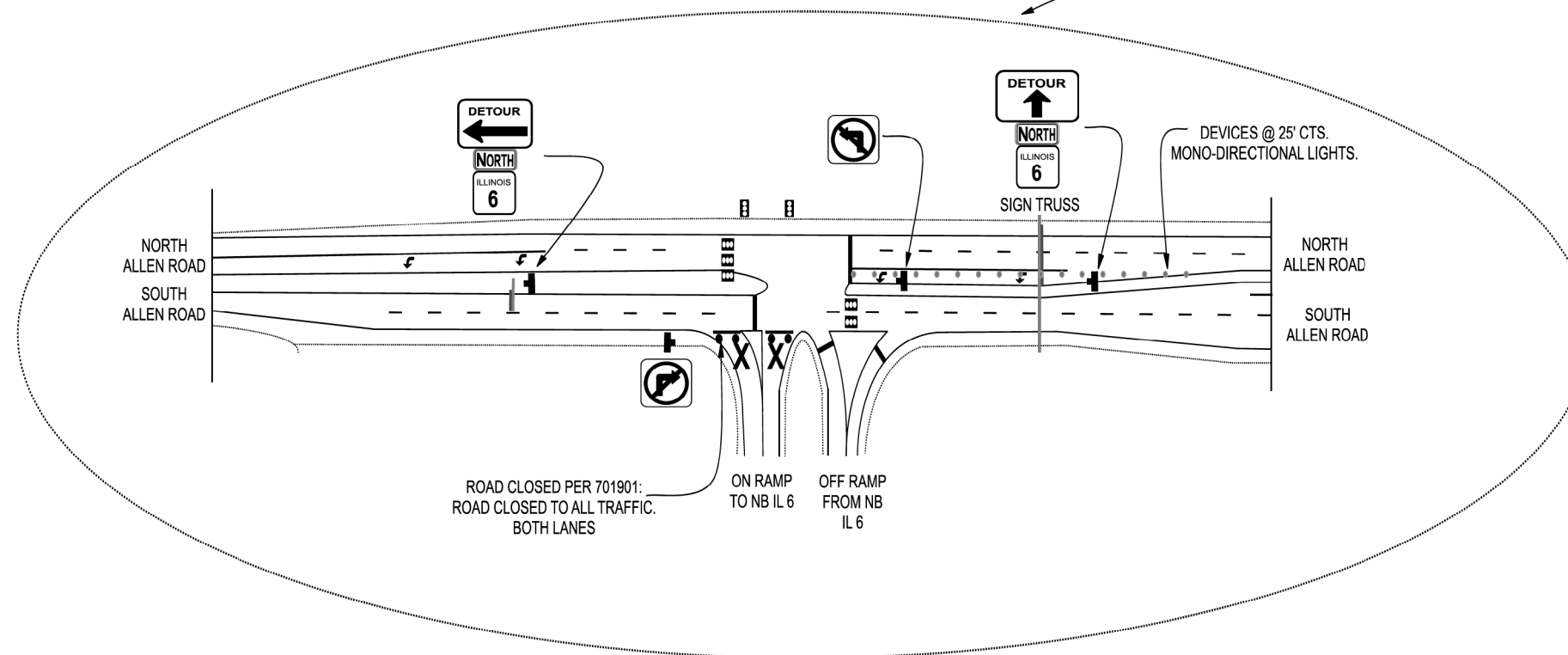
DETOUR ROUTE: ALLEN ROAD CLOSURE TO NB IL 6



US 150 & IL 6



ALLEN RD & IL 6



SIGN INVENTORY

SIGN	DESCRIPTION	TOTAL
	W20-2 48X48	2
	M4-9 (R) 48 X 36	2
	M4-9 (L) 48 X 36	3
	48 X 36	1
	M4-8a 24 X 18	1
	M3-1 24 X 12 BLACK ON WHITE	7
	24 X 18 BLACK ON WHITE	5
PCMS	PORTABLE CHANGEABLE MESSAGE SIGN	1
	M1-100 24 X 24 BLACK ON WHITE	5
	R3-1 24 X 24	1
	R3-2 24 X 24	1

FILE NAME =	USER NAME = aubreygs	DESIGNED -	REVISED -
et:\pw\work\p1dot\aubreygs\10346345\misc_sheets.dgn		DRAWN -	REVISED -
Default	PLOT SCALE = 40.0000' / in.	CHECKED -	REVISED -
	PLOT DATE = 1/29/2014	DATE -	REVISED -

STATE OF ILLINOIS
DEPARTMENT OF TRANSPORTATION

STAGE IB DETOUR DETAIL

SCALE: SHEET OF SHEETS STA. TO STA.

F.A.U. RTE.	SECTION	COUNTY	TOTAL SHEETS	SHEET NO.
6584	105: (72-7HBJBY)	PEORIA	487	151
6585			CONTRACT NO. 68683	

ILLINOIS FED. AID PROJECT