
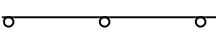


LEGEND

 PROPOSED CONSTRUCTION

 VERTICAL BARRICADES OR DRUMS

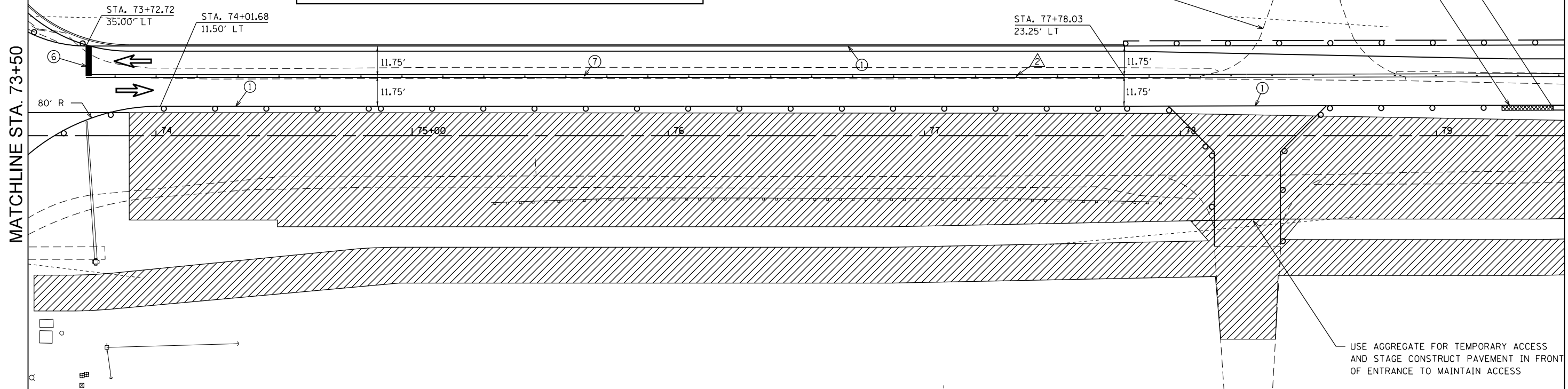
USE AGGREGATE FOR TEMPORARY ACCESS TO MAINTAIN ACCESS

STA. 79+45.46, 10.88' LT
BEGIN TEMPORARY CONCRETE BARRIER
(OFFSET TO CENTER OF BARRIER)

IMPACT ATTENUATOR, TEMPORARY
(NON-REDIRECTIVE), TEST LEVEL 3

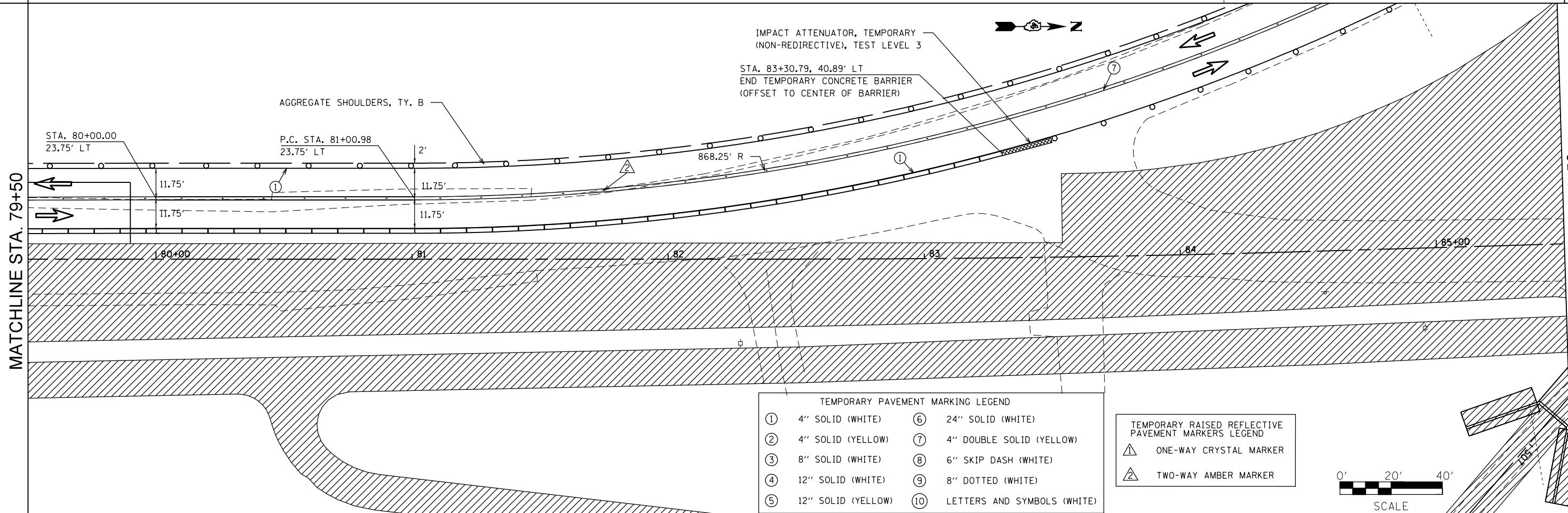
MATCHLINE STA. 73+50

MATCHLINE STA. 79+50



MATCHLINE STA. 79+50

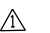

MATCHLINE STA. 85+50

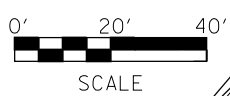


TEMPORARY PAVEMENT MARKING LEGEND

① 4" SOLID (WHITE)	⑥ 24" SOLID (WHITE)
② 4" SOLID (YELLOW)	⑦ 4" DOUBLE SOLID (YELLOW)
③ 8" SOLID (WHITE)	⑧ 6" SKIP DASH (WHITE)
④ 12" SOLID (WHITE)	⑨ 8" DOTTED (WHITE)
⑤ 12" SOLID (YELLOW)	⑩ LETTERS AND SYMBOLS (WHITE)

TEMPORARY RAISED REFLECTIVE PAVEMENT MARKERS LEGEND

	ONE-WAY CRYSTAL MARKER
	TWO-WAY AMBER MARKER



FILE NAME =	USER NAME = aubreys	DESIGNED -	REVISED -
et:\pw\work\p\dot\aubreys\d0346345\0468683-staging.dgn		DRAWN -	REVISED -
		CHECKED -	REVISED -
Stage II	PLOT DATE = 1/29/2014	DATE -	REVISED -

**STATE OF ILLINOIS
DEPARTMENT OF TRANSPORTATION**

STAGE II PLAN

SCALE:	SHEET	OF	SHEETS	STA.	TO	STA.
--------	-------	----	--------	------	----	------

F.A.U. RTÉ.	SECTION	COUNTY	TOTAL SHEETS	SHEET NO.
6584	105; (72-7H)BY	PEORIA	487	167
6585	CONTRACT NO. 68683			

ILLINOIS FED. AID PROJECT